

**Circuit Probate ❖ Overview**

The Circuit Probate division includes the following two categories of probate cases: probate & other probate and trust & guardianship. Within these categories are the following cases types:

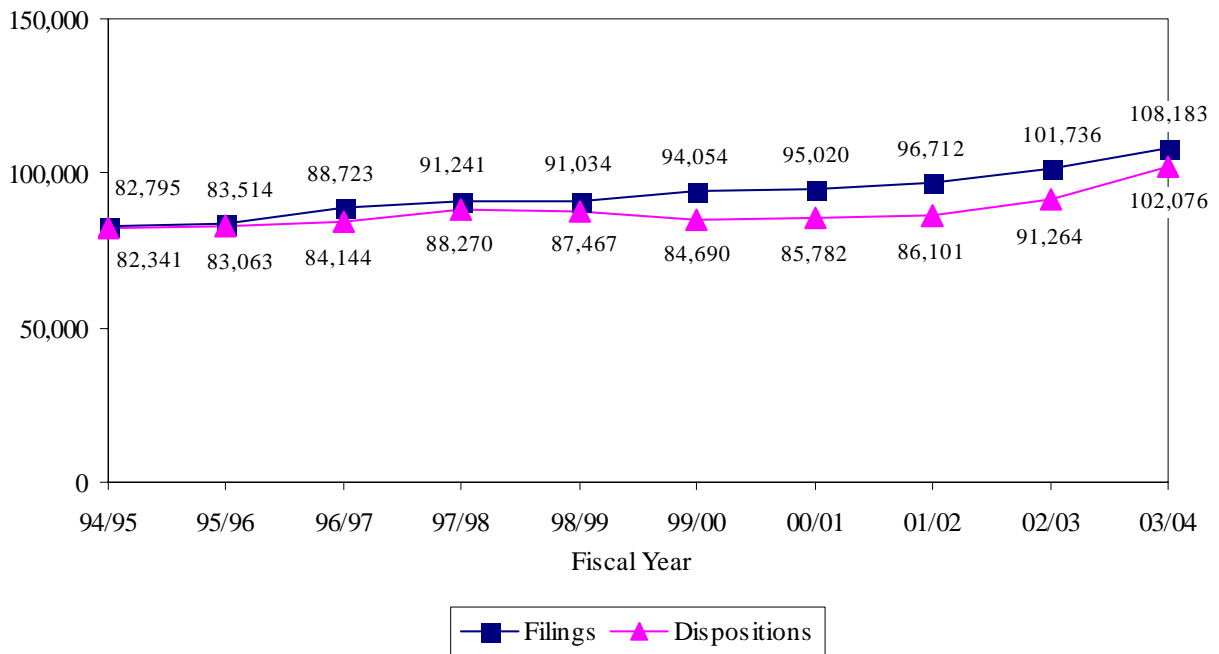
**Probate & Other Probate** - probate, Baker Act, substance abuse, and other social cases

**Trust & Guardianship** - guardianship and trust

In the Circuit Probate division, *Filings* correspond to each petition filed. *Dispositions* correspond to each petition disposed.

**CIRCUIT PROBATE FILINGS & DISPOSITIONS**

*FY 1994-95 to FY 2003-04*

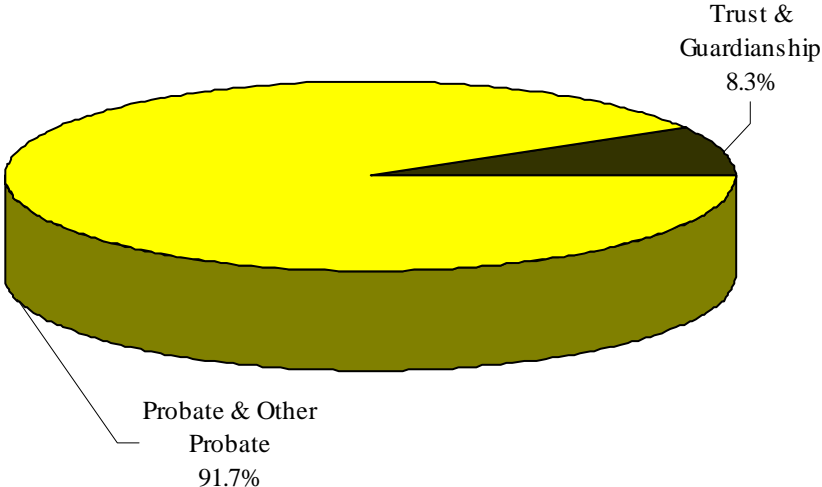


**CIRCUIT PROBATE FILINGS**  
*Statewide by Category, Case Type and Month*  
**FY 2003-04**

Category/ Case Type	Jul	Aug	Sep	Oct	Nov	Dec	Jan	Feb	Mar	Apr	May	Jun	Total
<b>Probate &amp; Other Probate</b>	<b>8,068</b>	<b>7,664</b>	<b>7,990</b>	<b>8,548</b>	<b>6,630</b>	<b>7,556</b>	<b>7,743</b>	<b>8,259</b>	<b>9,651</b>	<b>9,020</b>	<b>8,265</b>	<b>9,804</b>	<b>99,198</b>
Probate	4,945	4,555	4,699	5,219	4,008	4,586	4,705	5,179	6,020	5,450	5,008	6,227	60,601
Baker Act	2,093	2,014	2,227	2,152	1,713	1,957	1,996	1,948	2,327	2,323	2,080	2,326	25,156
Substance Abuse	588	587	594	662	527	594	618	647	773	747	732	705	7,774
Other Social Cases	442	508	470	515	382	419	424	485	531	500	445	546	5,667
<b>Trust &amp; Guardianship</b>	<b>748</b>	<b>747</b>	<b>737</b>	<b>788</b>	<b>659</b>	<b>755</b>	<b>665</b>	<b>729</b>	<b>844</b>	<b>827</b>	<b>652</b>	<b>834</b>	<b>8,985</b>
Guardianship	682	668	680	735	592	680	602	666	761	739	583	757	8,145
Trust	66	79	57	53	67	75	63	63	83	88	69	77	840
<b>Total</b>	<b>8,816</b>	<b>8,411</b>	<b>8,727</b>	<b>9,336</b>	<b>7,289</b>	<b>8,311</b>	<b>8,408</b>	<b>8,988</b>	<b>10,495</b>	<b>9,847</b>	<b>8,917</b>	<b>10,638</b>	<b>108,183</b>

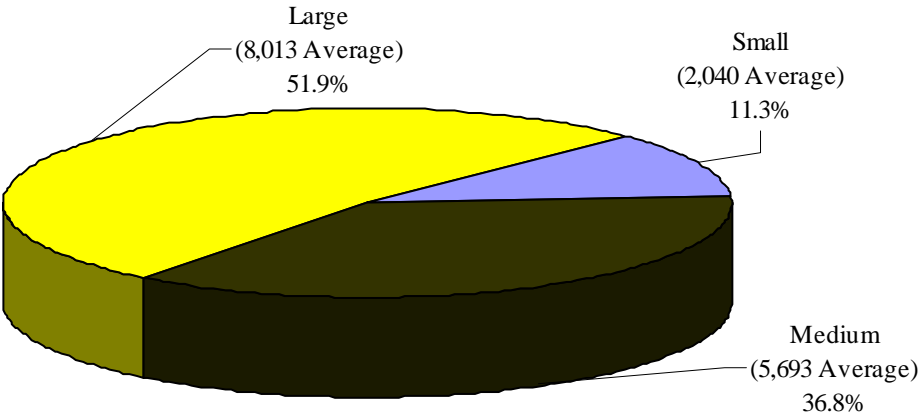
5

**CIRCUIT PROBATE FILINGS**  
*by Category*  
**FY 2003-04**



5

**CIRCUIT PROBATE FILINGS**  
*by Circuit Size\**  
**FY 2003-04**



\*Small Circuits- 2nd, 3rd, 8th, 14th, 16th, 19th;  
Medium Circuits- 1st, 5th, 7th, 10th, 12th, 18th, 20th;  
Large Circuits- 4th, 6th, 9th, 11th, 13th, 15th, 17th (as defined in the Glossary).

**CIRCUIT PROBATE FILINGS**  
*by Case Type and Circuit*  
**FY 2003-04**

Circuit	Probate	Baker Act	Substance Abuse	Other Social Cases	Guardianship	Trust	Total
1	2,071	1,376	213	157	242	11	4,070
2	1,049	919	84	270	209	0	2,531
3	689	143	169	15	83	0	1,099
4	2,812	1,068	1,241	218	443	0	5,782
5	4,361	1,018	53	338	501	29	6,300
6	6,028	2,985	122	457	559	94	10,245
7	3,364	1,203	644	154	319	79	5,763
8	836	876	140	84	121	10	2,067
9	2,512	1,726	489	273	406	6	5,412
10	2,342	1,217	249	205	321	12	4,346
11	4,707	3,300	640	976	986	54	10,663
12	3,326	1,119	48	362	693	63	5,611
13	2,639	1,854	450	466	515	67	5,991
14	1,045	457	154	33	113	0	1,802
15	5,163	904	1,261	374	636	203	8,541
16	380	53	41	9	26	0	509
17	5,317	2,205	557	590	678	112	9,459
18	2,788	858	670	232	434	22	5,004
19	2,524	1,006	291	109	258	43	4,231
20	6,648	869	258	345	602	35	8,757
<b>Total</b>	<b>60,601</b>	<b>25,156</b>	<b>7,774</b>	<b>5,667</b>	<b>8,145</b>	<b>840</b>	<b>108,183</b>

5

**CIRCUIT PROBATE FILINGS**  
*by Category and Circuit/County*  
**FY 2003-04**

Circuit/County	Probate & Other Probate	Trust & Guardianship	Total
<b>Circuit 1</b>	<b>3,817</b>	<b>253</b>	<b>4,070</b>
Escambia	1,862	122	1,984
Okaloosa	1,145	67	1,212
Santa Rosa	541	48	589
Walton	269	16	285
<b>Circuit 2</b>	<b>2,322</b>	<b>209</b>	<b>2,531</b>
Franklin	92	3	95
Gadsden	417	53	470
Jefferson	62	6	68
Leon	1,549	118	1,667
Liberty	26	4	30
Wakulla	176	25	201
<b>Circuit 3</b>	<b>1,016</b>	<b>83</b>	<b>1,099</b>
Columbia	349	40	389
Dixie	67	1	68
Hamilton	48	6	54
Lafayette	36	3	39
Madison	121	6	127
Suwannee	225	20	245
Taylor	170	7	177
<b>Circuit 4</b>	<b>5,339</b>	<b>443</b>	<b>5,782</b>
Clay	426	65	491
Duval	4,703	362	5,065
Nassau	210	16	226

**CIRCUIT PROBATE FILINGS, Continued**  
**by Category and Circuit/County**  
**FY 2003-04**

Circuit/County	Probate & Other Probate	Trust & Guardianship	Total
<b>Circuit 5</b>	<b>5,770</b>	<b>530</b>	<b>6,300</b>
Citrus	931	80	1,011
Hernando	1,500	194	1,694
Lake	1,262	83	1,345
Marion	1,835	161	1,996
Sumter	242	12	254
<b>Circuit 6</b>	<b>9,592</b>	<b>653</b>	<b>10,245</b>
Pasco	2,989	151	3,140
Pinellas	6,603	502	7,105
<b>Circuit 7</b>	<b>5,365</b>	<b>398</b>	<b>5,763</b>
Flagler	481	29	510
Putnam	368	31	399
St. Johns	690	124	814
Volusia	3,826	214	4,040
<b>Circuit 8</b>	<b>1,936</b>	<b>131</b>	<b>2,067</b>
Alachua	1,394	98	1,492
Baker	150	7	157
Bradford	82	6	88
Gilchrist	76	7	83
Levy	179	11	190
Union	55	2	57
<b>Circuit 9</b>	<b>5,000</b>	<b>412</b>	<b>5,412</b>
Orange	4,134	314	4,448
Osceola	866	98	964

5

**CIRCUIT PROBATE FILINGS, Continued**  
**by Category and Circuit/County**  
**FY 2003-04**

Circuit/County	Probate & Other Probate	Trust & Guardianship	Total
<b>Circuit 10</b>	<b>4,013</b>	<b>333</b>	<b>4,346</b>
Hardee	104	23	127
Highlands	930	82	1,012
Polk	2,979	228	3,207
<b>Circuit 11</b>	<b>9,623</b>	<b>1,040</b>	<b>10,663</b>
Dade	9,623	1,040	10,663
<b>Circuit 12</b>	<b>4,855</b>	<b>756</b>	<b>5,611</b>
Desoto	131	24	155
Manatee	1,912	156	2,068
Sarasota	2,812	576	3,388
<b>Circuit 13</b>	<b>5,409</b>	<b>582</b>	<b>5,991</b>
Hillsborough	5,409	582	5,991
<b>Circuit 14</b>	<b>1,689</b>	<b>113</b>	<b>1,802</b>
Bay	1,058	57	1,115
Calhoun	70	5	75
Gulf	80	7	87
Holmes	97	0	97
Jackson	275	32	307
Washington	109	12	121
<b>Circuit 15</b>	<b>7,702</b>	<b>839</b>	<b>8,541</b>
Palm Beach	7,702	839	8,541
<b>Circuit 16</b>	<b>483</b>	<b>26</b>	<b>509</b>
Monroe	483	26	509

**CIRCUIT PROBATE FILINGS, Continued**  
**by Category and Circuit/County**  
**FY 2003-04**

Circuit/County	Probate & Other Probate	Trust & Guardianship	Total
<b>Circuit 17</b>	<b>8,669</b>	<b>790</b>	<b>9,459</b>
Broward	8,669	790	9,459
<b>Circuit 18</b>	<b>4,548</b>	<b>456</b>	<b>5,004</b>
Brevard	2,949	311	3,260
Seminole	1,599	145	1,744
<b>Circuit 19</b>	<b>3,930</b>	<b>301</b>	<b>4,231</b>
Indian River	1,052	79	1,131
Martin	810	64	874
Okeechobee	256	16	272
St. Lucie	1,812	142	1,954
<b>Circuit 20</b>	<b>8,120</b>	<b>637</b>	<b>8,757</b>
Charlotte	2,131	119	2,250
Collier	1,652	186	1,838
Glades	37	2	39
Hendry	119	15	134
Lee	4,181	315	4,496
<b>State Total</b>	<b>99,198</b>	<b>8,985</b>	<b>108,183</b>

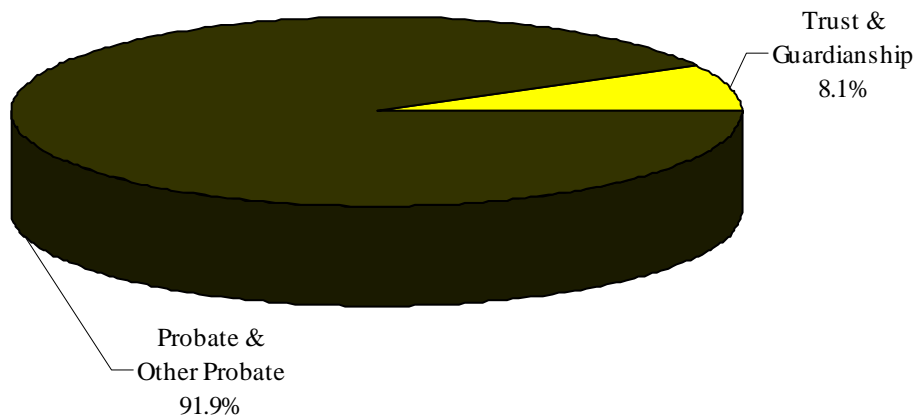


**Circuit Probate** ❖ **Dispositions**

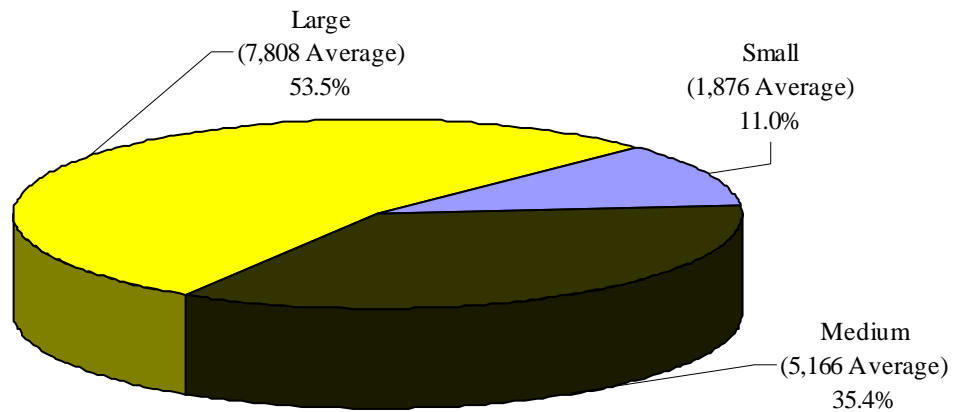
**CIRCUIT PROBATE DISPOSITIONS**  
**Statewide by Category, Case Type and Month**  
**FY 2003-04**

Category/ Case Type	Jul	Aug	Sep	Oct	Nov	Dec	Jan	Feb	Mar	Apr	May	Jun	Total
<b>Probate &amp; Other Probate</b>	<b>7,948</b>	<b>7,297</b>	<b>7,718</b>	<b>8,437</b>	<b>6,307</b>	<b>7,300</b>	<b>7,610</b>	<b>7,266</b>	<b>8,383</b>	<b>8,764</b>	<b>8,090</b>	<b>8,641</b>	<b>93,761</b>
Probate	5,102	4,588	4,739	5,301	3,860	4,560	4,695	4,593	5,113	5,316	5,064	5,297	58,228
Baker Act	1,848	1,740	1,993	1,988	1,562	1,791	1,900	1,748	2,046	2,260	1,937	2,241	23,054
Substance Abuse	567	530	550	689	476	565	558	533	696	724	649	642	7,179
Other Social Cases	431	439	436	459	409	384	457	392	528	464	440	461	5,300
<b>Trust &amp; Guardianship</b>	<b>631</b>	<b>686</b>	<b>719</b>	<b>870</b>	<b>634</b>	<b>697</b>	<b>669</b>	<b>610</b>	<b>785</b>	<b>679</b>	<b>660</b>	<b>675</b>	<b>8,315</b>
Guardianship	598	649	665	829	590	644	627	576	742	635	614	634	7,803
Trust	33	37	54	41	44	53	42	34	43	44	46	41	512
<b>Total</b>	<b>8,579</b>	<b>7,983</b>	<b>8,437</b>	<b>9,307</b>	<b>6,941</b>	<b>7,997</b>	<b>8,279</b>	<b>7,876</b>	<b>9,168</b>	<b>9,443</b>	<b>8,750</b>	<b>9,316</b>	<b>102,076</b>

**CIRCUIT PROBATE DISPOSITIONS**  
*by Category*  
**FY 2003-04**



**CIRCUIT PROBATE DISPOSITIONS**  
*by Circuit Size\**  
**FY 2003-04**



\*Small Circuits- 2nd, 3rd, 8th, 14th, 16th, 19th;  
Medium Circuits- 1st, 5th, 7th, 10th, 12th, 18th, 20th;  
Large Circuits- 4th, 6th, 9th, 11th, 13th, 15th, 17th (as defined in the Glossary).

5

**CIRCUIT PROBATE DISPOSITIONS**  
**by Case Type and Circuit**  
**FY 2003-04**

Circuit	Probate	Baker Act	Substance Abuse	Other Social Cases	Guardianship	Trust	Total
1	1,867	1,326	198	156	245	12	3,804
2	894	889	65	253	130	0	2,231
3	532	117	127	7	29	0	812
4	2,492	1,018	1,009	192	318	0	5,029
5	4,232	841	53	293	422	23	5,864
6	6,298	2,888	123	430	509	54	10,302
7	3,369	1,162	615	134	260	15	5,555
8	796	798	115	69	154	5	1,937
9	2,490	1,632	476	265	372	1	5,236
10	2,259	496	273	158	271	14	3,471
11	4,724	3,203	624	905	1,259	32	10,747
12	3,346	517	31	275	502	32	4,703
13	2,661	1,852	445	456	584	57	6,055
14	943	446	151	32	45	0	1,617
15	5,395	1,071	1,220	303	538	163	8,690
16	354	54	35	10	50	0	503
17	4,292	2,185	499	710	889	24	8,599
18	2,772	796	644	223	497	17	4,949
19	2,552	927	272	116	255	32	4,154
20	5,960	836	204	313	474	31	7,818
<b>Total</b>	<b>58,228</b>	<b>23,054</b>	<b>7,179</b>	<b>5,300</b>	<b>7,803</b>	<b>512</b>	<b>102,076</b>

**CIRCUIT PROBATE DISPOSITIONS**  
*by Category and Circuit/County*  
**FY 2003-04**

Circuit/County	Probate & Other Probate	Trust & Guardianship	Total
<b>Circuit 1</b>	<b>3,547</b>	<b>257</b>	<b>3,804</b>
Escambia	1,812	112	1,924
Okaloosa	986	75	1,061
Santa Rosa	505	61	566
Walton	244	9	253
<b>Circuit 2</b>	<b>2,101</b>	<b>130</b>	<b>2,231</b>
Franklin	49	3	52
Gadsden	485	18	503
Jefferson	19	3	22
Leon	1,488	101	1,589
Liberty	14	0	14
Wakulla	46	5	51
<b>Circuit 3</b>	<b>783</b>	<b>29</b>	<b>812</b>
Columbia	325	12	337
Dixie	42	0	42
Hamilton	33	3	36
Lafayette	4	1	5
Madison	94	4	98
Suwannee	178	5	183
Taylor	107	4	111
<b>Circuit 4</b>	<b>4,711</b>	<b>318</b>	<b>5,029</b>
Clay	261	32	293
Duval	4,267	270	4,537
Nassau	183	16	199

5

**CIRCUIT PROBATE DISPOSITIONS, Continued**  
**by Category and Circuit/County**  
**FY 2003-04**

Circuit/County	Probate & Other Probate	Trust & Guardianship	Total
<b>Circuit 5</b>	<b>5,419</b>	<b>445</b>	<b>5,864</b>
Citrus	953	63	1,016
Hernando	1,239	151	1,390
Lake	1,386	84	1,470
Marion	1,626	136	1,762
Sumter	215	11	226
<b>Circuit 6</b>	<b>9,739</b>	<b>563</b>	<b>10,302</b>
Pasco	3,080	155	3,235
Pinellas	6,659	408	7,067
<b>Circuit 7</b>	<b>5,280</b>	<b>275</b>	<b>5,555</b>
Flagler	468	16	484
Putnam	351	30	381
St. Johns	519	22	541
Volusia	3,942	207	4,149
<b>Circuit 8</b>	<b>1,778</b>	<b>159</b>	<b>1,937</b>
Alachua	1,297	124	1,421
Baker	137	5	142
Bradford	76	14	90
Gilchrist	46	1	47
Levy	173	12	185
Union	49	3	52
<b>Circuit 9</b>	<b>4,863</b>	<b>373</b>	<b>5,236</b>
Orange	4,016	289	4,305
Osceola	847	84	931

**CIRCUIT PROBATE DISPOSITIONS, Continued**  
**by Category and Circuit/County**  
**FY 2003-04**

Circuit/County	Probate & Other Probate	Trust & Guardianship	Total
<b>Circuit 10</b>	<b>3,186</b>	<b>285</b>	<b>3,471</b>
Hardee	73	17	90
Highlands	870	64	934
Polk	2,243	204	2,447
<b>Circuit 11</b>	<b>9,456</b>	<b>1,291</b>	<b>10,747</b>
Dade	9,456	1,291	10,747
<b>Circuit 12</b>	<b>4,169</b>	<b>534</b>	<b>4,703</b>
Desoto	211	2	213
Manatee	1,659	170	1,829
Sarasota	2,299	362	2,661
<b>Circuit 13</b>	<b>5,414</b>	<b>641</b>	<b>6,055</b>
Hillsborough	5,414	641	6,055
<b>Circuit 14</b>	<b>1,572</b>	<b>45</b>	<b>1,617</b>
Bay	981	29	1,010
Calhoun	61	0	61
Gulf	137	1	138
Holmes	83	2	85
Jackson	227	9	236
Washington	83	4	87
<b>Circuit 15</b>	<b>7,989</b>	<b>701</b>	<b>8,690</b>
Palm Beach	7,989	701	8,690
<b>Circuit 16</b>	<b>453</b>	<b>50</b>	<b>503</b>
Monroe	453	50	503

5

**CIRCUIT PROBATE DISPOSITIONS, Continued**  
**by Category and Circuit/County**  
**FY 2003-04**

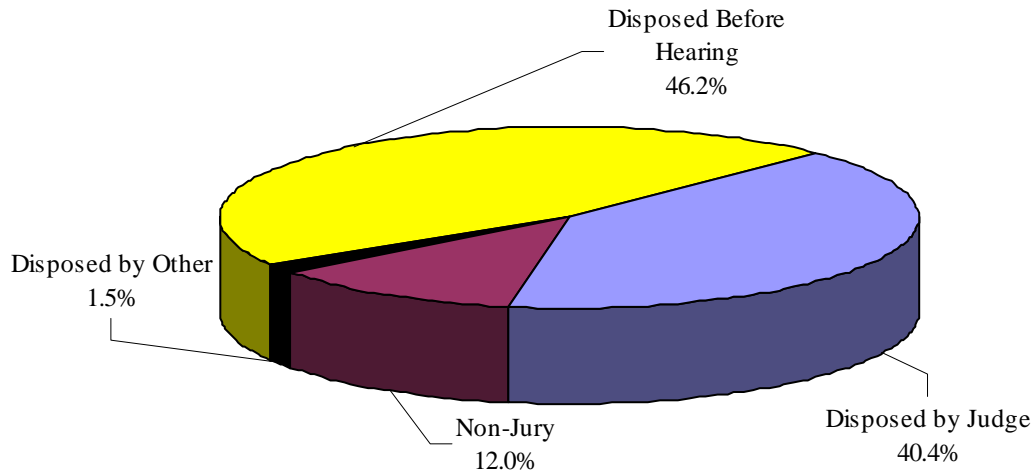
Circuit/County	Probate & Other Probate	Trust & Guardianship	Total
<b>Circuit 17</b>	<b>7,686</b>	<b>913</b>	<b>8,599</b>
Broward	7,686	913	8,599
<b>Circuit 18</b>	<b>4,435</b>	<b>514</b>	<b>4,949</b>
Brevard	2,806	392	3,198
Seminole	1,629	122	1,751
<b>Circuit 19</b>	<b>3,867</b>	<b>287</b>	<b>4,154</b>
Indian River	1,045	81	1,126
Martin	686	53	739
Okeechobee	228	13	241
St. Lucie	1,908	140	2,048
<b>Circuit 20</b>	<b>7,313</b>	<b>505</b>	<b>7,818</b>
Charlotte	1,921	99	2,020
Collier	1,689	170	1,859
Glades	32	0	32
Hendry	117	9	126
Lee	3,554	227	3,781
<b>State Total</b>	<b>93,761</b>	<b>8,315</b>	<b>102,076</b>

**CIRCUIT PROBATE DISPOSITIONS**  
*Statewide by Case Type and Disposition Type*  
 FY 2003-04

Disposition Type	Probate	Baker Act	Substance Abuse	Other Social Cases	Guardianship	Trust	Total
Disposed Before Hearing	30,211	12,852	1,987	941	962	230	47,183
Disposed by Judge (No Trial)	27,381	4,820	2,844	1,781	4,133	239	41,198
Disposed by Non-Jury	259	4,884	2,188	2,231	2,634	17	12,213
Disposed by Other	377	498	160	347	74	26	1,482
<b>Total</b>	<b>58,228</b>	<b>23,054</b>	<b>7,179</b>	<b>5,300</b>	<b>7,803</b>	<b>512</b>	<b>102,076</b>

5

**CIRCUIT PROBATE DISPOSITIONS**  
*by Disposition Type*  
 FY 2003-04





**Circuit Probate ❖ Special Proceedings**

The Circuit Probate division also involves special proceedings in the form of reopenings. **These data are provided by the 67 clerks of court. However, special proceedings data are not audited for accuracy by the OSCA.**

**Reopening** - A reopening occurs when a case that has previously been reported as disposed is resubmitted to the court through a motion or petition.

**CIRCUIT PROBATE SPECIAL PROCEEDINGS**  
**by Circuit**  
**FY 2003-04**

Circuit	Reopenings
First (Pensacola)	3,103
Second (Tallahassee)	627
Third (Lake City)	44
Fourth (Jacksonville)	2,085
Fifth (Tavares)	2,759
Sixth (Clearwater)	10,045
Seventh (Daytona Beach)	2,687
Eighth (Gainesville)	613
Ninth (Orlando)	4,861
Tenth (Bartow)	1,950
Eleventh (Miami)	29,976
Twelfth (Sarasota)	2,069
Thirteenth (Tampa)	4,437
Fourteenth (Panama City)	115
Fifteenth (West Palm Beach)	6,558
Sixteenth (Key West)	181
Seventeenth (Ft. Lauderdale)	2,245
Eighteenth (Sanford)	1,672
Nineteenth (Ft. Pierce)	3,286
Twentieth (Ft. Myers)	4,310
<b>Total</b>	<b>83,623</b>

-This page intentionally left blank-