

Circuit Criminal Overview

The Circuit Criminal division includes the following five categories of felony offenses: capital murder, violent crimes, crimes against persons, crimes against property, and drug crimes. Within these categories are the following case types:

Capital Murder - capital murder offenses

Violent Crimes - non-capital murder and sexual offenses

Crimes Against Persons - robbery and other crimes against persons

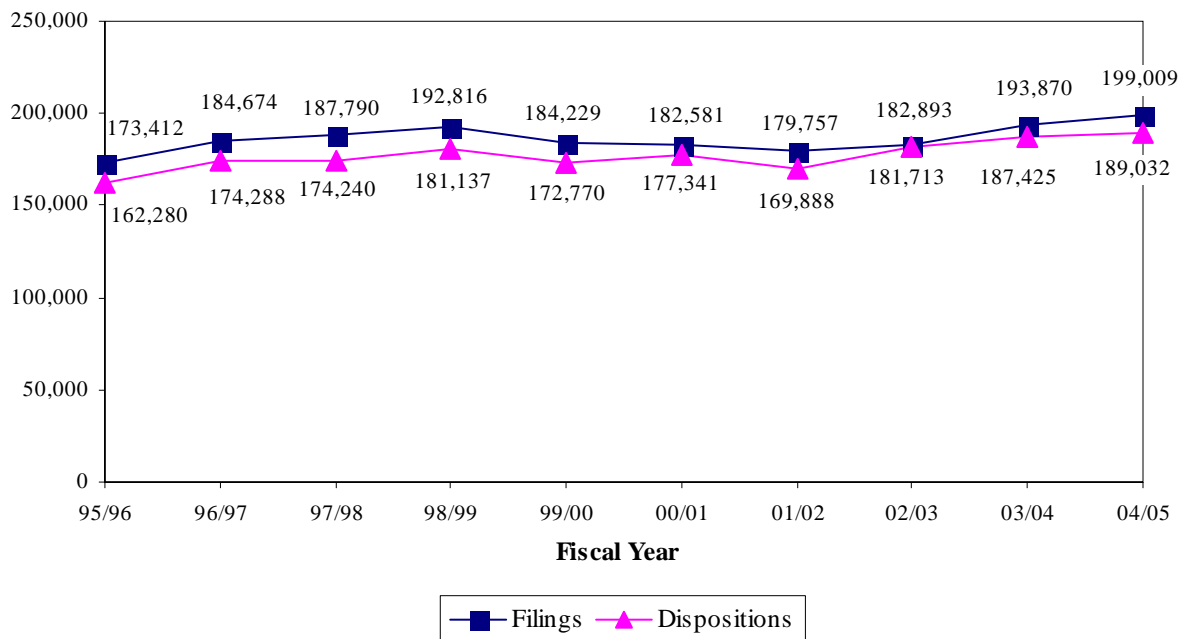
Crimes Against Property - burglary, theft, forgery, fraud, worthless checks, other crimes against property, and other felony offenses¹

Drug Crimes - drug offenses

In the Circuit Criminal division, *Filings* correspond to each defendant against whom an information or indictment is filed. *Dispositions* correspond to each defendant for whom a final judicial decision is rendered terminating a criminal proceeding by an acquittal, a dismissal, or a judgment stating the specific sentence (in the case of a conviction). *Charges* are defined as each individual offense with which a defendant is accused. These charges or counts are tied directly to each filing. *Jury Trials* are defined as trials in which a group of citizens is impaneled, selected and sworn to determine the issues of fact in a case.

CIRCUIT CRIMINAL FILINGS & DISPOSITIONS

FY 1995-96 to FY 2004-05



¹Other felony offenses fall under the “crimes against property” case type because they are handled similarly to property offenses. Examples of other felony offenses are: weapon charges, resisting arrest, contempt of court, failure to appear, accessory after the fact, book-making, etc.

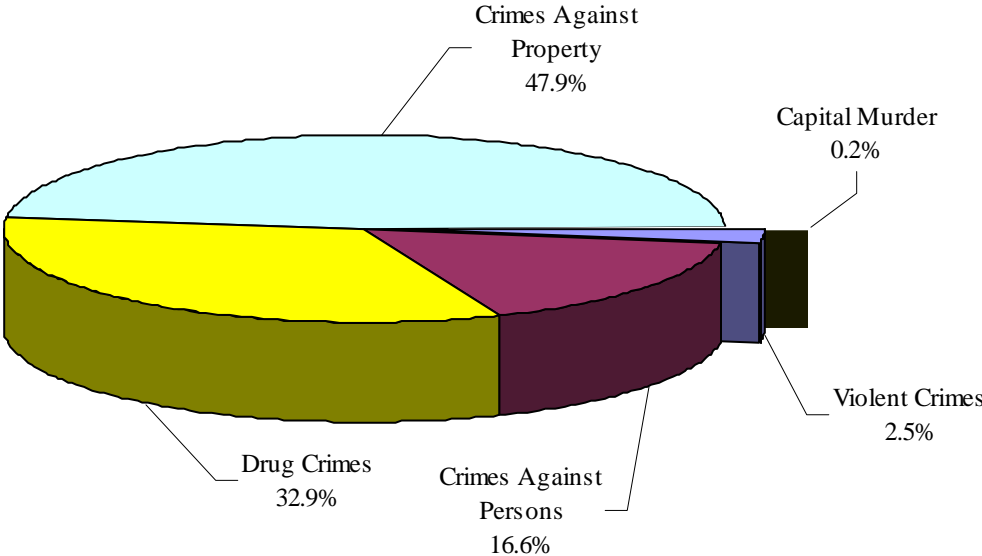
CIRCUIT CRIMINAL FILINGS
Statewide by Category, Case Type, and Month
FY 2004-05

2

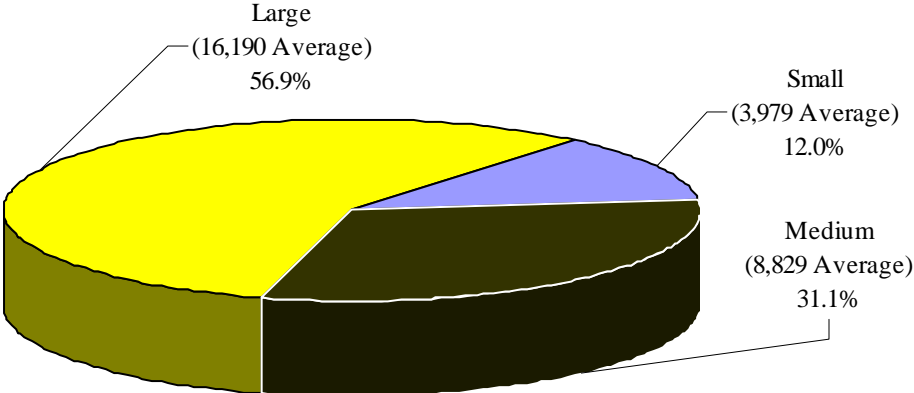
Category/ Case Type	Jul	Aug	Sep	Oct	Nov	Dec	Jan	Feb	Mar	Apr	May	Jun	Total
Capital Murder	41	31	42	31	38	21	39	35	35	35	31	41	420
Capital Murder	41	31	42	31	38	21	39	35	35	35	31	41	420
Violent Crimes	424	391	358	425	360	391	340	420	426	410	458	483	4,886
Non-Capital Murder ²	97	85	65	106	76	92	88	86	97	102	85	113	1,092
Sexual Offenses	327	306	293	319	284	299	252	334	329	308	373	370	3,794
Crimes Against Persons	2,916	2,782	2,488	2,852	2,565	2,742	2,713	2,624	2,842	2,660	2,703	3,079	32,966
Robbery	427	457	371	392	364	437	396	391	404	419	434	523	5,015
Other Crimes Against Persons	2,489	2,325	2,117	2,460	2,201	2,305	2,317	2,233	2,438	2,241	2,269	2,556	27,951
Crimes Against Property	7,843	7,753	6,557	7,681	7,321	7,732	8,042	7,830	8,781	8,053	8,475	9,200	95,268
Burglary	1,444	1,486	1,338	1,568	1,416	1,448	1,468	1,398	1,533	1,315	1,509	1,627	17,550
Theft, Forgery, Fraud	3,356	3,315	2,834	3,103	3,038	3,181	3,262	3,210	3,609	3,266	3,365	3,640	39,179
Worthless Checks	634	453	320	382	410	450	620	448	444	411	408	520	5,500
Other Crimes Against Property	147	121	118	139	120	135	125	135	144	119	137	161	1,601
Other	2,262	2,378	1,947	2,489	2,337	2,518	2,567	2,639	3,051	2,942	3,056	3,252	31,438
Drug Crimes	5,154	5,176	4,689	5,028	5,038	5,319	5,217	5,514	6,438	5,849	5,928	6,119	65,469
Drugs	5,154	5,176	4,689	5,028	5,038	5,319	5,217	5,514	6,438	5,849	5,928	6,119	65,469
Total	16,378	16,133	14,134	16,017	15,322	16,205	16,351	16,423	18,522	17,007	17,595	18,922	199,009

²Examples of Non-Capital Murder cases include: negligent manslaughter, vehicular manslaughter, unpremeditated murder, commission of a felony which causes death, aggravated manslaughter, and other similar offenses.

CIRCUIT CRIMINAL FILINGS
by Category
FY 2004-05



CIRCUIT CRIMINAL FILINGS
*by Circuit Size**
FY 2004-05



*Small Circuits- 2nd, 3rd, 8th, 14th, 16th, 19th;
Medium Circuits- 1st, 5th, 7th, 10th, 12th, 18th, 20th;
Large Circuits- 4th, 6th, 9th, 11th, 13th, 15th, 17th (as defined in the Glossary).

CIRCUIT CRIMINAL FILINGS
by Case Type and Circuit
FY 2004-05

2

Circuit	Capital Murder	Non-Capital Murder	Sexual Offenses	Robbery	Other Crimes Against Persons	Burglary	Theft Forgery Fraud	Worthless Checks	Other Crimes Against Property	Drugs	Other	Total
1	20	27	279	205	1,832	1,043	2,325	247	123	3,010	1,476	10,587
2	13	29	104	143	954	497	1,470	146	45	1,260	675	5,336
3	4	6	56	41	250	236	479	5	23	704	354	2,158
4	24	63	291	218	1,019	504	1,744	2,447	65	2,724	931	10,030
5	15	66	278	164	1,606	968	2,370	301	108	2,655	1,684	10,215
6	22	57	308	227	3,093	1,139	3,724	640	143	4,875	2,712	16,940
7	26	43	165	221	1,417	675	1,743	527	103	2,982	1,334	9,236
8	4	19	102	97	691	494	963	37	32	1,374	798	4,611
9	51	132	348	570	2,481	1,587	3,170	38	188	4,227	3,251	16,043
10	11	55	186	140	881	1,012	1,675	300	60	2,808	1,443	8,571
11	96	212	354	1,107	3,212	2,194	4,498	79	145	11,242	2,864	26,003
12	10	23	122	102	668	670	1,519	121	61	2,245	1,348	6,889
13	25	69	157	375	2,018	1,542	3,784	240	117	6,431	3,270	18,028
14	5	30	102	66	617	376	863	6	39	1,582	784	4,470
15	26	88	173	395	1,485	1,326	1,815	77	53	3,609	1,897	10,944
16	0	4	10	12	241	103	216	57	10	440	209	1,302
17	33	54	236	438	2,104	1,248	2,754	16	74	6,181	2,203	15,341
18	21	34	178	151	1,101	589	1,741	137	58	2,446	1,592	8,048
19	9	30	147	79	944	433	825	73	72	2,130	1,257	5,999
20	5	51	198	264	1,337	914	1,501	6	82	2,544	1,356	8,258
Total	420	1,092	3,794	5,015	27,951	17,550	39,179	5,500	1,601	65,469	31,438	199,009

CIRCUIT CRIMINAL FILINGS
by Category and Circuit/County
FY 2004-05

Circuit/County	Capital Murder	Violent Crimes	Crimes Against Persons	Crimes Against Property	Drug Crimes	Total
Circuit 1	20	306	2,037	5,214	3,010	10,587
Escambia	18	183	1,218	2,805	1,566	5,790
Okaloosa	0	58	456	1,312	799	2,625
Santa Rosa	2	43	241	566	310	1,162
Walton	0	22	122	531	335	1,010
Circuit 2	13	133	1,097	2,833	1,260	5,336
Franklin	1	11	44	99	63	218
Gadsden	5	23	201	346	184	759
Jefferson	0	4	38	87	48	177
Leon	6	74	715	2,085	838	3,718
Liberty	0	4	10	32	35	81
Wakulla	1	17	89	184	92	383
Circuit 3	4	62	291	1,097	704	2,158
Columbia	3	23	83	442	285	836
Dixie	0	0	14	54	20	88
Hamilton	0	5	34	115	66	220
Lafayette	0	1	15	27	9	52
Madison	0	2	47	107	42	198
Suwannee	1	26	61	235	226	549
Taylor	0	5	37	117	56	215
Circuit 4	24	354	1,237	5,691	2,724	10,030
Clay	1	65	113	642	227	1,048
Duval	22	262	1,029	4,775	2,309	8,397
Nassau	1	27	95	274	188	585

CIRCUIT CRIMINAL FILINGS, Continued
by Category and Circuit/County
FY 2004-05

Circuit/County	Capital Murder	Violent Crimes	Crimes Against Persons	Crimes Against Property	Drug Crimes	Total
Circuit 5	15	344	1,770	5,431	2,655	10,215
Citrus	3	35	179	601	263	1,081
Hernando	1	71	362	967	354	1,755
Lake	5	114	579	1,632	770	3,100
Marion	5	112	564	1,945	1,029	3,655
Sumter	1	12	86	286	239	624
Circuit 6	22	365	3,320	8,358	4,875	16,940
Pasco	7	137	665	2,109	937	3,855
Pinellas	15	228	2,655	6,249	3,938	13,085
Circuit 7	26	208	1,638	4,382	2,982	9,236
Flagler	0	31	161	331	193	716
Putnam	1	23	95	389	213	721
St. Johns	8	38	283	758	363	1,450
Volusia	17	116	1,099	2,904	2,213	6,349
Circuit 8	4	121	788	2,324	1,374	4,611
Alachua	2	66	573	1,721	982	3,344
Baker	0	7	50	127	144	328
Bradford	1	21	49	178	95	344
Gilchrist	0	5	25	76	24	130
Levy	1	9	45	106	99	260
Union	0	13	46	116	30	205
Circuit 9	51	480	3,051	8,234	4,227	16,043
Orange	36	408	2,544	7,147	3,101	13,236
Osceola	15	72	507	1,087	1,126	2,807

CIRCUIT CRIMINAL FILINGS, Continued
by Category and Circuit/County
FY 2004-05

Circuit/County	Capital Murder	Violent Crimes	Crimes Against Persons	Crimes Against Property	Drug Crimes	Total
Circuit 10	11	241	1,021	4,490	2,808	8,571
Hardee	0	6	53	158	118	335
Highlands	0	26	117	468	253	864
Polk	11	209	851	3,864	2,437	7,372
Circuit 11	96	566	4,319	9,780	11,242	26,003
Dade	96	566	4,319	9,780	11,242	26,003
Circuit 12	10	145	770	3,719	2,245	6,889
Desoto	6	17	114	247	202	586
Manatee	3	58	305	1,677	902	2,945
Sarasota	1	70	351	1,795	1,141	3,358
Circuit 13	25	226	2,393	8,953	6,431	18,028
Hillsborough	25	226	2,393	8,953	6,431	18,028
Circuit 14	5	132	683	2,068	1,582	4,470
Bay	5	80	409	1,423	1,058	2,975
Calhoun	0	8	40	86	79	213
Gulf	0	10	42	88	67	207
Holmes	0	4	29	132	155	320
Jackson	0	19	122	239	136	516
Washington	0	11	41	100	87	239
Circuit 15	26	261	1,880	5,168	3,609	10,944
Palm Beach	26	261	1,880	5,168	3,609	10,944
Circuit 16	0	14	253	595	440	1,302
Monroe	0	14	253	595	440	1,302

CIRCUIT CRIMINAL FILINGS, Continued
by Category and Circuit/County
FY 2004-05

Circuit/County	Capital Murder	Violent Crimes	Crimes Against Persons	Crimes Against Property	Drug Crimes	Total
Circuit 17	33	290	2,542	6,295	6,181	15,341
Broward	33	290	2,542	6,295	6,181	15,341
Circuit 18	21	212	1,252	4,117	2,446	8,048
Brevard	10	119	684	2,455	1,526	4,794
Seminole	11	93	568	1,662	920	3,254
Circuit 19	9	177	1,023	2,660	2,130	5,999
Indian River	2	37	182	749	454	1,424
Martin	4	19	166	708	471	1,368
Okeechobee	0	27	115	309	191	642
St. Lucie	3	94	560	894	1,014	2,565
Circuit 20	5	249	1,601	3,859	2,544	8,258
Charlotte	0	39	247	670	446	1,402
Collier	1	72	562	1,295	830	2,760
Glades	0	11	14	67	41	133
Hendry	1	14	106	207	130	458
Lee	3	113	672	1,620	1,097	3,505
State Total	420	4,886	32,966	95,268	65,469	199,009

CIRCUIT CRIMINAL CHARGES
by Circuit/County
FY 2004-05

2

Circuit/County	Total Filings (Defendants)	Total Charges	Number of Charges per Defendant
Circuit 1	10,587	22,110	2.1
Escambia	5,790	13,221	2.3
Okaloosa	2,625	4,597	1.8
Santa Rosa	1,162	2,315	2.0
Walton	1,010	1,977	2.0
Circuit 2	5,336	10,878	2.0
Franklin	218	400	1.8
Gadsden	759	1,247	1.6
Jefferson	177	292	1.6
Leon	3,718	8,133	2.2
Liberty	81	132	1.6
Wakulla	383	674	1.8
Circuit 3	2,158	4,494	2.1
Columbia	836	1,737	2.1
Dixie	88	143	1.6
Hamilton	220	443	2.0
Lafayette	52	90	1.7
Madison	198	460	2.3
Suwannee	549	1,240	2.3
Taylor	215	381	1.8
Circuit 4	10,030	20,315	2.0
Clay	1,048	1,623	1.5
Duval	8,397	17,700	2.1
Nassau	585	992	1.7

CIRCUIT CRIMINAL CHARGES, Continued
by Circuit/County
FY 2004-05

2

Circuit/County	Total Filings (Defendants)	Total Charges	Number of Charges per Defendant
Circuit 5	10,215	21,808	2.1
Citrus	1,081	2,423	2.2
Hernando	1,755	3,330	1.9
Lake	3,100	7,456	2.4
Marion	3,655	7,353	2.0
Sumter	624	1,246	2.0
Circuit 6	16,940	28,484	1.7
Pasco	3,855	6,710	1.7
Pinellas	13,085	21,774	1.7
Circuit 7	9,236	13,488	1.5
Flagler	716	1,187	1.7
Putnam	721	1,026	1.4
St. Johns	1,450	2,430	1.7
Volusia	6,349	8,845	1.4
Circuit 8	4,611	9,376	2.0
Alachua	3,344	6,876	2.1
Baker	328	680	2.1
Bradford	344	598	1.7
Gilchrist	130	241	1.9
Levy	260	615	2.4
Union	205	366	1.8
Circuit 9	16,043	30,809	1.9
Orange	13,236	25,759	1.9
Osceola	2,807	5,050	1.8

CIRCUIT CRIMINAL CHARGES, Continued
by Circuit/County
FY 2004-05

2

Circuit/County	Total Filings (Defendants)	Total Charges	Number of Charges per Defendant
Circuit 10	8,571	22,093	2.6
Hardee	335	754	2.3
Highlands	864	2,427	2.8
Polk	7,372	18,912	2.6
Circuit 11	26,003	55,402	2.1
Dade	26,003	55,402	2.1
Circuit 12	6,889	11,922	1.7
Desoto	586	438	0.7
Manatee	2,945	5,108	1.7
Sarasota	3,358	6,376	1.9
Circuit 13	18,028	37,831	2.1
Hillsborough	18,028	37,831	2.1
Circuit 14	4,470	8,564	1.9
Bay	2,975	5,868	2.0
Calhoun	213	477	2.2
Gulf	207	366	1.8
Holmes	320	578	1.8
Jackson	516	864	1.7
Washington	239	411	1.7
Circuit 15	10,944	18,955	1.7
Palm Beach	10,944	18,955	1.7
Circuit 16	1,302	2,523	1.9
Monroe	1,302	2,523	1.9

CIRCUIT CRIMINAL CHARGES, Continued
by Circuit/County
FY 2004-05

2

Circuit/County	Total Filings (Defendants)	Total Charges	Number of Charges per Defendant
Circuit 17	15,341	33,863	2.2
Broward	15,341	33,863	2.2
Circuit 18	8,048	16,630	2.1
Brevard	4,794	9,862	2.1
Seminole	3,254	6,768	2.1
Circuit 19	5,999	14,404	2.4
Indian River	1,424	2,863	2.0
Martin	1,368	3,152	2.3
Okeechobee	642	1,660	2.6
St. Lucie	2,565	6,729	2.6
Circuit 20	8,258	17,345	2.1
Charlotte	1,402	3,698	2.6
Collier	2,760	5,794	2.1
Glades	133	214	1.6
Hendry	458	877	1.9
Lee	3,505	6,762	1.9
State Total	199,009	401,294	2.0

Circuit Criminal ❖ Dispositions

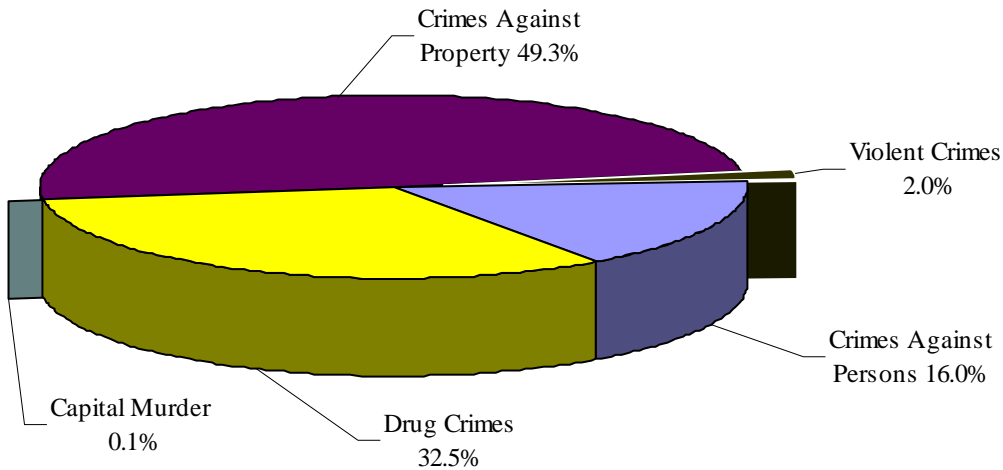
CIRCUIT CRIMINAL DISPOSITIONS
Statewide by Category, Case Type, and Month
FY 2004-05

2

Category/ Case Type	Jul	Aug	Sep	Oct	Nov	Dec	Jan	Feb	Mar	Apr	May	Jun	Total
Capital Murder	18	19	21	27	13	14	16	18	15	19	24	14	218
Capital Murder	18	19	21	27	13	14	16	18	15	19	24	14	218
Violent Crimes	310	344	269	347	291	282	330	291	344	329	291	356	3,784
Non-Capital Murder	64	83	58	81	62	67	80	66	75	71	74	85	866
Sexual Offenses	246	261	211	266	229	215	250	225	269	258	217	271	2,918
Crimes Against Persons	2,519	2,770	2,143	2,737	2,366	2,204	2,654	2,566	2,604	2,503	2,468	2,750	30,284
Robbery	409	456	352	396	331	336	409	381	389	366	363	441	4,629
Other Crimes Against Persons	2,110	2,314	1,791	2,341	2,035	1,868	2,245	2,185	2,215	2,137	2,105	2,309	25,655
Crimes Against Property	7,267	8,210	6,395	8,028	7,727	6,685	8,190	7,677	8,565	8,224	7,479	8,800	93,247
Burglary	1,270	1,408	1,133	1,462	1,308	1,125	1,302	1,300	1,472	1,321	1,227	1,423	15,751
Theft, Forgery, Fraud	3,085	3,529	2,731	3,337	3,173	2,835	3,413	3,218	3,531	3,435	3,048	3,658	38,993
Worthless Checks	478	498	417	480	511	386	613	439	476	448	378	479	5,603
Other Crimes Against Property	143	166	100	129	142	97	147	147	163	132	123	161	1,650
Other	2,291	2,609	2,014	2,620	2,593	2,242	2,715	2,573	2,923	2,888	2,703	3,079	31,250
Drug Crimes	4,814	5,446	4,229	5,220	4,644	4,515	5,224	5,138	5,560	5,493	5,302	5,914	61,499
Drugs	4,814	5,446	4,229	5,220	4,644	4,515	5,224	5,138	5,560	5,493	5,302	5,914	61,499
Total	14,928	16,789	13,057	16,359	15,041	13,700	16,414	15,690	17,088	16,568	15,564	17,834	189,032

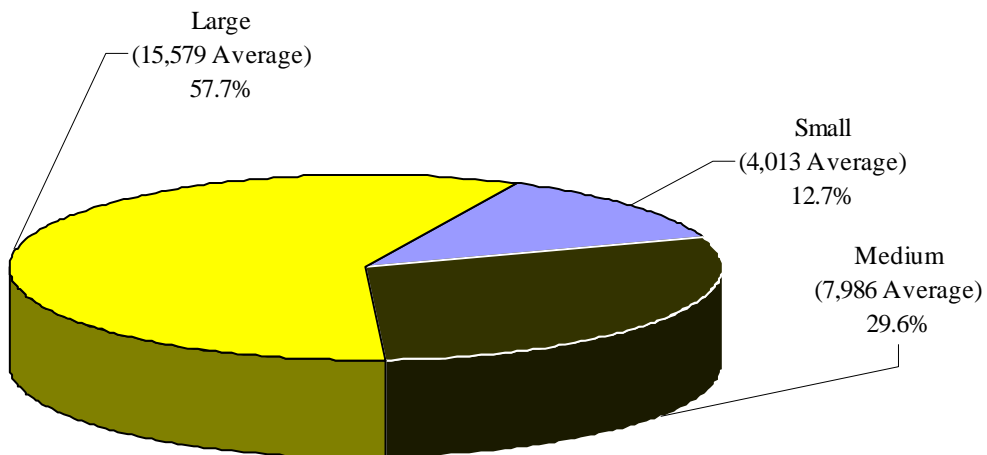
CIRCUIT CRIMINAL DISPOSITIONS

by Category
FY 2004-05



CIRCUIT CRIMINAL DISPOSITIONS

by Circuit Size*
FY 2004-05



*Small Circuits- 2nd, 3rd, 8th, 14th, 16th, 19th;
Medium Circuits- 1st, 5th, 7th, 10th, 12th, 18th, 20th;
Large Circuits- 4th, 6th, 9th, 11th, 13th, 15th, 17th (as defined in the Glossary).

Circuit Criminal ❖ **Dispositions**

CIRCUIT CRIMINAL DISPOSITIONS
by Case Type and Circuit
FY 2004-05

Circuit	Capital Murder	Non-Capital Murder	Sexual Offenses	Robbery	Other Crimes Against Persons	Burglary	Theft Forgery Fraud	Worthless Checks	Other Crimes Against Property	Drugs	Other	Total
1	8	24	205	156	1,646	877	2,055	307	107	2,731	1,685	9,801
2	3	15	105	120	942	460	1,573	224	59	1,324	699	5,524
3	0	11	50	47	226	209	446	10	19	484	279	1,781
4	15	52	211	267	1,177	654	1,901	1,718	61	3,041	916	10,013
5	9	51	234	156	1,669	953	2,320	272	124	2,425	1,799	10,012
6	23	36	205	252	2,186	997	3,534	694	151	4,451	2,757	15,286
7	11	37	133	180	1,389	648	1,734	508	90	2,979	1,365	9,074
8	7	19	89	112	664	495	1,051	65	37	1,299	797	4,635
9	25	60	226	459	2,011	1,134	3,112	326	175	4,242	2,459	14,229
10	15	26	142	123	755	670	1,565	389	63	1,871	1,832	7,451
11	24	198	295	966	3,617	2,196	5,182	191	164	11,812	3,114	27,759
12	3	30	99	138	634	540	1,421	170	55	1,892	1,174	6,156
13	15	69	102	356	1,840	1,398	3,567	313	120	5,452	3,445	16,677
14	2	30	86	67	633	377	965	13	39	1,565	844	4,621
15	8	59	130	383	1,642	1,135	2,275	100	106	3,863	1,800	11,501
16	1	3	11	13	205	71	201	51	8	431	217	1,212
17	20	66	190	415	1,714	1,160	2,343	11	56	5,642	1,971	13,588
18	13	22	120	121	874	576	1,496	126	66	1,813	1,306	6,533
19	11	32	139	81	842	484	902	112	79	2,127	1,498	6,307
20	5	26	146	217	989	717	1,350	3	71	2,055	1,293	6,872
Total	218	866	2,918	4,629	25,655	15,751	38,993	5,603	1,650	61,499	31,250	189,032

CIRCUIT CRIMINAL DISPOSITIONS
by Category and Circuit/County
FY 2004-05

Circuit/County	Capital Murder	Violent Crimes	Crimes Against Persons	Crimes Against Property	Drug Crimes	Total
Circuit 1	8	229	1,802	5,031	2,731	9,801
Escambia	7	123	996	2,607	1,385	5,118
Okaloosa	0	44	415	1,290	698	2,447
Santa Rosa	1	43	227	538	245	1,054
Walton	0	19	164	596	403	1,182
Circuit 2	3	120	1,062	3,015	1,324	5,524
Franklin	0	4	31	55	42	132
Gadsden	0	30	190	405	238	863
Jefferson	0	3	32	78	50	163
Leon	3	59	700	2,269	858	3,889
Liberty	0	3	13	35	29	80
Wakulla	0	21	96	173	107	397
Circuit 3	0	61	273	963	484	1,781
Columbia	0	22	77	412	186	697
Dixie	0	3	11	28	30	72
Hamilton	0	2	28	67	15	112
Lafayette	0	1	23	32	14	70
Madison	0	8	45	98	44	195
Suwannee	0	22	61	240	164	487
Taylor	0	3	28	86	31	148
Circuit 4	15	263	1,444	5,250	3,041	10,013
Clay	0	51	155	733	208	1,147
Duval	13	187	1,113	4,086	2,581	7,980
Nassau	2	25	176	431	252	886



Circuit Criminal ❖ Dispositions

CIRCUIT CRIMINAL DISPOSITIONS, Continued
by Category and Circuit/County
FY 2004-05

Circuit/County	Capital Murder	Violent Crimes	Crimes Against Persons	Crimes Against Property	Drug Crimes	Total
Circuit 5	9	285	1,825	5,468	2,425	10,012
Citrus	0	39	169	561	227	996
Hernando	1	54	362	889	328	1,634
Lake	5	64	626	1,658	691	3,044
Marion	3	114	593	2,025	978	3,713
Sumter	0	14	75	335	201	625
Circuit 6	23	241	2,438	8,133	4,451	15,286
Pasco	8	63	592	1,746	821	3,230
Pinellas	15	178	1,846	6,387	3,630	12,056
Circuit 7	11	170	1,569	4,345	2,979	9,074
Flagler	1	13	160	286	267	727
Putnam	1	31	117	423	285	857
St. Johns	2	36	262	746	323	1,369
Volusia	7	90	1,030	2,890	2,104	6,121
Circuit 8	7	108	776	2,445	1,299	4,635
Alachua	6	68	585	1,839	941	3,439
Baker	0	4	45	127	126	302
Bradford	1	21	64	218	105	409
Gilchrist	0	3	15	73	25	116
Levy	0	7	20	76	67	170
Union	0	5	47	112	35	199
Circuit 9	25	286	2,470	7,206	4,242	14,229
Orange	18	218	1,975	6,017	2,932	11,160
Osceola	7	68	495	1,189	1,310	3,069

CIRCUIT CRIMINAL DISPOSITIONS, Continued
by Category and Circuit/County
FY 2004-05

Circuit/County	Capital Murder	Violent Crimes	Crimes Against Persons	Crimes Against Property	Drug Crimes	Total
Circuit 10	15	168	878	4,519	1,871	7,451
Hardee	0	7	36	161	98	302
Highlands	0	17	91	386	168	662
Polk	15	144	751	3,972	1,605	6,487
Circuit 11	24	493	4,583	10,847	11,812	27,759
Dade	24	493	4,583	10,847	11,812	27,759
Circuit 12	3	129	772	3,360	1,892	6,156
Desoto	2	15	101	218	153	489
Manatee	1	58	323	1,552	784	2,718
Sarasota	0	56	348	1,590	955	2,949
Circuit 13	15	171	2,196	8,843	5,452	16,677
Hillsborough	15	171	2,196	8,843	5,452	16,677
Circuit 14	2	116	700	2,238	1,565	4,621
Bay	2	58	377	1,433	1,013	2,883
Calhoun	0	9	57	128	59	253
Gulf	0	14	46	110	100	270
Holmes	0	4	29	128	128	289
Jackson	0	18	110	204	104	436
Washington	0	13	81	235	161	490
Circuit 15	8	189	2,025	5,416	3,863	11,501
Palm Beach	8	189	2,025	5,416	3,863	11,501
Circuit 16	1	14	218	548	431	1,212
Monroe	1	14	218	548	431	1,212

Circuit Criminal ❖ Dispositions

CIRCUIT CRIMINAL DISPOSITIONS, Continued
by Category and Circuit/County
FY 2004-05

2

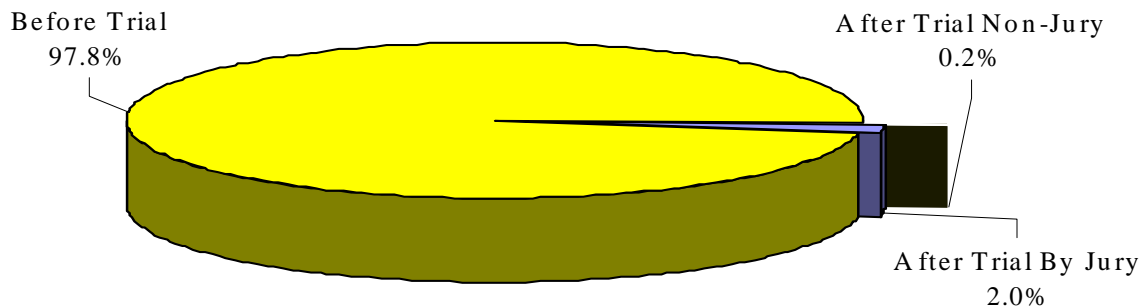
Circuit/County	Capital Murder	Violent Crimes	Crimes Against Persons	Crimes Against Property	Drug Crimes	Total
Circuit 17	20	256	2,129	5,541	5,642	13,588
Broward	20	256	2,129	5,541	5,642	13,588
Circuit 18	13	142	995	3,570	1,813	6,533
Brevard	8	73	503	2,093	1,011	3,688
Seminole	5	69	492	1,477	802	2,845
Circuit 19	11	171	923	3,075	2,127	6,307
Indian River	1	29	158	738	423	1,349
Martin	1	24	131	625	396	1,177
Okeechobee	1	22	124	333	192	672
St. Lucie	8	96	510	1,379	1,116	3,109
Circuit 20	5	172	1,206	3,434	2,055	6,872
Charlotte	1	26	219	702	332	1,280
Collier	2	60	465	1,225	638	2,390
Glades	0	6	12	73	57	148
Hendry	0	15	70	148	83	316
Lee	2	65	440	1,286	945	2,738
State Total	218	3,784	30,284	93,247	61,499	189,032

CIRCUIT CRIMINAL DISPOSITIONS
Statewide by Case Type and Disposition Type
FY 2004-05

2

Disposition Type	Capital Murder	Non-Capital Murder	Sexual Offenses	Robbery	Other Crimes Against Persons	Burglary	Theft Forgery Fraud	Worthless Checks	Other Crimes Against Property	Drugs	Other	Total
Before Trial	103	612	2,569	4,270	24,666	15,325	38,628	5,595	1,596	60,844	30,670	184,878
Speedy Trial	0	0	1	1	2	0	1	3	0	0	3	11
Dismissed	33	104	482	717	3,880	1,558	4,095	2,347	195	5,566	1,863	20,840
Transferred	0	1	17	3	294	66	106	13	22	164	1,133	1,819
Plea	52	483	1,956	3,431	18,493	12,959	29,494	2,292	1,184	50,058	26,103	146,505
Other ³	18	24	113	118	1,997	742	4,932	940	195	5,056	1,568	15,703
After Trial Non-Jury	1	3	9	6	106	42	73	5	11	71	134	461
Acquittal/Dismissal	0	3	2	0	55	10	13	3	4	10	17	117
Plea	0	0	3	2	23	23	32	2	3	44	63	195
Conviction	1	0	4	4	28	9	28	0	4	17	54	149
After Trial By Jury	114	251	340	353	883	384	292	3	43	584	446	3,693
Acquittal/Dismissal	14	53	100	90	340	102	114	0	16	187	83	1,099
Plea	1	23	17	30	69	43	31	1	2	64	71	352
Conviction	99	175	223	233	474	239	147	2	25	333	292	2,242
Total	218	866	2,918	4,629	25,655	15,751	38,993	5,603	1,650	61,499	31,250	189,032

CRIMINAL DISPOSITIONS
by Disposition Type
FY 2004-05



³The disposition category "Other" is used to report cases as disposed for: defendants placed on deferred prosecution or other pretrial diversion or probation program approved after an information or indictment is filed, defendants declared mentally or physically unable to stand trial, cases disposed upon estreatment of a bond, cases that are nolle prosequi (no further prosecution) for administrative reasons, etc.

Circuit Criminal ❖ Dispositions

CIRCUIT CRIMINAL JURY TRIAL DISPOSITIONS
by Circuit
FY 2004-05

2

Circuit	Acquittals/ Dismissals	Pleas	Convictions	Total
First (Pensacola)	54	8	122	184
Second (Tallahassee)	36	0	98	134
Third (Lake City)	3	3	20	26
Fourth (Jacksonville)	15	40	59	114
Fifth (Tavares)	51	12	95	158
Sixth (Clearwater)	79	7	155	241
Seventh (Daytona Beach)	29	16	77	122
Eighth (Gainesville)	30	4	64	98
Ninth (Orlando)	123	4	194	321
Tenth (Bartow)	47	11	129	187
Eleventh (Miami)	125	91	251	467
Twelfth (Sarasota)	33	12	91	136
Thirteenth (Tampa)	75	46	196	317
Fourteenth (Panama City)	22	8	48	78
Fifteenth (West Palm Beach)	61	18	65	144
Sixteenth (Key West)	4	10	2	16
Seventeenth (Ft. Lauderdale)	192	3	289	484
Eighteenth (Sanford)	51	35	98	184
Nineteenth (Ft. Pierce)	44	9	104	157
Twentieth (Ft. Myers)	25	15	85	125
Total	1,099	352	2,242	3,693

CIRCUIT CRIMINAL JURY TRIAL AND CONVICTION RATES

by Circuit

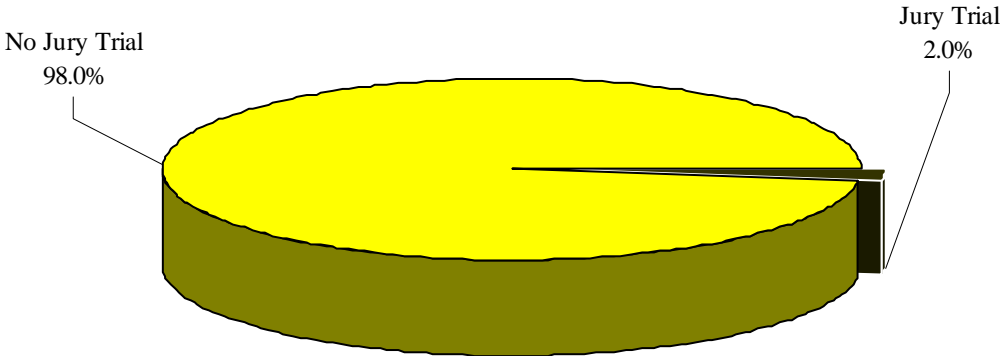
FY 2004-05

2

Circuit	By Jury - Acquittals/ Dismissals, Pleas, & Convictions	Total Dispositions	Jury Trial Rates	Total Pleas & Convictions	Total Dispositions (excludes Transferred and Other)	Conviction Rates
First (Pensacola)	184	9,801	1.9%	8,163	9,381	87.0%
Second (Tallahassee)	134	5,524	2.4%	4,800	5,428	88.4%
Third (Lake City)	26	1,781	1.5%	1,555	1,667	93.3%
Fourth (Jacksonville)	114	10,013	1.1%	7,105	9,809	72.4%
Fifth (Tavares)	158	10,012	1.6%	8,124	9,332	87.1%
Sixth (Clearwater)	241	15,286	1.6%	12,311	13,006	94.7%
Seventh (Daytona Beach)	122	9,074	1.3%	7,488	8,448	88.6%
Eighth (Gainesville)	98	4,635	2.1%	3,728	4,277	87.2%
Ninth (Orlando)	321	14,229	2.3%	10,393	13,248	78.4%
Tenth (Bartow)	187	7,451	2.5%	6,337	6,965	91.0%
Eleventh (Miami)	467	27,759	1.7%	20,687	23,189	89.2%
Twelfth (Sarasota)	136	6,156	2.2%	5,304	5,846	90.7%
Thirteenth (Tampa)	317	16,677	1.9%	13,796	15,088	91.4%
Fourteenth (Panama City)	78	4,621	1.7%	3,576	4,082	87.6%
Fifteenth (West Palm Beach)	144	11,501	1.3%	8,785	10,574	83.1%
Sixteenth (Key West)	16	1,212	1.3%	928	1,068	86.9%
Seventeenth (Ft. Lauderdale)	484	13,588	3.6%	10,915	12,626	86.4%
Eighteenth (Sanford)	184	6,533	2.8%	5,624	5,946	94.6%
Nineteenth (Ft. Pierce)	157	6,307	2.5%	4,225	4,840	87.3%
Twentieth (Ft. Myers)	125	6,872	1.8%	5,599	6,690	83.7%
Total	3,693	189,032	2.0%	149,443	171,510	87.1%

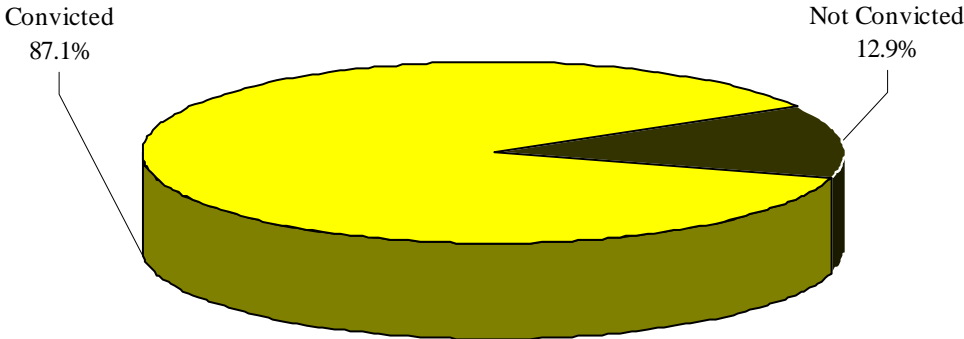
CIRCUIT CRIMINAL JURY TRIAL RATE

FY 2004-05



CIRCUIT CRIMINAL CONVICTION RATE

FY 2004-05



The Circuit Criminal division also involves special proceedings such as reopenings, no files, appeals filed from county court, post conviction relief motions, probation revocation hearings, bond hearings, and adversary preliminary hearings. **These data are provided by the 67 clerks of court. However, special proceedings data are not audited for accuracy by the OSCA.**

Reopening - A reopening occurs when a case, that has previously been reported as disposed, is resubmitted to the court through a motion or petition.

No File - A no file occurs when all charges against a defendant are dropped because the prosecutor did not file an information or seek an indictment.

Appeal Filed From County Court - An appeal filed from county court is a request that a case be removed from the county court and sent to the circuit court for review.

Post Conviction Relief Motion - A post conviction relief motion is a motion to vacate, set aside, or correct a sentence pursuant to rule 3.850, Florida Rules of Criminal Procedure.

Probation Revocation Hearing - A probation revocation hearing is a proceeding in which a judge determines whether a defendant's probation should be modified or revoked following an alleged violation.

Bond Hearing - A bond hearing is a hearing in which a circuit judge, or a county court judge acting as a circuit judge, considers a defendant's pretrial release status at a special hearing for the purpose of setting or modifying bond or other pretrial release.

Adversary Preliminary Hearing - An adversary preliminary hearing is a proceeding in which a judge considers evidence presented so that the court can determine whether there is sufficient cause to hold the accused for trial.

CIRCUIT CRIMINAL SPECIAL PROCEEDINGS
by Circuit
FY 2004-05

2

Circuit	Reopenings	No Files	Appeals Filed	Post Conviction Relief Motions	Probation Revocation Hearings	Bond Hearings	Adversary Preliminary Hearings	Total
1	4,604	540	24	692	5,824	857	0	12,541
2	1,842	381	14	1,018	3,057	64	0	6,376
3	85	202	9	8	1,908	74	1	2,287
4	287	5,714	7	346	2,402	337	16	9,109
5	3,928	2,064	30	169	6,352	191	0	12,734
6	6,086	3,235	89	681	8,112	12,992	10	31,205
7	2,283	4,300	1	384	5,703	326	0	12,997
8	613	1,719	11	72	6,268	2,193	0	10,876
9	7,832	3,730	213	798	5,373	964	0	18,910
10	597	1,516	51	655	1,997	367	60	5,243
11	47	9,747	83	2,130	7,685	9,265	56	29,013
12	3,977	2,285	9	222	2,925	1,689	16	11,123
13	10,125	2,482	13	323	8,580	9,602	901	32,026
14	665	743	0	51	3,465	417	0	5,341
15	214	5,843	88	217	3,955	1,179	0	11,496
16	360	99	2	9	733	28	0	1,231
17	5,581	2,653	63	6,701	9,473	2,034	3	26,508
18	4,187	1,944	56	223	6,039	2,909	0	15,358
19	2,954	1,849	203	232	2,551	1,767	10	9,566
20	1,819	2,879	53	454	5,064	1,402	11	11,682
Total	58,086	53,925	1,019	15,385	97,466	48,657	1,084	275,622

-This page intentionally left blank-