

**Circuit Probate ❖ Overview**

The Circuit Probate division includes the following two categories of probate cases: probate & other probate and trust & guardianship. Within these categories are the following case types:

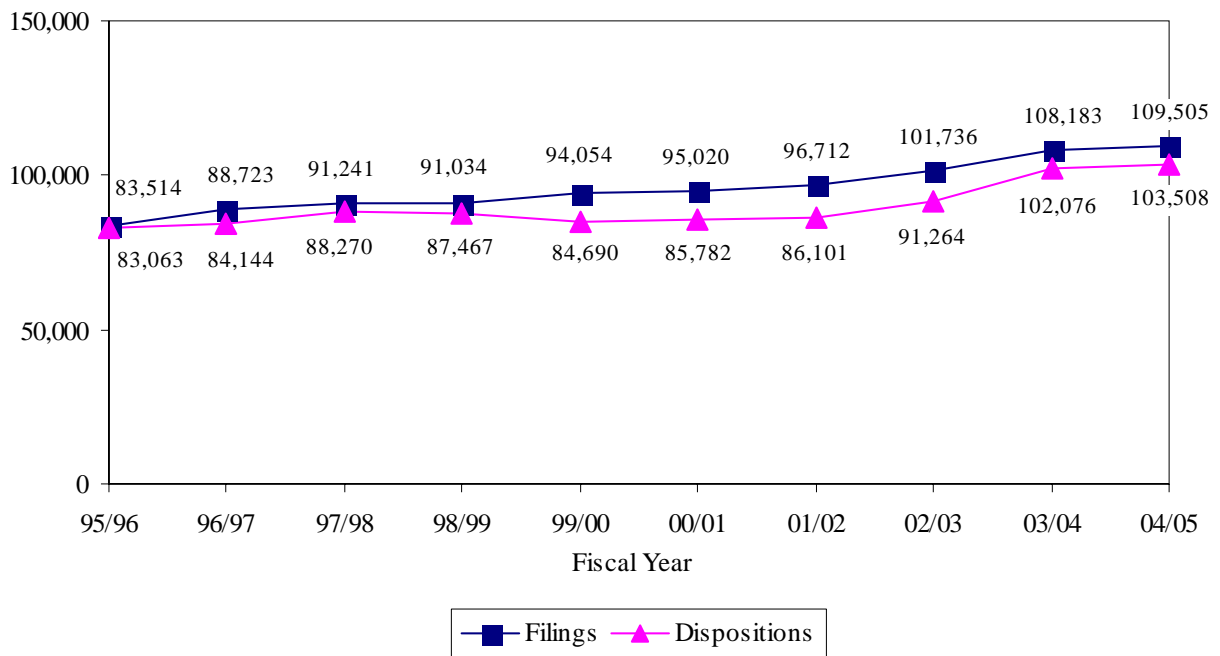
**Probate & Other Probate** - probate, Baker Act, substance abuse, and other social cases

**Trust & Guardianship** - guardianship and trust

In the Circuit Probate division, *Filings* correspond to each petition filed. *Dispositions* correspond to each petition disposed.

**CIRCUIT PROBATE FILINGS & DISPOSITIONS**

*FY 1995-96 to FY 2004-05*

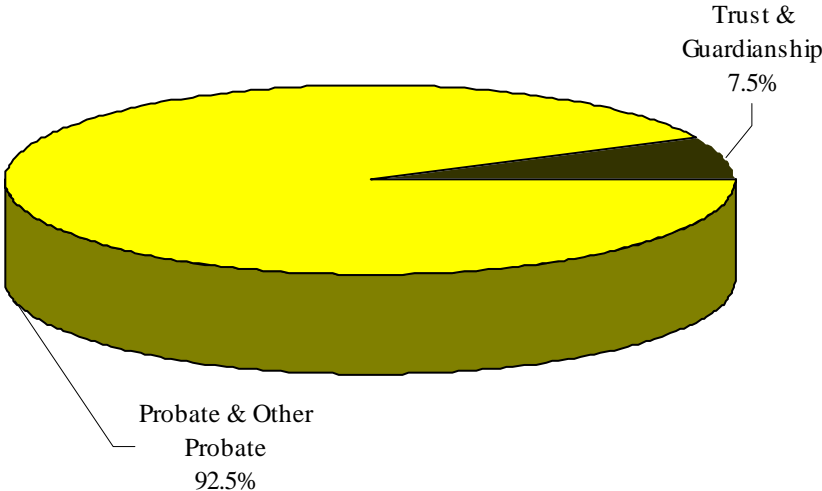


**CIRCUIT PROBATE FILINGS**  
*Statewide by Category, Case Type and Month*  
**FY 2004-05**

Category/ Case Type	Jul	Aug	Sep	Oct	Nov	Dec	Jan	Feb	Mar	Apr	May	Jun	Total
<b>Probate &amp; Other Probate</b>	<b>7,865</b>	<b>8,449</b>	<b>6,908</b>	<b>8,223</b>	<b>8,258</b>	<b>7,975</b>	<b>8,079</b>	<b>8,365</b>	<b>9,472</b>	<b>9,119</b>	<b>9,239</b>	<b>9,296</b>	<b>101,248</b>
Probate	4,537	5,080	4,173	5,071	5,065	5,017	4,831	5,312	6,024	5,649	5,720	5,872	62,351
Baker Act	2,137	2,174	1,806	2,030	2,041	1,918	2,121	2,092	2,223	2,203	2,301	2,181	25,227
Substance Abuse	726	728	570	683	719	607	711	572	735	771	758	782	8,362
Other Social Cases	465	467	359	439	433	433	416	389	490	496	460	461	5,308
<b>Trust &amp; Guardianship</b>	<b>682</b>	<b>696</b>	<b>578</b>	<b>683</b>	<b>667</b>	<b>644</b>	<b>640</b>	<b>683</b>	<b>768</b>	<b>768</b>	<b>702</b>	<b>746</b>	<b>8,257</b>
Guardianship	614	619	514	607	614	570	568	623	635	658	617	644	7,283
Trust	68	77	64	76	53	74	72	60	133	110	85	102	974
<b>Total</b>	<b>8,547</b>	<b>9,145</b>	<b>7,486</b>	<b>8,906</b>	<b>8,925</b>	<b>8,619</b>	<b>8,719</b>	<b>9,048</b>	<b>10,240</b>	<b>9,887</b>	<b>9,941</b>	<b>10,042</b>	<b>109,505</b>

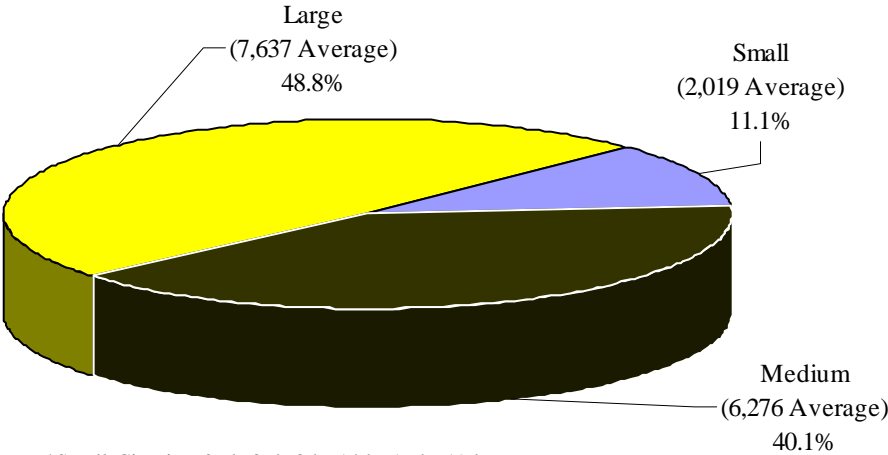
5

**CIRCUIT PROBATE FILINGS**  
*by Category*  
**FY 2004-05**



5

**CIRCUIT PROBATE FILINGS**  
*by Circuit Size\**  
**FY 2004-05**



\*Small Circuits- 2nd, 3rd, 8th, 14th, 16th, 19th;  
Medium Circuits- 1st, 5th, 7th, 10th, 12th, 18th, 20th;  
Large Circuits- 4th, 6th, 9th, 11th, 13th, 15th, 17th (as defined in the Glossary).

**CIRCUIT PROBATE FILINGS**  
*by Case Type and Circuit*  
**FY 2004-05**

Circuit	Probate	Baker Act	Substance Abuse	Other Social Cases	Guardianship	Trust	Total
1	1,963	1,466	295	102	217	21	4,064
2	982	1,054	109	383	198	25	2,751
3	662	126	205	30	76	5	1,104
4	2,455	1,120	1,271	186	429	0	5,461
5	5,280	1,095	64	330	415	34	7,218
6	5,709	3,091	159	461	533	103	10,056
7	3,464	1,246	605	138	293	23	5,769
8	790	897	155	162	83	11	2,098
9	2,488	1,649	673	275	370	55	5,510
10	2,688	1,204	281	182	305	21	4,681
11	4,342	3,302	587	904	925	73	10,133
12	3,368	1,182	139	330	598	133	5,750
13	2,331	1,745	424	416	441	56	5,413
14	1,041	508	200	57	118	0	1,924
15	4,885	977	1,210	285	522	203	8,082
16	404	48	31	10	38	1	532
17	5,191	1,857	620	450	583	100	8,801
18	2,998	957	842	201	416	33	5,447
19	2,298	869	232	96	183	28	3,706
20	9,012	834	260	310	540	49	11,005
<b>Total</b>	<b>62,351</b>	<b>25,227</b>	<b>8,362</b>	<b>5,308</b>	<b>7,283</b>	<b>974</b>	<b>109,505</b>

5

**CIRCUIT PROBATE FILINGS**  
**by Category and Circuit/County**  
**FY 2004-05**

Circuit/County	Probate & Other Probate	Trust & Guardianship	Total
<b>Circuit 1</b>	<b>3,826</b>	<b>238</b>	<b>4,064</b>
Escambia	1,911	115	2,026
Okaloosa	1,110	70	1,180
Santa Rosa	528	38	566
Walton	277	15	292
<b>Circuit 2</b>	<b>2,528</b>	<b>223</b>	<b>2,751</b>
Franklin	94	3	97
Gadsden	465	87	552
Jefferson	75	2	77
Leon	1,723	116	1,839
Liberty	33	0	33
Wakulla	138	15	153
<b>Circuit 3</b>	<b>1,023</b>	<b>81</b>	<b>1,104</b>
Columbia	322	25	347
Dixie	109	1	110
Hamilton	57	12	69
Lafayette	48	5	53
Madison	107	7	114
Suwannee	213	27	240
Taylor	167	4	171
<b>Circuit 4</b>	<b>5,032</b>	<b>429</b>	<b>5,461</b>
Clay	354	67	421
Duval	4,446	348	4,794
Nassau	232	14	246

**CIRCUIT PROBATE FILINGS, Continued**  
**by Category and Circuit/County**  
**FY 2004-05**

Circuit/County	Probate & Other Probate	Trust & Guardianship	Total
<b>Circuit 5</b>	<b>6,769</b>	<b>449</b>	<b>7,218</b>
Citrus	1,353	82	1,435
Hernando	1,515	166	1,681
Lake	1,213	69	1,282
Marion	2,428	122	2,550
Sumter	260	10	270
<b>Circuit 6</b>	<b>9,420</b>	<b>636</b>	<b>10,056</b>
Pasco	3,043	155	3,198
Pinellas	6,377	481	6,858
<b>Circuit 7</b>	<b>5,453</b>	<b>316</b>	<b>5,769</b>
Flagler	506	48	554
Putnam	406	29	435
St. Johns	629	48	677
Volusia	3,912	191	4,103
<b>Circuit 8</b>	<b>2,004</b>	<b>94</b>	<b>2,098</b>
Alachua	1,372	61	1,433
Baker	189	17	206
Bradford	102	3	105
Gilchrist	55	2	57
Levy	234	9	243
Union	52	2	54
<b>Circuit 9</b>	<b>5,085</b>	<b>425</b>	<b>5,510</b>
Orange	4,183	328	4,511
Osceola	902	97	999

**CIRCUIT PROBATE FILINGS, Continued**  
**by Category and Circuit/County**  
**FY 2004-05**

Circuit/County	Probate & Other Probate	Trust & Guardianship	Total
<b>Circuit 10</b>	<b>4,355</b>	<b>326</b>	<b>4,681</b>
Hardee	118	9	127
Highlands	1,192	62	1,254
Polk	3,045	255	3,300
<b>Circuit 11</b>	<b>9,135</b>	<b>998</b>	<b>10,133</b>
Dade	9,135	998	10,133
<b>Circuit 12</b>	<b>5,019</b>	<b>731</b>	<b>5,750</b>
Desoto	133	18	151
Manatee	1,655	140	1,795
Sarasota	3,231	573	3,804
<b>Circuit 13</b>	<b>4,916</b>	<b>497</b>	<b>5,413</b>
Hillsborough	4,916	497	5,413
<b>Circuit 14</b>	<b>1,806</b>	<b>118</b>	<b>1,924</b>
Bay	1,088	56	1,144
Calhoun	58	6	64
Gulf	70	8	78
Holmes	92	8	100
Jackson	304	29	333
Washington	194	11	205
<b>Circuit 15</b>	<b>7,357</b>	<b>725</b>	<b>8,082</b>
Palm Beach	7,357	725	8,082
<b>Circuit 16</b>	<b>493</b>	<b>39</b>	<b>532</b>
Monroe	493	39	532

***CIRCUIT PROBATE FILINGS, Continued***  
***by Category and Circuit/County***  
***FY 2004-05***

<b>Circuit/County</b>	<b>Probate &amp; Other Probate</b>	<b>Trust &amp; Guardianship</b>	<b>Total</b>
<b>Circuit 17</b>	<b>8,118</b>	<b>683</b>	<b>8,801</b>
Broward	8,118	683	8,801
<b>Circuit 18</b>	<b>4,998</b>	<b>449</b>	<b>5,447</b>
Brevard	3,111	294	3,405
Seminole	1,887	155	2,042
<b>Circuit 19</b>	<b>3,495</b>	<b>211</b>	<b>3,706</b>
Indian River	930	55	985
Martin	788	55	843
Okeechobee	222	9	231
St. Lucie	1,555	92	1,647
<b>Circuit 20</b>	<b>10,416</b>	<b>589</b>	<b>11,005</b>
Charlotte	2,769	117	2,886
Collier	1,690	180	1,870
Glades	34	3	37
Hendry	162	22	184
Lee	5,761	267	6,028
<b>State Total</b>	<b>101,248</b>	<b>8,257</b>	<b>109,505</b>

5

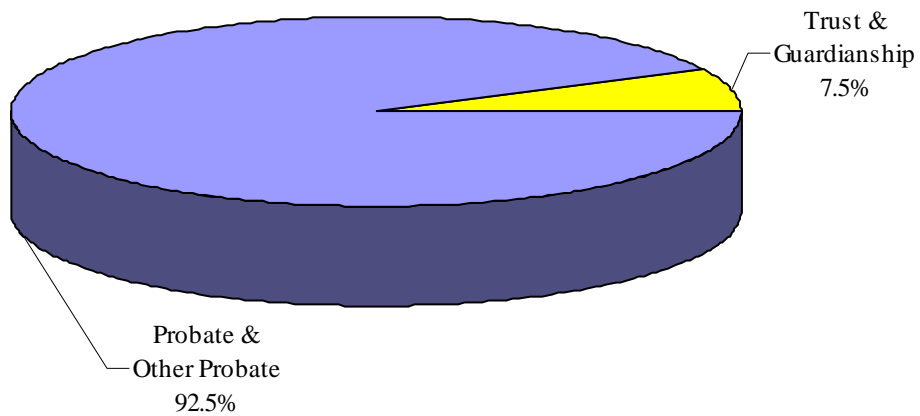


**Circuit Probate ❖ Dispositions**

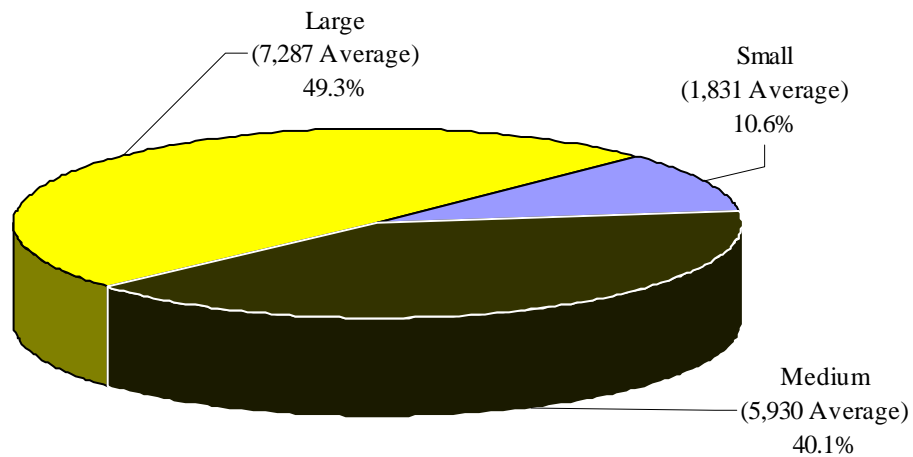
**CIRCUIT PROBATE DISPOSITIONS**  
**Statewide by Category, Case Type and Month**  
**FY 2004-05**

Category/ Case Type	Jul	Aug	Sep	Oct	Nov	Dec	Jan	Feb	Mar	Apr	May	Jun	Total
<b>Probate &amp; Other Probate</b>	<b>8,458</b>	<b>8,175</b>	<b>6,605</b>	<b>8,144</b>	<b>7,872</b>	<b>7,479</b>	<b>8,108</b>	<b>7,459</b>	<b>8,598</b>	<b>8,077</b>	<b>8,152</b>	<b>8,647</b>	<b>95,774</b>
Probate	5,333	5,170	4,060	5,207	5,025	4,756	5,127	4,709	5,431	5,087	5,023	5,326	60,254
Baker Act	2,024	1,922	1,695	1,882	1,808	1,756	1,952	1,872	2,086	1,871	2,084	2,155	23,107
Substance Abuse	705	644	510	648	619	588	645	549	612	700	643	712	7,575
Other Social Cases	396	439	340	407	420	379	384	329	469	419	402	454	4,838
<b>Trust &amp; Guardianship</b>	<b>724</b>	<b>670</b>	<b>564</b>	<b>724</b>	<b>558</b>	<b>620</b>	<b>662</b>	<b>605</b>	<b>709</b>	<b>686</b>	<b>580</b>	<b>632</b>	<b>7,734</b>
Guardianship	678	621	536	660	513	565	625	559	638	600	543	574	7,112
Trust	46	49	28	64	45	55	37	46	71	86	37	58	622
<b>Total</b>	<b>9,182</b>	<b>8,845</b>	<b>7,169</b>	<b>8,868</b>	<b>8,430</b>	<b>8,099</b>	<b>8,770</b>	<b>8,064</b>	<b>9,307</b>	<b>8,763</b>	<b>8,732</b>	<b>9,279</b>	<b>103,508</b>

**CIRCUIT PROBATE DISPOSITIONS**  
**by Category**  
**FY 2004-05**



**CIRCUIT PROBATE DISPOSITIONS**  
**by Circuit Size\***  
**FY 2004-05**



\*Small Circuits- 2nd, 3rd, 8th, 14th, 16th, 19th;  
Medium Circuits- 1st, 5th, 7th, 10th, 12th, 18th, 20th;  
Large Circuits- 4th, 6th, 9th, 11th, 13th, 15th, 17th (as defined in the Glossary).

**CIRCUIT PROBATE DISPOSITIONS**  
**by Case Type and Circuit**  
**FY 2004-05**

Circuit	Probate	Baker Act	Substance Abuse	Other Social Cases	Guardianship	Trust	Total
1	1,908	1,313	276	113	294	18	3,922
2	810	1,023	80	337	119	17	2,386
3	600	115	205	9	46	0	975
4	2,474	1,122	947	184	383	0	5,110
5	5,243	1,170	62	354	392	29	7,250
6	5,861	2,931	153	400	492	59	9,896
7	3,577	1,214	600	132	287	13	5,823
8	731	928	163	149	75	7	2,053
9	2,355	1,650	656	263	362	30	5,316
10	2,628	461	310	170	272	18	3,859
11	4,413	3,176	504	797	1,148	61	10,099
12	3,565	638	127	281	505	91	5,207
13	2,595	1,737	427	423	498	52	5,732
14	930	496	195	41	67	0	1,729
15	4,935	812	1,072	264	424	121	7,628
16	336	49	29	21	43	0	478
17	3,851	1,791	500	361	704	24	7,231
18	3,154	864	819	184	404	25	5,450
19	2,050	820	228	76	170	19	3,363
20	8,238	797	222	279	427	38	10,001
<b>Total</b>	<b>60,254</b>	<b>23,107</b>	<b>7,575</b>	<b>4,838</b>	<b>7,112</b>	<b>622</b>	<b>103,508</b>

**CIRCUIT PROBATE DISPOSITIONS**  
*by Category and Circuit/County*  
**FY 2004-05**

Circuit/County	Probate & Other Probate	Trust & Guardianship	Total
<b>Circuit 1</b>	<b>3,610</b>	<b>312</b>	<b>3,922</b>
Escambia	1,925	120	2,045
Okaloosa	950	137	1,087
Santa Rosa	531	41	572
Walton	204	14	218
<b>Circuit 2</b>	<b>2,250</b>	<b>136</b>	<b>2,386</b>
Franklin	59	0	59
Gadsden	429	39	468
Jefferson	33	0	33
Leon	1,657	82	1,739
Liberty	22	0	22
Wakulla	50	15	65
<b>Circuit 3</b>	<b>929</b>	<b>46</b>	<b>975</b>
Columbia	318	28	346
Dixie	78	2	80
Hamilton	21	1	22
Lafayette	32	1	33
Madison	93	5	98
Suwannee	221	8	229
Taylor	166	1	167
<b>Circuit 4</b>	<b>4,727</b>	<b>383</b>	<b>5,110</b>
Clay	316	107	423
Duval	4,127	262	4,389
Nassau	284	14	298

5

**CIRCUIT PROBATE DISPOSITIONS, Continued**  
**by Category and Circuit/County**  
**FY 2004-05**

Circuit/County	Probate & Other Probate	Trust & Guardianship	Total
<b>Circuit 5</b>	<b>6,829</b>	<b>421</b>	<b>7,250</b>
Citrus	1,314	79	1,393
Hernando	1,653	153	1,806
Lake	1,216	61	1,277
Marion	2,403	123	2,526
Sumter	243	5	248
<b>Circuit 6</b>	<b>9,345</b>	<b>551</b>	<b>9,896</b>
Pasco	2,940	150	3,090
Pinellas	6,405	401	6,806
<b>Circuit 7</b>	<b>5,523</b>	<b>300</b>	<b>5,823</b>
Flagler	557	21	578
Putnam	379	21	400
St. Johns	637	59	696
Volusia	3,950	199	4,149
<b>Circuit 8</b>	<b>1,971</b>	<b>82</b>	<b>2,053</b>
Alachua	1,378	58	1,436
Baker	184	6	190
Bradford	100	10	110
Gilchrist	44	1	45
Levy	204	6	210
Union	61	1	62
<b>Circuit 9</b>	<b>4,924</b>	<b>392</b>	<b>5,316</b>
Orange	4,054	300	4,354
Osceola	870	92	962

**CIRCUIT PROBATE DISPOSITIONS, Continued**  
**by Category and Circuit/County**  
**FY 2004-05**

Circuit/County	Probate & Other Probate	Trust & Guardianship	Total
<b>Circuit 10</b>	<b>3,569</b>	<b>290</b>	<b>3,859</b>
Hardee	107	14	121
Highlands	1,188	72	1,260
Polk	2,274	204	2,478
<b>Circuit 11</b>	<b>8,890</b>	<b>1,209</b>	<b>10,099</b>
Dade	8,890	1,209	10,099
<b>Circuit 12</b>	<b>4,611</b>	<b>596</b>	<b>5,207</b>
Desoto	209	79	288
Manatee	1,679	138	1,817
Sarasota	2,723	379	3,102
<b>Circuit 13</b>	<b>5,182</b>	<b>550</b>	<b>5,732</b>
Hillsborough	5,182	550	5,732
<b>Circuit 14</b>	<b>1,662</b>	<b>67</b>	<b>1,729</b>
Bay	1,000	13	1,013
Calhoun	39	1	40
Gulf	52	33	85
Holmes	95	2	97
Jackson	281	15	296
Washington	195	3	198
<b>Circuit 15</b>	<b>7,083</b>	<b>545</b>	<b>7,628</b>
Palm Beach	7,083	545	7,628
<b>Circuit 16</b>	<b>435</b>	<b>43</b>	<b>478</b>
Monroe	435	43	478

5

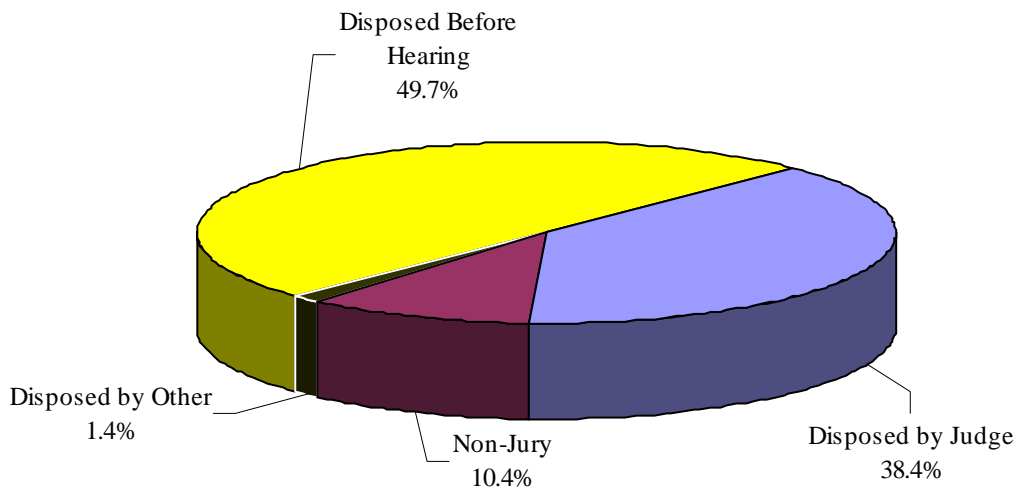
**CIRCUIT PROBATE DISPOSITIONS, Continued**  
**by Category and Circuit/County**  
**FY 2004-05**

<b>Circuit/County</b>	<b>Probate &amp; Other Probate</b>	<b>Trust &amp; Guardianship</b>	<b>Total</b>
<b>Circuit 17</b>	<b>6,503</b>	<b>728</b>	<b>7,231</b>
Broward	6,503	728	7,231
<b>Circuit 18</b>	<b>5,021</b>	<b>429</b>	<b>5,450</b>
Brevard	3,229	285	3,514
Seminole	1,792	144	1,936
<b>Circuit 19</b>	<b>3,174</b>	<b>189</b>	<b>3,363</b>
Indian River	927	52	979
Martin	620	41	661
Okeechobee	216	4	220
St. Lucie	1,411	92	1,503
<b>Circuit 20</b>	<b>9,536</b>	<b>465</b>	<b>10,001</b>
Charlotte	2,657	93	2,750
Collier	1,700	157	1,857
Glades	25	3	28
Hendry	150	22	172
Lee	5,004	190	5,194
<b>State Total</b>	<b>95,774</b>	<b>7,734</b>	<b>103,508</b>

**CIRCUIT PROBATE DISPOSITIONS**  
*Statewide by Case Type and Disposition Type*  
**FY 2004-05**

Disposition Type	Probate	Baker Act	Substance Abuse	Other Social Cases	Guardianship	Trust	Total
Disposed Before Hearing	34,406	12,524	2,396	897	924	317	51,464
Disposed by Judge (No Trial)	25,217	5,231	3,306	1,905	3,839	232	39,730
Disposed by Non-Jury	340	4,747	1,738	1,807	2,173	10	10,815
Disposed by Other	291	605	135	229	176	63	1,499
<b>Total</b>	<b>60,254</b>	<b>23,107</b>	<b>7,575</b>	<b>4,838</b>	<b>7,112</b>	<b>622</b>	<b>103,508</b>

**CIRCUIT PROBATE DISPOSITIONS**  
*by Disposition Type*  
**FY 2004-05**





**Circuit Probate** ❖ **Special Proceedings**

The Circuit Probate division also involves special proceedings in the form of reopenings. **These data are provided by the 67 clerks of court. However, special proceedings data are not audited for accuracy by the OSCA.**

**Reopening** - A reopening occurs when a case that has previously been reported as disposed is resubmitted to the court through a motion or petition.

**CIRCUIT PROBATE SPECIAL PROCEEDINGS**  
**by Circuit**  
**FY 2004-05**

Circuit	Reopenings
First (Pensacola)	3,290
Second (Tallahassee)	512
Third (Lake City)	65
Fourth (Jacksonville)	1,705
Fifth (Tavares)	2,633
Sixth (Clearwater)	9,399
Seventh (Daytona Beach)	2,339
Eighth (Gainesville)	613
Ninth (Orlando)	5,025
Tenth (Bartow)	1,879
Eleventh (Miami)	28,796
Twelfth (Sarasota)	508
Thirteenth (Tampa)	4,120
Fourteenth (Panama City)	165
Fifteenth (West Palm Beach)	6,042
Sixteenth (Key West)	251
Seventeenth (Ft. Lauderdale)	2,051
Eighteenth (Sanford)	2,796
Nineteenth (Ft. Pierce)	3,061
Twentieth (Ft. Myers)	3,693
<b>Total</b>	<b>78,943</b>

-This page intentionally left blank-