

Circuit Criminal ♦ Overview

The Circuit Criminal division includes the following five categories of felony offenses: capital murder, violent crimes, crimes against persons, crimes against property, and drug crimes. Within these categories are the following case types:

Capital Murder - capital murder offenses

Violent Crimes - non-capital murder (examples of non-capital murder cases include: negligent manslaughter, vehicular manslaughter, unpremeditated murder, commission of a felony which causes death, aggravated manslaughter, and other similar offenses) and sexual offenses

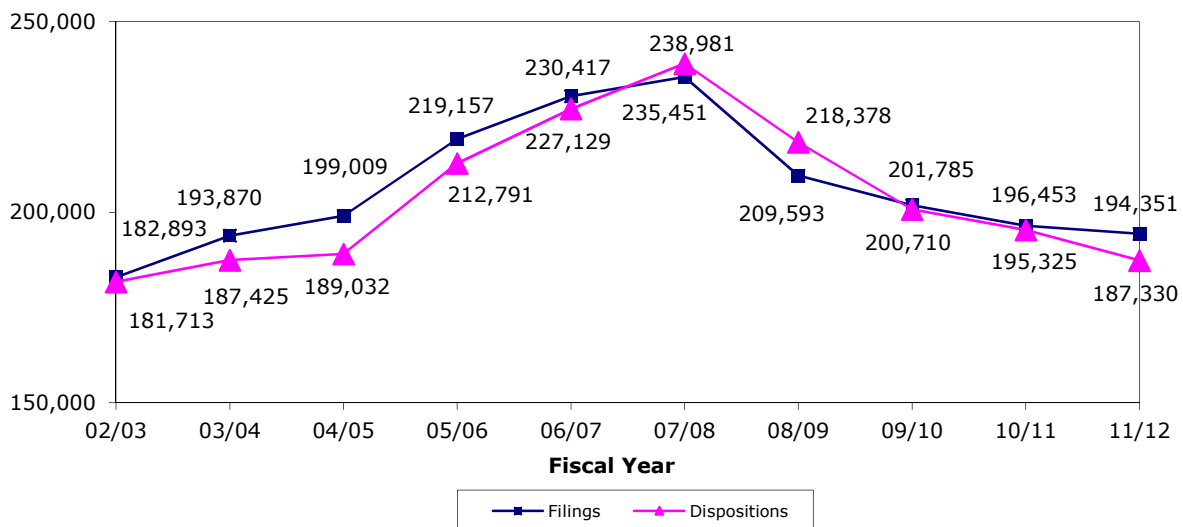
Crimes Against Persons - robbery and other crimes against persons

Crimes Against Property - burglary, theft, forgery, fraud, worthless checks, other crimes against property, and other felony offenses (examples of other felony offenses are: weapon charges, resisting arrest, contempt of court, failure to appear, accessory after the fact, and book-making)

Drug Crimes - drug offenses

In the Circuit Criminal division, *Filings* correspond to each defendant against whom an information or indictment is filed. *Dispositions* correspond to each defendant for whom a final judicial decision is rendered terminating a criminal proceeding by an acquittal, a dismissal, or a judgment stating the specific sentence (in the case of a conviction). *Charges* are defined as each individual offense with which a defendant is accused. These charges or counts are tied directly to each filing. *Jury Trials* are defined as trials in which a group of citizens is impaneled, selected and sworn to determine the issues of fact in a case.

CIRCUIT CRIMINAL FILINGS AND DISPOSITIONS* FY 2002-03 to FY 2011-12



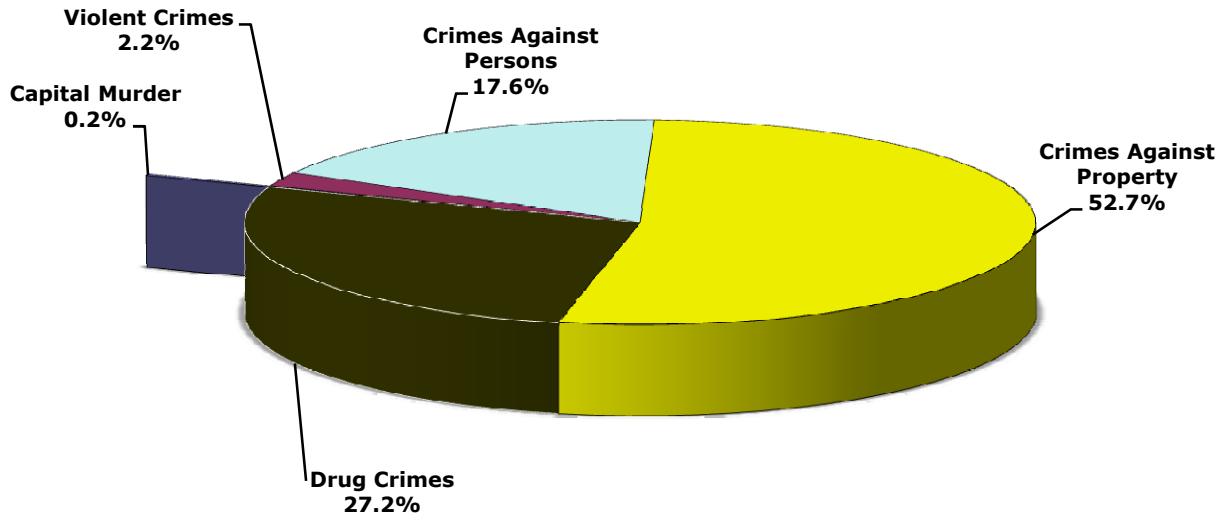
*For fiscal year 2011-12, the decrease in circuit criminal filings occurred in capital murder, non-capital murder, sexual offenses, robbery, burglary, theft, forgery, fraud, worthless checks, drugs, and other felony case types.

CIRCUIT CRIMINAL FILINGS
Statewide by Category/Case Type and Month
FY 2011-12

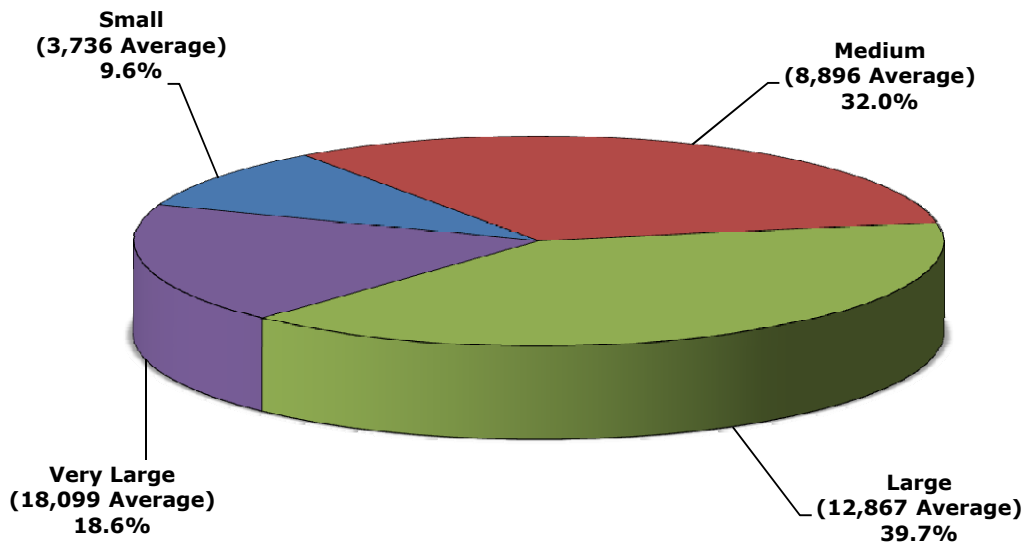
Category/ Case Type	Jul	Aug	Sep	Oct	Nov	Dec	Jan	Feb	Mar	Apr	May	Jun	Total
A. Capital Murder	35	38	47	28	26	19	46	38	13	24	49	31	394
1. Capital Murder	35	38	47	28	26	19	46	38	13	24	49	31	394
B. Violent Crimes	350	362	360	313	322	327	342	382	419	360	427	367	4,331
1. Non-Capital Murder	101	120	120	88	108	104	121	87	106	93	108	94	1,250
2. Sexual Offenses	249	242	240	225	214	223	221	295	313	267	319	273	3,081
C. Crimes Against Persons	2,850	3,054	2,852	2,863	2,593	2,683	3,028	2,875	2,782	2,763	2,995	2,888	34,226
1. Robbery	418	488	531	485	450	505	566	432	431	451	532	445	5,734
2. Other Crimes Against Persons	2,432	2,566	2,321	2,378	2,143	2,178	2,462	2,443	2,351	2,312	2,463	2,443	28,492
D. Crimes Against Property	8,267	9,481	8,735	8,680	7,896	8,159	8,802	8,615	8,370	8,269	8,745	8,466	102,485
1. Burglary	2,043	2,207	2,077	2,060	1,926	1,935	1,994	1,999	1,806	1,881	2,045	1,908	23,881
2. Theft, Forgery, Fraud	3,725	4,479	4,090	4,065	3,704	3,902	4,259	4,084	3,834	3,835	4,098	3,918	47,993
3. Worthless Checks	113	133	98	126	105	72	193	115	135	104	108	110	1,412
4. Other Crimes Against Property	130	161	134	146	124	116	141	138	167	170	169	149	1,745
5. Other	2,256	2,501	2,336	2,283	2,037	2,134	2,215	2,279	2,428	2,279	2,325	2,381	27,454
E. Drug Crimes	4,448	4,729	4,638	4,264	4,062	3,985	4,500	4,438	4,606	4,478	4,526	4,241	52,915
1. Drugs	4,448	4,729	4,638	4,264	4,062	3,985	4,500	4,438	4,606	4,478	4,526	4,241	52,915
Total	15,950	17,664	16,632	16,148	14,899	15,173	16,718	16,348	16,190	15,894	16,742	15,993	194,351

Circuit Criminal ♦ Filings

**CIRCUIT CRIMINAL FILINGS
by Category
FY 2011-12**



**CIRCUIT CRIMINAL FILINGS
by Circuit Size*
FY 2011-12**



*Small Circuits - 2nd, 3rd, 8th, 14th, 16th;
 Medium Circuits - 1st, 5th, 7th, 10th, 12th, 18th, 19th;
 Large Circuits - 4th, 6th, 9th, 13th, 15th, 20th; and
 Very Large Circuits - 11th, 17th (as defined in the Glossary).

CIRCUIT CRIMINAL FILINGS
by Circuit and Case Type
FY 2011-12

Circuit	Capital Murder	Non-Capital Murder	Sexual Offenses	Robbery	Other Crimes Against Persons	Burglary	Theft Forgery Fraud	Worthless Checks	Other Crimes Against Property	Drugs	Other	Total
1	24	31	225	274	1,994	1,320	2,903	76	96	2,257	1,498	10,698
2	14	41	108	160	976	669	1,263	110	54	881	583	4,859
3	4	11	41	25	401	305	589	22	23	536	521	2,478
4	26	119	284	396	1,393	1,561	3,415	22	88	3,004	1,551	11,859
5	15	46	221	224	1,676	1,229	2,868	69	84	2,686	1,428	10,546
6	35	62	179	301	2,051	1,612	4,932	212	156	5,503	2,474	17,517
7	17	46	156	290	1,407	1,336	2,695	160	138	2,410	1,036	9,691
8	11	26	80	127	789	543	1,283	33	85	1,240	634	4,851
9	54	210	352	653	2,619	2,097	3,525	129	134	4,676	2,489	16,938
10	15	50	188	221	2,071	1,506	1,884	166	64	2,577	1,261	10,003
11	33	234	231	792	2,732	2,142	4,217	61	101	5,771	2,904	19,218
12	8	49	93	175	787	716	2,038	29	56	1,899	863	6,713
13	22	57	121	441	1,897	1,761	3,484	95	110	3,519	1,303	12,810
14	2	29	85	75	736	524	1,042	10	43	1,400	1,302	5,248
15	30	73	143	420	1,264	1,334	2,274	46	28	2,802	756	9,170
16	2	6	13	37	236	102	250	22	21	381	174	1,244
17	40	63	219	564	2,413	2,113	3,416	11	123	4,692	3,325	16,979
18	19	27	97	210	1,172	1,203	2,188	99	206	2,386	1,342	8,949
19	21	20	101	104	792	596	1,492	34	48	1,708	758	5,674
20	2	50	144	245	1,086	1,212	2,235	6	87	2,587	1,252	8,906
Total	394	1,250	3,081	5,734	28,492	23,881	47,993	1,412	1,745	52,915	27,454	194,351

Circuit Criminal ◆ Filings

CIRCUIT CRIMINAL FILINGS
by Circuit/County and Category
FY 2011-12

Circuit/County	Capital Murder	Violent Crimes	Crimes Against Persons	Crimes Against Property	Drug Crimes	Total
Circuit 1	24	256	2,268	5,893	2,257	10,698
Escambia	13	108	1,289	2,954	1,162	5,526
Okaloosa	9	48	493	1,371	470	2,391
Santa Rosa	0	54	311	1,071	348	1,784
Walton	2	46	175	497	277	997
Circuit 2	14	149	1,136	2,679	881	4,859
Franklin	0	5	43	114	111	273
Gadsden	4	29	196	277	163	669
Jefferson	0	5	55	111	87	258
Leon	10	90	754	1,915	432	3,201
Liberty	0	5	16	59	27	107
Wakulla	0	15	72	203	61	351
Circuit 3	4	52	426	1,460	536	2,478
Columbia	1	14	150	578	104	847
Dixie	0	8	28	124	23	183
Hamilton	0	7	18	92	25	142
Lafayette	0	1	6	26	7	40
Madison	2	3	70	158	62	295
Suwannee	1	11	107	304	263	686
Taylor	0	8	47	178	52	285
Circuit 4	26	403	1,789	6,637	3,004	11,859
Clay	3	74	418	1,635	541	2,671
Duval	23	303	1,280	4,709	2,253	8,568
Nassau	0	26	91	293	210	620

CIRCUIT CRIMINAL FILINGS, Continued
by Circuit/County and Category
FY 2011-12

Circuit/County	Capital Murder	Violent Crimes	Crimes Against Persons	Crimes Against Property	Drug Crimes	Total
Circuit 5	15	267	1,900	5,678	2,686	10,546
Citrus	0	55	201	564	241	1,061
Hernando	6	33	337	1,262	362	2,000
Lake	4	47	601	1,414	806	2,872
Marion	5	112	652	2,026	997	3,792
Sumter	0	20	109	412	280	821
Circuit 6	35	241	2,352	9,386	5,503	17,517
Pasco	15	77	538	2,757	1,317	4,704
Pinellas	20	164	1,814	6,629	4,186	12,813
Circuit 7	17	202	1,697	5,365	2,410	9,691
Flagler	0	9	183	343	146	681
Putnam	2	38	217	780	388	1,425
St. Johns	6	20	231	725	244	1,226
Volusia	9	135	1,066	3,517	1,632	6,359
Circuit 8	11	106	916	2,578	1,240	4,851
Alachua	9	73	563	1,394	761	2,800
Baker	0	6	85	200	110	401
Bradford	2	9	108	431	225	775
Gilchrist	0	5	43	125	12	185
Levy	0	5	75	304	107	491
Union	0	8	42	124	25	199
Circuit 9	54	562	3,272	8,374	4,676	16,938
Orange	42	441	2,670	7,137	3,574	13,864
Osceola	12	121	602	1,237	1,102	3,074

Circuit Criminal ◆ Filings

CIRCUIT CRIMINAL FILINGS, Continued
by Circuit/County and Category
FY 2011-12

Circuit/County	Capital Murder	Violent Crimes	Crimes Against Persons	Crimes Against Property	Drug Crimes	Total
Circuit 10	15	238	2,292	4,881	2,577	10,003
Hardee	0	14	56	170	76	316
Highlands	0	41	150	587	157	935
Polk	15	183	2,086	4,124	2,344	8,752
Circuit 11	33	465	3,524	9,425	5,771	19,218
Miami-Dade	33	465	3,524	9,425	5,771	19,218
Circuit 12	8	142	962	3,702	1,899	6,713
Desoto	2	17	90	204	176	489
Manatee	4	53	389	1,551	697	2,694
Sarasota	2	72	483	1,947	1,026	3,530
Circuit 13	22	178	2,338	6,753	3,519	12,810
Hillsborough	22	178	2,338	6,753	3,519	12,810
Circuit 14	2	114	811	2,921	1,400	5,248
Bay	2	77	427	2,014	732	3,252
Calhoun	0	3	55	78	129	265
Gulf	0	5	22	190	59	276
Holmes	0	10	65	165	90	330
Jackson	0	12	187	331	226	756
Washington	0	7	55	143	164	369
Circuit 15	30	216	1,684	4,438	2,802	9,170
Palm Beach	30	216	1,684	4,438	2,802	9,170
Circuit 16	2	19	273	569	381	1,244
Monroe	2	19	273	569	381	1,244

CIRCUIT CRIMINAL FILINGS, Continued
by Circuit/County and Category
FY 2011-12

Circuit/County	Capital Murder	Violent Crimes	Crimes Against Persons	Crimes Against Property	Drug Crimes	Total
Circuit 17	40	282	2,977	8,988	4,692	16,979
Broward	40	282	2,977	8,988	4,692	16,979
Circuit 18	19	124	1,382	5,038	2,386	8,949
Brevard	11	88	884	3,405	1,471	5,859
Seminole	8	36	498	1,633	915	3,090
Circuit 19	21	121	896	2,928	1,708	5,674
Indian River	3	19	168	645	245	1,080
Martin	0	29	133	626	445	1,233
Okeechobee	0	18	80	363	169	630
St. Lucie	18	55	515	1,294	849	2,731
Circuit 20	2	194	1,331	4,792	2,587	8,906
Charlotte	0	33	264	974	628	1,899
Collier	0	43	219	815	403	1,480
Glades	0	2	25	114	17	158
Hendry	0	13	94	264	157	528
Lee	2	103	729	2,625	1,382	4,841
Total	394	4,331	34,226	102,485	52,915	194,351

Circuit Criminal ♦ Filings

CIRCUIT CRIMINAL CHARGES
by Circuit/County
FY 2011-12

Circuit/County	Total Filings (Defendants)	Total Counts	Number of Charges per Defendants
Circuit 1	10,698	22,773	2.1
Escambia	5,526	12,312	2.2
Okaloosa	2,391	4,372	1.8
Santa Rosa	1,784	4,184	2.3
Walton	997	1,905	1.9
Circuit 2	4,859	11,038	2.3
Franklin	273	455	1.7
Gadsden	669	1,377	2.1
Jefferson	258	502	1.9
Leon	3,201	7,722	2.4
Liberty	107	197	1.8
Wakulla	351	785	2.2
Circuit 3	2,478	5,055	2.0
Columbia	847	1,696	2.0
Dixie	183	337	1.8
Hamilton	142	317	2.2
Lafayette	40	78	2.0
Madison	295	574	1.9
Suwannee	686	1,498	2.2
Taylor	285	555	1.9
Circuit 4	11,859	21,598	1.8
Clay	2,671	4,375	1.6
Duval	8,568	16,194	1.9
Nassau	620	1,029	1.7

CIRCUIT CRIMINAL CHARGES, Continued
by Circuit/County
FY 2011-12

Circuit/County	Total Filings (Defendants)	Total Counts	Number of Charges per Defendants
Circuit 5	10,546	22,707	2.2
Citrus	1,061	2,307	2.2
Hernando	2,000	3,908	2.0
Lake	2,872	7,063	2.5
Marion	3,792	7,647	2.0
Sumter	821	1,782	2.2
Circuit 6	17,517	29,924	1.7
Pasco	4,704	7,908	1.7
Pinellas	12,813	22,016	1.7
Circuit 7	9,691	16,290	1.7
Flagler	681	1,349	2.0
Putnam	1,425	2,575	1.8
St. Johns	1,226	1,932	1.6
Volusia	6,359	10,434	1.6
Circuit 8	4,851	10,269	2.1
Alachua	2,800	6,234	2.2
Baker	401	872	2.2
Bradford	775	1,425	1.8
Gilchrist	185	335	1.8
Levy	491	1,025	2.1
Union	199	378	1.9
Circuit 9	16,938	38,228	2.3
Orange	13,864	31,143	2.2
Osceola	3,074	7,085	2.3

Circuit Criminal ◆ Filings

CIRCUIT CRIMINAL CHARGES, Continued
by Circuit/County
FY 2011-12

Circuit/County	Total Filings (Defendants)	Total Counts	Number of Charges per Defendants
Circuit 10	10,003	27,600	2.8
Hardee	316	666	2.1
Highlands	935	2,684	2.9
Polk	8,752	24,250	2.8
Circuit 11	19,218	40,589	2.1
Miami-Dade	19,218	40,589	2.1
Circuit 12	6,713	13,378	2.0
Desoto	489	746	1.5
Manatee	2,694	5,233	1.9
Sarasota	3,530	7,399	2.1
Circuit 13	12,810	28,088	2.2
Hillsborough	12,810	28,088	2.2
Circuit 14	5,248	9,540	1.8
Bay	3,252	5,833	1.8
Calhoun	265	501	1.9
Gulf	276	449	1.6
Holmes	330	665	2.0
Jackson	756	1,367	1.8
Washington	369	725	2.0
Circuit 15	9,170	19,113	2.1
Palm Beach	9,170	19,113	2.1
Circuit 16	1,244	2,681	2.2
Monroe	1,244	2,681	2.2

CIRCUIT CRIMINAL CHARGES, Continued
by Circuit/County
FY 2011-12

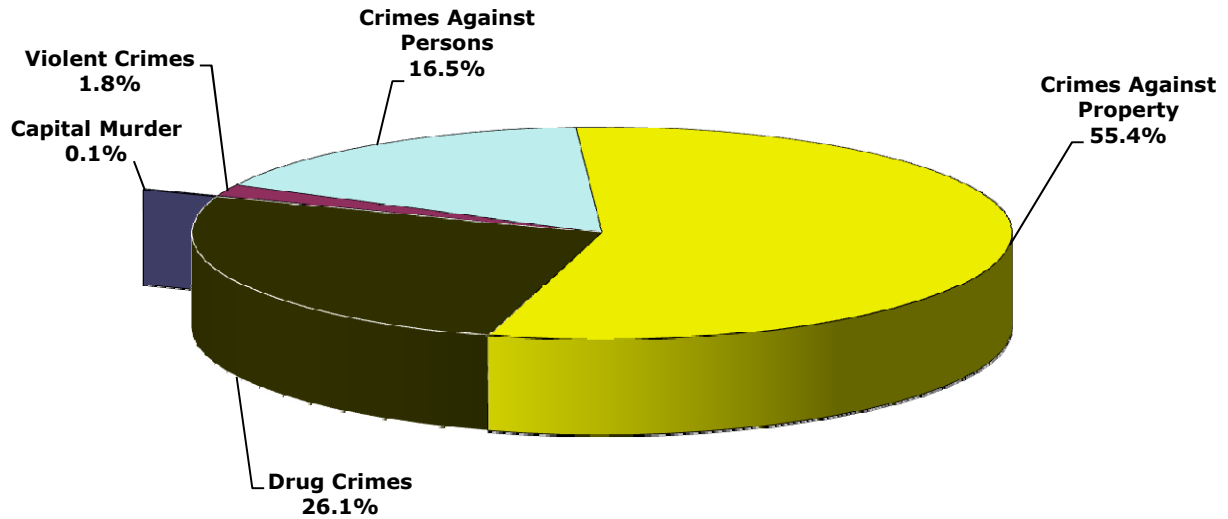
Circuit/County	Total Filings (Defendants)	Total Counts	Number of Charges per Defendants
Circuit 17	16,979	36,108	2.1
Broward	16,979	36,108	2.1
Circuit 18	8,949	20,001	2.2
Brevard	5,859	13,667	2.3
Seminole	3,090	6,334	2.0
Circuit 19	5,674	14,241	2.5
Indian River	1,080	2,525	2.3
Martin	1,233	3,114	2.5
Okeechobee	630	1,400	2.2
St. Lucie	2,731	7,202	2.6
Circuit 20	8,906	20,337	2.3
Charlotte	1,899	4,538	2.4
Collier	1,480	3,872	2.6
Glades	158	283	1.8
Hendry	528	1,163	2.2
Lee	4,841	10,481	2.2
Total	194,351	409,558	2.1

Circuit Criminal ♦ Dispositions

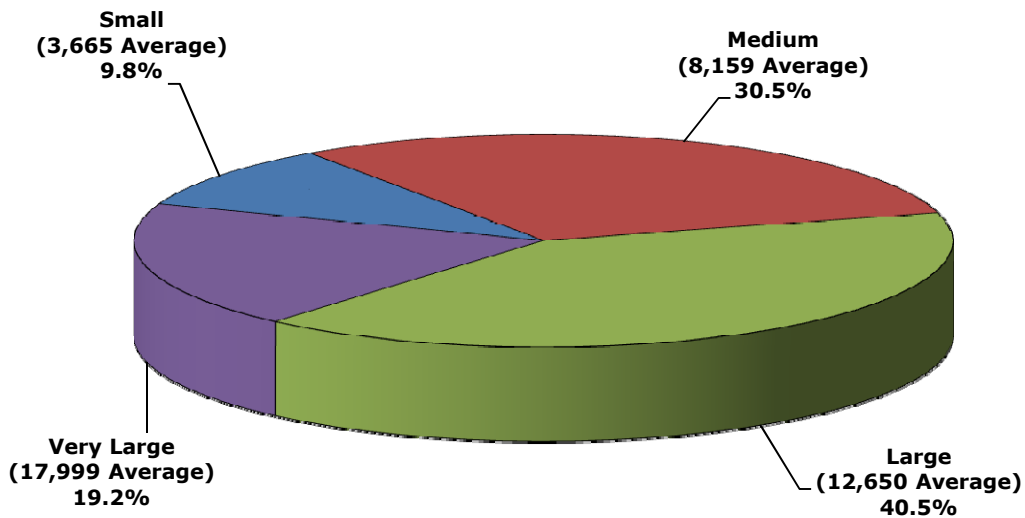
**CIRCUIT CRIMINAL DISPOSITIONS
Statewide by Category/Case Type and Month
FY 2011-12**

Category/ Case Type	Jul	Aug	Sep	Oct	Nov	Dec	Jan	Feb	Mar	Apr	May	Jun	Total
A. Capital Murder	22	22	25	16	18	18	22	15	28	18	22	16	242
1. Capital Murder	22	22	25	16	18	18	22	15	28	18	22	16	242
B. Violent Crimes	250	254	257	294	276	225	307	292	304	301	290	263	3,313
1. Non-Capital Murder	79	85	88	96	76	69	110	86	98	96	76	93	1,052
2. Sexual Offenses	171	169	169	198	200	156	197	206	206	205	214	170	2,261
C. Crimes Against Persons	2,374	2,626	2,529	2,623	2,556	2,122	2,727	2,746	2,732	2,699	2,706	2,555	30,995
1. Robbery	406	381	372	439	400	356	431	436	440	439	453	399	4,952
2. Other Crimes Against Persons	1,968	2,245	2,157	2,184	2,156	1,766	2,296	2,310	2,292	2,260	2,253	2,156	26,043
D. Crimes Against Property	7,884	9,060	9,007	8,808	8,453	7,201	8,985	9,283	9,034	8,665	9,117	8,371	103,868
1. Burglary	1,716	1,878	1,845	1,841	1,759	1,582	1,777	1,881	1,851	1,720	1,797	1,581	21,228
2. Theft, Forgery, Fraud	3,330	3,954	3,929	4,010	3,794	3,238	4,177	4,331	4,255	4,072	4,245	3,953	47,288
3. Worthless Checks	150	169	354	161	142	128	215	207	141	160	172	116	2,115
4. Other Crimes Against Property	145	156	146	155	156	147	154	164	159	156	203	153	1,894
5. Other	2,543	2,903	2,733	2,641	2,602	2,106	2,662	2,700	2,628	2,557	2,700	2,568	31,343
E. Drug Crimes	3,945	4,112	3,991	4,120	4,148	3,195	4,414	4,263	4,292	4,186	4,300	3,946	48,912
1. Drugs	3,945	4,112	3,991	4,120	4,148	3,195	4,414	4,263	4,292	4,186	4,300	3,946	48,912
Total	14,475	16,074	15,809	15,861	15,451	12,761	16,455	16,599	16,390	15,869	16,435	15,151	187,330

CIRCUIT CRIMINAL DISPOSITIONS
by Category
FY 2011-12



CIRCUIT CRIMINAL DISPOSITIONS
by Circuit Size*
FY 2011-12



*Small Circuits - 2nd, 3rd, 8th, 14th, 16th;
Medium Circuits - 1st, 5th, 7th, 10th, 12th, 18th, 19th;
Large Circuits - 4th, 6th, 9th, 13th, 15th, 20th; and
Very Large Circuits - 11th, 17th (as defined in the Glossary).

Circuit Criminal ♦ Dispositions

CIRCUIT CRIMINAL DISPOSITIONS
by Circuit and Case Type
FY 2011-12

Circuit	Capital Murder	Non-Capital Murder	Sexual Offenses	Robbery	Other Crimes Against Persons	Burglary	Theft Forgery Fraud	Worthless Checks	Other Crimes Against Property	Drugs	Other	Total
1	14	29	156	196	1,809	1,073	2,558	241	89	1,881	1,901	9,947
2	7	35	67	158	934	667	1,316	142	70	837	675	4,908
3	5	5	44	20	402	271	627	29	35	480	439	2,357
4	26	95	227	334	1,373	1,665	3,402	104	98	2,903	1,737	11,964
5	11	56	224	190	1,665	1,188	2,938	107	89	2,574	1,604	10,646
6	20	68	131	299	2,031	1,464	4,849	254	154	5,045	2,606	16,921
7	6	30	137	222	1,266	1,176	2,476	159	125	2,266	1,101	8,964
8	3	10	50	106	700	499	1,211	30	61	1,170	756	4,596
9	37	131	236	533	2,147	1,629	3,151	143	123	4,017	2,793	14,940
10	6	35	91	149	791	801	1,713	248	58	1,537	1,641	7,070
11	17	169	145	755	2,941	2,074	4,718	68	142	5,993	3,418	20,440
12	8	28	91	146	735	780	1,970	69	60	1,692	945	6,524
13	10	70	81	398	1,984	1,800	4,073	212	154	3,457	1,721	13,960
14	3	22	49	88	739	555	1,132	19	49	1,429	1,472	5,557
15	24	103	90	415	1,414	1,493	2,403	62	39	2,684	1,139	9,866
16	0	2	11	15	177	84	161	16	18	307	115	906
17	21	61	152	412	1,954	1,475	3,083	13	108	4,839	3,440	15,558
18	11	33	75	198	1,147	999	2,048	162	267	1,971	1,427	8,338
19	12	25	69	113	893	545	1,470	33	69	1,518	874	5,621
20	1	45	135	205	941	990	1,989	4	86	2,312	1,539	8,247
Total	242	1,052	2,261	4,952	26,043	21,228	47,288	2,115	1,894	48,912	31,343	187,330

**CIRCUIT CRIMINAL DISPOSITIONS
by Circuit/County and Category
FY 2011-12**

Circuit/County	Capital Murder	Violent Crimes	Crimes Against Persons	Crimes Against Property	Drug Crimes	Total
Circuit 1	14	185	2,005	5,862	1,881	9,947
Escambia	8	94	1,196	2,805	965	5,068
Okaloosa	3	25	415	1,401	398	2,242
Santa Rosa	1	48	267	1,047	292	1,655
Walton	2	18	127	609	226	982
Circuit 2	7	102	1,092	2,870	837	4,908
Franklin	0	3	47	146	110	306
Gadsden	3	14	181	247	147	592
Jefferson	0	5	43	124	50	222
Leon	4	63	738	2,100	453	3,358
Liberty	0	10	13	56	33	112
Wakulla	0	7	70	197	44	318
Circuit 3	5	49	422	1,401	480	2,357
Columbia	1	13	156	572	111	853
Dixie	0	7	21	96	24	148
Hamilton	0	1	23	76	32	132
Lafayette	0	2	9	32	14	57
Madison	0	6	60	163	53	282
Suwannee	4	15	104	285	191	599
Taylor	0	5	49	177	55	286
Circuit 4	26	322	1,707	7,006	2,903	11,964
Clay	0	68	415	1,835	591	2,909
Duval	24	230	1,153	4,772	2,086	8,265
Nassau	2	24	139	399	226	790

Circuit Criminal ♦ Dispositions

CIRCUIT CRIMINAL DISPOSITIONS, Continued
by Circuit/County and Category
FY 2011-12

Circuit/County	Capital Murder	Violent Crimes	Crimes Against Persons	Crimes Against Property	Drug Crimes	Total
Circuit 5	11	280	1,855	5,926	2,574	10,646
Citrus	0	46	186	762	227	1,221
Hernando	4	36	330	1,262	356	1,988
Lake	1	39	574	1,276	661	2,551
Marion	3	136	658	2,260	1,084	4,141
Sumter	3	23	107	366	246	745
Circuit 6	20	199	2,330	9,327	5,045	16,921
Pasco	3	53	472	2,556	1,136	4,220
Pinellas	17	146	1,858	6,771	3,909	12,701
Circuit 7	6	167	1,488	5,037	2,266	8,964
Flagler	0	43	177	391	206	817
Putnam	3	23	232	764	375	1,397
St. Johns	1	18	248	879	303	1,449
Volusia	2	83	831	3,003	1,382	5,301
Circuit 8	3	60	806	2,557	1,170	4,596
Alachua	3	38	532	1,400	793	2,766
Baker	0	3	58	223	97	381
Bradford	0	11	86	439	129	665
Gilchrist	0	3	27	86	14	130
Levy	0	3	70	306	114	493
Union	0	2	33	103	23	161
Circuit 9	37	367	2,680	7,839	4,017	14,940
Orange	21	279	2,161	6,495	3,064	12,020
Osceola	16	88	519	1,344	953	2,920

CIRCUIT CRIMINAL DISPOSITIONS, Continued
by Circuit/County and Category
FY 2011-12

Circuit/County	Capital Murder	Violent Crimes	Crimes Against Persons	Crimes Against Property	Drug Crimes	Total
Circuit 10	6	126	940	4,461	1,537	7,070
Hardee	0	3	48	140	75	266
Highlands	0	25	113	429	100	667
Polk	6	98	779	3,892	1,362	6,137
Circuit 11	17	314	3,696	10,420	5,993	20,440
Miami-Dade	17	314	3,696	10,420	5,993	20,440
Circuit 12	8	119	881	3,824	1,692	6,524
Desoto	0	15	77	156	150	398
Manatee	5	56	375	1,681	684	2,801
Sarasota	3	48	429	1,987	858	3,325
Circuit 13	10	151	2,382	7,960	3,457	13,960
Hillsborough	10	151	2,382	7,960	3,457	13,960
Circuit 14	3	71	827	3,227	1,429	5,557
Bay	1	49	441	2,321	803	3,615
Calhoun	0	3	47	82	102	234
Gulf	0	0	45	174	42	261
Holmes	1	3	65	163	99	331
Jackson	0	14	171	291	176	652
Washington	1	2	58	196	207	464
Circuit 15	24	193	1,829	5,136	2,684	9,866
Palm Beach	24	193	1,829	5,136	2,684	9,866
Circuit 16	0	13	192	394	307	906
Monroe	0	13	192	394	307	906

Circuit Criminal ♦ Dispositions

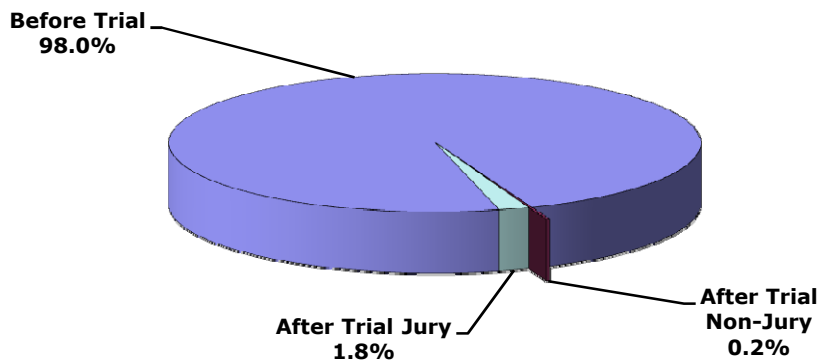
CIRCUIT CRIMINAL DISPOSITIONS, Continued
by Circuit/County and Category
FY 2011-12

Circuit/County	Capital Murder	Violent Crimes	Crimes Against Persons	Crimes Against Property	Drug Crimes	Total
Circuit 17	21	213	2,366	8,119	4,839	15,558
Broward	21	213	2,366	8,119	4,839	15,558
Circuit 18	11	108	1,345	4,903	1,971	8,338
Brevard	5	76	835	3,201	1,045	5,162
Seminole	6	32	510	1,702	926	3,176
Circuit 19	12	94	1,006	2,991	1,518	5,621
Indian River	2	22	118	640	252	1,034
Martin	0	23	122	635	330	1,110
Okeechobee	1	14	95	349	153	612
St. Lucie	9	35	671	1,367	783	2,865
Circuit 20	1	180	1,146	4,608	2,312	8,247
Charlotte	1	24	262	1,254	649	2,190
Collier	0	65	196	789	430	1,480
Glades	0	3	27	108	41	179
Hendry	0	10	87	279	113	489
Lee	0	78	574	2,178	1,079	3,909
Total	242	3,313	30,995	103,868	48,912	187,330

CIRCUIT CRIMINAL DISPOSITIONS
Statewide by Disposition Type and Case Type
FY 2011-12

Disposition Type	Capital Murder	Non-Capital Murder	Sexual Offenses	Robbery	Other Crimes Against Persons	Burglary	Theft Forgery Fraud	Worthless Checks	Other Crimes Against Property	Drugs	Other	Total
A. Before Trial	96	782	1,925	4,635	25,127	20,829	46,916	2,113	1,858	48,399	30,845	183,525
1. Speedy Trial	0	0	0	0	0	0	2	0	0	1	1	4
2. Dismissed	21	105	254	606	3,382	1,608	4,049	674	178	4,912	1,643	17,432
3. Transferred	0	3	39	63	1,344	446	724	12	137	918	4,905	8,591
4. Plea	55	630	1,480	3,768	17,549	17,608	36,037	779	1,344	38,658	23,175	141,083
5. Other*	20	44	152	198	2,852	1,167	6,104	648	199	3,910	1,121	16,415
B. After Trial Non-Jury	0	4	4	9	70	47	88	1	4	73	59	359
1. Acquittal/Dismissal	0	2	0	3	20	5	9	1	1	5	6	52
2. Plea	0	2	1	4	32	40	69	0	0	59	45	252
3. Conviction	0	0	3	2	18	2	10	0	3	9	8	55
C. After Trial Jury	146	266	332	308	846	352	284	1	32	440	439	3,446
1. Acquittal/Dismissal	16	66	105	78	294	89	102	0	8	116	102	976
2. Plea	8	11	16	23	82	33	30	0	6	53	65	327
3. Conviction	122	189	211	207	470	230	152	1	18	271	272	2,143
Total	242	1,052	2,261	4,952	26,043	21,228	47,288	2,115	1,894	48,912	31,343	187,330

CIRCUIT CRIMINAL DISPOSITIONS
by Disposition Type
FY 2011-12



*The disposition category "Other" is used to report cases disposed for: defendants placed on deferred prosecution or other pretrial diversion or probation program approved after an information or indictment is filed, defendants declared mentally or physically unable to stand trial, cases disposed upon estreatment of a bond, cases that are nolle prosequi (no further prosecution) for administrative reasons, or similar matters.

Circuit Criminal ♦ Dispositions**CIRCUIT CRIMINAL JURY TRIAL DISPOSITIONS**

by Circuit

FY 2011-12

Circuit (Circuit Seat)	Acquittals/Dismissals	Pleas	Convictions	Total
First (Pensacola)	58	28	131	217
Second (Tallahassee)	67	1	125	193
Third (Lake City)	6	0	16	22
Fourth (Jacksonville)	35	24	184	243
Fifth (Tavares)	31	7	70	108
Sixth (Clearwater)	46	8	143	197
Seventh (Daytona Beach)	21	8	86	115
Eighth (Gainesville)	15	20	60	95
Ninth (Orlando)	218	12	203	433
Tenth (Bartow)	41	6	105	152
Eleventh (Miami)	95	67	183	345
Twelfth (Sarasota)	26	9	80	115
Thirteenth (Tampa)	49	40	150	239
Fourteenth (Panama City)	15	5	34	54
Fifteenth (West Palm Beach)	56	18	115	189
Sixteenth (Key West)	5	9	9	23
Seventeenth (Ft. Lauderdale)	101	23	138	262
Eighteenth (Sanford)	35	27	98	160
Nineteenth (Ft. Pierce)	22	9	97	128
Twentieth (Ft. Myers)	34	6	116	156
Total	976	327	2,143	3,446

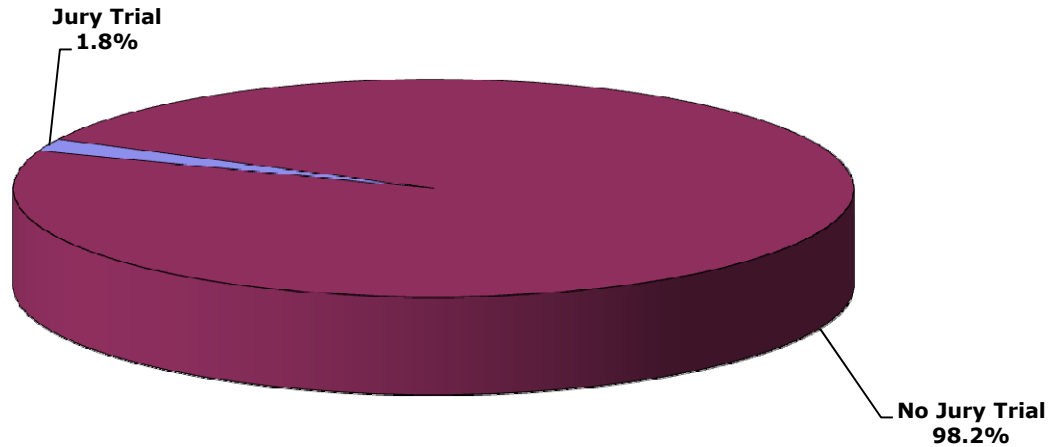
**CIRCUIT CRIMINAL JURY TRIAL AND
GUILTY DISPOSITION RATES*
by Circuit
FY 2011-12**

Circuit (Circuit Seat)	By Jury - Acquittal/ Dismissal, Pleas, and Convictions	Total Dispositions	Jury Trial Rates	Total Pleas and Convictions	Total Dispositons (excludes Transferred and Other)	Guilty Disposition Rates*
First (Pensacola)	217	9,947	2.2%	7,595	9,413	80.7%
Second (Tallahassee)	193	4,908	3.9%	4,147	4,686	88.5%
Third (Lake City)	22	2,357	0.9%	1,782	2,019	88.3%
Fourth (Jacksonville)	243	11,964	2.0%	10,977	11,493	95.5%
Fifth (Tavares)	108	10,646	1.0%	8,692	9,861	88.1%
Sixth (Clearwater)	197	16,921	1.2%	14,058	14,692	95.7%
Seventh (Daytona Beach)	115	8,964	1.3%	7,305	7,945	91.9%
Eighth (Gainesville)	95	4,596	2.1%	3,600	4,115	87.5%
Ninth (Orlando)	433	14,940	2.9%	9,554	12,210	78.2%
Tenth (Bartow)	152	7,070	2.1%	6,117	6,594	92.8%
Eleventh (Miami)	345	20,440	1.7%	14,872	16,223	91.7%
Twelfth (Sarasota)	115	6,524	1.8%	5,291	5,962	88.7%
Thirteenth (Tampa)	239	13,960	1.7%	10,452	12,507	83.6%
Fourteenth (Panama City)	54	5,557	1.0%	4,000	4,430	90.3%
Fifteenth (West Palm Beach)	189	9,866	1.9%	7,237	9,131	79.3%
Sixteenth (Key West)	23	906	2.5%	625	670	93.3%
Seventeenth (Ft. Lauderdale)	262	15,558	1.7%	10,496	11,430	91.8%
Eighteenth (Sanford)	160	8,338	1.9%	6,713	7,159	93.8%
Nineteenth (Ft. Pierce)	128	5,621	2.3%	3,801	4,046	93.9%
Twentieth (Ft. Myers)	156	8,247	1.9%	6,546	7,738	84.6%
Total	3,446	187,330	1.8%	143,860	162,324	88.6%

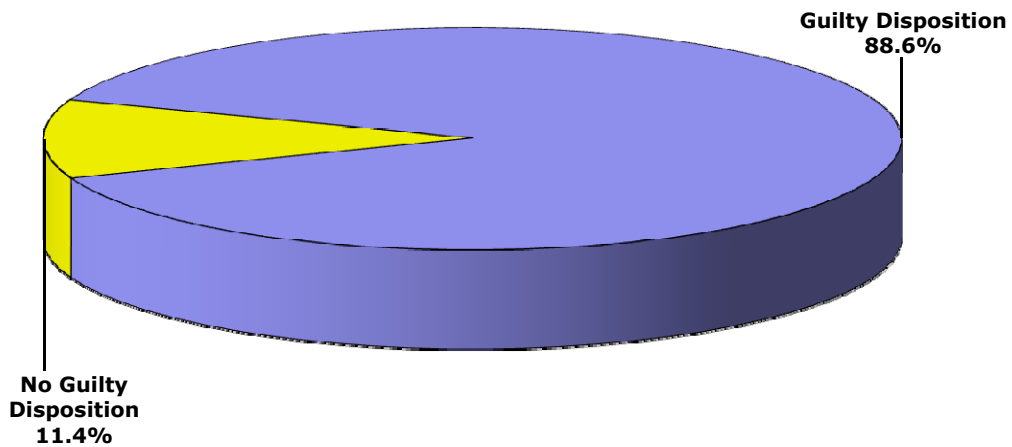
*Guilty Disposition Rates were calculated by dividing the sum of before trial and after trial pleas and convictions by the sum of all dispositions (excluding transferred and other). **These data are not intended as a measure of efficiency of the judiciary, state attorneys, or public defenders.**

Circuit Criminal ♦ Dispositions

**CIRCUIT CRIMINAL JURY TRIAL RATE
FY 2011-12**



**CIRCUIT CRIMINAL GUILTY DISPOSITION RATE
FY 2011-12**



The Circuit Criminal division also involves other statistics such as clearance rates, reopenings, no files, appeals filed from county court, post conviction relief motions, probation revocation hearings, bond hearings, and adversary preliminary hearings. **These data are provided by the 67 clerks of court. However, dispositions and special proceedings data are not audited for accuracy by the OSCA.**

Clearance Rates - The clearance rate is a useful measure of the responsiveness of a court to the demand for services, and is nationally recognized as a measure of court performance. The rate is determined by taking the total number of cases *disposed* divided by the total number of cases *filed* during a specific time period. If a court received 1,000 new cases a month and disposed of 900 cases within the same month, the clearance rate for that month would be 90%. A 100% clearance rate means that a court is disposing of at least as many cases as have been filed during the reporting period. Thus, where clearance rates exceed 100%, those circuits are actually disposing of cases more quickly than cases are being filed for the period in question.

Reopenings - A reopening occurs when a case, that has previously been reported as disposed, is resubmitted to the court through a motion or petition.

No Files - A no file occurs when all charges against a defendant are dropped and the prosecutor did not file an information or seek an indictment.

Appeals Filed From County Court - An appeal filed from county court is a request that a case be removed from the county court and sent to the circuit court for review.

Post Conviction Relief Motions - A post conviction relief motion is a motion to vacate, set aside, or correct a sentence pursuant to rule 3.850, Florida Rules of Criminal Procedure.

Probation Revocation Hearings - A probation revocation hearing is a proceeding in which a judge determines whether a defendant's probation should be modified or revoked following an alleged violation.

Bond Hearings - A bond hearing is a hearing in which a circuit judge, or a county court judge acting as a circuit judge, considers a defendant's pretrial release status at a special hearing for the purpose of setting or modifying bond or other pretrial release.

Adversary Preliminary Hearings - An adversary preliminary hearing is a proceeding in which a judge considers evidence presented so that the court can determine whether there is sufficient cause to hold the accused for trial.

Circuit Criminal ◆ Other Statistics

CIRCUIT CRIMINAL CLEARANCE RATES
by Circuit
FY 2011-12

Circuit	Filings	Dispositions	Clearance Rates
1	10,698	9,947	93.0%
2	4,859	4,908	101.0%
3	2,478	2,357	95.1%
4	11,859	11,964	100.9%
5	10,546	10,646	100.9%
6	17,517	16,921	96.6%
7	9,691	8,964	92.5%
8	4,851	4,596	94.7%
9	16,938	14,940	88.2%
10	10,003	7,070	70.7%
11	19,218	20,440	106.4%
12	6,713	6,524	97.2%
13	12,810	13,960	109.0%
14	5,248	5,557	105.9%
15	9,170	9,866	107.6%
16	1,244	906	72.8%
17	16,979	15,558	91.6%
18	8,949	8,338	93.2%
19	5,674	5,621	99.1%
20	8,906	8,247	92.6%
Total	194,351	187,330	96.4%

**CIRCUIT CRIMINAL SPECIAL PROCEEDINGS
by Circuit
FY 2011-12**

Circuit	Reopenings	No Files	Appeal Filed From County Court	Post Conviction Relief Motions	Probation Revocation Hearings	Bond Hearings	Adversary Preliminary Hearings	Total
1	5,683	729	46	982	4,441	1,164	0	13,045
2	2,860	207	16	359	1,955	56	1	5,454
3	1,186	326	1	205	1,868	15	0	3,601
4	2,381	4,619	31	981	1,435	344	8	9,799
5	6,424	2,472	39	550	4,426	326	0	14,237
6	4,509	4,252	102	862	7,188	16,491	2	33,406
7	1,745	3,803	3	528	4,484	395	1	10,959
8	2,571	1,979	21	179	2,423	1,678	1	8,852
9	2,222	4,991	21	475	284	898	3	8,894
10	4,516	1,580	36	1,169	4,866	622	50	12,839
11	14	10,454	61	5,313	5,809	8,149	9	29,809
12	5,931	2,250	11	182	2,982	1,448	1	12,805
13	8,358	2,550	1	412	8,466	3,741	715	24,243
14	1,114	628	0	111	2,892	194	0	4,939
15	2,500	4,654	38	606	2,285	1,448	43	11,574
16	39	0	0	2	112	45	0	198
17	2,149	2,417	0	1,089	1,493	2,204	7	9,359
18	5,721	1,855	57	284	5,475	1,311	0	14,703
19	4,133	1,998	20	211	2,020	371	0	8,753
20	3,377	2,890	18	430	2,362	866	1	9,944
Total	67,433	54,654	522	14,930	67,266	41,766	842	247,413