

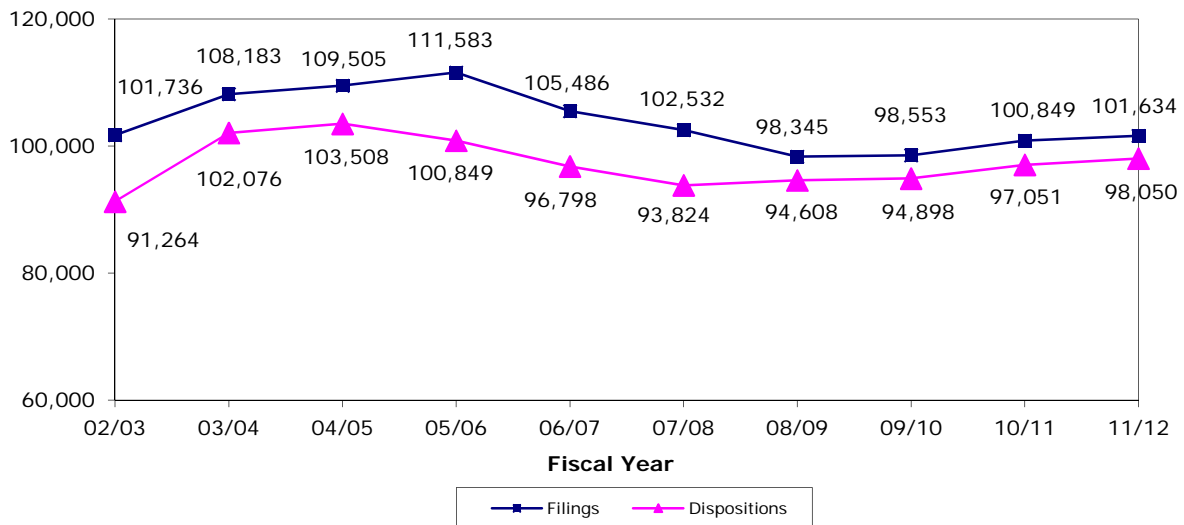
Circuit Probate ♦ Overview

The Circuit Probate division includes the following two categories of probate cases: probate and mental health and trust and guardianship. Within these categories are the following case types:

- Probate and Mental Health** - probate, Baker Act, substance abuse, and other social cases
- Trust and Guardianship** - adult and minor guardianship and trust

In the Circuit Probate division, *Filings* correspond to each petition filed. *Dispositions* correspond to each petition disposed.

CIRCUIT PROBATE FILINGS AND DISPOSITIONS FY 2002-03 to FY 2011-12

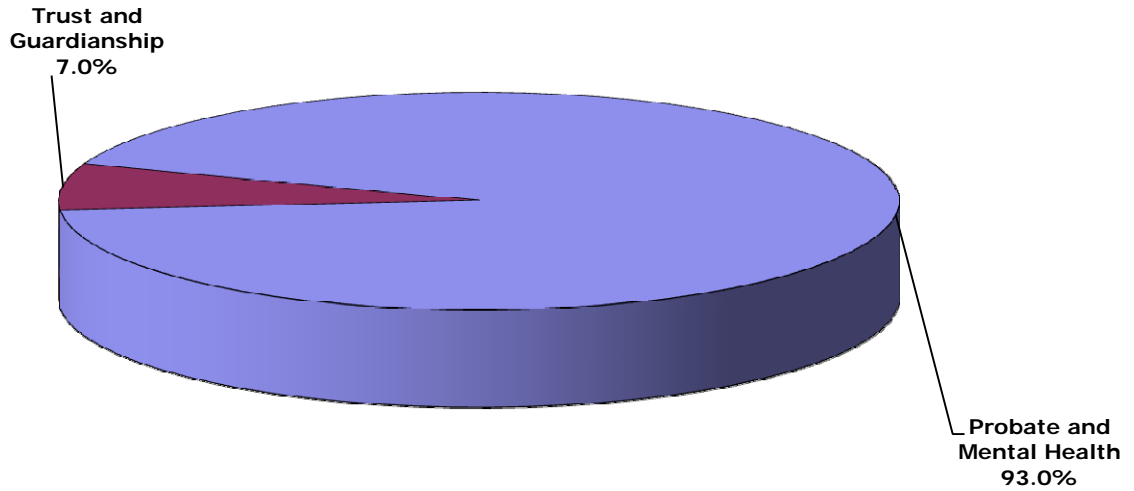


CIRCUIT PROBATE FILINGS
Statewide by Category/Case Type and Month
FY 2011-12

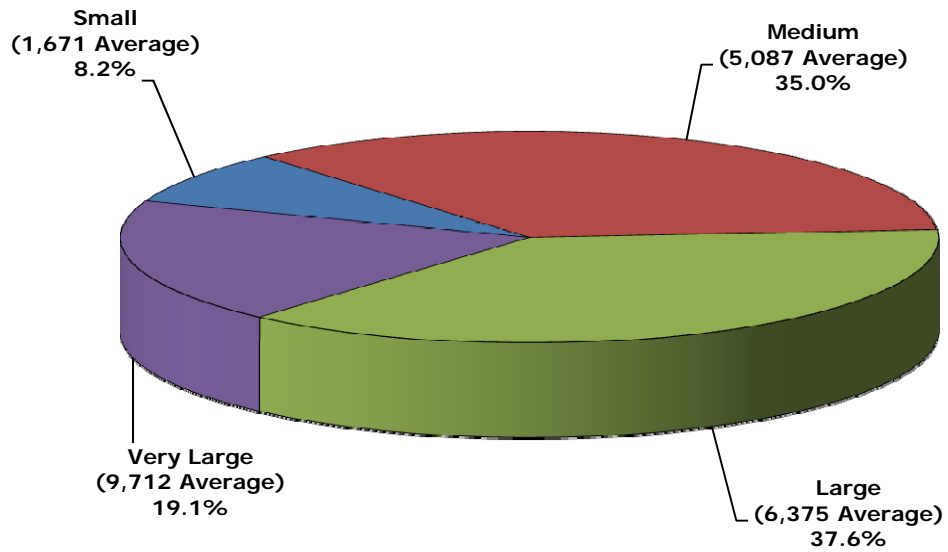
Category/ Case Type	Jul	Aug	Sep	Oct	Nov	Dec	Jan	Feb	Mar	Apr	May	Jun	Total
A. Probate and Mental Health	7,444	8,384	7,494	7,281	7,283	7,221	7,765	7,951	8,758	8,456	8,536	7,952	94,525
1. Probate	3,786	4,406	3,714	3,567	3,697	3,657	3,897	4,126	4,500	4,232	4,264	4,038	47,884
2. Baker Act	2,566	2,754	2,671	2,624	2,528	2,517	2,797	2,683	2,986	3,062	3,089	2,844	33,121
3. Substance Abuse	796	827	769	732	714	699	691	776	867	775	793	736	9,175
4. Other Social Cases	296	397	340	358	344	348	380	366	405	387	390	334	4,345
B. Trust and Guardianship	545	624	565	583	579	567	547	597	638	578	692	594	7,109
1. Guardianship	464	543	483	530	510	489	477	525	555	508	611	512	6,207
2. Trust	81	81	82	53	69	78	70	72	83	70	81	82	902
Total	7,989	9,008	8,059	7,864	7,862	7,788	8,312	8,548	9,396	9,034	9,228	8,546	101,634

Circuit Probate ♦ Filings

**CIRCUIT PROBATE FILINGS
by Category
FY 2011-12**



**CIRCUIT PROBATE FILINGS
by Circuit Size*
FY 2011-12**



*Small Circuits - 2nd, 3rd, 8th, 14th, 16th;
 Medium Circuits - 1st, 5th, 7th, 10th, 12th, 18th, 19th;
 Large Circuits - 4th, 6th, 9th, 13th, 15th, 20th; and
 Very Large Circuits - 11th, 17th (as defined in the Glossary).

CIRCUIT PROBATE FILINGS
by Circuit and Case Type
FY 2011-12

Circuit	Probate	Baker Act	Substance Abuse	Other Social Cases	Guardianship	Trust	Total
1	1,762	1,954	520	131	204	51	4,622
2	951	1,557	49	250	147	27	2,981
3	590	217	199	27	68	2	1,103
4	2,223	1,711	423	211	424	41	5,033
5	3,745	1,926	215	311	442	17	6,656
6	4,658	2,957	141	282	427	77	8,542
7	2,812	1,401	647	78	326	38	5,302
8	744	1,043	188	100	77	11	2,163
9	2,038	1,787	540	217	367	33	4,982
10	1,819	1,679	370	194	277	21	4,360
11	3,659	4,706	796	902	845	59	10,967
12	2,987	1,234	1,413	203	346	75	6,258
13	2,120	2,439	748	262	330	42	5,941
14	875	434	235	56	85	3	1,688
15	4,337	1,185	855	251	465	222	7,315
16	322	32	40	11	13	0	418
17	3,887	3,034	701	366	395	74	8,457
18	2,333	1,075	699	160	327	39	4,633
19	1,920	1,229	249	117	233	28	3,776
20	4,102	1,521	147	216	409	42	6,437
Total	47,884	33,121	9,175	4,345	6,207	902	101,634

Circuit Probate ◆ Filings

CIRCUIT PROBATE FILINGS
by Circuit/County and Category
 FY 2011-12

Circuit/County	Probate and Mental Health	Trust and Guardianship	Total
Circuit 1	4,367	255	4,622
Escambia	2,656	103	2,759
Okaloosa	927	58	985
Santa Rosa	565	75	640
Walton	219	19	238
Circuit 2	2,807	174	2,981
Franklin	83	1	84
Gadsden	394	74	468
Jefferson	66	15	81
Leon	2,112	76	2,188
Liberty	26	1	27
Wakulla	126	7	133
Circuit 3	1,033	70	1,103
Columbia	442	38	480
Dixie	78	3	81
Hamilton	63	0	63
Lafayette	32	3	35
Madison	124	6	130
Suwannee	205	12	217
Taylor	89	8	97
Circuit 4	4,568	465	5,033
Clay	447	60	507
Duval	3,878	374	4,252
Nassau	243	31	274

CIRCUIT PROBATE FILINGS, Continued
by Circuit/County and Category
 FY 2011-12

Circuit/County	Probate and Mental Health	Trust and Guardianship	Total
Circuit 5	6,197	459	6,656
Citrus	780	76	856
Hernando	1,677	124	1,801
Lake	1,620	84	1,704
Marion	1,754	147	1,901
Sumter	366	28	394
Circuit 6	8,038	504	8,542
Pasco	2,511	123	2,634
Pinellas	5,527	381	5,908
Circuit 7	4,938	364	5,302
Flagler	451	121	572
Putnam	356	10	366
St. Johns	706	75	781
Volusia	3,425	158	3,583
Circuit 8	2,075	88	2,163
Alachua	1,544	51	1,595
Baker	132	7	139
Bradford	77	9	86
Gilchrist	57	6	63
Levy	160	15	175
Union	105	0	105
Circuit 9	4,582	400	4,982
Orange	3,730	308	4,038
Osceola	852	92	944

Circuit Probate ♦ Filings

CIRCUIT PROBATE FILINGS, Continued
by Circuit/County and Category
 FY 2011-12

Circuit/County	Probate and Mental Health	Trust and Guardianship	Total
Circuit 10	4,062	298	4,360
Hardee	68	32	100
Highlands	855	45	900
Polk	3,139	221	3,360
Circuit 11	10,063	904	10,967
Miami-Dade	10,063	904	10,967
Circuit 12	5,837	421	6,258
Desoto	85	10	95
Manatee	1,628	124	1,752
Sarasota	4,124	287	4,411
Circuit 13	5,569	372	5,941
Hillsborough	5,569	372	5,941
Circuit 14	1,600	88	1,688
Bay	977	44	1,021
Calhoun	73	4	77
Gulf	65	10	75
Holmes	100	5	105
Jackson	279	22	301
Washington	106	3	109
Circuit 15	6,628	687	7,315
Palm Beach	6,628	687	7,315
Circuit 16	405	13	418
Monroe	405	13	418

CIRCUIT PROBATE FILINGS, Continued
by Circuit/County and Category
 FY 2011-12

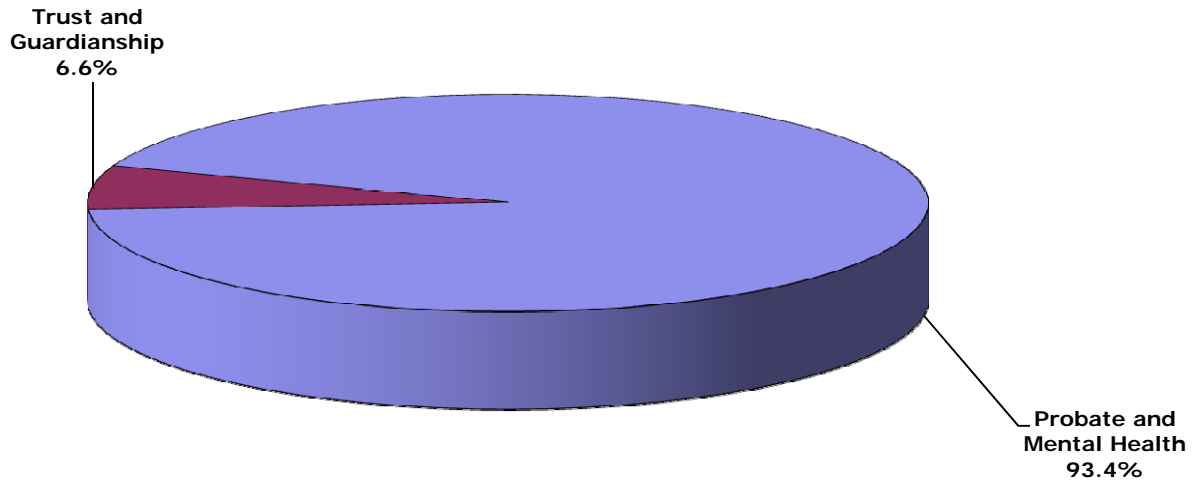
Circuit/County	Probate and Mental Health	Trust and Guardianship	Total
Circuit 17	7,988	469	8,457
Broward	7,988	469	8,457
Circuit 18	4,267	366	4,633
Brevard	2,482	214	2,696
Seminole	1,785	152	1,937
Circuit 19	3,515	261	3,776
Indian River	841	68	909
Martin	721	64	785
Okeechobee	150	9	159
St. Lucie	1,803	120	1,923
Circuit 20	5,986	451	6,437
Charlotte	1,661	91	1,752
Collier	1,592	149	1,741
Glades	39	5	44
Hendry	97	9	106
Lee	2,597	197	2,794
Total	94,525	7,109	101,634

Circuit Probate ♦ Dispositions

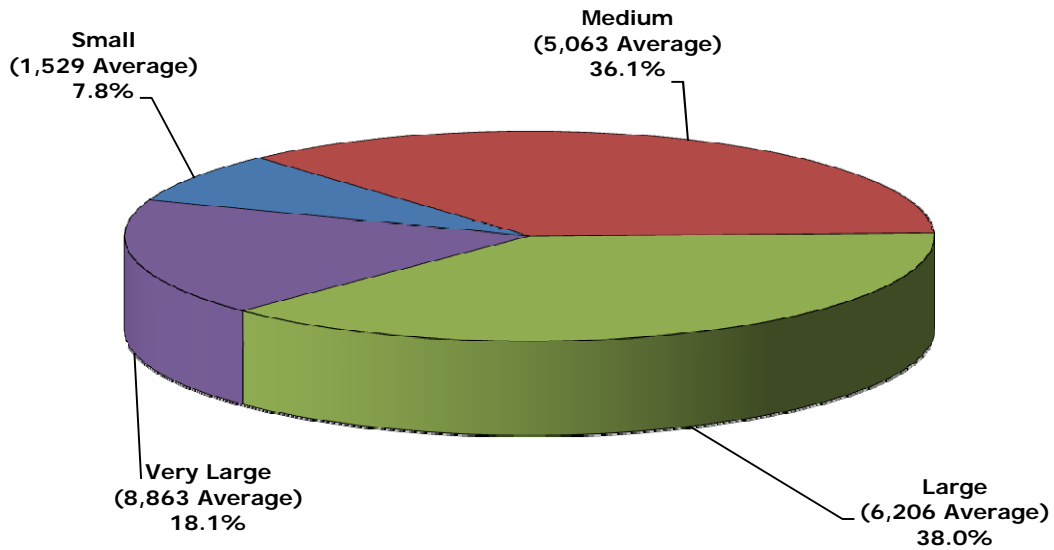
CIRCUIT PROBATE DISPOSITIONS
Statewide by Category/Case Type and Month
FY 2011-12

Category/ Case Type	Jul	Aug	Sep	Oct	Nov	Dec	Jan	Feb	Mar	Apr	May	Jun	Total
A. Probate and Mental Health	6,858	8,072	7,341	7,303	6,980	6,852	7,550	7,434	8,187	7,598	9,768	7,600	91,543
1. Probate	3,480	4,222	3,812	3,860	3,517	3,475	3,930	3,756	4,012	3,801	4,089	3,712	45,666
2. Baker Act	2,296	2,621	2,493	2,507	2,498	2,417	2,617	2,601	2,950	2,745	4,504	2,755	33,004
3. Substance Abuse	754	841	737	643	683	691	665	741	859	725	797	765	8,901
4. Other Social Cases	328	388	299	293	282	269	338	336	366	327	378	368	3,972
B. Trust and Guardianship	481	605	508	578	514	473	576	584	571	550	569	498	6,507
1. Guardianship	372	495	456	514	475	427	517	541	514	504	523	444	5,782
2. Trust	109	110	52	64	39	46	59	43	57	46	46	54	725
Total	7,339	8,677	7,849	7,881	7,494	7,325	8,126	8,018	8,758	8,148	10,337	8,098	98,050

CIRCUIT PROBATE DISPOSITIONS by Category FY 2011-12



CIRCUIT PROBATE DISPOSITIONS by Circuit Size* FY 2011-12



*Small Circuits - 2nd, 3rd, 8th, 14th, 16th;
Medium Circuits - 1st, 5th, 7th, 10th, 12th, 18th, 19th;
Large Circuits - 4th, 6th, 9th, 13th, 15th, 20th; and
Very Large Circuits - 11th, 17th (as defined in the Glossary).

Circuit Probate ♦ Dispositions

**CIRCUIT PROBATE DISPOSITIONS
by Circuit and Case Type
FY 2011-12**

Circuit	Probate	Baker Act	Substance Abuse	Other Social Cases	Guardianship	Trust	Total
1	1,839	3,278	522	112	207	32	5,990
2	802	1,492	33	256	129	26	2,738
3	439	213	188	16	31	2	889
4	2,080	1,670	440	215	373	24	4,802
5	3,432	1,869	196	289	384	14	6,184
6	4,700	3,083	138	274	367	74	8,636
7	2,685	1,389	668	75	242	32	5,091
8	737	1,027	162	51	99	5	2,081
9	2,054	1,748	515	210	411	27	4,965
10	1,842	1,750	446	108	269	20	4,435
11	3,314	4,634	794	927	900	27	10,596
12	2,883	1,113	1,369	195	338	63	5,961
13	1,975	2,396	750	244	326	30	5,721
14	756	423	231	47	56	1	1,514
15	3,823	1,217	814	257	364	191	6,666
16	330	31	39	9	16	0	425
17	3,933	1,981	572	231	371	41	7,129
18	2,082	1,035	671	152	264	49	4,253
19	1,821	1,123	241	99	220	26	3,530
20	4,139	1,532	112	205	415	41	6,444
Total	45,666	33,004	8,901	3,972	5,782	725	98,050

CIRCUIT PROBATE DISPOSITIONS
by Circuit/County and Category
 FY 2011-12

Circuit/County	Probate and Mental Health	Trust and Guardianship	Total
Circuit 1	5,751	239	5,990
Escambia	2,639	92	2,731
Okaloosa	2,388	55	2,443
Santa Rosa	517	76	593
Walton	207	16	223
Circuit 2	2,583	155	2,738
Franklin	28	0	28
Gadsden	409	82	491
Jefferson	17	3	20
Leon	2,084	69	2,153
Liberty	17	1	18
Wakulla	28	0	28
Circuit 3	856	33	889
Columbia	426	19	445
Dixie	54	0	54
Hamilton	30	0	30
Lafayette	33	1	34
Madison	103	3	106
Suwannee	131	2	133
Taylor	79	8	87
Circuit 4	4,405	397	4,802
Clay	424	37	461
Duval	3,781	331	4,112
Nassau	200	29	229

Circuit Probate ♦ Dispositions

CIRCUIT PROBATE DISPOSITIONS, Continued
by Circuit/County and Category
 FY 2011-12

Circuit/County	Probate and Mental Health	Trust and Guardianship	Total
Circuit 5	5,786	398	6,184
Citrus	770	74	844
Hernando	1,494	101	1,595
Lake	1,651	77	1,728
Marion	1,544	127	1,671
Sumter	327	19	346
Circuit 6	8,195	441	8,636
Pasco	2,561	94	2,655
Pinellas	5,634	347	5,981
Circuit 7	4,817	274	5,091
Flagler	383	33	416
Putnam	278	7	285
St. Johns	699	89	788
Volusia	3,457	145	3,602
Circuit 8	1,977	104	2,081
Alachua	1,549	84	1,633
Baker	79	6	85
Bradford	87	10	97
Gilchrist	38	0	38
Levy	126	4	130
Union	98	0	98
Circuit 9	4,527	438	4,965
Orange	3,657	357	4,014
Osceola	870	81	951

CIRCUIT PROBATE DISPOSITIONS, Continued
by Circuit/County and Category
 FY 2011-12

Circuit/County	Probate and Mental Health	Trust and Guardianship	Total
Circuit 10	4,146	289	4,435
Hardee	65	36	101
Highlands	807	50	857
Polk	3,274	203	3,477
Circuit 11	9,669	927	10,596
Miami-Dade	9,669	927	10,596
Circuit 12	5,560	401	5,961
Desoto	57	29	86
Manatee	1,577	87	1,664
Sarasota	3,926	285	4,211
Circuit 13	5,365	356	5,721
Hillsborough	5,365	356	5,721
Circuit 14	1,457	57	1,514
Bay	909	11	920
Calhoun	35	3	38
Gulf	58	17	75
Holmes	79	5	84
Jackson	256	18	274
Washington	120	3	123
Circuit 15	6,111	555	6,666
Palm Beach	6,111	555	6,666
Circuit 16	409	16	425
Monroe	409	16	425

Circuit Probate ♦ Dispositions

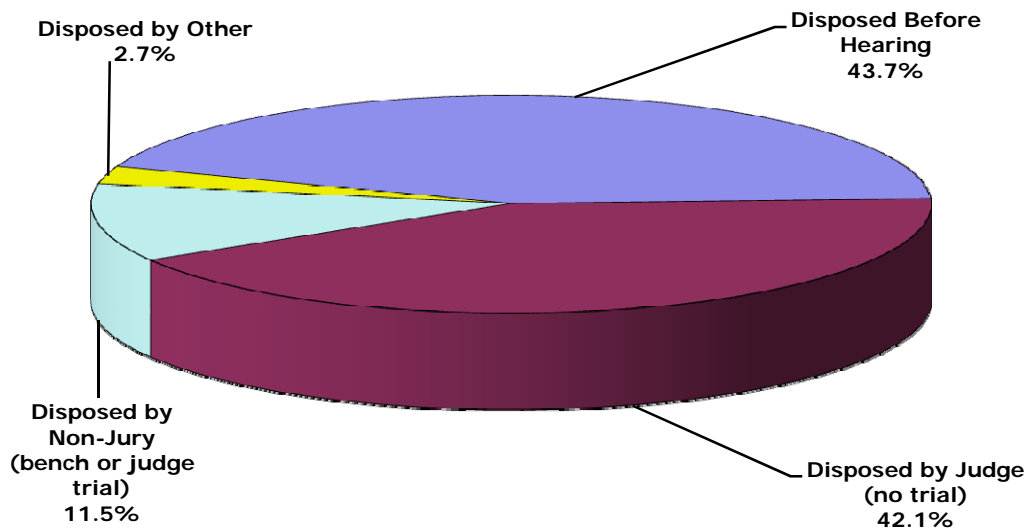
CIRCUIT PROBATE DISPOSITIONS, Continued
by Circuit/County and Category
 FY 2011-12

Circuit/County	Probate and Mental Health	Trust and Guardianship	Total
Circuit 17	6,717	412	7,129
Broward	6,717	412	7,129
Circuit 18	3,940	313	4,253
Brevard	2,056	170	2,226
Seminole	1,884	143	2,027
Circuit 19	3,284	246	3,530
Indian River	773	51	824
Martin	681	63	744
Okeechobee	155	12	167
St. Lucie	1,675	120	1,795
Circuit 20	5,988	456	6,444
Charlotte	1,621	86	1,707
Collier	1,565	150	1,715
Glades	23	1	24
Hendry	87	16	103
Lee	2,692	203	2,895
Total	91,543	6,507	98,050

CIRCUIT PROBATE DISPOSITIONS
Statewide by Disposition Type and Case Type
 FY 2011-12

Disposition Type	Probate	Baker Act	Substance Abuse	Other Social Cases	Guardianship	Trust	Total
A. Disposed Before Hearing	21,592	16,858	2,910	624	668	213	42,865
B. Disposed by Judge (no trial)	23,696	7,199	4,859	1,820	3,255	479	41,308
C. Disposed by Non-Jury	222	6,706	1,089	1,476	1,783	2	11,278
D. Disposed by Other	156	2,241	43	52	76	31	2,599
Total	45,666	33,004	8,901	3,972	5,782	725	98,050

CIRCUIT PROBATE DISPOSITIONS
by Disposition Type
 FY 2011-12



Circuit Probate ♦ Other Statistics

The Circuit Probate division also involves other statistics in the form of clearance rates and reopenings. **These data are provided by the 67 clerks of court. However, dispositions and special proceedings data are not audited for accuracy by the OSCA.**

Clearance Rates - The clearance rate is a useful measure of the responsiveness of a court to the demand for services, and is nationally recognized as a measure of court performance. The rate is determined by taking the total number of cases *disposed* divided by the total number of cases *filed* during a specific time period. If a court received 1,000 new cases a month and *disposed* of 900 cases within the same month, the clearance rate for that month would be 90%. A 100% clearance rate means that a court is disposing of at least as many cases as have been filed during the reporting period. Thus, where clearance rates exceed 100%, those circuits are actually disposing of cases more quickly than cases are being filed for the period in question.

Reopenings - A reopening occurs when a case that has previously been reported as disposed is resubmitted to the court through a motion or petition.

CIRCUIT PROBATE CLEARANCE RATES
by Circuit
FY 2011-12

Circuit	Filings	Dispositions	Clearance Rates
1	4,622	5,990	129.6%
2	2,981	2,738	91.8%
3	1,103	889	80.6%
4	5,033	4,802	95.4%
5	6,656	6,184	92.9%
6	8,542	8,636	101.1%
7	5,302	5,091	96.0%
8	2,163	2,081	96.2%
9	4,982	4,965	99.7%
10	4,360	4,435	101.7%
11	10,967	10,596	96.6%
12	6,258	5,961	95.3%
13	5,941	5,721	96.3%
14	1,688	1,514	89.7%
15	7,315	6,666	91.1%
16	418	425	101.7%
17	8,457	7,129	84.3%
18	4,633	4,253	91.8%
19	3,776	3,530	93.5%
20	6,437	6,444	100.1%
Total	101,634	98,050	96.5%

Circuit Probate ♦ Other Statistics

**CIRCUIT PROBATE SPECIAL PROCEEDINGS
by Circuit
FY 2011-12**

Circuit	Reopenings
1	3,555
2	1,256
3	28
4	1,799
5	3,056
6	7,353
7	2,415
8	328
9	4,782
10	2,949
11	23,829
12	4,261
13	5,176
14	610
15	6,047
16	51
17	296
18	3,493
19	1,676
20	4,103
Total	77,063

-This page intentionally left blank-