

Circuit Criminal ♦ Overview

The Circuit Criminal division includes the following five categories of felony offenses: capital murder, violent crimes, crimes against persons, crimes against property, and drug crimes. Within these categories are the following case types:

Capital Murder - capital murder offenses

Violent Crimes - non-capital murder (examples of non-capital murder cases include: negligent manslaughter, vehicular manslaughter, non-premeditated murder, commission of a felony which causes death, aggravated manslaughter, and other similar offenses) and sexual offenses

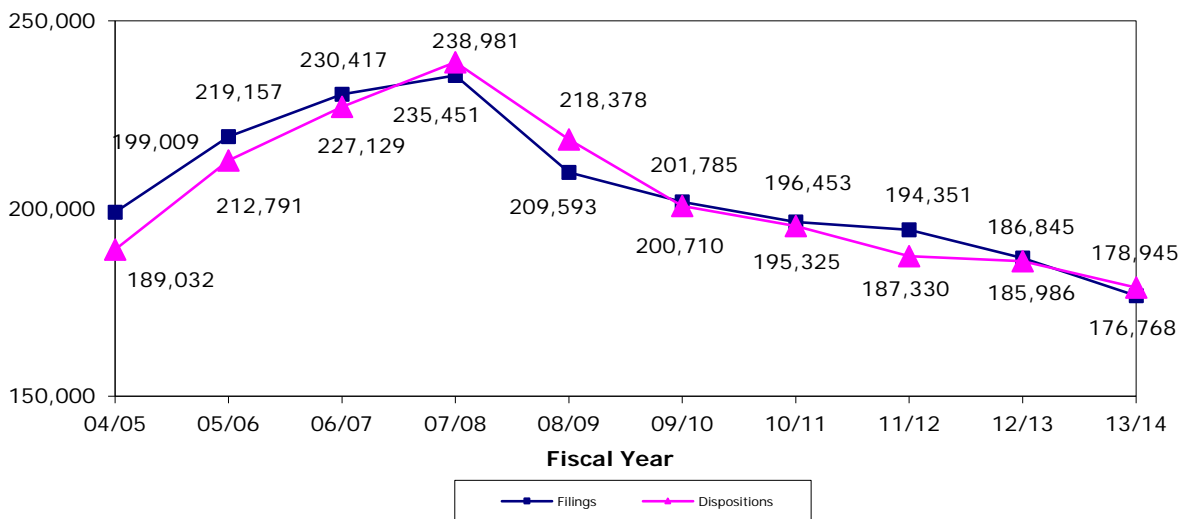
Crimes Against Persons - robbery and other crimes against persons

Crimes Against Property - burglary, theft, forgery, fraud, worthless checks, other crimes against property, and other felony offenses (examples of other felony offenses are: weapon charges, resisting arrest, contempt of court, failure to appear, accessory after the fact, and book-making)

Drug Crimes - drug offenses

In the Circuit Criminal division, *filings* correspond to each defendant against whom an information or indictment is filed. *Dispositions* correspond to each defendant for whom a final judicial decision is rendered terminating a criminal proceeding by an acquittal, a dismissal, or a judgment stating the specific sentence (in the case of a conviction). *Charges (Counts)* are defined as each individual offense with which a defendant is accused. These charges (counts) are tied directly to each filing. *Jury trials* are defined as trials in which a group of citizens is impaneled, selected, and sworn to determine the issues of fact in a case.

**CIRCUIT CRIMINAL FILINGS AND DISPOSITIONS*
FY 2004-05 to FY 2013-14**

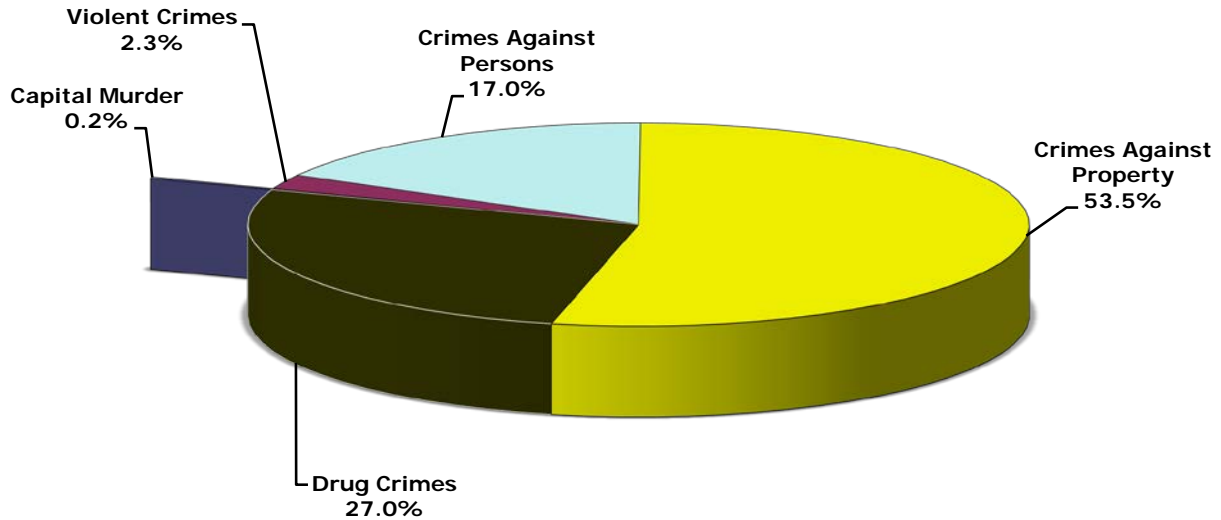


CIRCUIT CRIMINAL FILINGS
Statewide by Category/Case Type and Month
FY 2013-14

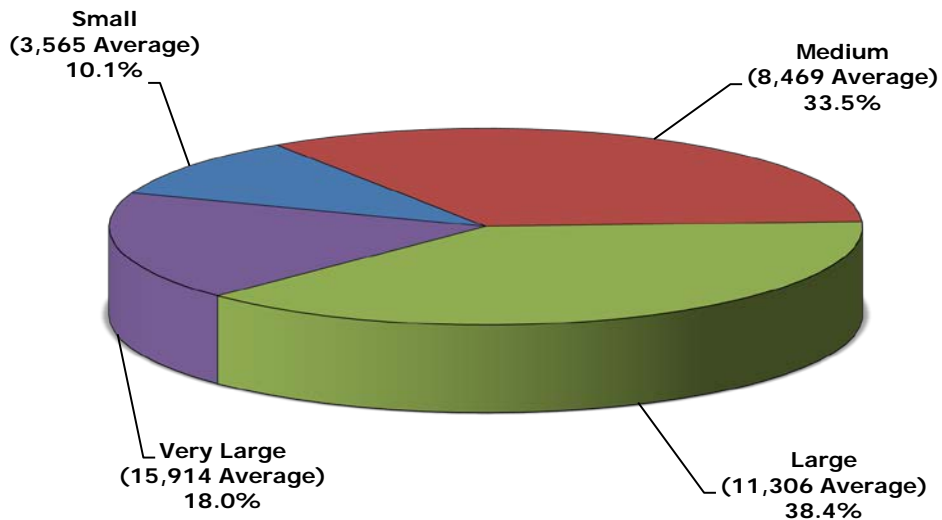
Category/ Case Type	Jul	Aug	Sep	Oct	Nov	Dec	Jan	Feb	Mar	Apr	May	Jun	Total
A. Capital Murder	28	39	27	35	35	21	20	25	26	34	19	32	341
1. Capital Murder	28	39	27	35	35	21	20	25	26	34	19	32	341
B. Violent Crimes	382	370	307	362	303	311	304	321	327	347	417	363	4,114
1. Non-Capital Murder	95	106	70	103	82	96	89	93	81	93	110	108	1,126
2. Sexual Offenses	287	264	237	259	221	215	215	228	246	254	307	255	2,988
C. Crimes Against Persons	2,752	2,593	2,361	2,705	2,225	2,322	2,494	2,363	2,377	2,518	2,693	2,755	30,158
1. Robbery	445	419	394	387	318	352	432	403	299	363	425	431	4,668
2. Other Crimes Against Persons	2,307	2,174	1,967	2,318	1,907	1,970	2,062	1,960	2,078	2,155	2,268	2,324	25,490
D. Crimes Against Property	8,337	8,300	8,010	8,691	6,729	7,298	7,776	7,710	7,807	7,706	8,225	7,900	94,489
1. Burglary	1,687	1,727	1,770	1,756	1,279	1,483	1,457	1,486	1,475	1,520	1,674	1,624	18,938
2. Theft, Forgery, Fraud	3,993	3,960	3,773	4,304	3,360	3,518	3,870	3,902	3,851	3,657	3,828	3,767	45,783
3. Worthless Checks	133	126	105	116	68	55	90	77	82	60	83	97	1,092
4. Other Crimes Against Property	143	155	180	190	134	129	159	126	173	133	173	150	1,845
5. Other	2,381	2,332	2,182	2,325	1,888	2,113	2,200	2,119	2,226	2,336	2,467	2,262	26,831
E. Drug Crimes	4,065	4,082	4,012	4,461	3,392	3,758	3,611	3,671	4,228	4,088	4,066	4,232	47,666
1. Drugs	4,065	4,082	4,012	4,461	3,392	3,758	3,611	3,671	4,228	4,088	4,066	4,232	47,666
Total	15,564	15,384	14,717	16,254	12,684	13,710	14,205	14,090	14,765	14,693	15,420	15,282	176,768

Circuit Criminal ♦ Filings

**CIRCUIT CRIMINAL FILINGS
by Category
FY 2013-14**



**CIRCUIT CRIMINAL FILINGS
by Circuit Size*
FY 2013-14**



*Small Circuits - 2nd, 3rd, 8th, 14th, 16th;
 Medium Circuits - 1st, 5th, 7th, 10th, 12th, 18th, 19th;
 Large Circuits - 4th, 6th, 9th, 13th, 15th, 20th; and
 Very Large Circuits - 11th, 17th (as defined in the Glossary).

CIRCUIT CRIMINAL FILINGS
by Circuit and Case Type
FY 2013-14

Circuit	Capital Murder	Non-Capital Murder	Sexual Offenses	Robbery	Other Crimes Against Persons	Burglary	Theft Forgery Fraud	Worthless Checks	Other Crimes Against Property	Drugs	Other	Total
1	19	38	204	199	2,114	1,515	2,809	143	96	2,212	2,013	11,362
2	5	36	127	121	860	517	1,217	60	45	802	669	4,459
3	9	10	43	43	381	279	464	28	20	460	533	2,270
4	7	136	266	281	1,264	1,148	2,989	12	57	2,526	1,270	9,956
5	10	33	208	167	1,386	964	2,607	65	92	2,510	1,466	9,508
6	27	53	154	251	1,812	1,248	4,021	209	122	4,635	2,244	14,776
7	22	37	117	197	1,175	995	2,229	122	81	2,433	1,013	8,421
8	4	18	85	88	691	394	1,066	57	22	1,318	630	4,373
9	44	107	250	478	1,950	1,574	3,799	11	148	3,742	1,788	13,891
10	10	54	162	154	1,496	1,146	1,940	58	100	2,315	1,309	8,744
11	46	246	258	774	2,446	1,710	4,050	24	136	4,798	2,491	16,979
12	3	35	118	134	691	420	2,026	8	58	1,946	851	6,290
13	23	54	112	327	1,713	1,323	3,479	107	111	3,308	1,434	11,991
14	4	14	88	86	766	389	890	12	38	1,168	1,384	4,839
15	42	71	114	383	1,254	1,096	2,293	33	60	2,577	795	8,718
16	0	8	23	27	355	156	383	24	26	659	222	1,883
17	32	81	221	528	2,064	1,715	3,801	5	130	3,581	2,691	14,849
18	20	20	137	179	1,362	920	2,450	90	389	2,096	1,416	9,079
19	8	30	131	87	768	545	1,354	17	45	1,700	1,194	5,879
20	6	45	170	164	942	884	1,916	7	69	2,880	1,418	8,501
Total	341	1,126	2,988	4,668	25,490	18,938	45,783	1,092	1,845	47,666	26,831	176,768

Circuit Criminal ◆ Filings

CIRCUIT CRIMINAL FILINGS
by Circuit/County and Category
FY 2013-14

Circuit/County	Capital Murder	Violent Crimes	Crimes Against Persons	Crimes Against Property	Drug Crimes	Total
Circuit 1	19	242	2,313	6,576	2,212	11,362
Escambia	10	120	1,338	3,776	1,021	6,265
Okaloosa	6	33	520	1,531	636	2,726
Santa Rosa	3	62	320	913	348	1,646
Walton	0	27	135	356	207	725
Circuit 2	5	163	981	2,508	802	4,459
Franklin	0	11	41	133	66	251
Gadsden	1	22	159	308	99	589
Jefferson	0	5	27	71	23	126
Leon	4	107	673	1,758	522	3,064
Liberty	0	11	19	43	25	98
Wakulla	0	7	62	195	67	331
Circuit 3	9	53	424	1,324	460	2,270
Columbia	7	14	122	489	63	695
Dixie	1	5	37	130	25	198
Hamilton	0	3	31	150	14	198
Lafayette	0	0	20	29	12	61
Madison	0	6	68	152	48	274
Suwannee	0	19	87	249	217	572
Taylor	1	6	59	125	81	272
Circuit 4	7	402	1,545	5,476	2,526	9,956
Clay	1	59	358	1,230	415	2,063
Duval	6	334	1,115	4,046	1,816	7,317
Nassau	0	9	72	200	295	576

CIRCUIT CRIMINAL FILINGS
by Circuit/County and Category
FY 2013-14

Circuit/County	Capital Murder	Violent Crimes	Crimes Against Persons	Crimes Against Property	Drug Crimes	Total
Circuit 5	10	241	1,553	5,194	2,510	9,508
Citrus	1	30	199	585	245	1,060
Hernando	3	42	252	1,034	431	1,762
Lake	2	55	479	1,284	681	2,501
Marion	2	94	520	2,009	930	3,555
Sumter	2	20	103	282	223	630
Circuit 6	27	207	2,063	7,844	4,635	14,776
Pasco	6	70	468	2,080	1,296	3,920
Pinellas	21	137	1,595	5,764	3,339	10,856
Circuit 7	22	154	1,372	4,440	2,433	8,421
Flagler	0	24	163	365	166	718
Putnam	6	17	111	416	276	826
St. Johns	2	19	206	583	318	1,128
Volusia	14	94	892	3,076	1,673	5,749
Circuit 8	4	103	779	2,169	1,318	4,373
Alachua	3	60	420	1,269	765	2,517
Baker	0	8	69	231	145	453
Bradford	0	12	99	262	201	574
Gilchrist	0	8	60	118	52	238
Levy	1	4	90	239	124	458
Union	0	11	41	50	31	133
Circuit 9	44	357	2,428	7,320	3,742	13,891
Orange	34	285	2,031	5,810	2,823	10,983
Osceola	10	72	397	1,510	919	2,908

Circuit Criminal ◆ Filings

CIRCUIT CRIMINAL FILINGS
by Circuit/County and Category
FY 2013-14

Circuit/County	Capital Murder	Violent Crimes	Crimes Against Persons	Crimes Against Property	Drug Crimes	Total
Circuit 10	10	216	1,650	4,553	2,315	8,744
Hardee	0	14	68	125	166	373
Highlands	1	15	169	585	126	896
Polk	9	187	1,413	3,843	2,023	7,475
Circuit 11	46	504	3,220	8,411	4,798	16,979
Miami-Dade	46	504	3,220	8,411	4,798	16,979
Circuit 12	3	153	825	3,363	1,946	6,290
Desoto	1	15	54	233	156	459
Manatee	2	81	429	1,617	669	2,798
Sarasota	0	57	342	1,513	1,121	3,033
Circuit 13	23	166	2,040	6,454	3,308	11,991
Hillsborough	23	166	2,040	6,454	3,308	11,991
Circuit 14	4	102	852	2,713	1,168	4,839
Bay	2	65	479	1,884	638	3,068
Calhoun	0	7	50	113	80	250
Gulf	0	7	44	119	51	221
Holmes	0	7	79	208	95	389
Jackson	0	9	119	227	118	473
Washington	2	7	81	162	186	438
Circuit 15	42	185	1,637	4,277	2,577	8,718
Palm Beach	42	185	1,637	4,277	2,577	8,718
Circuit 16	0	31	382	811	659	1,883
Monroe	0	31	382	811	659	1,883

CIRCUIT CRIMINAL FILINGS
by Circuit/County and Category
FY 2013-14

Circuit/County	Capital Murder	Violent Crimes	Crimes Against Persons	Crimes Against Property	Drug Crimes	Total
Circuit 17	32	302	2,592	8,342	3,581	14,849
Broward	32	302	2,592	8,342	3,581	14,849
Circuit 18	20	157	1,541	5,265	2,096	9,079
Brevard	7	94	1,029	3,582	1,311	6,023
Seminole	13	63	512	1,683	785	3,056
Circuit 19	8	161	855	3,155	1,700	5,879
Indian River	1	55	188	1,036	235	1,515
Martin	2	25	123	655	606	1,411
Okeechobee	2	23	104	277	208	614
St. Lucie	3	58	440	1,187	651	2,339
Circuit 20	6	215	1,106	4,294	2,880	8,501
Charlotte	0	20	236	1,004	805	2,065
Collier	2	62	221	744	444	1,473
Glades	0	10	29	100	22	161
Hendry	0	12	71	207	100	390
Lee	4	111	549	2,239	1,509	4,412
Total	341	4,114	30,158	94,489	47,666	176,768

Circuit Criminal ◆ Filings

CIRCUIT CRIMINAL CHARGES (COUNTS)
by Circuit/County
FY 2013-14

Circuit/County	Total Filings (Defendants)	Total Charges (Counts)	Number of Charges (Counts) per Filing
Circuit 1	11,362	23,261	2.0
Escambia	6,265	13,447	2.1
Okaloosa	2,726	4,679	1.7
Santa Rosa	1,646	3,498	2.1
Walton	725	1,637	2.3
Circuit 2	4,459	10,793	2.4
Franklin	251	447	1.8
Gadsden	589	1,004	1.7
Jefferson	126	267	2.1
Leon	3,064	8,138	2.7
Liberty	98	179	1.8
Wakulla	331	758	2.3
Circuit 3	2,270	4,938	2.2
Columbia	695	1,735	2.5
Dixie	198	376	1.9
Hamilton	198	408	2.1
Lafayette	61	133	2.2
Madison	274	588	2.1
Suwannee	572	1,056	1.8
Taylor	272	642	2.4
Circuit 4	9,956	20,245	2.0
Clay	2,063	3,650	1.8
Duval	7,317	15,618	2.1
Nassau	576	977	1.7

CIRCUIT CRIMINAL CHARGES (COUNTS)
by Circuit/County
FY 2013-14

Circuit/County	Total Filings (Defendants)	Total Charges (Counts)	Number of Charges (Counts) per Filing
Circuit 5	9,508	20,054	2.1
Citrus	1,060	2,252	2.1
Hernando	1,762	3,485	2.0
Lake	2,501	5,547	2.2
Marion	3,555	7,376	2.1
Sumter	630	1,394	2.2
Circuit 6	14,776	24,831	1.7
Pasco	3,920	7,130	1.8
Pinellas	10,856	17,701	1.6
Circuit 7	8,421	15,195	1.8
Flagler	718	1,311	1.8
Putnam	826	1,596	1.9
St. Johns	1,128	2,201	2.0
Volusia	5,749	10,087	1.8
Circuit 8	4,373	9,408	2.2
Alachua	2,517	5,535	2.2
Baker	453	1,032	2.3
Bradford	574	1,095	1.9
Gilchrist	238	528	2.2
Levy	458	975	2.1
Union	133	243	1.8
Circuit 9	13,891	31,707	2.3
Orange	10,983	25,033	2.3
Osceola	2,908	6,674	2.3

Circuit Criminal ◆ Filings

**CIRCUIT CRIMINAL CHARGES (COUNTS)
by Circuit/County
FY 2013-14**

Circuit/County	Total Filings (Defendants)	Total Charges (Counts)	Number of Charges (Counts) per Filing
Circuit 10	8,744	24,007	2.7
Hardee	373	921	2.5
Highlands	896	2,551	2.8
Polk	7,475	20,535	2.7
Circuit 11	16,979	35,642	2.1
Miami-Dade	16,979	35,642	2.1
Circuit 12	6,290	12,641	2.0
Desoto	459	913	2.0
Manatee	2,798	5,819	2.1
Sarasota	3,033	5,909	1.9
Circuit 13	11,991	26,403	2.2
Hillsborough	11,991	26,403	2.2
Circuit 14	4,839	9,245	1.9
Bay	3,068	5,721	1.9
Calhoun	250	561	2.2
Gulf	221	379	1.7
Holmes	389	820	2.1
Jackson	473	1,036	2.2
Washington	438	728	1.7
Circuit 15	8,718	17,441	2.0
Palm Beach	8,718	17,441	2.0
Circuit 16	1,883	3,845	2.0
Monroe	1,883	3,845	2.0

CIRCUIT CRIMINAL CHARGES (COUNTS)
by Circuit/County
FY 2013-14

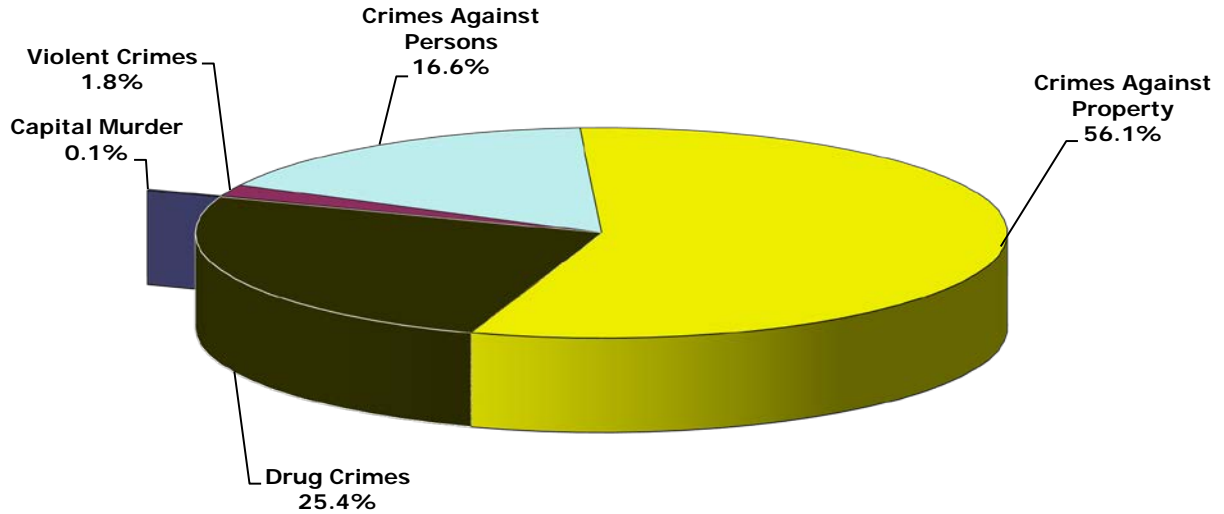
Circuit/County	Total Filings (Defendants)	Total Charges (Counts)	Number of Charges (Counts) per Filing
Circuit 17	14,849	31,599	2.1
Broward	14,849	31,599	2.1
Circuit 18	9,079	20,575	2.3
Brevard	6,023	14,389	2.4
Seminole	3,056	6,186	2.0
Circuit 19	5,879	15,119	2.6
Indian River	1,515	3,138	2.1
Martin	1,411	3,831	2.7
Okeechobee	614	1,581	2.6
St. Lucie	2,339	6,569	2.8
Circuit 20	8,501	19,007	2.2
Charlotte	2,065	5,144	2.5
Collier	1,473	3,477	2.4
Glades	161	284	1.8
Hendry	390	753	1.9
Lee	4,412	9,349	2.1
Total	176,768	375,956	2.1

Circuit Criminal ♦ Dispositions

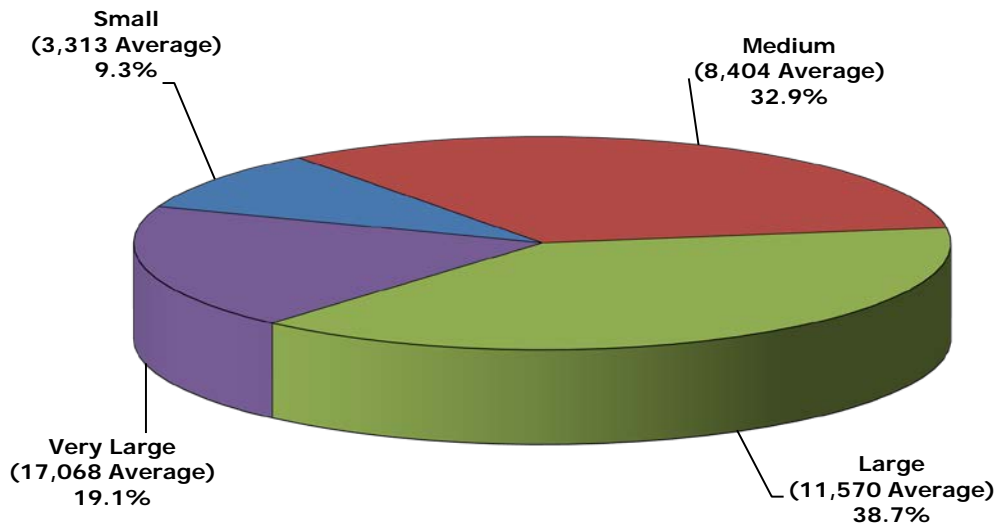
CIRCUIT CRIMINAL DISPOSITIONS
Statewide by Category/Case Type and Month
FY 2013-14

Category/ Case Type	Jul	Aug	Sep	Oct	Nov	Dec	Jan	Feb	Mar	Apr	May	Jun	Total
A. Capital Murder	14	19	17	27	21	23	21	27	18	19	28	19	253
1. Capital Murder	14	19	17	27	21	23	21	27	18	19	28	19	253
B. Violent Crimes	282	276	285	322	267	221	273	274	266	292	273	252	3,283
1. Non-Capital Murder	114	103	64	109	79	75	104	76	90	70	73	72	1,029
2. Sexual Offenses	168	173	221	213	188	146	169	198	176	222	200	180	2,254
C. Crimes Against Persons	2,547	2,592	2,554	2,634	2,248	2,170	2,457	2,523	2,504	2,628	2,542	2,323	29,722
1. Robbery	382	396	397	383	333	355	341	360	368	401	385	335	4,436
2. Other Crimes Against Persons	2,165	2,196	2,157	2,251	1,915	1,815	2,116	2,163	2,136	2,227	2,157	1,988	25,286
D. Crimes Against Property	8,844	8,523	8,221	9,323	7,487	7,204	8,414	8,043	8,645	8,946	8,453	8,211	100,314
1. Burglary	1,706	1,608	1,533	1,772	1,378	1,308	1,549	1,483	1,521	1,521	1,466	1,408	18,253
2. Theft, Forgery, Fraud	4,090	4,036	3,936	4,414	3,472	3,482	3,918	3,821	4,229	4,396	4,033	3,921	47,748
3. Worthless Checks	92	88	98	188	107	124	171	107	106	193	174	269	1,717
4. Other Crimes Against Property	167	170	146	187	154	148	186	159	157	174	152	154	1,954
5. Other	2,789	2,621	2,508	2,762	2,376	2,142	2,590	2,473	2,632	2,662	2,628	2,459	30,642
E. Drug Crimes	3,923	3,773	3,728	4,447	3,401	3,222	3,883	3,724	3,798	3,968	3,772	3,734	45,373
1. Drugs	3,923	3,773	3,728	4,447	3,401	3,222	3,883	3,724	3,798	3,968	3,772	3,734	45,373
Total	15,610	15,183	14,805	16,753	13,424	12,840	15,048	14,591	15,231	15,853	15,068	14,539	178,945

CIRCUIT CRIMINAL DISPOSITIONS by Category FY 2013-14



CIRCUIT CRIMINAL DISPOSITIONS by Circuit Size* FY 2013-14



*Small Circuits - 2nd, 3rd, 8th, 14th, 16th;
Medium Circuits - 1st, 5th, 7th, 10th, 12th, 18th, 19th;
Large Circuits - 4th, 6th, 9th, 13th, 15th, 20th; and
Very Large Circuits - 11th, 17th (as defined in the Glossary).

Circuit Criminal ♦ Dispositions

CIRCUIT CRIMINAL DISPOSITIONS
by Circuit and Case Type
FY 2013-14

Circuit	Capital Murder	Non-Capital Murder	Sexual Offenses	Robbery	Other Crimes Against Persons	Burglary	Theft Forgery Fraud	Worthless Checks	Other Crimes Against Property	Drugs	Other	Total
1	16	31	177	192	2,031	1,461	2,830	302	105	2,192	2,459	11,796
2	6	40	83	146	855	435	1,270	162	59	796	748	4,600
3	6	5	28	33	338	240	467	18	24	279	379	1,817
4	17	115	217	335	1,331	1,261	3,388	137	72	2,425	1,456	10,754
5	6	31	156	137	1,377	911	2,502	69	90	2,315	1,458	9,052
6	34	64	126	267	1,928	1,368	4,123	269	146	4,401	2,341	15,067
7	14	23	118	173	1,232	1,055	2,454	155	98	2,396	1,161	8,879
8	5	19	66	77	603	382	992	37	25	1,090	663	3,959
9	37	112	213	443	1,636	1,289	3,728	16	146	3,606	2,107	13,333
10	16	49	125	149	1,545	938	2,248	88	113	1,342	2,381	8,994
11	19	215	177	737	2,889	1,794	4,659	37	136	4,939	2,775	18,377
12	3	33	102	121	731	375	2,070	24	60	1,838	923	6,280
13	15	53	78	406	1,881	1,410	4,124	180	129	3,221	1,858	13,355
14	2	20	46	58	718	369	1,012	30	58	1,204	1,515	5,032
15	18	52	68	327	1,102	997	2,225	34	59	2,475	933	8,290
16	1	5	7	24	242	88	240	17	17	381	133	1,155
17	12	67	150	463	2,168	1,701	3,673	14	134	4,475	2,901	15,758
18	13	29	107	141	1,092	806	2,204	91	359	1,779	1,397	8,018
19	7	24	94	62	689	487	1,453	28	46	1,655	1,262	5,807
20	6	42	116	145	898	886	2,086	9	78	2,564	1,792	8,622
Total	253	1,029	2,254	4,436	25,286	18,253	47,748	1,717	1,954	45,373	30,642	178,945

CIRCUIT CRIMINAL DISPOSITIONS
by Circuit/County and Category
FY 2013-14

Circuit/County	Capital Murder	Violent Crimes	Crimes Against Persons	Crimes Against Property	Drug Crimes	Total
Circuit 1	16	208	2,223	7,157	2,192	11,796
Escambia	12	102	1,337	4,341	1,181	6,973
Okaloosa	3	40	494	1,428	552	2,517
Santa Rosa	0	41	262	978	270	1,551
Walton	1	25	130	410	189	755
Circuit 2	6	123	1,001	2,674	796	4,600
Franklin	0	5	40	123	80	248
Gadsden	1	18	136	247	106	508
Jefferson	0	6	40	87	33	166
Leon	4	72	706	2,002	497	3,281
Liberty	0	14	29	46	27	116
Wakulla	1	8	50	169	53	281
Circuit 3	6	33	371	1,128	279	1,817
Columbia	1	6	109	413	27	556
Dixie	0	3	21	85	5	114
Hamilton	0	2	32	98	5	137
Lafayette	0	1	14	21	11	47
Madison	0	2	41	141	38	222
Suwannee	4	14	90	240	144	492
Taylor	1	5	64	130	49	249
Circuit 4	17	332	1,666	6,314	2,425	10,754
Clay	1	56	387	1,447	418	2,309
Duval	16	261	1,185	4,503	1,649	7,614
Nassau	0	15	94	364	358	831

Circuit Criminal ♦ Dispositions

CIRCUIT CRIMINAL DISPOSITIONS
by Circuit/County and Category
FY 2013-14

Circuit/County	Capital Murder	Violent Crimes	Crimes Against Persons	Crimes Against Property	Drug Crimes	Total
Circuit 5	6	187	1,514	5,030	2,315	9,052
Citrus	0	45	193	626	248	1,112
Hernando	0	29	286	1,130	463	1,908
Lake	1	22	467	1,174	584	2,248
Marion	5	79	489	1,816	834	3,223
Sumter	0	12	79	284	186	561
Circuit 6	34	190	2,195	8,247	4,401	15,067
Pasco	11	55	521	2,239	1,195	4,021
Pinellas	23	135	1,674	6,008	3,206	11,046
Circuit 7	14	141	1,405	4,923	2,396	8,879
Flagler	0	14	160	362	181	717
Putnam	0	22	104	540	275	941
St. Johns	7	31	231	703	304	1,276
Volusia	7	74	910	3,318	1,636	5,945
Circuit 8	5	85	680	2,099	1,090	3,959
Alachua	5	59	417	1,207	703	2,391
Baker	0	4	37	222	63	326
Bradford	0	8	92	293	155	548
Gilchrist	0	3	36	78	49	166
Levy	0	4	72	229	98	403
Union	0	7	26	70	22	125
Circuit 9	37	325	2,079	7,286	3,606	13,333
Orange	29	250	1,697	5,888	2,642	10,506
Osceola	8	75	382	1,398	964	2,827

**CIRCUIT CRIMINAL DISPOSITIONS
by Circuit/County and Category
FY 2013-14**

Circuit/County	Capital Murder	Violent Crimes	Crimes Against Persons	Crimes Against Property	Drug Crimes	Total
Circuit 10	16	174	1,694	5,768	1,342	8,994
Hardee	0	4	57	101	107	269
Highlands	1	18	159	545	98	821
Polk	15	152	1,478	5,122	1,137	7,904
Circuit 11	19	392	3,626	9,401	4,939	18,377
Miami-Dade	19	392	3,626	9,401	4,939	18,377
Circuit 12	3	135	852	3,452	1,838	6,280
Desoto	0	16	45	190	125	376
Manatee	0	73	439	1,776	634	2,922
Sarasota	3	46	368	1,486	1,079	2,982
Circuit 13	15	131	2,287	7,701	3,221	13,355
Hillsborough	15	131	2,287	7,701	3,221	13,355
Circuit 14	2	66	776	2,984	1,204	5,032
Bay	2	38	444	2,186	649	3,319
Calhoun	0	6	44	83	79	212
Gulf	0	3	30	84	23	140
Holmes	0	2	65	194	80	341
Jackson	0	10	119	272	151	552
Washington	0	7	74	165	222	468
Circuit 15	18	120	1,429	4,248	2,475	8,290
Palm Beach	18	120	1,429	4,248	2,475	8,290
Circuit 16	1	12	266	495	381	1,155
Monroe	1	12	266	495	381	1,155

Circuit Criminal ◆ Dispositions

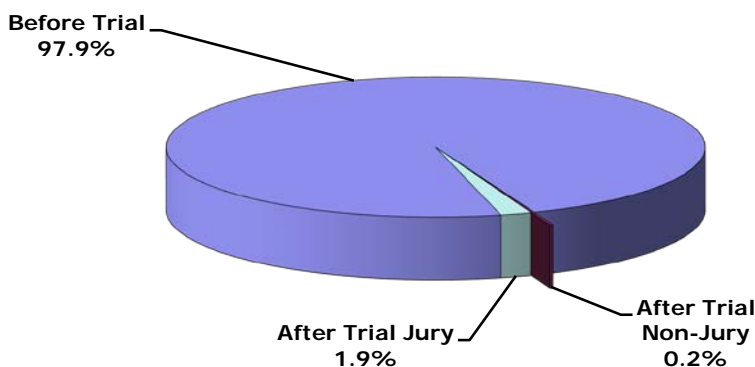
CIRCUIT CRIMINAL DISPOSITIONS
by Circuit/County and Category
FY 2013-14

Circuit/County	Capital Murder	Violent Crimes	Crimes Against Persons	Crimes Against Property	Drug Crimes	Total
Circuit 17	12	217	2,631	8,423	4,475	15,758
Broward	12	217	2,631	8,423	4,475	15,758
Circuit 18	13	136	1,233	4,857	1,779	8,018
Brevard	6	61	742	3,178	1,028	5,015
Seminole	7	75	491	1,679	751	3,003
Circuit 19	7	118	751	3,276	1,655	5,807
Indian River	3	46	196	1,065	289	1,599
Martin	0	19	110	611	555	1,295
Okeechobee	0	14	105	299	165	583
St. Lucie	4	39	340	1,301	646	2,330
Circuit 20	6	158	1,043	4,851	2,564	8,622
Charlotte	1	20	279	1,257	720	2,277
Collier	3	31	237	876	432	1,579
Glades	0	7	20	111	21	159
Hendry	0	5	41	147	59	252
Lee	2	95	466	2,460	1,332	4,355
Total	253	3,283	29,722	100,314	45,373	178,945

CIRCUIT CRIMINAL DISPOSITIONS
Statewide by Disposition Type and Case Type
FY 2013-14

Disposition Type	Capital Murder	Non-Capital Murder	Sexual Offenses	Robbery	Other Crimes Against Persons	Burglary	Theft Forgery Fraud	Worthless Checks	Other Crimes Against Property	Drugs	Other	Total
A. Before Trial	90	740	1,956	4,124	24,486	17,865	47,352	1,714	1,919	44,899	30,114	175,259
1. Speedy Trial	0	0	0	0	2	0	0	0	0	0	1	3
2. Dismissed	20	97	300	428	2,897	1,286	3,794	676	215	4,184	1,785	15,682
3. Transferred	2	2	31	54	1,387	345	724	8	115	694	4,867	8,229
4. Plea	50	595	1,493	3,438	17,523	15,223	36,478	618	1,396	36,111	22,452	135,377
5. Other*	18	46	132	204	2,677	1,011	6,356	412	193	3,910	1,009	15,968
B. After Trial Non-Jury	0	4	9	10	54	36	82	2	5	62	78	342
1. Acquittal/Dismissal	0	4	1	3	19	4	10	0	3	2	14	60
2. Plea	0	0	3	4	23	29	65	2	2	55	46	229
3. Conviction	0	0	5	3	12	3	7	0	0	5	18	53
C. After Trial Jury	163	285	289	302	746	352	314	1	30	412	450	3,344
1. Acquittal/Dismissal	11	51	77	74	262	76	87	0	11	105	98	852
2. Plea	4	10	13	20	39	29	40	0	2	42	47	246
3. Conviction	148	224	199	208	445	247	187	1	17	265	305	2,246
Total	253	1,029	2,254	4,436	25,286	18,253	47,748	1,717	1,954	45,373	30,642	178,945

CIRCUIT CRIMINAL DISPOSITIONS
by Disposition Type
FY 2013-14



*The disposition type "Other" is used to report cases disposed for: defendants placed on deferred prosecution or other pretrial diversion or probation programs approved after an information or an indictment is filed, defendants declared mentally or physically unable to stand trial, cases disposed upon estreatment of a bond, cases that are nolle prosequi (no further prosecution) for administrative reasons, or similar matters.

Circuit Criminal ♦ Dispositions

CIRCUIT CRIMINAL JURY TRIAL DISPOSITIONS
by Circuit
FY 2013-14

Circuit (Circuit Seat)	Acquittals/Dismissals	Pleas	Convictions	Total
First (Pensacola)	35	8	96	139
Second (Tallahassee)	54	2	133	189
Third (Lake City)	6	0	19	25
Fourth (Jacksonville)	28	16	176	220
Fifth (Tavares)	39	2	57	98
Sixth (Clearwater)	52	8	166	226
Seventh (Daytona Beach)	23	8	97	128
Eighth (Gainesville)	16	13	58	87
Ninth (Orlando)	105	4	203	312
Tenth (Bartow)	97	1	209	307
Eleventh (Miami-Dade)	82	47	180	309
Twelfth (Sarasota)	18	4	84	106
Thirteenth (Tampa)	57	33	222	312
Fourteenth (Panama City)	5	4	28	37
Fifteenth (West Palm Beach)	42	24	118	184
Sixteenth (Key West)	3	3	5	11
Seventeenth (Ft. Lauderdale)	109	30	117	256
Eighteenth (Sanford)	21	23	68	112
Nineteenth (Ft. Pierce)	22	4	99	125
Twentieth (Ft. Myers)	38	12	111	161
Total	852	246	2,246	3,344

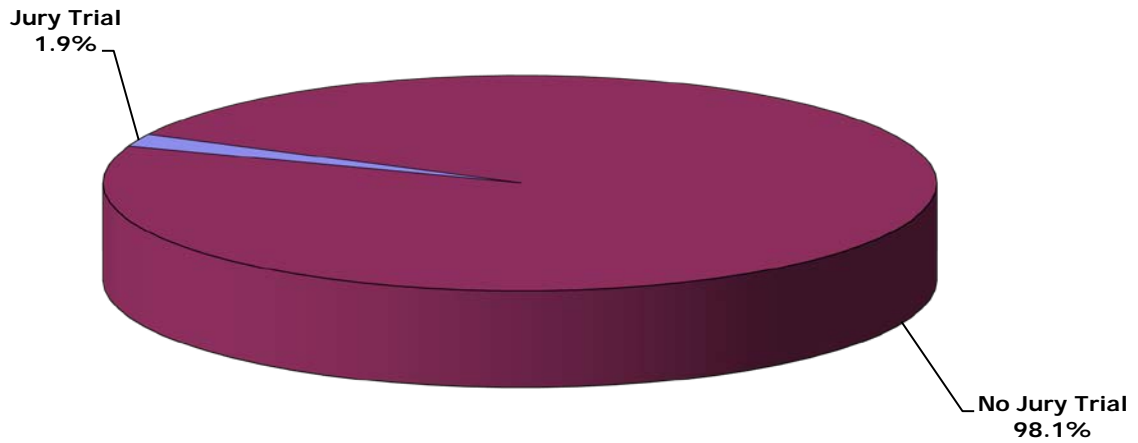
**CIRCUIT CRIMINAL JURY TRIAL and
GUILTY DISPOSITION RATES*
by Circuit
FY 2013-14**

Circuit (Circuit Seat)	Jury Trials (includes Acquittal/ Dismissal, Pleas, and Convictions)	Total Dispositions	Jury Trial Rates	Guilty Dispositions (includes Pleas and Convictions)	Total Dispositions (excludes Transferred and Other)	Guilty Disposition Rates
First (Pensacola)	139	11,796	1.2%	9,099	10,910	83.4%
Second (Tallahassee)	189	4,600	4.1%	3,665	4,281	85.6%
Third (Lake City)	25	1,817	1.4%	1,334	1,533	87.0%
Fourth (Jacksonville)	220	10,754	2.0%	9,259	9,811	94.4%
Fifth (Tavares)	98	9,052	1.1%	7,440	8,414	88.4%
Sixth (Clearwater)	226	15,067	1.5%	12,424	13,037	95.3%
Seventh (Daytona Beach)	128	8,879	1.4%	7,511	8,148	92.2%
Eighth (Gainesville)	87	3,959	2.2%	2,973	3,384	87.9%
Ninth (Orlando)	312	13,333	2.3%	9,482	12,310	77.0%
Tenth (Bartow)	307	8,994	3.4%	7,157	7,865	91.0%
Eleventh (Miami-Dade)	309	18,377	1.7%	13,300	14,318	92.9%
Twelfth (Sarasota)	106	6,280	1.7%	5,143	5,699	90.2%
Thirteenth (Tampa)	312	13,355	2.3%	9,794	11,347	86.3%
Fourteenth (Panama City)	37	5,032	0.7%	3,310	3,801	87.1%
Fifteenth (West Palm Beach)	184	8,290	2.2%	6,814	7,531	90.5%
Sixteenth (Key West)	11	1,155	1.0%	788	881	89.4%
Seventeenth (Ft. Lauderdale)	256	15,758	1.6%	10,781	11,430	94.3%
Eighteenth (Sanford)	112	8,018	1.4%	6,414	6,783	94.6%
Nineteenth (Ft. Pierce)	125	5,807	2.2%	4,719	5,348	88.2%
Twentieth (Ft. Myers)	161	8,622	1.9%	6,744	7,917	85.2%
Total	3,344	178,945	1.9%	138,151	154,748	89.3%

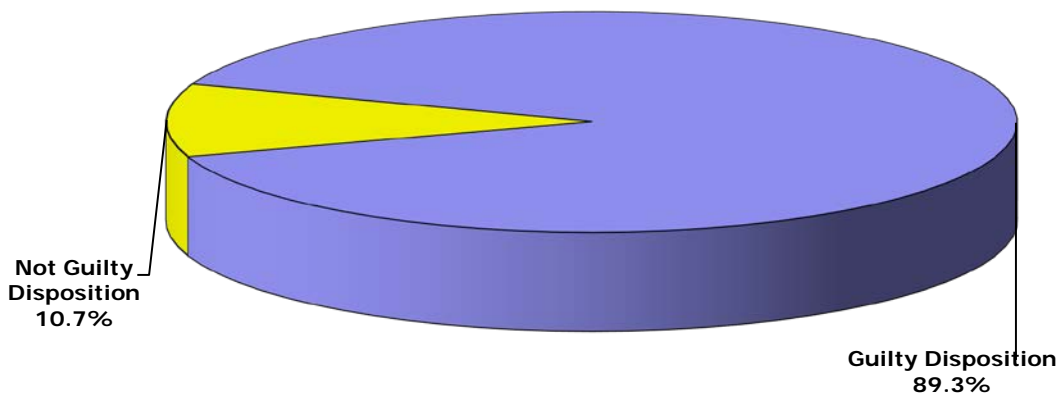
*Jury trial and guilty disposition rates are not intended as a measure of efficiency of the judiciary, state attorneys, or public defenders.

Circuit Criminal ♦ Dispositions

CIRCUIT CRIMINAL JURY TRIAL RATE
FY 2013-14



CIRCUIT CRIMINAL GUILTY DISPOSITION RATE
FY 2013-14



The Circuit Criminal division also includes other statistics such as clearance rates, reopenings, no files, appeals filed from county court, post conviction relief motions, probation revocation hearings, bond hearings, and adversary preliminary hearings. **These data are provided by the 67 clerks of court. However, dispositions and special proceedings data are not audited for accuracy by the OSCA.**

Clearance Rates - The clearance rate is a useful measure of the responsiveness of a court to the demand for services, and is nationally recognized as a measure of court performance. The rate is determined by dividing the total number of cases *disposed* by the total number of cases *filed* during a specific time period. If a court received 1,000 new cases a month and disposed of 900 cases within the same month, the clearance rate for that month would be 90%. A 100% clearance rate means that a court is disposing of at least as many cases as have been filed during the reporting period. Thus, where clearance rates exceed 100%, those circuits are actually disposing of cases more quickly than cases are being filed for the period in question.

Reopenings - A reopening occurs when a case that has previously been reported as disposed is resubmitted to the court through a motion or petition.

No Files - A no file occurs when all charges against a defendant are dropped and the prosecutor did not file an information or seek an indictment.

Appeals Filed From County Court - An appeal filed from county court is a request that a case be removed from the county court and sent to the circuit court for review.

Post Conviction Relief Motions - A post conviction relief motion is a motion to vacate, set aside, or correct a sentence pursuant to rule 3.850, Florida Rules of Criminal Procedure.

Probation Revocation Hearings - A probation revocation hearing is a proceeding in which a judge determines whether a defendant's probation should be modified or revoked following an alleged violation.

Bond Hearings - A bond hearing is a proceeding in which a judge considers a defendant's pretrial release status for the purpose of setting or modifying bond or other pretrial release status.

Adversary Preliminary Hearings - An adversary preliminary hearing is a proceeding in which a judge considers evidence presented to determine whether there is sufficient cause to hold the accused for trial.

Circuit Criminal ◆ Other Statistics

CIRCUIT CRIMINAL CLEARANCE RATES
by Circuit
FY 2013-14

Circuit	Filings	Dispositions	Clearance Rates
1	11,362	11,796	103.8%
2	4,459	4,600	103.2%
3	2,270	1,817	80.0%
4	9,956	10,754	108.0%
5	9,508	9,052	95.2%
6	14,776	15,067	102.0%
7	8,421	8,879	105.4%
8	4,373	3,959	90.5%
9	13,891	13,333	96.0%
10	8,744	8,994	102.9%
11	16,979	18,377	108.2%
12	6,290	6,280	99.8%
13	11,991	13,355	111.4%
14	4,839	5,032	104.0%
15	8,718	8,290	95.1%
16	1,883	1,155	61.3%
17	14,849	15,758	106.1%
18	9,079	8,018	88.3%
19	5,879	5,807	98.8%
20	8,501	8,622	101.4%
Total	176,768	178,945	101.2%

CIRCUIT CRIMINAL SPECIAL PROCEEDINGS
by Circuit
FY 2013-14

Circuit	Reopenings	No Files	Appeal Filed From County Court	Post Conviction Relief Motions	Probation Revocation Hearings	Bond Hearings	Adversary Preliminary Hearings	Total
1	7,262	954	17	825	4,234	447	0	13,739
2	2,585	272	11	380	1,640	49	0	4,937
3	972	352	0	207	1,697	1	0	3,229
4	3,947	4,844	37	848	1,706	402	9	11,793
5	7,734	2,614	25	424	4,081	229	0	15,107
6	2,387	4,048	81	626	6,566	13,780	1	27,489
7	2,218	3,996	16	269	4,319	321	2	11,141
8	2,272	1,980	26	175	2,137	1,209	0	7,799
9	5,365	4,842	13	268	3,393	532	9	14,422
10	5,168	1,671	64	1,238	5,201	759	99	14,200
11	1,188	10,457	50	3,478	6,233	6,919	5	28,330
12	5,696	2,176	8	507	3,153	800	29	12,369
13	8,218	2,204	22	244	8,590	3,172	574	23,024
14	892	659	0	123	2,695	295	0	4,664
15	4,729	4,723	49	642	2,130	1,763	43	14,079
16	74	3	0	0	472	127	0	676
17	1,291	1,895	0	1,317	2,146	1,712	17	8,378
18	5,446	1,521	50	274	5,167	2,605	0	15,063
19	2,578	2,038	13	132	1,434	416	0	6,611
20	5,568	2,654	5	649	3,936	808	1	13,621
Total	75,590	53,903	487	12,626	70,930	36,346	789	250,671