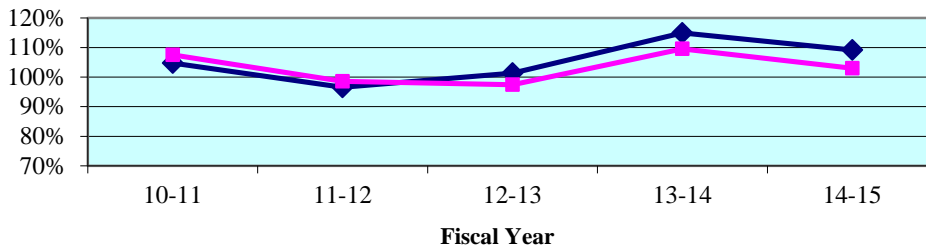


Clearance Rate -

The clearance rate is an indicator of whether a court is "keeping up" with its incoming caseload. The rate is determined by dividing the total number of cases *disposed* by the total number of cases *filed* during a specific time period. For example, if a court received 1,000 new cases a month and disposed of 900 cases during the same month, the clearance rate for that month is 90 percent. If a court's clearance rate is continually less than 100 percent over an extended period of time, the court will develop a backlog.

Clearance rates statistically tend to be more volatile when measured over shorter time periods. They should be compared over a period of five or more years to identify trends. There are many factors that can affect a court's clearance rate, including the number of filings, judicial assignment practices, case management resources and practices, trial rates, and reporting errors. Court managers may want to investigate these factors to identify the source(s) of a questionable clearance rate point or trend.

Circuit Court - 5 Year Trend*

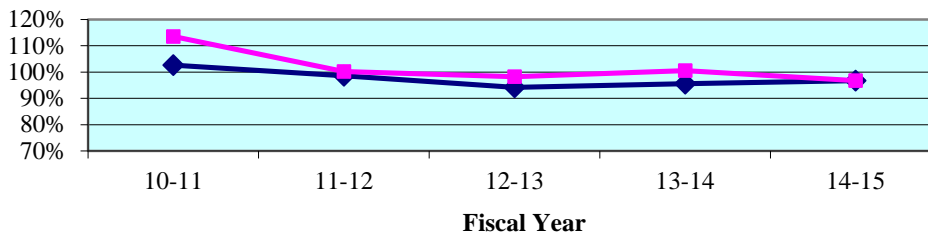


Circuit Court - Quarterly Data*

Quarterly Clearance Rates	Apr - Jun 2015	Jul - Sep 2015	Oct - Dec 2015	Jan - Mar 2016
First Circuit	100.2%	95.8%	96.2%	90.9%
State Median	103.5%	97.7%	99.7%	98.8%

*Termination of Parental Rights petitions are included in calculations from January 2010 forward.

County Court - 5 Year Trend**



County Court - Quarterly Data**

Quarterly Clearance Rates	Apr - Jun 2015	Jul - Sep 2015	Oct - Dec 2015	Jan - Mar 2016
First Circuit	103.8%	97.6%	89.1%	99.4%
State Median	96.4%	98.8%	98.3%	98.7%

**Traffic data is not included in calculations

Legend:	Circuit	◆	State Median	■
----------------	----------------	-------------------------------------	---------------------	--

Note: Fiscal years 2010-11 to 2014-15 and quarterly data for Apr-Jun 2015 were extracted from a static data base and represent the official trial court statistics. Quarterly data for Jul-Sep 2015, Oct-Dec 2014, and Jan-Mar 2016 were extracted from a dynamic data base and may be amended by the Clerk of Court.

**Circuit Court
By Division**



* Family Court includes Domestic Relations, Juvenile Delinquency, Juvenile Dependency, and Termination of Parental Rights from January 2010 forward.

Legend:	Circuit	■	Circuit Median	◆
----------------	---------	---	----------------	---

Note: Fiscal years 2010-11 to 2014-15 and quarterly data for Apr-Jun 2015 were extracted from a static data base and represent the official trial court statistics. Quarterly data for Jul-Sep 2015, Oct-Dec 2014, and Jan-Mar 2016 were extracted from a dynamic data base and may be amended by the Clerk of Court.

**Circuit Court
By Category**

SRS Case Type	FY 2010-11	FY 2011-12	FY 2012-13	FY 2013-14	FY 2014-15
Capital Murder	94.7%	58.3%	89.5%	84.2%	105.9%
Non Capital Murder	152.2%	93.5%	100.0%	81.6%	73.8%
Sexual Offenses	70.2%	69.3%	90.1%	86.8%	60.6%
Robbery	89.7%	71.5%	90.9%	96.5%	83.4%
Other Crimes Against Persons	95.5%	90.7%	92.5%	96.1%	96.5%
Burglary	104.4%	81.3%	76.6%	96.4%	93.9%
Theft, Forgery, Fraud	108.1%	88.1%	101.8%	100.7%	97.5%
Worthless Checks	163.3%	317.1%	92.1%	211.2%	177.6%
Other Crimes Against Property	128.6%	92.7%	107.3%	109.4%	122.9%
Drugs	101.2%	83.3%	88.4%	99.1%	93.5%
Other Felony Crimes	117.8%	126.9%	107.3%	122.2%	123.0%
Simplified Dissolution	102.2%	99.2%	93.2%	99.3%	102.1%
Dissolution	92.8%	102.2%	106.6%	100.2%	99.1%
Child Support	120.5%	112.8%	100.7%	170.3%	104.7%
UIFSA	107.3%	102.2%	82.7%	144.6%	131.9%
Other Domestic Relations	97.6%	102.5%	100.6%	96.0%	97.7%
Domestic Violence	94.6%	99.0%	100.0%	92.1%	98.6%
Repeat Violence	95.7%	97.9%	98.2%	94.0%	100.7%
Juvenile Delinquency	98.7%	89.9%	91.8%	98.4%	110.3%
Juvenile Dependency*	76.7%	89.0%	74.3%	74.2%	65.1%
Professional Malpractice	98.3%	97.2%	79.2%	80.7%	120.6%
Products Liability	820.0%	480.0%	163.2%	157.9%	194.4%
Auto Negligence	97.6%	90.3%	77.8%	95.2%	92.3%
Other Negligence	91.1%	78.3%	84.8%	105.3%	97.1%
Condominium	61.1%	244.4%	250.0%	75.0%	10.2%
Contract and Indebtedness	124.6%	116.9%	109.2%	113.5%	113.7%
Real Property/Mortgage Foreclosure	155.1%	76.3%	107.1%	197.2%	156.9%
Eminent Domain	590.0%	600.0%	25.0%	56.1%	69.0%
Other Circuit Civil	129.9%	91.8%	89.1%	98.3%	80.1%
Probate	99.2%	104.4%	94.6%	91.3%	91.8%
Guardianship	91.9%	101.5%	85.4%	86.3%	87.6%
Trust	120.0%	62.7%	26.9%	62.7%	100.0%
Baker Act	84.5%	167.8%	94.3%	93.0%	93.9%
Substance Abuse	96.6%	100.4%	97.3%	98.8%	99.0%
Other Social	77.8%	85.5%	71.9%	77.9%	83.9%

* Juvenile Dependency includes Termination of Parental Rights from January 2010 forward.

Note: Fiscal years 2010-11 to 2014-15 and quarterly data for Apr-Jun 2015 were extracted from a static data base and represent the official trial court statistics. Quarterly data for Jul-Sep 2015, Oct-Dec 2014, and Jan-Mar 2016 were extracted from a dynamic data base and may be amended by the Clerk of Court.

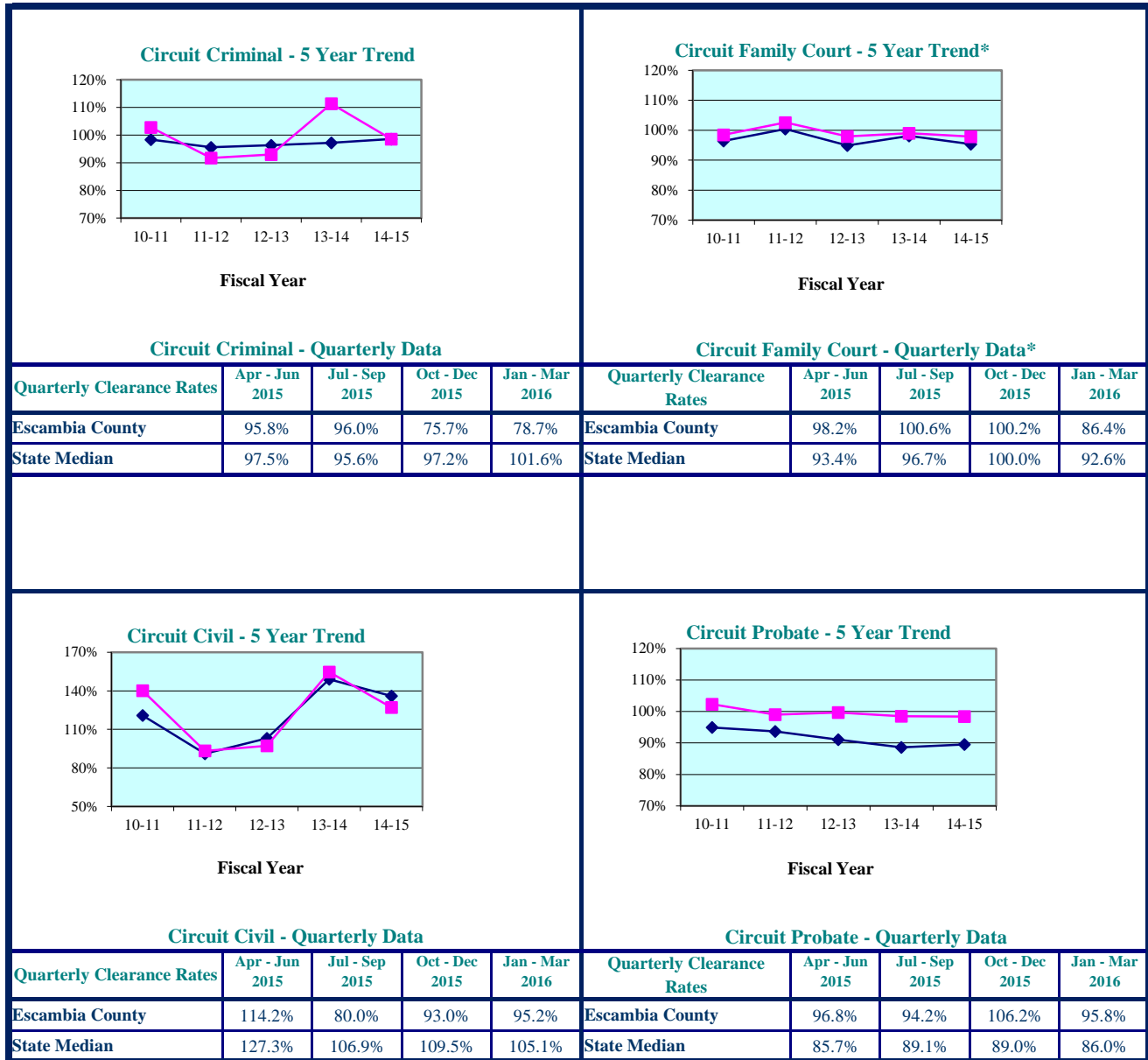
**Circuit Court
By Category**

SRS Case Type	Apr - Jun 2015	Jul - Sep 2015	Oct - Dec 2015	Jan - Mar 2016
Capital Murder	50.0%	40.0%	8.3%	83.3%
Non Capital Murder	100.0%	63.6%	70.6%	71.4%
Sexual Offenses	56.3%	108.3%	82.2%	47.9%
Robbery	69.1%	55.0%	40.0%	46.0%
Other Crimes Against Persons	93.0%	81.6%	83.3%	107.9%
Burglary	73.7%	79.0%	72.8%	74.0%
Theft, Forgery, Fraud	101.2%	103.0%	79.9%	93.3%
Worthless Checks	600.0%	38.1%	322.2%	85.7%
Other Crimes Against Property	168.0%	82.1%	78.4%	136.7%
Drugs	89.4%	87.1%	92.5%	77.7%
Other Felony Crimes	115.7%	135.1%	108.5%	111.0%
Simplified Dissolution	118.2%	93.2%	99.2%	80.9%
Dissolution	100.5%	107.6%	115.6%	85.9%
Child Support	63.3%	92.3%	80.2%	157.5%
UIFSA	108.3%	161.9%	96.8%	100.0%
Other Domestic Relations	89.3%	92.3%	87.5%	105.6%
Domestic Violence	98.6%	99.9%	109.7%	94.6%
Repeat Violence	101.2%	99.7%	102.0%	102.0%
Juvenile Delinquency	108.7%	105.6%	125.1%	94.0%
Juvenile Dependency*	63.0%	62.2%	71.4%	61.8%
Professional Malpractice	92.9%	414.3%	78.6%	50.0%
Products Liability	275.0%	250.0%	63.6%	57.1%
Auto Negligence	98.6%	89.4%	84.2%	92.6%
Other Negligence	76.1%	75.8%	98.0%	77.8%
Condominium	66.7%	250.0%	166.7%	50.0%
Contract and Indebtedness	154.9%	112.5%	106.9%	82.7%
Real Property/Mortgage Foreclosure	140.6%	99.6%	107.2%	93.0%
Eminent Domain	800.0%	120.0%	150.0%	83.3%
Other Circuit Civil	83.2%	66.7%	78.1%	89.2%
Probate	101.5%	86.2%	102.4%	89.6%
Guardianship	88.2%	70.1%	87.5%	83.6%
Trust	92.9%	82.4%	121.4%	100.0%
Baker Act	91.0%	96.8%	94.8%	78.2%
Substance Abuse	97.6%	95.1%	104.1%	90.4%
Other Social	68.3%	63.9%	78.0%	92.7%

* Juvenile Dependency includes Termination of Parental Rights from January 2010 forward.

Note: Fiscal years 2010-11 to 2014-15 and quarterly data for Apr-Jun 2015 were extracted from a static data base and represent the official trial court statistics. Quarterly data for Jul-Sep 2015, Oct-Dec 2014, and Jan-Mar 2016 were extracted from a dynamic data base and may be amended by the Clerk of Court.

**Circuit Court
By Division
Escambia County**



* Family Court includes Domestic Relations, Juvenile Delinquency, Juvenile Dependency, and Termination of Parental Rights from January 2010 forward.

Legend:	County	State Median
	■	◆

Note: Fiscal years 2010-11 to 2014-15 and quarterly data for Apr-Jun 2015 were extracted from a static data base and represent the official trial court statistics. Quarterly data for Jul-Sep 2015, Oct-Dec 2014, and Jan-Mar 2016 were extracted from a dynamic data base and may be amended by the Clerk of Court.

**Circuit Court
By Division
Okaloosa County**

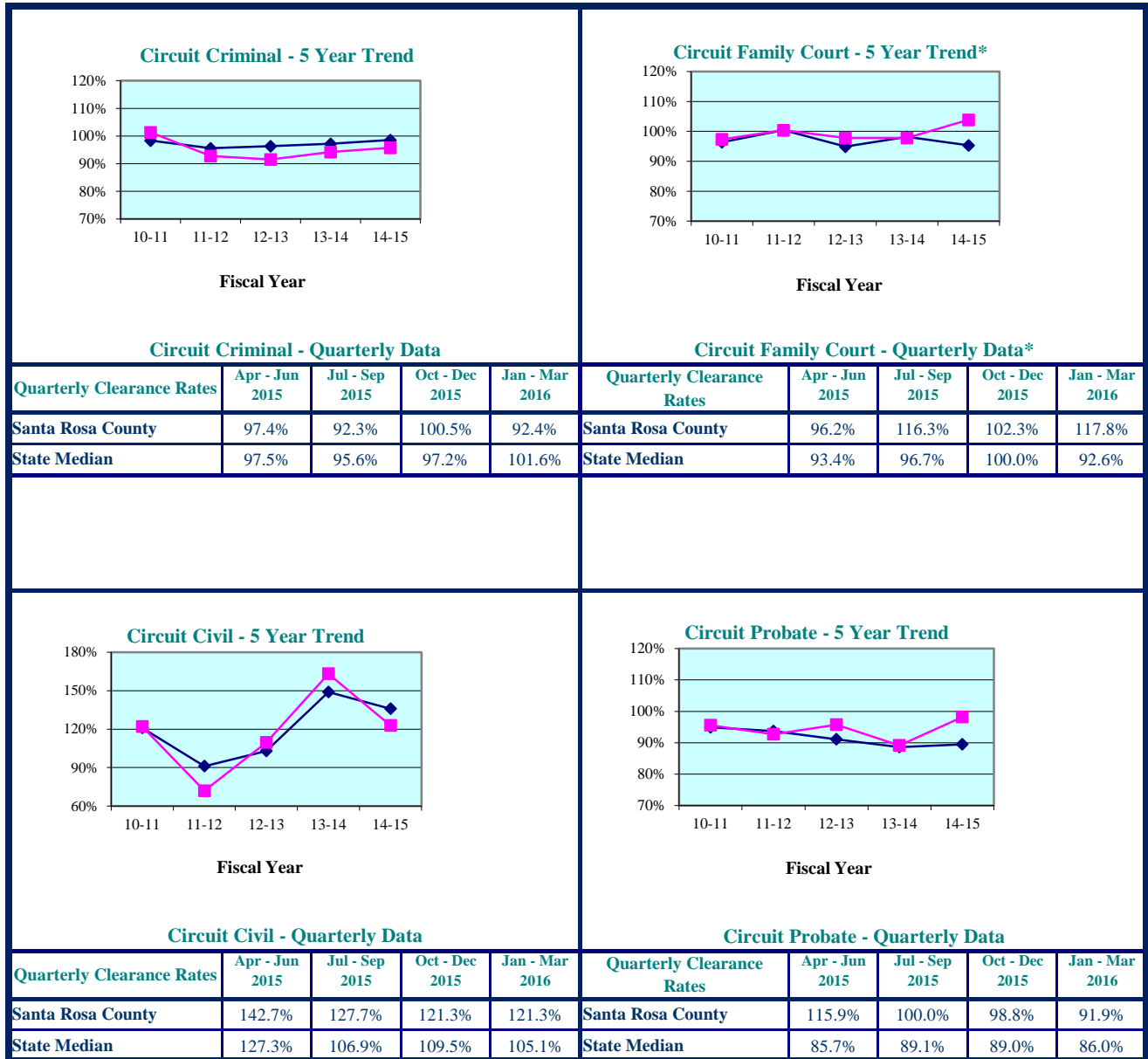
<p align="center">Circuit Criminal - 5 Year Trend</p>					<p align="center">Circuit Family Court - 5 Year Trend*</p>																																		
<p align="center">Circuit Criminal - Quarterly Data</p> <table border="1"> <thead> <tr> <th>Quarterly Clearance Rates</th> <th>Apr - Jun 2015</th> <th>Jul - Sep 2015</th> <th>Oct - Dec 2015</th> <th>Jan - Mar 2016</th> </tr> </thead> <tbody> <tr> <td>Okaloosa County</td> <td>91.6%</td> <td>96.6%</td> <td>91.4%</td> <td>116.5%</td> </tr> <tr> <td>State Median</td> <td>97.5%</td> <td>95.6%</td> <td>97.2%</td> <td>101.6%</td> </tr> </tbody> </table>					Quarterly Clearance Rates	Apr - Jun 2015	Jul - Sep 2015	Oct - Dec 2015	Jan - Mar 2016	Okaloosa County	91.6%	96.6%	91.4%	116.5%	State Median	97.5%	95.6%	97.2%	101.6%	<p align="center">Circuit Family Court - Quarterly Data*</p> <table border="1"> <thead> <tr> <th>Quarterly Clearance Rates</th> <th>Apr - Jun 2015</th> <th>Jul - Sep 2015</th> <th>Oct - Dec 2015</th> <th>Jan - Mar 2016</th> </tr> </thead> <tbody> <tr> <td>Okaloosa County</td> <td>93.9%</td> <td>88.8%</td> <td>110.7%</td> <td>98.0%</td> </tr> <tr> <td>State Median</td> <td>93.4%</td> <td>96.7%</td> <td>100.0%</td> <td>92.6%</td> </tr> </tbody> </table>					Quarterly Clearance Rates	Apr - Jun 2015	Jul - Sep 2015	Oct - Dec 2015	Jan - Mar 2016	Okaloosa County	93.9%	88.8%	110.7%	98.0%	State Median	93.4%	96.7%	100.0%	92.6%
Quarterly Clearance Rates	Apr - Jun 2015	Jul - Sep 2015	Oct - Dec 2015	Jan - Mar 2016																																			
Okaloosa County	91.6%	96.6%	91.4%	116.5%																																			
State Median	97.5%	95.6%	97.2%	101.6%																																			
Quarterly Clearance Rates	Apr - Jun 2015	Jul - Sep 2015	Oct - Dec 2015	Jan - Mar 2016																																			
Okaloosa County	93.9%	88.8%	110.7%	98.0%																																			
State Median	93.4%	96.7%	100.0%	92.6%																																			
<p align="center">Circuit Civil - 5 Year Trend</p>					<p align="center">Circuit Probate - 5 Year Trend</p>																																		
<p align="center">Circuit Civil - Quarterly Data</p> <table border="1"> <thead> <tr> <th>Quarterly Clearance Rates</th> <th>Apr - Jun 2015</th> <th>Jul - Sep 2015</th> <th>Oct - Dec 2015</th> <th>Jan - Mar 2016</th> </tr> </thead> <tbody> <tr> <td>Okaloosa County</td> <td>113.2%</td> <td>67.7%</td> <td>88.4%</td> <td>44.5%</td> </tr> <tr> <td>State Median</td> <td>127.3%</td> <td>106.9%</td> <td>109.5%</td> <td>105.1%</td> </tr> </tbody> </table>					Quarterly Clearance Rates	Apr - Jun 2015	Jul - Sep 2015	Oct - Dec 2015	Jan - Mar 2016	Okaloosa County	113.2%	67.7%	88.4%	44.5%	State Median	127.3%	106.9%	109.5%	105.1%	<p align="center">Circuit Probate - Quarterly Data</p> <table border="1"> <thead> <tr> <th>Quarterly Clearance Rates</th> <th>Apr - Jun 2015</th> <th>Jul - Sep 2015</th> <th>Oct - Dec 2015</th> <th>Jan - Mar 2016</th> </tr> </thead> <tbody> <tr> <td>Okaloosa County</td> <td>85.7%</td> <td>77.3%</td> <td>80.7%</td> <td>63.8%</td> </tr> <tr> <td>State Median</td> <td>85.7%</td> <td>89.1%</td> <td>89.0%</td> <td>86.0%</td> </tr> </tbody> </table>					Quarterly Clearance Rates	Apr - Jun 2015	Jul - Sep 2015	Oct - Dec 2015	Jan - Mar 2016	Okaloosa County	85.7%	77.3%	80.7%	63.8%	State Median	85.7%	89.1%	89.0%	86.0%
Quarterly Clearance Rates	Apr - Jun 2015	Jul - Sep 2015	Oct - Dec 2015	Jan - Mar 2016																																			
Okaloosa County	113.2%	67.7%	88.4%	44.5%																																			
State Median	127.3%	106.9%	109.5%	105.1%																																			
Quarterly Clearance Rates	Apr - Jun 2015	Jul - Sep 2015	Oct - Dec 2015	Jan - Mar 2016																																			
Okaloosa County	85.7%	77.3%	80.7%	63.8%																																			
State Median	85.7%	89.1%	89.0%	86.0%																																			

* Family Court includes Domestic Relations, Juvenile Delinquency, Juvenile Dependency, and Termination of Parental Rights from January 2010 forward.

Legend:	County	State Median
----------------	--------	--------------

Note: Fiscal years 2010-11 to 2014-15 and quarterly data for Apr-Jun 2015 were extracted from a static data base and represent the official trial court statistics. Quarterly data for Jul-Sep 2015, Oct-Dec 2014, and Jan-Mar 2016 were extracted from a dynamic data base and may be amended by the Clerk of Court.

**Circuit Court
By Division
Santa Rosa County**



* Family Court includes Domestic Relations, Juvenile Delinquency, Juvenile Dependency, and Termination of Parental Rights from January 2010 forward.

Legend:	County ■	State Median ◆
----------------	---	---

Note: Fiscal years 2010-11 to 2014-15 and quarterly data for Apr-Jun 2015 were extracted from a static data base and represent the official trial court statistics. Quarterly data for Jul-Sep 2015, Oct-Dec 2014, and Jan-Mar 2016 were extracted from a dynamic data base and may be amended by the Clerk of Court.

**Circuit Court
By Division
Walton County**

<p>Circuit Criminal - 5 Year Trend</p>					<p>Circuit Family Court - 5 Year Trend*</p>																																		
<p>Circuit Criminal - Quarterly Data</p> <table border="1"> <thead> <tr> <th>Quarterly Clearance Rates</th> <th>Apr - Jun 2015</th> <th>Jul - Sep 2015</th> <th>Oct - Dec 2015</th> <th>Jan - Mar 2016</th> </tr> </thead> <tbody> <tr> <td>Walton County</td> <td>96.4%</td> <td>82.4%</td> <td>104.3%</td> <td>94.0%</td> </tr> <tr> <td>State Median</td> <td>97.5%</td> <td>95.6%</td> <td>97.2%</td> <td>101.6%</td> </tr> </tbody> </table>					Quarterly Clearance Rates	Apr - Jun 2015	Jul - Sep 2015	Oct - Dec 2015	Jan - Mar 2016	Walton County	96.4%	82.4%	104.3%	94.0%	State Median	97.5%	95.6%	97.2%	101.6%	<p>Circuit Family Court - Quarterly Data*</p> <table border="1"> <thead> <tr> <th>Quarterly Clearance Rates</th> <th>Apr - Jun 2015</th> <th>Jul - Sep 2015</th> <th>Oct - Dec 2015</th> <th>Jan - Mar 2016</th> </tr> </thead> <tbody> <tr> <td>Walton County</td> <td>93.4%</td> <td>91.1%</td> <td>106.5%</td> <td>76.5%</td> </tr> <tr> <td>State Median</td> <td>93.4%</td> <td>96.7%</td> <td>100.0%</td> <td>92.6%</td> </tr> </tbody> </table>					Quarterly Clearance Rates	Apr - Jun 2015	Jul - Sep 2015	Oct - Dec 2015	Jan - Mar 2016	Walton County	93.4%	91.1%	106.5%	76.5%	State Median	93.4%	96.7%	100.0%	92.6%
Quarterly Clearance Rates	Apr - Jun 2015	Jul - Sep 2015	Oct - Dec 2015	Jan - Mar 2016																																			
Walton County	96.4%	82.4%	104.3%	94.0%																																			
State Median	97.5%	95.6%	97.2%	101.6%																																			
Quarterly Clearance Rates	Apr - Jun 2015	Jul - Sep 2015	Oct - Dec 2015	Jan - Mar 2016																																			
Walton County	93.4%	91.1%	106.5%	76.5%																																			
State Median	93.4%	96.7%	100.0%	92.6%																																			
<p>Circuit Civil - 5 Year Trend</p>					<p>Circuit Probate - 5 Year Trend</p>																																		
<p>Circuit Civil - Quarterly Data</p> <table border="1"> <thead> <tr> <th>Quarterly Clearance Rates</th> <th>Apr - Jun 2015</th> <th>Jul - Sep 2015</th> <th>Oct - Dec 2015</th> <th>Jan - Mar 2016</th> </tr> </thead> <tbody> <tr> <td>Walton County</td> <td>170.5%</td> <td>164.8%</td> <td>106.5%</td> <td>118.7%</td> </tr> <tr> <td>State Median</td> <td>127.3%</td> <td>106.9%</td> <td>109.5%</td> <td>105.1%</td> </tr> </tbody> </table>					Quarterly Clearance Rates	Apr - Jun 2015	Jul - Sep 2015	Oct - Dec 2015	Jan - Mar 2016	Walton County	170.5%	164.8%	106.5%	118.7%	State Median	127.3%	106.9%	109.5%	105.1%	<p>Circuit Probate - Quarterly Data</p> <table border="1"> <thead> <tr> <th>Quarterly Clearance Rates</th> <th>Apr - Jun 2015</th> <th>Jul - Sep 2015</th> <th>Oct - Dec 2015</th> <th>Jan - Mar 2016</th> </tr> </thead> <tbody> <tr> <td>Walton County</td> <td>72.5%</td> <td>75.3%</td> <td>86.9%</td> <td>81.2%</td> </tr> <tr> <td>State Median</td> <td>85.7%</td> <td>89.1%</td> <td>89.0%</td> <td>86.0%</td> </tr> </tbody> </table>					Quarterly Clearance Rates	Apr - Jun 2015	Jul - Sep 2015	Oct - Dec 2015	Jan - Mar 2016	Walton County	72.5%	75.3%	86.9%	81.2%	State Median	85.7%	89.1%	89.0%	86.0%
Quarterly Clearance Rates	Apr - Jun 2015	Jul - Sep 2015	Oct - Dec 2015	Jan - Mar 2016																																			
Walton County	170.5%	164.8%	106.5%	118.7%																																			
State Median	127.3%	106.9%	109.5%	105.1%																																			
Quarterly Clearance Rates	Apr - Jun 2015	Jul - Sep 2015	Oct - Dec 2015	Jan - Mar 2016																																			
Walton County	72.5%	75.3%	86.9%	81.2%																																			
State Median	85.7%	89.1%	89.0%	86.0%																																			

* Family Court includes Domestic Relations, Juvenile Delinquency, Juvenile Dependency, and Termination of Parental Rights from January 2010 forward.

Legend:	County	State Median
	■	◆

Note: Fiscal years 2010-11 to 2014-15 and quarterly data for Apr-Jun 2015 were extracted from a static data base and represent the official trial court statistics. Quarterly data for Jul-Sep 2015, Oct-Dec 2014, and Jan-Mar 2016 were extracted from a dynamic data base and may be amended by the Clerk of Court.

Escambia County

Okaloosa County



* Traffic data is not included in calculations.

Legend:	County	State Median
----------------	--------	--------------

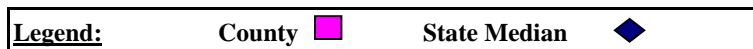
Note: Fiscal years 2010-11 to 2014-15 and quarterly data for Apr-Jun 2015 were extracted from a static data base and represent the official trial court statistics. Quarterly data for Jul-Sep 2015, Oct-Dec 2014, and Jan-Mar 2016 were extracted from a dynamic data base and may be amended by the Clerk of Court.

Santa Rosa County

Walton County



* Traffic data is not included in calculations.



Note: Fiscal years 2010-11 to 2014-15 and quarterly data for Apr-Jun 2015 were extracted from a static data base and represent the official trial court statistics. Quarterly data for Jul-Sep 2015, Oct-Dec 2014, and Jan-Mar 2016 were extracted from a dynamic data base and may be amended by the Clerk of Court.

**Escambia County
By Category**

SRS Case Type	FY 2010-11	FY 2011-12	FY 2012-13	FY 2013-14	FY 2014-15
Misdemeanors	98.3%	92.1%	100.1%	107.7%	101.5%
Worthless Checks	101.5%	107.5%	98.3%	145.3%	106.6%
County Ordinances	102.9%	98.1%	98.3%	91.3%	103.2%
Municipal Ordinances	79.8%	140.0%	70.2%	92.9%	116.7%
Small Claims (up to \$5,000)	125.2%	93.7%	86.2%	106.0%	83.6%
Civil (\$5,001-\$15,000)	146.0%	138.8%	101.8%	103.3%	98.3%
Replevins	157.1%	78.0%	46.3%	110.5%	64.0%
Evictions	135.8%	97.4%	89.4%	76.0%	101.5%
Other County Civil	428.6%	84.2%	42.9%	139.1%	123.8%

**Escambia County
By Category**

SRS Case Type	Apr - Jun 2015	Jul - Sep 2015	Oct - Dec 2015	Jan - Mar 2016
Misdemeanors	107.8%	91.9%	69.7%	97.4%
Worthless Checks	129.9%	91.3%	100.0%	98.3%
County Ordinances	111.8%	83.3%	53.8%	100.0%
Municipal Ordinances	150.0%	0.0%	80.0%	400.0%
Small Claims (up to \$5,000)	68.8%	118.6%	76.2%	94.0%
Civil (\$5,001-\$15,000)	129.7%	179.6%	107.2%	85.2%
Replevins	114.3%	169.2%	133.3%	60.0%
Evictions	165.9%	85.3%	113.4%	115.0%
Other County Civil	433.3%	77.8%	200.0%	57.1%

Notes:

1. Traffic data is not included in calculations.
2. Fiscal years 2010-11 to 2014-15 and quarterly data for Apr-Jun 2015 were extracted from a static data base and represent the official trial court statistics. Quarterly data for Jul-Sep 2015, Oct-Dec 2014, and Jan-Mar 2016 were extracted from a dynamic data base and may be amended by the Clerk of Court.

**Okaloosa County
By Category**

SRS Case Type	FY 2010-11	FY 2011-12	FY 2012-13	FY 2013-14	FY 2014-15
Misdemeanors	101.4%	109.6%	101.1%	100.8%	98.9%
Worthless Checks	153.0%	168.7%	117.8%	115.0%	128.4%
County Ordinances	0.0%	0.0%	0.0%	0.0%	0.0%
Municipal Ordinances	46.7%	100.0%	55.4%	13.0%	20.0%
Small Claims (up to \$5,000)	149.2%	114.5%	100.8%	97.4%	80.0%
Civil (\$5,001-\$15,000)	110.2%	140.2%	131.0%	117.5%	83.3%
Replevins	100.0%	178.6%	50.0%	93.1%	105.6%
Evictions	112.8%	110.0%	96.6%	96.8%	99.1%
Other County Civil	475.0%	290.9%	114.3%	85.7%	122.2%

**Okaloosa County
By Category**

SRS Case Type	Apr - Jun 2015	Jul - Sep 2015	Oct - Dec 2015	Jan - Mar 2016
Misdemeanors	107.1%	95.4%	108.6%	79.1%
Worthless Checks	140.7%	130.6%	88.6%	193.9%
County Ordinances	0.0%	0.0%	0.0%	0.0%
Municipal Ordinances	18.5%	13.3%	15.7%	27.3%
Small Claims (up to \$5,000)	74.4%	115.5%	91.5%	142.7%
Civil (\$5,001-\$15,000)	64.6%	90.1%	107.5%	118.8%
Replevins	200.0%	80.0%	166.7%	33.3%
Evictions	94.3%	91.6%	94.8%	109.7%
Other County Civil	0.0%	25.0%	13.6%	100.0%

Notes:

1. Traffic data is not included in calculations.
2. Fiscal years 2010-11 to 2014-15 and quarterly data for Apr-Jun 2015 were extracted from a static data base and represent the official trial court statistics. Quarterly data for Jul-Sep 2015, Oct-Dec 2014, and Jan-Mar 2016 were extracted from a dynamic data base and may be amended by the Clerk of Court.

**Santa Rosa County
By Category**

SRS Case Type	FY 2010-11	FY 2011-12	FY 2012-13	FY 2013-14	FY 2014-15
Misdemeanors	101.3%	100.8%	100.1%	99.4%	100.5%
Worthless Checks	100.0%	92.6%	107.8%	107.1%	96.0%
County Ordinances	103.9%	114.0%	91.6%	94.2%	106.3%
Municipal Ordinances	0.0%	0.0%	0.0%	100.0%	53.3%
Small Claims (up to \$5,000)	149.9%	41.1%	98.5%	112.2%	78.2%
Civil (\$5,001-\$15,000)	106.9%	68.5%	103.6%	114.2%	93.0%
Replevins	106.3%	100.0%	85.7%	91.7%	83.3%
Evictions	94.2%	53.8%	93.1%	97.6%	111.2%
Other County Civil	88.9%	116.7%	66.7%	75.0%	71.4%

**Santa Rosa County
By Category**

SRS Case Type	Apr - Jun 2015	Jul - Sep 2015	Oct - Dec 2015	Jan - Mar 2016
Misdemeanors	87.2%	91.4%	99.6%	108.1%
Worthless Checks	63.0%	90.3%	106.3%	133.3%
County Ordinances	101.2%	87.0%	105.3%	103.5%
Municipal Ordinances	50.0%	100.0%	0.0%	200.0%
Small Claims (up to \$5,000)	73.8%	84.0%	61.5%	105.2%
Civil (\$5,001-\$15,000)	72.6%	114.9%	94.0%	86.8%
Replevins	50.0%	150.0%	100.0%	300.0%
Evictions	103.5%	105.5%	115.7%	83.0%
Other County Civil	50.0%	0.0%	200.0%	100.0%

Notes:

1. Traffic data is not included in calculations.
2. Fiscal years 2010-11 to 2014-15 and quarterly data for Apr-Jun 2015 were extracted from a static data base and represent the official trial court statistics. Quarterly data for Jul-Sep 2015, Oct-Dec 2014, and Jan-Mar 2016 were extracted from a dynamic data base and may be amended by the Clerk of Court.

**Walton County
By Category**

SRS Case Type	FY 2010-11	FY 2011-12	FY 2012-13	FY 2013-14	FY 2014-15
Misdemeanors	102.9%	75.2%	92.1%	98.0%	97.7%
Worthless Checks	122.3%	126.1%	71.8%	120.4%	171.0%
County Ordinances	85.9%	88.8%	88.1%	85.7%	90.2%
Municipal Ordinances	100.0%	60.0%	100.0%	0.0%	0.0%
Small Claims (up to \$5,000)	157.1%	119.1%	115.2%	98.3%	92.5%
Civil (\$5,001-\$15,000)	108.3%	130.9%	133.5%	84.7%	131.9%
Replevins	70.0%	110.0%	84.6%	122.2%	100.0%
Evictions	91.7%	92.7%	98.9%	79.9%	113.3%
Other County Civil	25.0%	63.2%	112.5%	1,400.0%	0.0%

**Walton County
By Category**

SRS Case Type	Apr - Jun 2015	Jul - Sep 2015	Oct - Dec 2015	Jan - Mar 2016
Misdemeanors	197.7%	93.2%	128.7%	64.6%
Worthless Checks	950.0%	69.2%	66.7%	114.3%
County Ordinances	75.0%	84.1%	191.7%	213.8%
Municipal Ordinances	0.0%	0.0%	0.0%	0.0%
Small Claims (up to \$5,000)	99.3%	100.7%	82.3%	131.9%
Civil (\$5,001-\$15,000)	113.3%	134.3%	58.5%	147.6%
Replevins	0.0%	100.0%	50.0%	60.0%
Evictions	78.3%	95.2%	61.4%	130.8%
Other County Civil	0.0%	0.0%	0.0%	0.0%

Notes:

1. Traffic data is not included in calculations.
2. Fiscal years 2010-11 to 2014-15 and quarterly data for Apr-Jun 2015 were extracted from a static data base and represent the official trial court statistics. Quarterly data for Jul-Sep 2015, Oct-Dec 2014, and Jan-Mar 2016 were extracted from a dynamic data base and may be amended by the Clerk of Court.