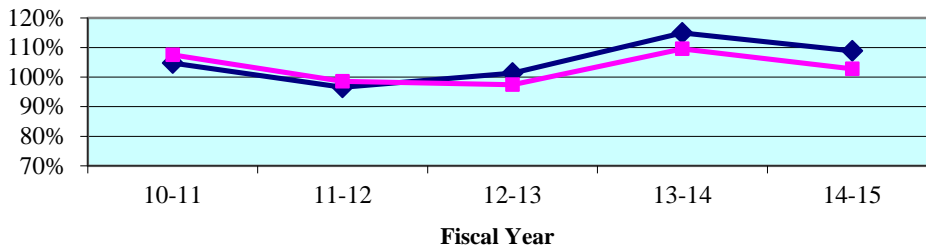


**Clearance Rate -**

The clearance rate is an indicator of whether a court is "keeping up" with its incoming caseload. The rate is determined by dividing the total number of cases *disposed* by the total number of cases *filed* during a specific time period. For example, if a court received 1,000 new cases a month and disposed of 900 cases during the same month, the clearance rate for that month is 90 percent. If a court's clearance rate is continually less than 100 percent over an extended period of time, the court will develop a backlog.

Clearance rates statistically tend to be more volatile when measured over shorter time periods. They should be compared over a period of five or more years to identify trends. There are many factors that can affect a court's clearance rate, including the number of filings, judicial assignment practices, case management resources and practices, trial rates, and reporting errors. Court managers may want to investigate these factors to identify the source(s) of a questionable clearance rate point or trend.

**Circuit Court - 5 Year Trend\***

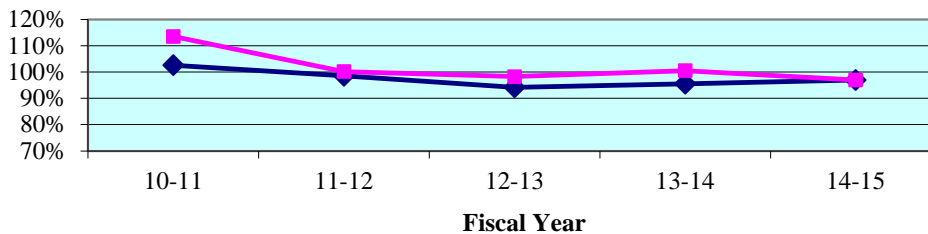


**Circuit Court - Quarterly Data\***

Quarterly Clearance Rates	Jul - Sep 2014	Oct - Dec 2014	Jan - Mar 2015	Apr - Jun 2015
First Circuit	106.9%	103.8%	100.4%	99.9%
State Median	109.7%	112.9%	103.8%	104.1%

\*Termination of Parental Rights petitions are included in calculations from January 2010 forward.

**County Court - 5 Year Trend\*\***



**County Court - Quarterly Data\*\***

Quarterly Clearance Rates	Jul - Sep 2014	Oct - Dec 2014	Jan - Mar 2015	Apr - Jun 2015
First Circuit	96.3%	107.3%	80.8%	104.4%
State Median	95.8%	97.6%	93.8%	96.2%

\*\*Traffic data is not included in calculations

<b>Legend:</b>	<b>Circuit</b>		<b>State Median</b>	
----------------	----------------	--	---------------------	--

Note: Fiscal years 2010-11 to 2013-14 were extracted from a static data base and represent the official trial court statistics. Fiscal year 2014-15 and quarterly data for Jul-Sep 2014, Oct-Dec 2014, Jan-Mar 2015, Apr-Jun 2015 were extracted from a dynamic data base and may be amended by the Clerk of Court.

**Circuit Court  
By Division**



\* Family Court includes Domestic Relations, Juvenile Delinquency, Juvenile Dependency, and Termination of Parental Rights from January 2010 forward.

**Legend:**      Circuit ■      Circuit Median ◆

Note: Fiscal years 2010-11 to 2013-14 were extracted from a static data base and represent the official trial court statistics. Fiscal year 2014-15 and quarterly data for Jul-Sep 2014, Oct-Dec 2014, Jan-Mar 2015, Apr-Jun 2015 were extracted from a dynamic data base and may be amended by the Clerk of Court.

**Circuit Court  
By Category**

SRS Case Type	FY 2010-11	FY 2011-12	FY 2012-13	FY 2013-14	FY 2014-15
Capital Murder	94.7%	58.3%	89.5%	84.2%	100.0%
Non Capital Murder	152.2%	93.5%	100.0%	81.6%	75.6%
Sexual Offenses	70.2%	69.3%	90.1%	86.8%	60.6%
Robbery	89.7%	71.5%	90.9%	96.5%	83.0%
Other Crimes Against Persons	95.5%	90.7%	92.5%	96.1%	96.3%
Burglary	104.4%	81.3%	76.6%	96.4%	93.6%
Theft, Forgery, Fraud	108.1%	88.1%	101.8%	100.7%	97.6%
Worthless Checks	163.3%	317.1%	92.1%	211.2%	177.6%
Other Crimes Against Property	128.6%	92.7%	107.3%	109.4%	122.9%
Drugs	101.2%	83.3%	88.4%	99.1%	93.9%
Other Felony Crimes	117.8%	126.9%	107.3%	122.2%	123.0%
Simplified Dissolution	102.2%	99.2%	93.2%	99.3%	100.2%
Dissolution	92.8%	102.2%	106.6%	100.2%	99.0%
Child Support	120.5%	112.8%	100.7%	170.3%	104.7%
UIFSA	107.3%	102.2%	82.7%	144.6%	129.8%
Other Domestic Relations	97.6%	102.5%	100.6%	96.0%	97.9%
Domestic Violence	94.6%	99.0%	100.0%	92.1%	98.0%
Repeat Violence	95.7%	97.9%	98.2%	94.0%	98.2%
Juvenile Delinquency	98.7%	89.9%	91.8%	98.4%	110.3%
Juvenile Dependency*	76.7%	89.0%	74.3%	74.2%	65.2%
Professional Malpractice	98.3%	97.2%	79.2%	80.7%	120.6%
Products Liability	820.0%	480.0%	163.2%	157.9%	194.4%
Auto Negligence	97.6%	90.3%	77.8%	95.2%	92.3%
Other Negligence	91.1%	78.3%	84.8%	105.3%	97.1%
Condominium	61.1%	244.4%	250.0%	75.0%	10.2%
Contract and Indebtedness	124.6%	116.9%	109.2%	113.5%	113.7%
Real Property/Mortgage Foreclosure	155.1%	76.3%	107.1%	197.2%	156.9%
Eminent Domain	590.0%	600.0%	25.0%	56.1%	69.0%
Other Circuit Civil	129.9%	91.8%	89.1%	98.3%	80.1%
Probate	99.2%	104.4%	94.6%	91.3%	91.8%
Guardianship	91.9%	101.5%	85.4%	86.3%	87.6%
Trust	120.0%	62.7%	26.9%	62.7%	100.0%
Baker Act	84.5%	167.8%	94.3%	93.0%	93.9%
Substance Abuse	96.6%	100.4%	97.3%	98.8%	99.0%
Other Social	77.8%	85.5%	71.9%	77.9%	83.9%

\* Juvenile Dependency includes Termination of Parental Rights from January 2010 forward.

Note: Fiscal years 2010-11 to 2013-14 were extracted from a static data base and represent the official trial court statistics. Fiscal year 2014-15 and quarterly data for Jul-Sep 2014, Oct-Dec 2014, Jan-Mar 2015, Apr-Jun 2015 were extracted from a dynamic data base and may be amended by the Clerk of Court.

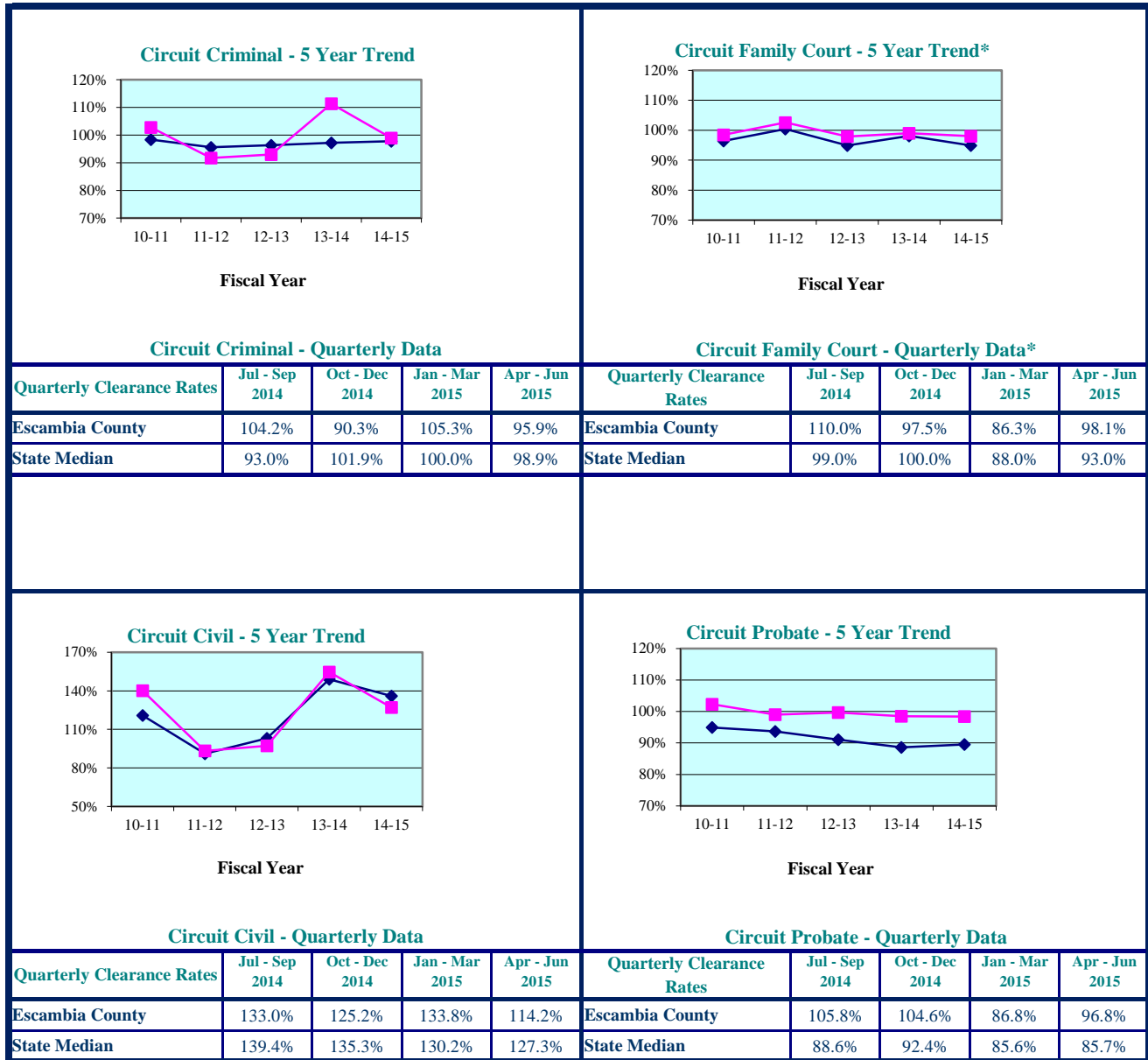
**Circuit Court  
By Category**

<b>SRS Case Type</b>	<b>Jul - Sep 2014</b>	<b>Oct - Dec 2014</b>	<b>Jan - Mar 2015</b>	<b>Apr - Jun 2015</b>
Capital Murder	75.0%	150.0%	166.7%	33.3%
Non Capital Murder	88.9%	60.0%	60.0%	114.3%
Sexual Offenses	56.9%	68.0%	61.9%	56.3%
Robbery	115.0%	58.3%	100.0%	69.1%
Other Crimes Against Persons	87.7%	97.8%	109.8%	92.0%
Burglary	131.3%	82.4%	82.7%	73.5%
Theft, Forgery, Fraud	98.6%	90.4%	100.4%	101.2%
Worthless Checks	252.9%	65.4%	238.5%	600.0%
Other Crimes Against Property	106.1%	211.1%	57.6%	168.0%
Drugs	90.2%	89.5%	108.2%	89.3%
Other Felony Crimes	113.3%	129.6%	138.6%	115.4%
Simplified Dissolution	100.7%	109.1%	82.5%	110.7%
Dissolution	97.5%	111.3%	88.3%	100.4%
Child Support	144.4%	109.3%	115.0%	63.6%
UIFSA	161.8%	144.4%	111.5%	105.6%
Other Domestic Relations	108.1%	95.5%	98.7%	89.5%
Domestic Violence	92.9%	107.8%	93.4%	98.3%
Repeat Violence	92.4%	103.6%	97.0%	100.0%
Juvenile Delinquency	122.8%	110.2%	101.0%	108.2%
Juvenile Dependency*	68.0%	63.8%	66.7%	63.0%
Professional Malpractice	142.9%	111.1%	200.0%	92.9%
Products Liability	400.0%	133.3%	133.3%	275.0%
Auto Negligence	79.3%	107.6%	86.5%	98.6%
Other Negligence	113.0%	86.8%	125.6%	76.1%
Condominium	4.4%	133.3%	75.0%	66.7%
Contract and Indebtedness	123.0%	100.5%	85.2%	154.9%
Real Property/Mortgage Foreclosure	196.9%	141.8%	146.9%	140.6%
Eminent Domain	16.0%	1,200.0%	33.3%	800.0%
Other Circuit Civil	73.8%	75.9%	88.3%	83.2%
Probate	91.4%	100.8%	75.2%	101.5%
Guardianship	71.9%	98.4%	92.3%	88.2%
Trust	108.3%	92.3%	107.7%	92.9%
Baker Act	101.4%	93.7%	89.9%	91.0%
Substance Abuse	92.9%	105.7%	102.2%	97.6%
Other Social	79.1%	93.6%	94.6%	68.3%

\* Juvenile Dependency includes Termination of Parental Rights from January 2010 forward.

Note: Fiscal years 2010-11 to 2013-14 were extracted from a static data base and represent the official trial court statistics. Fiscal year 2014-15 and quarterly data for Jul-Sep 2014, Oct-Dec 2014, Jan-Mar 2015, Apr-Jun 2015 were extracted from a dynamic data base and may be amended by the Clerk of Court.

**Circuit Court  
By Division  
Escambia County**

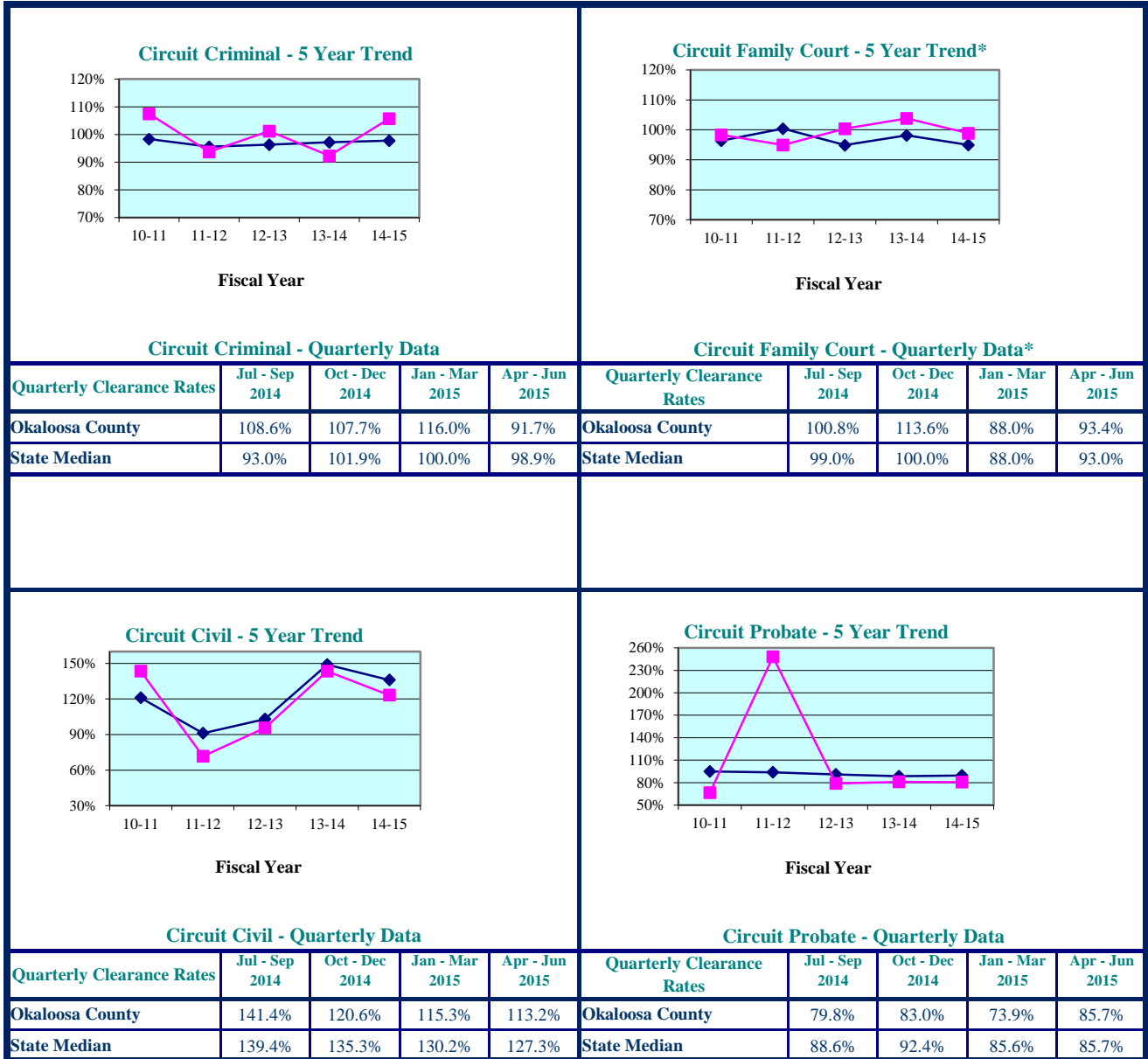


\* Family Court includes Domestic Relations, Juvenile Delinquency, Juvenile Dependency, and Termination of Parental Rights from January 2010 forward.

<b>Legend:</b>	<b>County</b> <span style="color: pink;">■</span>	<b>State Median</b> <span style="color: black;">◆</span>
----------------	---	--

Note: Fiscal years 2010-11 to 2013-14 were extracted from a static data base and represent the official trial court statistics. Fiscal year 2014-15 and quarterly data for Jul-Sep 2014, Oct-Dec 2014, Jan-Mar 2015, Apr-Jun 2015 were extracted from a dynamic data base and may be amended by the Clerk of Court.

**Circuit Court  
By Division  
Okaloosa County**

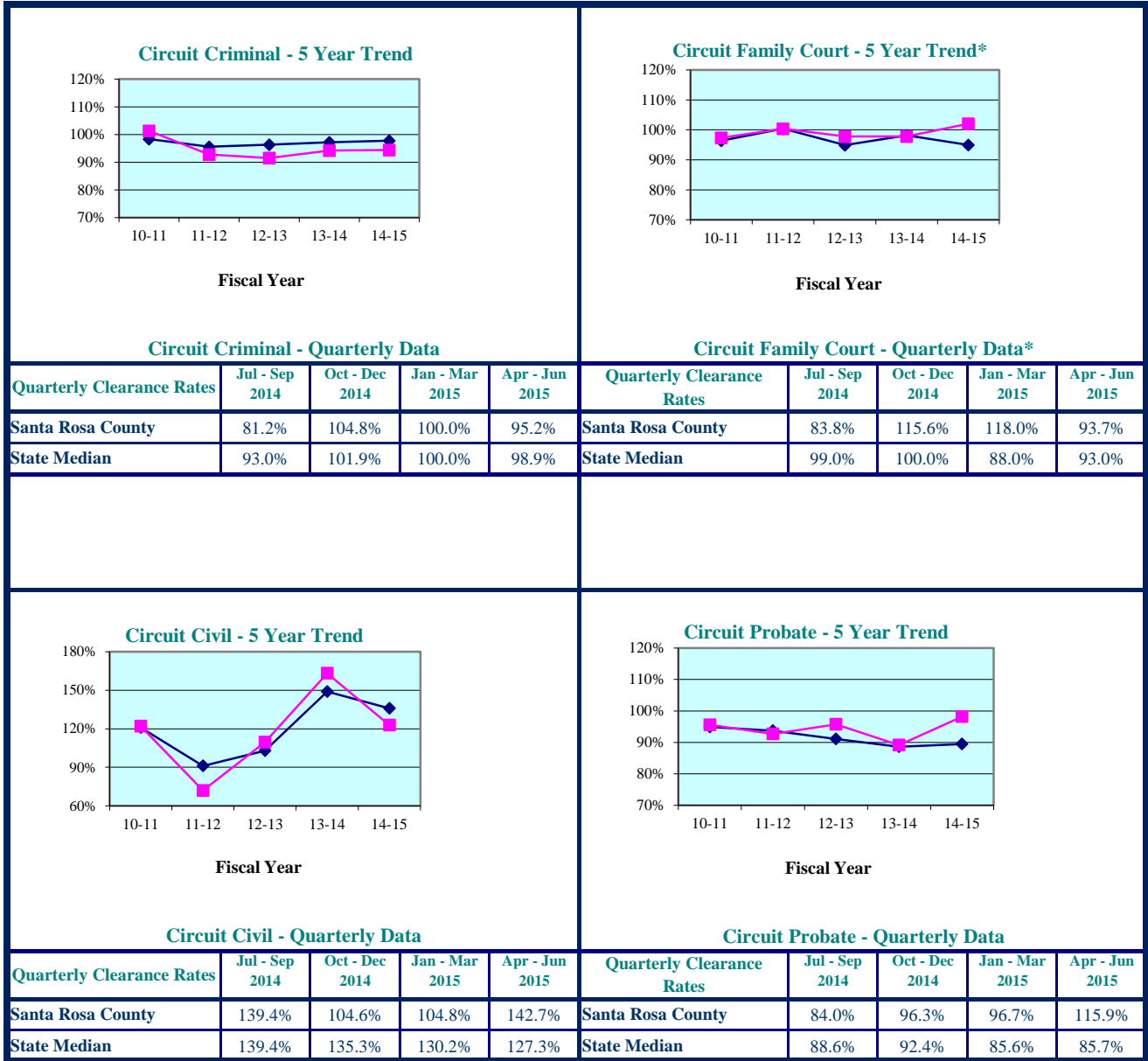


\* Family Court includes Domestic Relations, Juvenile Delinquency, Juvenile Dependency, and Termination of Parental Rights from January 2010 forward.

<b>Legend:</b>	County	State Median
----------------	--------	--------------

Note: Fiscal years 2010-11 to 2013-14 were extracted from a static data base and represent the official trial court statistics. Fiscal year 2014-15 and quarterly data for Jul-Sep 2014, Oct-Dec 2014, Jan-Mar 2015, Apr-Jun 2015 were extracted from a dynamic data base and may be amended by the Clerk of Court.

**Circuit Court  
By Division  
Santa Rosa County**

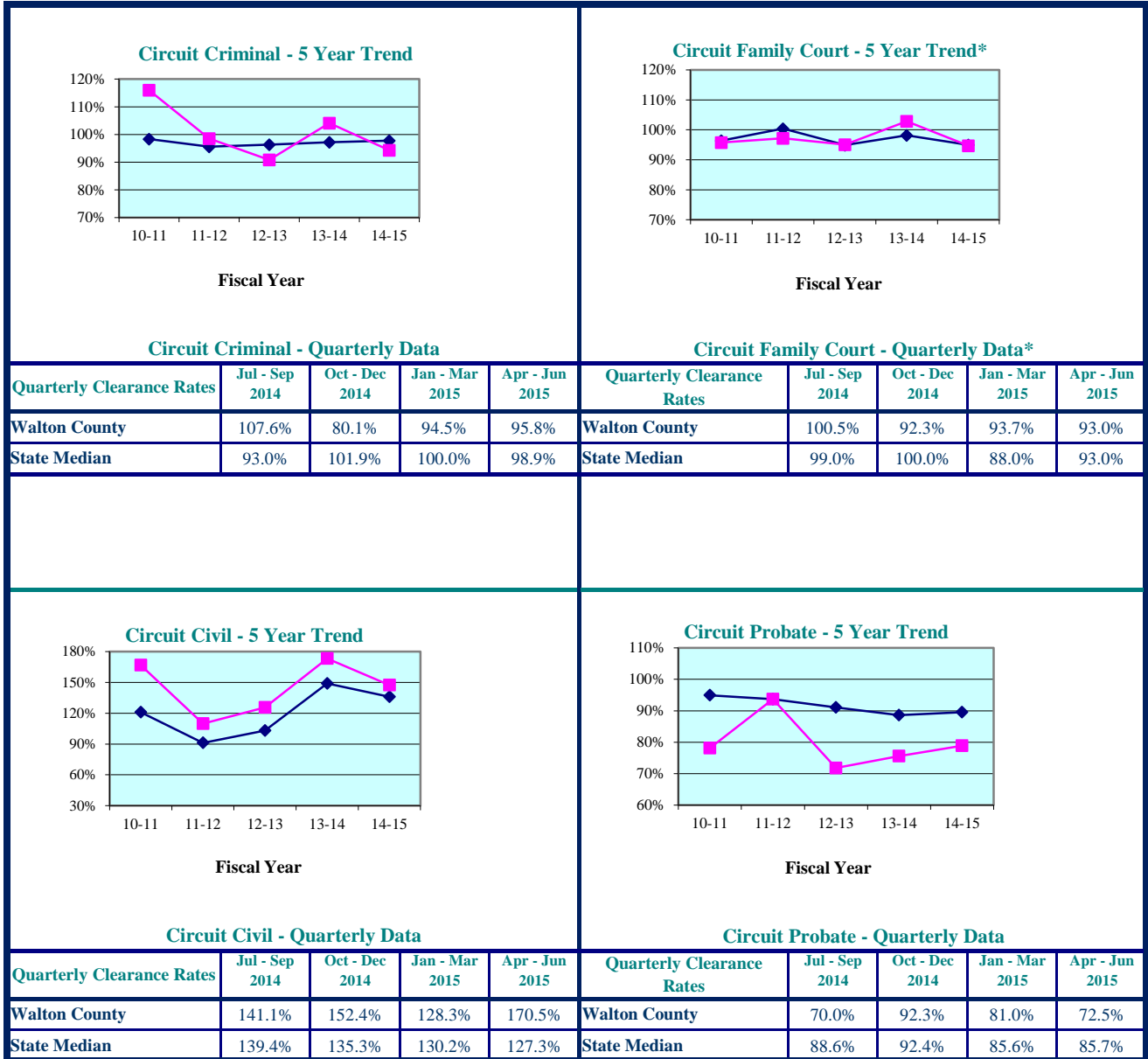


\* Family Court includes Domestic Relations, Juvenile Delinquency, Juvenile Dependency, and Termination of Parental Rights from January 2010 forward.

<b>Legend:</b>	County <span style="color: magenta;">■</span>	State Median <span style="color: black;">◆</span>
----------------	---	---

Note: Fiscal years 2010-11 to 2013-14 were extracted from a static data base and represent the official trial court statistics. Fiscal year 2014-15 and quarterly data for Jul-Sep 2014, Oct-Dec 2014, Jan-Mar 2015, Apr-Jun 2015 were extracted from a dynamic data base and may be amended by the Clerk of Court.

**Circuit Court  
By Division  
Walton County**



\* Family Court includes Domestic Relations, Juvenile Delinquency, Juvenile Dependency, and Termination of Parental Rights from January 2010 forward.

**Legend:** County ■ State Median ◆

Note: Fiscal years 2010-11 to 2013-14 were extracted from a static data base and represent the official trial court statistics. Fiscal year 2014-15 and quarterly data for Jul-Sep 2014, Oct-Dec 2014, Jan-Mar 2015, Apr-Jun 2015 were extracted from a dynamic data base and may be amended by the Clerk of Court.



Escambia County

Okaloosa County



\* Traffic data is not included in calculations.

<b>Legend:</b>	County	State Median
----------------	--------	--------------

Note: Fiscal years 2010-11 to 2013-14 were extracted from a static data base and represent the official trial court statistics. Fiscal year 2014-15 and quarterly data for Jul-Sep 2014, Oct-Dec 2014, Jan-Mar 2015, Apr-Jun 2015 were extracted from a dynamic data base and may be amended by the Clerk of Court.

Santa Rosa County

Walton County



\* Traffic data is not included in calculations.

<b>Legend:</b>	County	State Median
----------------	--------	--------------

Note: Fiscal years 2010-11 to 2013-14 were extracted from a static data base and represent the official trial court statistics. Fiscal year 2014-15 and quarterly data for Jul-Sep 2014, Oct-Dec 2014, Jan-Mar 2015, Apr-Jun 2015 were extracted from a dynamic data base and may be amended by the Clerk of Court.

**Escambia County  
By Category**

SRS Case Type	FY 2010-11	FY 2011-12	FY 2012-13	FY 2013-14	FY 2014-15
Misdemeanors	98.3%	92.1%	100.1%	107.7%	102.7%
Worthless Checks	101.5%	107.5%	98.3%	145.3%	107.7%
County Ordinances	102.9%	98.1%	98.3%	91.3%	103.2%
Municipal Ordinances	79.8%	140.0%	70.2%	92.9%	116.7%
Small Claims (up to \$5,000)	125.2%	93.7%	86.2%	106.0%	82.7%
Civil (\$5,001-\$15,000)	146.0%	138.8%	101.8%	103.3%	98.1%
Replevins	157.1%	78.0%	46.3%	110.5%	64.0%
Evictions	135.8%	97.4%	89.4%	76.0%	101.3%
Other County Civil	428.6%	84.2%	42.9%	139.1%	114.3%

**Escambia County  
By Category**

SRS Case Type	Jul - Sep 2014	Oct - Dec 2014	Jan - Mar 2015	Apr - Jun 2015
Misdemeanors	99.5%	118.5%	85.1%	110.0%
Worthless Checks	77.0%	92.0%	136.0%	131.5%
County Ordinances	86.4%	114.3%	110.0%	111.8%
Municipal Ordinances	100.0%	200.0%	75.0%	150.0%
Small Claims (up to \$5,000)	64.7%	141.0%	69.1%	68.8%
Civil (\$5,001-\$15,000)	81.0%	96.9%	83.3%	129.7%
Replevins	41.7%	46.7%	44.4%	114.3%
Evictions	82.6%	78.7%	74.0%	165.9%
Other County Civil	33.3%	80.0%	71.4%	433.3%

Notes:

1. Traffic data is not included in calculations.
2. Fiscal years 2010-11 to 2013-14 were extracted from a static data base and represent the official trial court statistics. Fiscal year 2014-15 and quarterly data for Jul-Sep 2014, Oct-Dec 2014, Jan-Mar 2015, Apr-Jun 2015 were extracted from a dynamic data base and may be amended by the Clerk of Court.

**Okaloosa County  
By Category**

SRS Case Type	FY 2010-11	FY 2011-12	FY 2012-13	FY 2013-14	FY 2014-15
Misdemeanors	101.4%	109.6%	101.1%	100.8%	99.0%
Worthless Checks	153.0%	168.7%	117.8%	115.0%	128.8%
County Ordinances	0.0%	0.0%	0.0%	0.0%	0.0%
Municipal Ordinances	46.7%	100.0%	55.4%	13.0%	20.0%
Small Claims (up to \$5,000)	149.2%	114.5%	100.8%	97.4%	80.0%
Civil (\$5,001-\$15,000)	110.2%	140.2%	131.0%	117.5%	83.3%
Replevins	100.0%	178.6%	50.0%	93.1%	105.6%
Evictions	112.8%	110.0%	96.6%	96.8%	99.1%
Other County Civil	475.0%	290.9%	114.3%	85.7%	122.2%

**Okaloosa County  
By Category**

SRS Case Type	Jul - Sep 2014	Oct - Dec 2014	Jan - Mar 2015	Apr - Jun 2015
Misdemeanors	102.3%	104.9%	81.3%	107.2%
Worthless Checks	116.0%	102.8%	176.1%	140.7%
County Ordinances	0.0%	0.0%	0.0%	0.0%
Municipal Ordinances	57.1%	18.8%	6.1%	18.5%
Small Claims (up to \$5,000)	85.3%	91.4%	72.5%	74.4%
Civil (\$5,001-\$15,000)	92.4%	107.5%	74.4%	64.6%
Replevins	140.0%	75.0%	71.4%	200.0%
Evictions	98.6%	108.1%	96.2%	94.3%
Other County Civil	20.0%	300.0%	400.0%	0.0%

Notes:

- Traffic data is not included in calculations.
- Fiscal years 2010-11 to 2013-14 were extracted from a static data base and represent the official trial court statistics. Fiscal year 2014-15 and quarterly data for Jul-Sep 2014, Oct-Dec 2014, Jan-Mar 2015, Apr-Jun 2015 were extracted from a dynamic data base and may be amended by the Clerk of Court.

**Santa Rosa County  
By Category**

SRS Case Type	FY 2010-11	FY 2011-12	FY 2012-13	FY 2013-14	FY 2014-15
Misdemeanors	101.3%	100.8%	100.1%	99.4%	100.9%
Worthless Checks	100.0%	92.6%	107.8%	107.1%	94.9%
County Ordinances	103.9%	114.0%	91.6%	94.2%	106.3%
Municipal Ordinances	0.0%	0.0%	0.0%	100.0%	53.3%
Small Claims (up to \$5,000)	149.9%	41.1%	98.5%	112.2%	78.2%
Civil (\$5,001-\$15,000)	106.9%	68.5%	103.6%	114.2%	93.0%
Replevins	106.3%	100.0%	85.7%	91.7%	83.3%
Evictions	94.2%	53.8%	93.1%	97.6%	111.2%
Other County Civil	88.9%	116.7%	66.7%	75.0%	71.4%

**Santa Rosa County  
By Category**

SRS Case Type	Jul - Sep 2014	Oct - Dec 2014	Jan - Mar 2015	Apr - Jun 2015
Misdemeanors	89.2%	113.3%	116.1%	88.4%
Worthless Checks	87.0%	103.6%	138.1%	59.3%
County Ordinances	98.9%	109.1%	121.7%	101.2%
Municipal Ordinances	54.5%	0.0%	50.0%	50.0%
Small Claims (up to \$5,000)	143.6%	71.9%	56.1%	73.8%
Civil (\$5,001-\$15,000)	96.7%	116.7%	97.1%	72.6%
Replevins	0.0%	20.0%	166.7%	50.0%
Evictions	123.8%	120.0%	96.3%	103.5%
Other County Civil	0.0%	50.0%	0.0%	50.0%

Notes:

1. Traffic data is not included in calculations.
2. Fiscal years 2010-11 to 2013-14 were extracted from a static data base and represent the official trial court statistics. Fiscal year 2014-15 and quarterly data for Jul-Sep 2014, Oct-Dec 2014, Jan-Mar 2015, Apr-Jun 2015 were extracted from a dynamic data base and may be amended by the Clerk of Court.

**Walton County  
By Category**

SRS Case Type	FY 2010-11	FY 2011-12	FY 2012-13	FY 2013-14	FY 2014-15
Misdemeanors	102.9%	75.2%	92.1%	98.0%	97.6%
Worthless Checks	122.3%	126.1%	71.8%	120.4%	171.0%
County Ordinances	85.9%	88.8%	88.1%	85.7%	90.0%
Municipal Ordinances	100.0%	60.0%	100.0%	0.0%	0.0%
Small Claims (up to \$5,000)	157.1%	119.1%	115.2%	98.3%	92.5%
Civil (\$5,001-\$15,000)	108.3%	130.9%	133.5%	84.7%	131.9%
Replevins	70.0%	110.0%	84.6%	122.2%	100.0%
Evictions	91.7%	92.7%	98.9%	79.9%	113.3%
Other County Civil	25.0%	63.2%	112.5%	1,400.0%	0.0%

**Walton County  
By Category**

SRS Case Type	Jul - Sep 2014	Oct - Dec 2014	Jan - Mar 2015	Apr - Jun 2015
Misdemeanors	123.1%	105.1%	39.6%	196.7%
Worthless Checks	290.0%	96.0%	143.8%	950.0%
County Ordinances	112.2%	112.9%	78.5%	75.0%
Municipal Ordinances	0.0%	0.0%	0.0%	0.0%
Small Claims (up to \$5,000)	158.8%	74.4%	52.1%	99.3%
Civil (\$5,001-\$15,000)	190.0%	124.3%	107.9%	113.3%
Replevins	100.0%	0.0%	100.0%	0.0%
Evictions	109.3%	134.8%	156.8%	78.3%
Other County Civil	0.0%	0.0%	0.0%	0.0%

Notes:

1. Traffic data is not included in calculations.
2. Fiscal years 2010-11 to 2013-14 were extracted from a static data base and represent the official trial court statistics. Fiscal year 2014-15 and quarterly data for Jul-Sep 2014, Oct-Dec 2014, Jan-Mar 2015, Apr-Jun 2015 were extracted from a dynamic data base and may be amended by the Clerk of Court.