

Circuit Criminal ♦ Overview

The Circuit Criminal division includes the following five categories of felony offenses: capital murder, serious crimes against persons, less serious crimes against persons, crimes against property, and drug offenses. Within these categories are the following case types:

Capital Murder - capital murder offenses

Serious Crimes Against Persons - non-capital murder (examples of non-capital murder cases include: negligent manslaughter, vehicular manslaughter, non-premeditated murder, commission of a felony which causes death, aggravated manslaughter, and other similar offenses) and sexual offenses

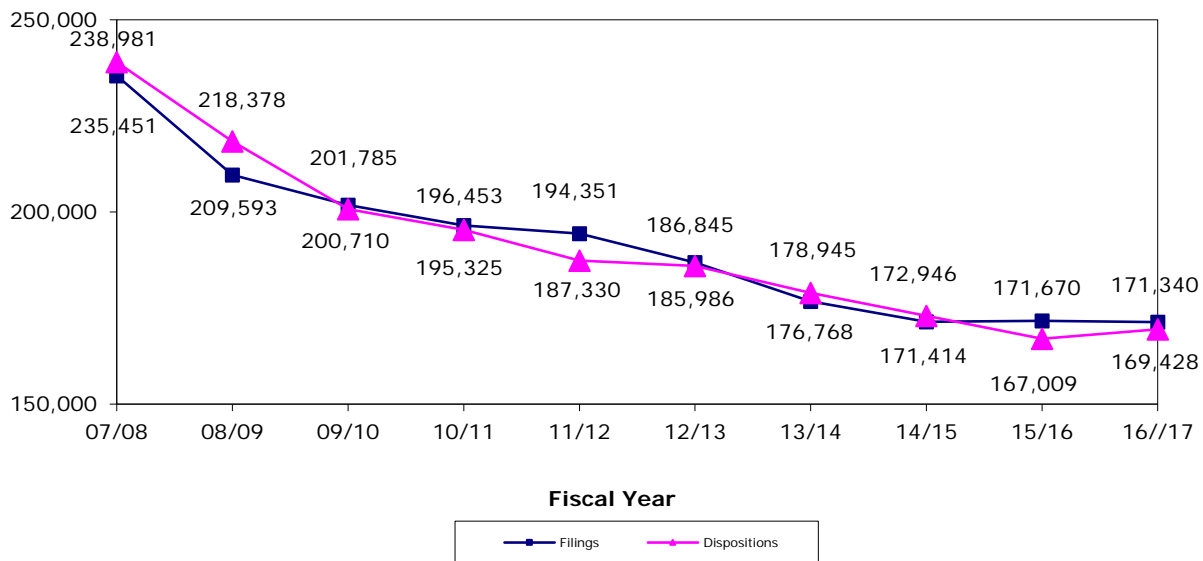
Less Serious Crimes Against Persons - robbery and other crimes against persons

Crimes Against Property - burglary, theft, forgery, fraud, worthless checks, other crimes against property, and other felony offenses (examples of other felony offenses are: weapon charges, resisting arrest, contempt of court, failure to appear, accessory after the fact, and book-making)

Drug Offenses - drug offenses

In the Circuit Criminal division, *filings* correspond to each defendant against whom an information or indictment is filed. *Dispositions* correspond to each defendant for whom a final judicial decision is rendered terminating a criminal proceeding by an acquittal, a dismissal, or a judgment stating the specific sentence (in the case of a conviction). *Charges (counts)* are defined as each individual offense with which a defendant is accused. These charges (counts) are tied directly to each filing. *Jury trials* are defined as trials in which a group of citizens is impaneled, selected, and sworn to determine the issues of fact in a case.

CIRCUIT CRIMINAL FILINGS AND DISPOSITIONS FY 2007-08 to FY 2016-17

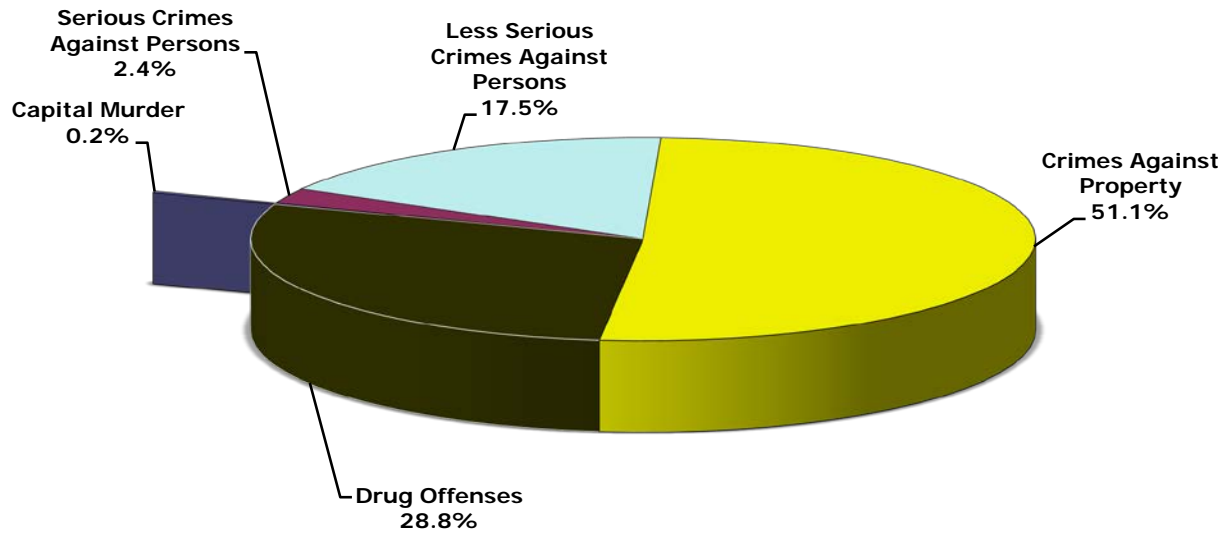


CIRCUIT CRIMINAL FILINGS
Statewide by Category/Case Type and Month
FY 2016-17

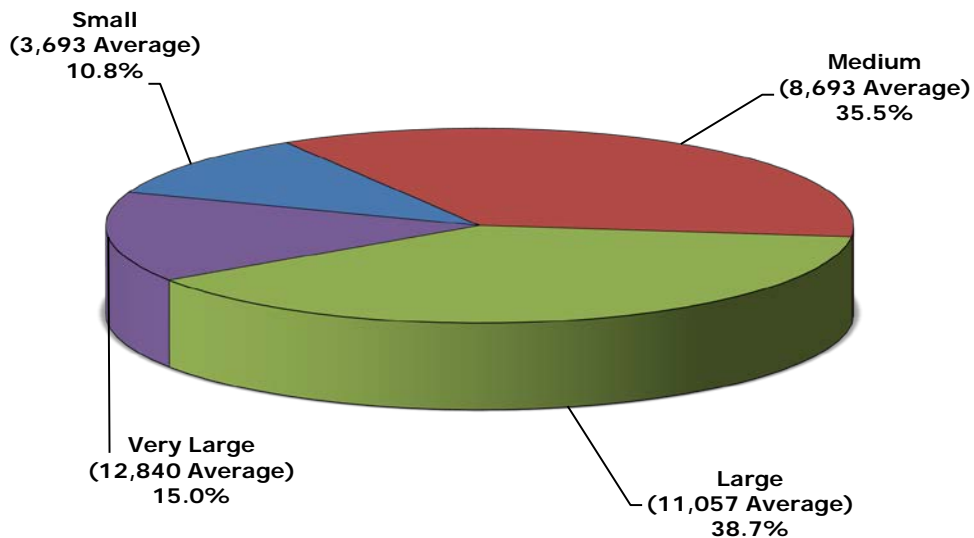
Category/ Case Type	Jul	Aug	Sep	Oct	Nov	Dec	Jan	Feb	Mar	Apr	May	Jun	Total
A. Capital Murder	30	34	33	19	34	25	30	36	35	16	44	27	363
1. Capital Murder	30	34	33	19	34	25	30	36	35	16	44	27	363
B. Serious Crimes Against Persons	311	397	366	300	307	345	269	310	378	309	445	394	4,131
1. Non-Capital Murder	110	127	108	102	98	119	93	97	114	100	152	120	1,340
2. Sexual Offenses	201	270	258	198	209	226	176	213	264	209	293	274	2,791
C. Less Serious Crimes Against Persons	2,496	2,677	2,474	2,281	2,309	2,351	2,550	2,389	2,774	2,281	2,708	2,776	30,066
1. Robbery	341	375	336	276	325	335	386	354	334	257	321	321	3,961
2. Other Crimes Against Persons	2,155	2,302	2,138	2,005	1,984	2,016	2,164	2,035	2,440	2,024	2,387	2,455	26,105
D. Crimes Against Property	7,258	7,715	7,266	6,679	6,759	6,976	7,449	7,277	7,905	6,635	7,864	7,697	87,480
1. Burglary	1,368	1,432	1,404	1,329	1,389	1,320	1,452	1,346	1,541	1,181	1,400	1,433	16,595
2. Theft, Forgery, Fraud	3,540	3,878	3,502	3,221	3,257	3,477	3,714	3,553	3,729	3,074	3,796	3,569	42,310
3. Worthless Checks	40	59	66	60	34	25	36	37	62	48	40	46	553
4. Other Crimes Against Property	125	154	118	123	120	120	136	127	150	133	158	163	1,627
5. Other	2,185	2,192	2,176	1,946	1,959	2,034	2,111	2,214	2,423	2,199	2,470	2,486	26,395
E. Drug Offenses	3,781	4,147	3,855	3,659	3,573	3,878	3,867	4,109	4,697	4,184	4,777	4,773	49,300
1. Drugs Offenses	3,781	4,147	3,855	3,659	3,573	3,878	3,867	4,109	4,697	4,184	4,777	4,773	49,300
Total	13,876	14,970	13,994	12,938	12,982	13,575	14,165	14,121	15,789	13,425	15,838	15,667	171,340

Circuit Criminal ◆ Filings

**CIRCUIT CRIMINAL FILINGS
by Category
FY 2016-17**



**CIRCUIT CRIMINAL FILINGS
by Circuit Size*
FY 2016-17**



*Small Circuits - 2nd, 3rd, 8th, 14th, 16th;
 Medium Circuits - 1st, 5th, 7th, 10th, 12th, 18th, 19th;
 Large Circuits - 4th, 6th, 9th, 13th, 15th, 20th; and
 Very Large Circuits - 11th, 17th (as defined in the Glossary).

CIRCUIT CRIMINAL FILINGS
by Circuit and Case Type
FY 2016-17

Circuit	Capital Murder	Non-Capital Murder	Sexual Offenses	Robbery	Other Crimes Against Persons	Burglary	Theft Forgery Fraud	Worthless Checks	Other Crimes Against Property	Drugs	Other	Total
1	25	43	201	192	2,273	1,047	2,504	40	129	3,301	1,883	11,638
2	14	30	114	84	915	405	997	39	45	1,058	760	4,461
3	5	16	31	20	452	233	586	21	38	956	402	2,760
4	4	134	211	254	1,216	807	1,884	7	63	2,390	1,050	8,020
5	23	46	173	146	1,450	880	2,600	34	100	2,461	1,621	9,534
6	18	80	217	209	2,069	1,449	4,300	87	144	5,080	2,951	16,604
7	12	51	106	139	1,676	895	2,122	80	114	2,722	1,265	9,182
8	9	30	93	68	587	437	1,026	17	28	1,098	566	3,959
9	57	131	248	391	1,788	1,312	3,285	5	127	3,362	1,729	12,435
10	24	59	172	146	1,681	1,072	2,104	25	77	3,563	1,183	10,106
11	25	261	217	646	2,169	1,298	3,320	22	128	3,294	1,775	13,155
12	4	43	90	99	768	549	1,760	4	61	1,957	751	6,086
13	23	55	146	288	1,886	1,324	3,441	53	137	3,890	1,715	12,958
14	1	29	130	86	979	512	1,012	7	53	1,694	1,612	6,115
15	53	116	124	297	1,142	1,175	2,314	34	58	2,596	831	8,740
16	0	6	11	17	229	81	237	17	12	431	129	1,170
17	29	97	118	492	1,901	1,249	3,636	4	112	2,830	2,056	12,524
18	22	29	155	157	1,329	728	2,271	25	69	2,426	1,778	8,989
19	9	29	93	77	764	389	1,133	23	58	1,803	940	5,318
20	6	55	141	153	831	753	1,778	9	74	2,388	1,398	7,586
Total	363	1,340	2,791	3,961	26,105	16,595	42,310	553	1,627	49,300	26,395	171,340

Circuit Criminal ◆ Filings

**CIRCUIT CRIMINAL FILINGS
by Circuit/County and Category
FY 2016-17**

Circuit/County	Capital Murder	Serious Crimes Against Persons	Less Serious Crimes Against Persons	Crimes Against Property	Drug Offenses	Total
Circuit 1	25	244	2,465	5,603	3,301	11,638
Escambia	14	118	1,331	2,823	1,406	5,692
Okaloosa	7	53	558	1,258	1,010	2,886
Santa Rosa	3	46	383	1,050	642	2,124
Walton	1	27	193	472	243	936
Circuit 2	14	144	999	2,246	1,058	4,461
Franklin	0	6	34	92	137	269
Gadsden	6	19	180	276	91	572
Jefferson	1	6	39	99	41	186
Leon	7	90	653	1,529	645	2,924
Liberty	0	7	21	73	54	155
Wakulla	0	16	72	177	90	355
Circuit 3	5	47	472	1,280	956	2,760
Columbia	1	19	159	448	327	954
Dixie	1	2	37	102	67	209
Hamilton	0	1	53	156	113	323
Lafayette	0	2	15	40	21	78
Madison	1	10	52	142	108	313
Suwannee	2	11	100	227	220	560
Taylor	0	2	56	165	100	323
Circuit 4	4	345	1,470	3,811	2,390	8,020
Clay	1	63	263	771	392	1,490
Duval	2	272	1,107	2,778	1,685	5,844
Nassau	1	10	100	262	313	686

CIRCUIT CRIMINAL FILINGS
by Circuit/County and Category
FY 2016-17

Circuit/County	Capital Murder	Serious Crimes Against Persons	Less Serious Crimes Against Persons	Crimes Against Property	Drug Offenses	Total
Circuit 5	23	219	1,596	5,235	2,461	9,534
Citrus	0	39	198	538	305	1,080
Hernando	7	44	296	1,066	490	1,903
Lake	11	60	506	1,384	663	2,624
Marion	5	55	433	1,869	676	3,038
Sumter	0	21	163	378	327	889
Circuit 6	18	297	2,278	8,931	5,080	16,604
Pasco	4	138	904	3,201	1,765	6,012
Pinellas	14	159	1,374	5,730	3,315	10,592
Circuit 7	12	157	1,815	4,476	2,722	9,182
Flagler	2	19	123	332	170	646
Putnam	3	28	154	558	372	1,115
St. Johns	0	18	264	695	438	1,415
Volusia	7	92	1,274	2,891	1,742	6,006
Circuit 8	9	123	655	2,074	1,098	3,959
Alachua	8	87	357	1,259	590	2,301
Baker	0	7	56	144	91	298
Bradford	0	17	97	272	180	566
Gilchrist	0	0	38	109	55	202
Levy	1	9	77	232	147	466
Union	0	3	30	58	35	126
Circuit 9	57	379	2,179	6,458	3,362	12,435
Orange	37	299	1,722	4,992	2,593	9,643
Osceola	20	80	457	1,466	769	2,792

Circuit Criminal ◆ Filings

CIRCUIT CRIMINAL FILINGS
by Circuit/County and Category
FY 2016-17

Circuit/County	Capital Murder	Serious Crimes Against Persons	Less Serious Crimes Against Persons	Crimes Against Property	Drug Offenses	Total
Circuit 10	24	231	1,827	4,461	3,563	10,106
Hardee	0	5	57	111	154	327
Highlands	4	39	170	545	271	1,029
Polk	20	187	1,600	3,805	3,138	8,750
Circuit 11	25	478	2,815	6,543	3,294	13,155
Miami-Dade	25	478	2,815	6,543	3,294	13,155
Circuit 12	4	133	867	3,125	1,957	6,086
Desoto	1	14	78	250	136	479
Manatee	3	58	375	1,387	831	2,654
Sarasota	0	61	414	1,488	990	2,953
Circuit 13	23	201	2,174	6,670	3,890	12,958
Hillsborough	23	201	2,174	6,670	3,890	12,958
Circuit 14	1	159	1,065	3,196	1,694	6,115
Bay	1	104	600	2,331	923	3,959
Calhoun	0	9	61	109	131	310
Gulf	0	6	36	82	122	246
Holmes	0	12	100	187	144	443
Jackson	0	18	190	326	188	722
Washington	0	10	78	161	186	435
Circuit 15	53	240	1,439	4,412	2,596	8,740
Palm Beach	53	240	1,439	4,412	2,596	8,740
Circuit 16	0	17	246	476	431	1,170
Monroe	0	17	246	476	431	1,170

CIRCUIT CRIMINAL FILINGS
by Circuit/County and Category
FY 2016-17

Circuit/County	Capital Murder	Serious Crimes Against Persons	Less Serious Crimes Against Persons	Crimes Against Property	Drug Offenses	Total
Circuit 17	29	215	2,393	7,057	2,830	12,524
Broward	29	215	2,393	7,057	2,830	12,524
Circuit 18	22	184	1,486	4,871	2,426	8,989
Brevard	9	105	1,045	3,280	1,661	6,100
Seminole	13	79	441	1,591	765	2,889
Circuit 19	9	122	841	2,543	1,803	5,318
Indian River	2	19	168	658	268	1,115
Martin	1	24	145	526	451	1,147
Okeechobee	4	12	99	249	250	614
St. Lucie	2	67	429	1,110	834	2,442
Circuit 20	6	196	984	4,012	2,388	7,586
Charlotte	0	11	98	704	429	1,242
Collier	0	42	265	825	396	1,528
Glades	1	4	26	78	16	125
Hendry	0	8	85	234	152	479
Lee	5	131	510	2,171	1,395	4,212
Total	363	4,131	30,066	87,480	49,300	171,340

Circuit Criminal ◆ Filings

CIRCUIT CRIMINAL CHARGES (COUNTS)
by Circuit/County
FY 2016-17

Circuit/County	Total Filings (Defendants)	Total Charges (Counts)	Number of Charges (Counts) per Filing
Circuit 1	11,638	25,335	2.2
Escambia	5,692	13,103	2.3
Okaloosa	2,886	5,753	2.0
Santa Rosa	2,124	4,544	2.1
Walton	936	1,935	2.1
Circuit 2	4,461	9,891	2.2
Franklin	269	526	2.0
Gadsden	572	1,079	1.9
Jefferson	186	396	2.1
Leon	2,924	6,778	2.3
Liberty	155	309	2.0
Wakulla	355	803	2.3
Circuit 3	2,760	6,175	2.2
Columbia	954	1,985	2.1
Dixie	209	518	2.5
Hamilton	323	776	2.4
Lafayette	78	194	2.5
Madison	313	817	2.6
Suwannee	560	1,277	2.3
Taylor	323	608	1.9
Circuit 4	8,020	17,238	2.1
Clay	1,490	2,664	1.8
Duval	5,844	13,339	2.3
Nassau	686	1,235	1.8

CIRCUIT CRIMINAL CHARGES (COUNTS)
by Circuit/County
 FY 2016-17

Circuit/County	Total Filings (Defendants)	Total Charges (Counts)	Number of Charges (Counts) per Filing
Circuit 5	9,534	19,974	2.1
Citrus	1,080	2,290	2.1
Hernando	1,903	3,849	2.0
Lake	2,624	5,805	2.2
Marion	3,038	6,046	2.0
Sumter	889	1,984	2.2
Circuit 6	16,604	27,588	1.7
Pasco	6,012	10,773	1.8
Pinellas	10,592	16,815	1.6
Circuit 7	9,182	17,701	1.9
Flagler	646	1,216	1.9
Putnam	1,115	2,233	2.0
St. Johns	1,415	2,754	1.9
Volusia	6,006	11,498	1.9
Circuit 8	3,959	8,127	2.1
Alachua	2,301	4,561	2.0
Baker	298	725	2.4
Bradford	566	1,099	1.9
Gilchrist	202	428	2.1
Levy	466	984	2.1
Union	126	330	2.6
Circuit 9	12,435	27,494	2.2
Orange	9,643	21,157	2.2
Osceola	2,792	6,337	2.3

Circuit Criminal ♦ Filings

CIRCUIT CRIMINAL CHARGES (COUNTS)
by Circuit/County
FY 2016-17

Circuit/County	Total Filings (Defendants)	Total Charges (Counts)	Number of Charges (Counts) per Filing
Circuit 10	10,106	30,115	3.0
Hardee	327	874	2.7
Highlands	1,029	3,644	3.5
Polk	8,750	25,597	2.9
Circuit 11	13,155	27,967	2.1
Miami-Dade	13,155	27,967	2.1
Circuit 12	6,086	13,933	2.3
Desoto	479	1,340	2.8
Manatee	2,654	5,892	2.2
Sarasota	2,953	6,701	2.3
Circuit 13	12,958	28,218	2.2
Hillsborough	12,958	28,218	2.2
Circuit 14	6,115	12,626	2.1
Bay	3,959	7,899	2.0
Calhoun	310	582	1.9
Gulf	246	524	2.1
Holmes	443	930	2.1
Jackson	722	1,955	2.7
Washington	435	736	1.7
Circuit 15	8,740	19,385	2.2
Palm Beach	8,740	19,385	2.2
Circuit 16	1,170	2,851	2.4
Monroe	1,170	2,851	2.4

CIRCUIT CRIMINAL CHARGES (COUNTS)
by Circuit/County
 FY 2016-17

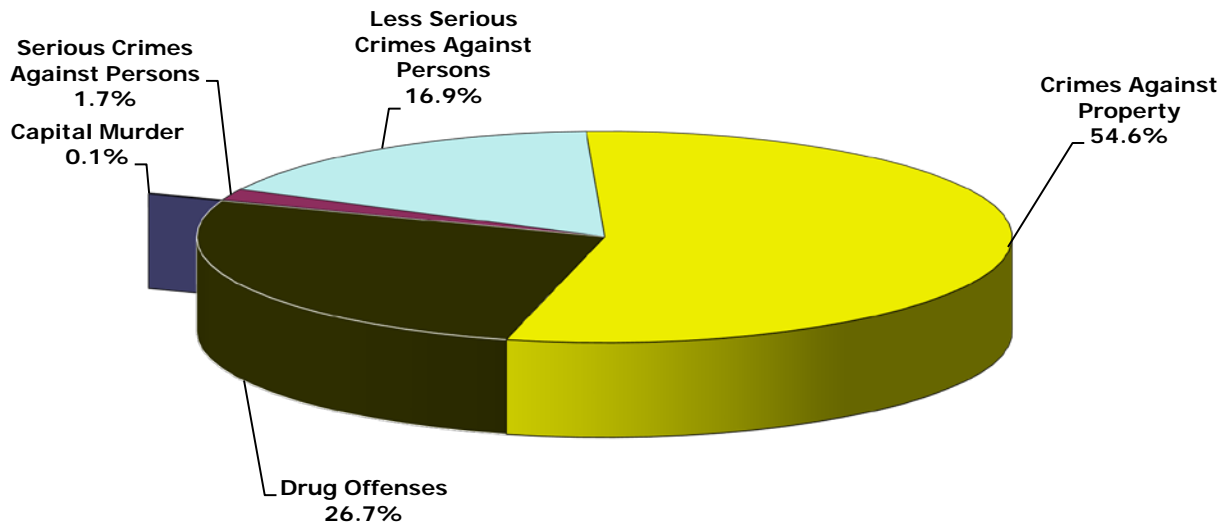
Circuit/County	Total Filings (Defendants)	Total Charges (Counts)	Number of Charges (Counts) per Filing
Circuit 17	12,524	26,891	2.1
Broward	12,524	26,891	2.1
Circuit 18	8,989	19,979	2.2
Brevard	6,100	14,036	2.3
Seminole	2,889	5,943	2.1
Circuit 19	5,318	14,137	2.7
Indian River	1,115	2,537	2.3
Martin	1,147	3,005	2.6
Okeechobee	614	1,386	2.3
St. Lucie	2,442	7,209	3.0
Circuit 20	7,586	15,272	2.0
Charlotte	1,242	2,534	2.0
Collier	1,528	2,870	1.9
Glades	125	278	2.2
Hendry	479	1,109	2.3
Lee	4,212	8,481	2.0
Total	171,340	370,897	2.2

Circuit Criminal ♦ Dispositions

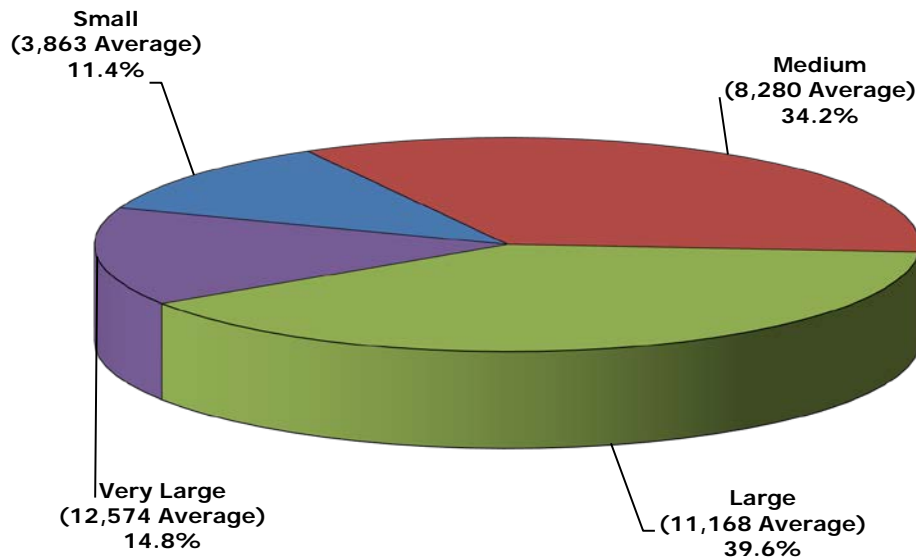
CIRCUIT CRIMINAL DISPOSITIONS
Statewide by Category/Case Type and Month
FY 2016-17

Category/ Case Type	Jul	Aug	Sep	Oct	Nov	Dec	Jan	Feb	Mar	Apr	May	Jun	Total
A. Capital Murder	15	18	21	6	26	14	19	14	12	14	17	15	191
1. Capital Murder	15	18	21	6	26	14	19	14	12	14	17	15	191
B. Serious Crimes Against Persons	207	262	270	235	252	200	230	215	301	234	280	261	2,947
1. Non-Capital Murder	74	108	88	95	81	62	79	79	102	84	131	93	1,076
2. Sexual Offenses	133	154	182	140	171	138	151	136	199	150	149	168	1,871
C. Less Serious Crimes Against Persons	2,148	2,509	2,394	2,146	2,382	2,143	2,414	2,286	2,686	2,260	2,608	2,619	28,595
1. Robbery	319	341	294	301	330	321	279	283	357	282	350	325	3,782
2. Other Crimes Against Persons	1,829	2,168	2,100	1,845	2,052	1,822	2,135	2,003	2,329	1,978	2,258	2,294	24,813
D. Crimes Against Property	7,010	7,815	7,826	7,302	7,393	6,484	7,767	8,147	9,109	7,389	7,940	8,292	92,474
1. Burglary	1,063	1,336	1,316	1,303	1,277	1,123	1,277	1,266	1,506	1,172	1,362	1,415	15,416
2. Theft, Forgery, Fraud	3,466	3,672	3,699	3,445	3,433	3,069	3,711	3,802	4,272	3,474	3,760	3,927	43,730
3. Worthless Checks	73	64	188	90	91	63	49	550	411	162	56	55	1,852
4. Other Crimes Against Property	112	114	131	114	123	140	137	131	154	147	148	145	1,596
5. Other	2,296	2,629	2,492	2,350	2,469	2,089	2,593	2,398	2,766	2,434	2,614	2,750	29,880
E. Drug Offenses	3,452	3,978	3,750	3,393	3,547	3,008	4,010	3,651	4,133	3,770	4,226	4,303	45,221
1. Drugs Offenses	3,452	3,978	3,750	3,393	3,547	3,008	4,010	3,651	4,133	3,770	4,226	4,303	45,221
Total	12,832	14,582	14,261	13,082	13,600	11,849	14,440	14,313	16,241	13,667	15,071	15,490	169,428

CIRCUIT CRIMINAL DISPOSITIONS
by Category
FY 2016-17



CIRCUIT CRIMINAL DISPOSITIONS
by Circuit Size*
FY 2016-17



*Small Circuits - 2nd, 3rd, 8th, 14th, 16th;
Medium Circuits - 1st, 5th, 7th, 10th, 12th, 18th, 19th;
Large Circuits - 4th, 6th, 9th, 13th, 15th, 20th; and
Very Large Circuits - 11th, 17th (as defined in the Glossary).

Circuit Criminal ♦ Dispositions

**CIRCUIT CRIMINAL DISPOSITIONS
by Circuit and Case Type
FY 2016-17**

Circuit	Capital Murder	Non-Capital Murder	Sexual Offenses	Robbery	Other Crimes Against Persons	Burglary	Theft Forgery Fraud	Worthless Checks	Other Crimes Against Property	Drugs	Other	Total
1	20	46	139	153	1,964	1,027	2,364	46	104	2,665	1,872	10,400
2	4	21	77	86	1,038	398	1,697	1,047	43	1,117	881	6,409
3	2	10	30	12	402	188	543	15	37	859	404	2,502
4	4	116	164	306	1,333	849	2,053	11	72	2,485	1,233	8,626
5	13	52	123	114	1,337	790	2,453	39	99	2,121	1,596	8,737
6	17	73	145	196	1,848	1,295	4,226	140	126	4,508	2,925	15,499
7	14	35	71	142	1,619	919	2,258	83	111	2,634	1,324	9,210
8	0	18	73	69	550	316	1,012	20	37	1,053	572	3,720
9	22	92	165	425	1,628	1,075	3,649	6	124	3,329	2,193	12,708
10	8	45	123	163	1,713	860	2,105	36	79	1,838	2,666	9,636
11	8	206	110	546	2,549	1,293	4,061	23	134	3,246	2,054	14,230
12	4	36	90	101	746	556	1,893	9	73	1,935	930	6,373
13	20	51	78	414	1,829	1,533	3,689	43	145	3,448	1,720	12,970
14	3	17	74	61	862	433	956	198	69	1,486	1,808	5,967
15	22	82	62	287	1,130	1,119	2,489	37	54	2,661	1,031	8,974
16	1	1	6	15	138	59	166	2	8	237	86	719
17	8	79	78	347	1,321	1,021	2,752	6	92	3,207	2,006	10,917
18	13	28	93	138	1,211	642	2,241	49	64	2,002	1,839	8,320
19	6	24	65	55	716	295	1,190	28	42	1,820	1,042	5,283
20	2	44	105	152	879	748	1,933	14	83	2,570	1,698	8,228
Total	191	1,076	1,871	3,782	24,813	15,416	43,730	1,852	1,596	45,221	29,880	169,428

CIRCUIT CRIMINAL DISPOSITIONS
by Circuit/County and Category
FY 2016-17

Circuit/County	Capital Murder	Serious Crimes Against Persons	Less Serious Crimes Against Persons	Crimes Against Property	Drug Offenses	Total
Circuit 1	20	185	2,117	5,413	2,665	10,400
Escambia	10	91	1,102	2,763	1,082	5,048
Okaloosa	5	49	547	1,270	825	2,696
Santa Rosa	3	27	323	930	498	1,781
Walton	2	18	145	450	260	875
Circuit 2	4	98	1,124	4,066	1,117	6,409
Franklin	0	5	36	92	159	292
Gadsden	2	8	155	397	74	636
Jefferson	0	1	30	59	29	119
Leon	2	75	820	3,287	745	4,929
Liberty	0	0	26	54	25	105
Wakulla	0	9	57	177	85	328
Circuit 3	2	40	414	1,187	859	2,502
Columbia	0	18	149	448	312	927
Dixie	0	2	31	70	52	155
Hamilton	0	4	38	140	60	242
Lafayette	0	1	10	26	16	53
Madison	0	3	50	131	116	300
Suwannee	1	8	76	240	214	539
Taylor	1	4	60	132	89	286
Circuit 4	4	280	1,639	4,218	2,485	8,626
Clay	2	54	310	859	371	1,596
Duval	2	218	1,244	3,126	1,857	6,447
Nassau	0	8	85	233	257	583

Circuit Criminal ♦ Dispositions

**CIRCUIT CRIMINAL DISPOSITIONS
by Circuit/County and Category
FY 2016-17**

Circuit/County	Capital Murder	Serious Crimes Against Persons	Less Serious Crimes Against Persons	Crimes Against Property	Drug Offenses	Total
Circuit 5	13	175	1,451	4,977	2,121	8,737
Citrus	1	32	189	542	299	1,063
Hernando	3	20	292	1,072	434	1,821
Lake	2	47	485	1,325	663	2,522
Marion	7	65	350	1,739	528	2,689
Sumter	0	11	135	299	197	642
Circuit 6	17	218	2,044	8,712	4,508	15,499
Pasco	1	89	750	2,891	1,458	5,189
Pinellas	16	129	1,294	5,821	3,050	10,310
Circuit 7	14	106	1,761	4,695	2,634	9,210
Flagler	0	11	83	266	156	516
Putnam	3	15	163	543	298	1,022
St. Johns	3	24	262	721	403	1,413
Volusia	8	56	1,253	3,165	1,777	6,259
Circuit 8	0	91	619	1,957	1,053	3,720
Alachua	0	58	369	1,150	601	2,178
Baker	0	10	48	164	73	295
Bradford	0	15	79	252	212	558
Gilchrist	0	1	25	101	45	172
Levy	0	3	84	233	88	408
Union	0	4	14	57	34	109
Circuit 9	22	257	2,053	7,047	3,329	12,708
Orange	19	212	1,587	5,139	2,391	9,348
Osceola	3	45	466	1,908	938	3,360

CIRCUIT CRIMINAL DISPOSITIONS
by Circuit/County and Category
FY 2016-17

Circuit/County	Capital Murder	Serious Crimes Against Persons	Less Serious Crimes Against Persons	Crimes Against Property	Drug Offenses	Total
Circuit 10	8	168	1,876	5,746	1,838	9,636
Hardee	0	5	57	170	156	388
Highlands	0	18	139	436	195	788
Polk	8	145	1,680	5,140	1,487	8,460
Circuit 11	8	316	3,095	7,565	3,246	14,230
Miami-Dade	8	316	3,095	7,565	3,246	14,230
Circuit 12	4	126	847	3,461	1,935	6,373
Desoto	0	10	76	303	204	593
Manatee	2	59	381	1,525	810	2,777
Sarasota	2	57	390	1,633	921	3,003
Circuit 13	20	129	2,243	7,130	3,448	12,970
Hillsborough	20	129	2,243	7,130	3,448	12,970
Circuit 14	3	91	923	3,464	1,486	5,967
Bay	2	57	492	2,560	826	3,937
Calhoun	0	6	52	111	105	274
Gulf	0	1	35	96	111	243
Holmes	0	11	103	220	126	460
Jackson	0	8	186	320	190	704
Washington	1	8	55	157	128	349
Circuit 15	22	144	1,417	4,730	2,661	8,974
Palm Beach	22	144	1,417	4,730	2,661	8,974
Circuit 16	1	7	153	321	237	719
Monroe	1	7	153	321	237	719

Circuit Criminal ♦ Dispositions

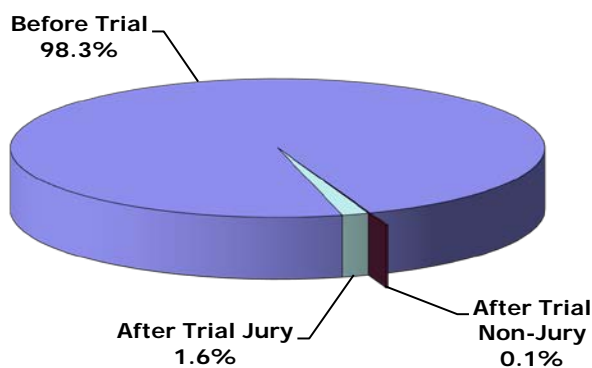
**CIRCUIT CRIMINAL DISPOSITIONS
by Circuit/County and Category
FY 2016-17**

Circuit/County	Capital Murder	Serious Crimes Against Persons	Less Serious Crimes Against Persons	Crimes Against Property	Drug Offenses	Total
Circuit 17	8	157	1,668	5,877	3,207	10,917
Broward	8	157	1,668	5,877	3,207	10,917
Circuit 18	13	121	1,349	4,835	2,002	8,320
Brevard	5	53	963	3,240	1,330	5,591
Seminole	8	68	386	1,595	672	2,729
Circuit 19	6	89	771	2,597	1,820	5,283
Indian River	2	24	148	636	301	1,111
Martin	1	22	129	561	558	1,271
Okeechobee	0	8	88	277	214	587
St. Lucie	3	35	406	1,123	747	2,314
Circuit 20	2	149	1,031	4,476	2,570	8,228
Charlotte	1	18	154	902	596	1,671
Collier	0	25	251	795	378	1,449
Glades	1	1	25	69	12	108
Hendry	0	6	95	317	163	581
Lee	0	99	506	2,393	1,421	4,419
Total	191	2,947	28,595	92,474	45,221	169,428

CIRCUIT CRIMINAL DISPOSITIONS
Statewide by Disposition Type and Case Type
FY 2016-17

Disposition Type	Capital Murder	Non-Capital Murder	Sexual Offenses	Robbery	Other Crimes Against Persons	Burglary	Theft Forgery Fraud	Worthless Checks	Other Crimes Against Property	Drugs	Other	Total
A. Before Trial	93	810	1,593	3,594	24,096	15,110	43,484	1,850	1,574	44,809	29,475	166,488
1. Speedy Trial	0	0	0	0	1	0	0	0	0	1	0	2
2. Dismissed	20	105	254	352	2,784	1,098	3,534	1,401	178	3,438	1,526	14,690
3. Transferred	4	9	37	40	967	274	633	6	87	842	4,551	7,450
4. Plea	49	649	1,202	3,038	18,073	12,964	34,125	350	1,099	36,956	22,580	131,085
5. Other*	20	47	100	164	2,271	774	5,192	93	210	3,572	818	13,261
B. After Trial Non-Jury	1	8	2	6	44	15	29	2	4	49	36	196
1. Acquittal/Dismissal	1	2	0	1	13	6	4	0	2	2	1	32
2. Plea	0	0	1	2	24	6	23	2	2	42	26	128
3. Conviction	0	6	1	3	7	3	2	0	0	5	9	36
C. After Trial Jury	97	258	276	182	673	291	217	0	18	363	369	2,744
1. Acquittal/Dismissal	19	48	64	34	218	66	61	0	7	79	73	669
2. Plea	3	11	12	8	33	26	10	0	2	36	33	174
3. Conviction	75	199	200	140	422	199	146	0	9	248	263	1,901
Total	191	1,076	1,871	3,782	24,813	15,416	43,730	1,852	1,596	45,221	29,880	169,428

CIRCUIT CRIMINAL DISPOSITIONS
by Disposition Type
FY 2016-17



*The disposition type "Other" is used to report cases disposed for: defendants placed on deferred prosecution or other pretrial diversion or probation programs approved after an information or an indictment is filed, defendants declared mentally or physically unable to stand trial, cases disposed upon estreatment of a bond, cases that are nolle prosequi (no further prosecution) for administrative reasons, or similar matters.

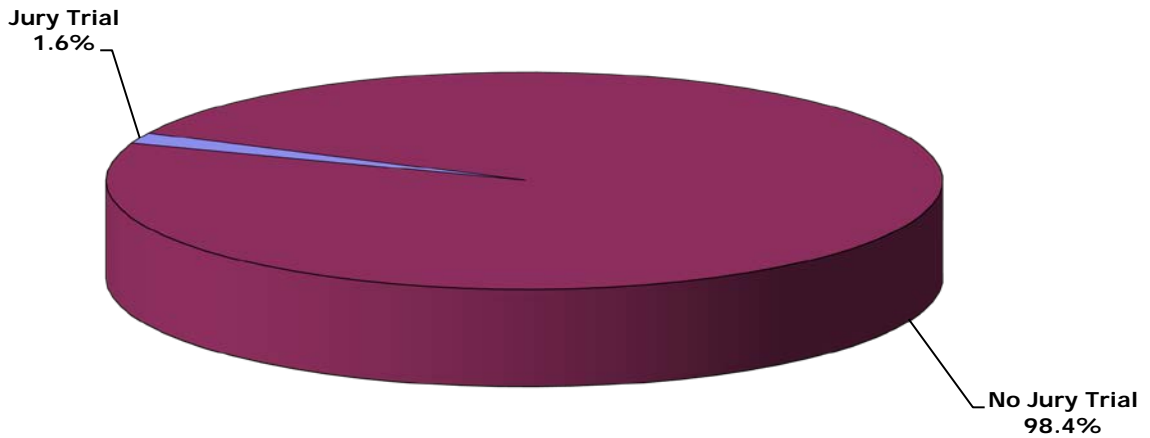
**CIRCUIT CRIMINAL JURY TRIAL and
GUILTY DISPOSITION RATES*
by Circuit
FY 2016-17**

Circuit (Circuit Seat)	Jury Trials (includes Acquittal/ Dismissal, Pleas, and Convictions)	Total Dispositions	Jury Trial Rates	Guilty Dispositions (includes Pleas and Convictions)	Total Dispositions (excludes Transferred and Other)	Guilty Disposition Rates
First (Pensacola)	154	10,400	1.5%	8,133	9,689	83.9%
Second (Tallahassee)	180	6,409	2.8%	4,010	6,079	66.0%
Third (Lake City)	34	2,502	1.4%	1,885	2,194	85.9%
Fourth (Jacksonville)	165	8,626	1.9%	7,782	8,312	93.6%
Fifth (Tavares)	116	8,737	1.3%	7,161	7,950	90.1%
Sixth (Clearwater)	187	15,499	1.2%	12,673	13,375	94.8%
Seventh (Daytona Beach)	105	9,210	1.1%	7,973	8,488	93.9%
Eighth (Gainesville)	64	3,720	1.7%	2,918	3,268	89.3%
Ninth (Orlando)	199	12,708	1.6%	9,374	11,720	80.0%
Tenth (Bartow)	250	9,636	2.6%	8,075	8,782	91.9%
Eleventh (Miami-Dade)	276	14,230	1.9%	9,234	10,339	89.3%
Twelfth (Sarasota)	124	6,373	1.9%	5,489	5,954	92.2%
Thirteenth (Tampa)	142	12,970	1.1%	10,883	11,239	96.8%
Fourteenth (Panama City)	59	5,967	1.0%	3,622	4,435	81.7%
Fifteenth (West Palm Beach)	182	8,974	2.0%	7,876	8,364	94.2%
Sixteenth (Key West)	16	719	2.2%	537	571	94.0%
Seventeenth (Ft. Lauderdale)	135	10,917	1.2%	8,142	8,577	94.9%
Eighteenth (Sanford)	125	8,320	1.5%	6,540	6,980	93.7%
Nineteenth (Ft. Pierce)	113	5,283	2.1%	4,334	4,811	90.1%
Twentieth (Ft. Myers)	118	8,228	1.4%	6,683	7,590	88.1%
Total	2,744	169,428	1.6%	133,324	148,717	89.6%

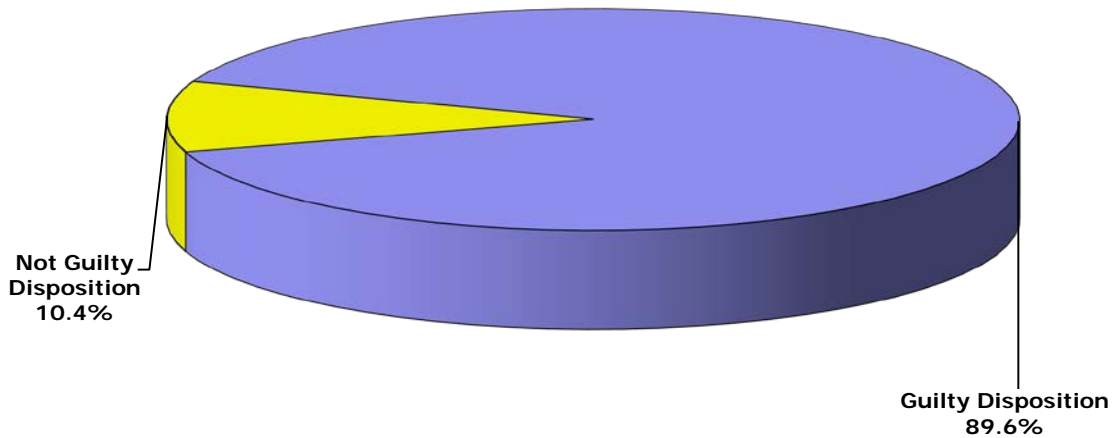
*Jury trial and guilty disposition rates are not intended as a measure of efficiency of the judiciary, state attorneys, or public defenders.

Circuit Criminal ♦ Dispositions

**CIRCUIT CRIMINAL JURY TRIAL RATE
FY 2016-17**



**CIRCUIT CRIMINAL GUILTY DISPOSITION RATE
FY 2016-17**



The Circuit Criminal division also includes other statistics such as clearance rates, reopenings, no files, appeals filed from county court, post conviction relief motions, probation revocation hearings, bond hearings, and adversary preliminary hearings. **These data are provided by the 67 clerks of court.**

Clearance Rates - The clearance rate is a useful measure of the responsiveness of a court to the demand for services, and is nationally recognized as a measure of court performance. The rate is determined by dividing the total number of cases *disposed* by the total number of cases *filed* during a specific time period. If a court received 1,000 new cases a month and disposed of 900 cases within the same month, the clearance rate for that month would be 90%. A 100% clearance rate means that a court is disposing of at least as many cases as have been filed during the reporting period. Thus, where clearance rates exceed 100%, those circuits are actually disposing of cases more quickly than cases are being filed for the period in question.

Reopenings - A reopening occurs when a case that has previously been reported as disposed is resubmitted to the court through a motion or petition.

No Files - A no file occurs when all charges against a defendant are dropped and the prosecutor did not file an information or seek an indictment.

Appeals Filed From County Court - An appeal filed from county court is a request that a case be removed from the county court and sent to the circuit court for review.

Post Conviction Relief Motions - A post conviction relief motion is a motion to vacate, set aside, or correct a sentence pursuant to rule 3.850, Florida Rules of Criminal Procedure.

Probation Revocation Hearings - A probation revocation hearing is a proceeding in which a judge determines whether a defendant's probation should be modified or revoked following an alleged violation.

Bond Hearings - A bond hearing is a proceeding in which a judge considers a defendant's pretrial release status for the purpose of setting or modifying bond or other pretrial release status.

Adversary Preliminary Hearings - An adversary preliminary hearing is a proceeding in which a judge considers evidence presented to determine whether there is sufficient cause to hold the accused for trial.

Circuit Criminal ♦ Other Statistics

CIRCUIT CRIMINAL CLEARANCE RATES
by Circuit
FY 2016-17

Circuit	Filings	Dispositions	Clearance Rates
1	11,638	10,400	89.4%
2	4,461	6,409	143.7%
3	2,760	2,502	90.7%
4	8,020	8,626	107.6%
5	9,534	8,737	91.6%
6	16,604	15,499	93.3%
7	9,182	9,210	100.3%
8	3,959	3,720	94.0%
9	12,435	12,708	102.2%
10	10,106	9,636	95.3%
11	13,155	14,230	108.2%
12	6,086	6,373	104.7%
13	12,958	12,970	100.1%
14	6,115	5,967	97.6%
15	8,740	8,974	102.7%
16	1,170	719	61.5%
17	12,524	10,917	87.2%
18	8,989	8,320	92.6%
19	5,318	5,283	99.3%
20	7,586	8,228	108.5%
Total	171,340	169,428	98.9%

**CIRCUIT CRIMINAL SPECIAL PROCEEDINGS
by Circuit
FY 2016-17**

Circuit	Reopenings	No Files	Appeal Filed From County Court	Post Conviction Relief Motions	Probation Revocation Hearings	Bond Hearings	Adversary Preliminary Hearings	Total
1	10,796	481	14	742	5,412	373	0	17,818
2	2,466	303	10	259	1,909	40	0	4,987
3	857	483	2	163	1,735	12	0	3,252
4	3,526	5,686	28	648	1,706	1,689	10	13,293
5	7,176	2,388	27	358	3,529	86	0	13,564
6	2,626	4,364	102	629	6,037	10,138	121	24,017
7	2,233	3,653	9	233	5,184	447	22	11,781
8	1,839	2,140	26	148	1,672	1,156	0	6,981
9	5,973	4,913	35	431	2,277	1,123	9	14,761
10	5,916	1,452	51	431	6,319	536	20	14,725
11	2,659	9,118	47	728	4,807	6,004	10	23,373
12	4,750	1,510	6	176	3,195	653	8	10,298
13	2,417	2,116	0	646	4,192	1,143	573	11,087
14	1,329	601	1	162	3,068	438	0	5,599
15	4,993	3,640	41	277	1,967	1,360	52	12,330
16	41	0	1	0	393	18	0	453
17	437	1,634	0	965	3,056	1,826	4	7,922
18	5,635	1,743	45	722	4,121	3,148	1	15,415
19	4,134	1,193	5	217	1,544	167	0	7,260
20	8,794	2,570	5	412	4,348	690	0	16,819
Total	78,597	49,988	455	8,347	66,471	31,047	830	235,735