

Circuit Criminal ♦ Overview

The Circuit Criminal division includes the following five categories of felony offenses: capital murder, serious crimes against persons, less serious crimes against persons, crimes against property, and drug offenses. Within these categories are the following case types:

Capital Murder - capital murder offenses

Serious Crimes Against Persons - non-capital murder (examples of non-capital murder cases include: negligent manslaughter, vehicular manslaughter, non-premeditated murder, commission of a felony which causes death, aggravated manslaughter, and other similar offenses) and sexual offenses

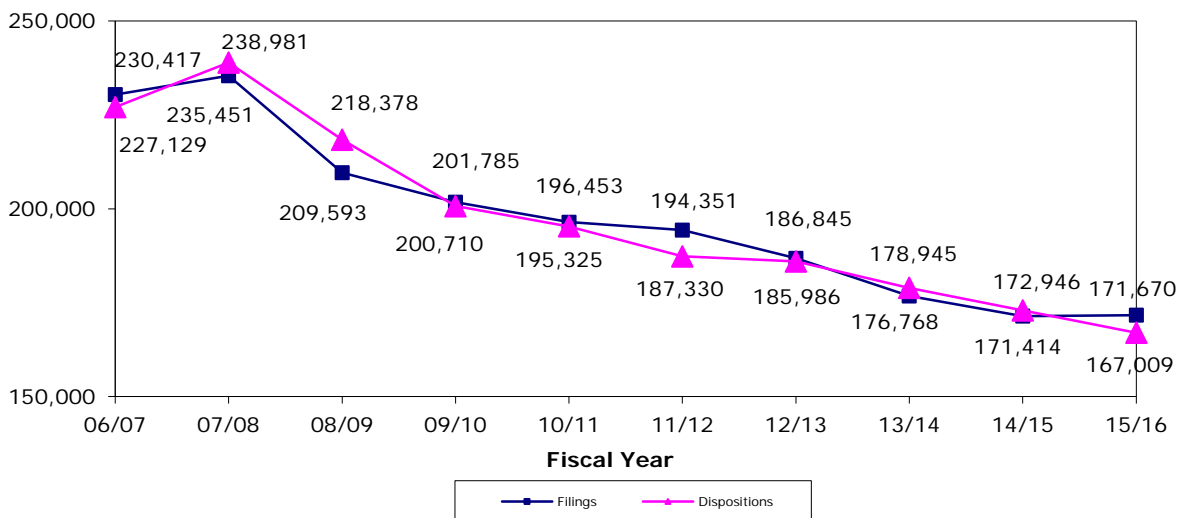
Less Serious Crimes Against Persons - robbery and other crimes against persons

Crimes Against Property - burglary, theft, forgery, fraud, worthless checks, other crimes against property, and other felony offenses (examples of other felony offenses are: weapon charges, resisting arrest, contempt of court, failure to appear, accessory after the fact, and book-making)

Drug Offenses - drug offenses

In the Circuit Criminal division, *filings* correspond to each defendant against whom an information or indictment is filed. *Dispositions* correspond to each defendant for whom a final judicial decision is rendered terminating a criminal proceeding by an acquittal, a dismissal, or a judgment stating the specific sentence (in the case of a conviction). *Charges (counts)* are defined as each individual offense with which a defendant is accused. These charges (counts) are tied directly to each filing. *Jury trials* are defined as trials in which a group of citizens is impaneled, selected, and sworn to determine the issues of fact in a case.

**CIRCUIT CRIMINAL FILINGS AND DISPOSITIONS*
FY 2006-07 to FY 2015-16**

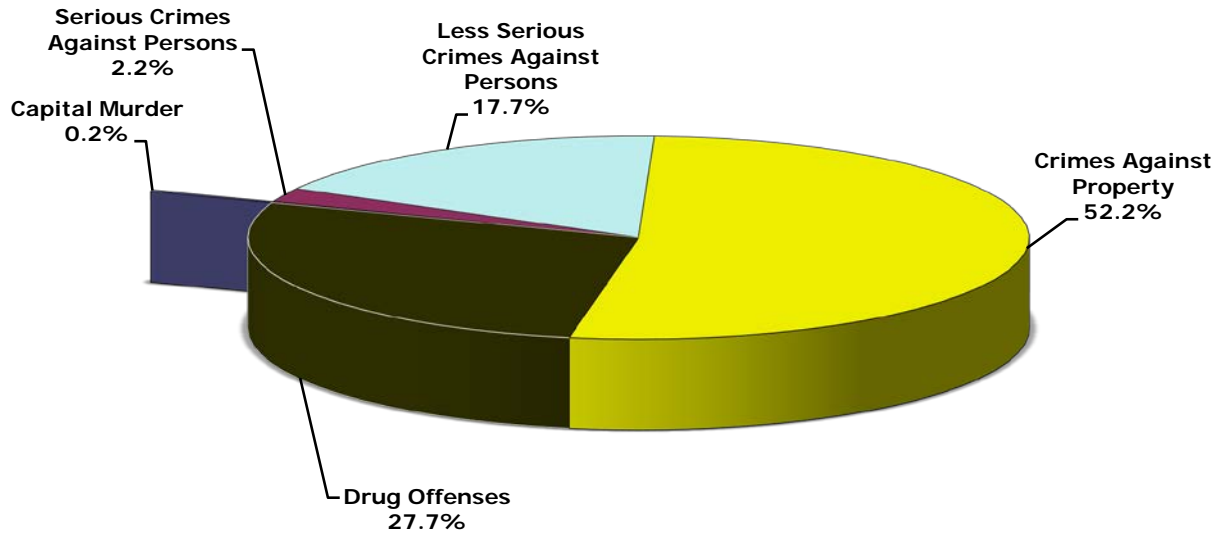


CIRCUIT CRIMINAL FILINGS
Statewide by Category/Case Type and Month
FY 2015-16

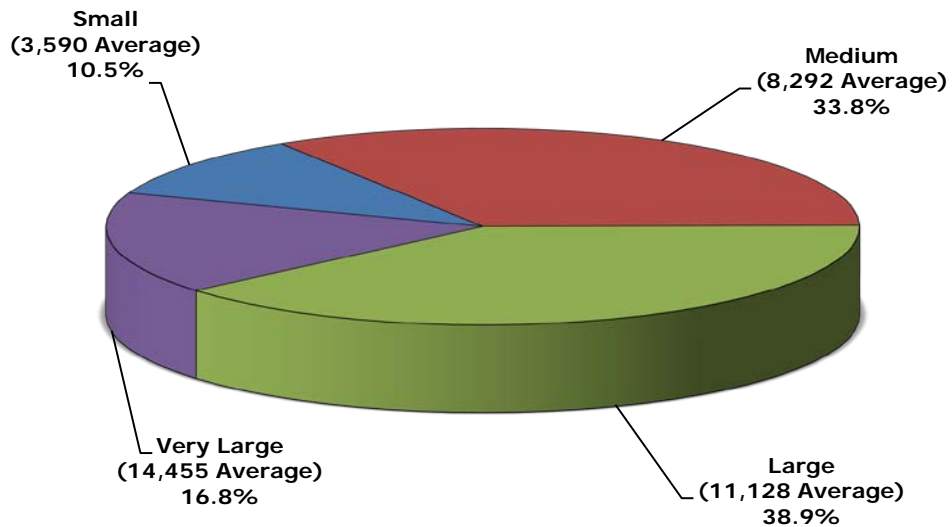
Category/ Case Type	Jul	Aug	Sep	Oct	Nov	Dec	Jan	Feb	Mar	Apr	May	Jun	Total
A. Capital Murder	32	31	34	19	26	35	36	24	27	21	24	32	341
1. Capital Murder	32	31	34	19	26	35	36	24	27	21	24	32	341
B. Serious Crimes Against Persons	358	315	287	329	271	306	271	301	339	299	378	381	3,835
1. Non-Capital Murder	101	91	96	136	97	88	83	103	116	103	126	135	1,275
2. Sexual Offenses	257	224	191	193	174	218	188	198	223	196	252	246	2,560
C. Less Serious Crimes Against Persons	2,798	2,482	2,600	2,606	2,191	2,564	2,341	2,405	2,440	2,443	2,614	2,824	30,308
1. Robbery	409	303	374	371	309	372	325	390	346	328	352	383	4,262
2. Other Crimes Against Persons	2,389	2,179	2,226	2,235	1,882	2,192	2,016	2,015	2,094	2,115	2,262	2,441	26,046
D. Crimes Against Property	8,186	7,410	7,492	7,722	6,711	7,361	7,112	7,342	7,583	7,410	7,448	7,836	89,613
1. Burglary	1,646	1,503	1,397	1,417	1,327	1,370	1,322	1,248	1,369	1,256	1,426	1,406	16,687
2. Theft, Forgery, Fraud	3,982	3,644	3,716	3,832	3,296	3,811	3,638	3,749	3,686	3,516	3,626	3,955	44,451
3. Worthless Checks	84	72	43	60	43	51	45	54	47	58	60	66	683
4. Other Crimes Against Property	149	100	125	164	115	131	129	91	133	124	124	148	1,533
5. Other	2,325	2,091	2,211	2,249	1,930	1,998	1,978	2,200	2,348	2,456	2,212	2,261	26,259
E. Drug Offenses	4,083	3,849	3,678	4,126	3,607	3,809	3,634	3,628	4,424	4,172	4,140	4,423	47,573
1. Drugs Offenses	4,083	3,849	3,678	4,126	3,607	3,809	3,634	3,628	4,424	4,172	4,140	4,423	47,573
Total	15,457	14,087	14,091	14,802	12,806	14,075	13,394	13,700	14,813	14,345	14,604	15,496	171,670

Circuit Criminal ♦ Filings

**CIRCUIT CRIMINAL FILINGS
by Category
FY 2015-16**



**CIRCUIT CRIMINAL FILINGS
by Circuit Size*
FY 2015-16**



*Small Circuits - 2nd, 3rd, 8th, 14th, 16th;
 Medium Circuits - 1st, 5th, 7th, 10th, 12th, 18th, 19th;
 Large Circuits - 4th, 6th, 9th, 13th, 15th, 20th; and
 Very Large Circuits - 11th, 17th (as defined in the Glossary).

CIRCUIT CRIMINAL FILINGS
by Circuit and Case Type
FY 2015-16

Circuit	Capital Murder	Non-Capital Murder	Sexual Offenses	Robbery	Other Crimes Against Persons	Burglary	Theft Forgery Fraud	Worthless Checks	Other Crimes Against Property	Drugs	Other	Total
1	31	50	164	229	2,105	1,221	2,664	74	138	2,495	1,452	10,623
2	8	33	102	80	986	414	1,144	51	37	1,145	788	4,788
3	20	11	49	21	405	204	522	17	24	991	386	2,650
4	8	98	142	217	1,093	904	2,195	3	61	2,409	1,611	8,741
5	3	56	178	123	1,520	859	2,444	46	87	2,527	1,451	9,294
6	22	58	150	238	1,708	1,386	4,317	131	126	4,223	2,590	14,949
7	12	37	92	196	1,618	886	1,953	69	69	2,519	1,139	8,590
8	6	27	77	104	586	341	1,011	16	31	1,216	541	3,956
9	34	134	251	523	1,969	1,321	3,761	5	118	3,403	1,761	13,280
10	34	47	168	160	1,788	1,012	2,026	15	74	2,660	1,193	9,177
11	30	262	203	626	2,310	1,301	3,898	40	121	3,887	1,962	14,640
12	7	51	126	119	760	579	2,029	6	72	1,825	761	6,335
13	19	54	120	406	2,004	1,427	3,718	75	114	3,459	1,603	12,999
14	5	16	128	67	887	481	919	18	63	1,465	1,430	5,479
15	50	74	94	322	1,059	1,153	2,332	34	51	2,622	872	8,663
16	0	8	15	15	244	100	229	7	15	314	128	1,075
17	20	120	169	395	2,021	1,222	3,753	6	125	4,023	2,415	14,269
18	21	35	102	153	1,325	720	2,279	37	66	1,894	1,849	8,481
19	8	46	96	76	735	333	1,395	25	49	1,819	964	5,546
20	3	58	134	192	923	823	1,862	8	92	2,677	1,363	8,135
Total	341	1,275	2,560	4,262	26,046	16,687	44,451	683	1,533	47,573	26,259	171,670

Circuit Criminal ◆ Filings

**CIRCUIT CRIMINAL FILINGS
by Circuit/County and Category
FY 2015-16**

Circuit/County	Capital Murder	Serious Crimes Against Persons	Less Serious Crimes Against Persons	Crimes Against Property	Drug Offenses	Total
Circuit 1	31	214	2,334	5,549	2,495	10,623
Escambia	22	107	1,271	2,963	1,017	5,380
Okaloosa	8	58	578	1,293	790	2,727
Santa Rosa	1	33	354	880	422	1,690
Walton	0	16	131	413	266	826
Circuit 2	8	135	1,066	2,434	1,145	4,788
Franklin	0	6	28	66	155	255
Gadsden	2	21	154	394	129	700
Jefferson	0	4	47	90	99	240
Leon	5	92	758	1,687	648	3,190
Liberty	0	3	29	49	28	109
Wakulla	1	9	50	148	86	294
Circuit 3	20	60	426	1,153	991	2,650
Columbia	0	21	142	444	289	896
Dixie	1	6	29	61	51	148
Hamilton	5	6	42	122	82	257
Lafayette	0	2	8	20	21	51
Madison	2	6	52	147	152	359
Suwannee	3	12	86	233	241	575
Taylor	9	7	67	126	155	364
Circuit 4	8	240	1,310	4,774	2,409	8,741
Clay	3	53	275	814	326	1,471
Duval	5	179	951	3,706	1,844	6,685
Nassau	0	8	84	254	239	585

CIRCUIT CRIMINAL FILINGS
by Circuit/County and Category
FY 2015-16

Circuit/County	Capital Murder	Serious Crimes Against Persons	Less Serious Crimes Against Persons	Crimes Against Property	Drug Offenses	Total
Circuit 5	3	234	1,643	4,887	2,527	9,294
Citrus	0	36	174	465	290	965
Hernando	0	38	307	1,207	408	1,960
Lake	1	76	614	1,433	872	2,996
Marion	2	65	379	1,426	757	2,629
Sumter	0	19	169	356	200	744
Circuit 6	22	208	1,946	8,550	4,223	14,949
Pasco	5	81	694	2,460	1,274	4,514
Pinellas	17	127	1,252	6,090	2,949	10,435
Circuit 7	12	129	1,814	4,116	2,519	8,590
Flagler	0	16	76	213	153	458
Putnam	3	16	186	578	318	1,101
St. Johns	5	25	281	656	306	1,273
Volusia	4	72	1,271	2,669	1,742	5,758
Circuit 8	6	104	690	1,940	1,216	3,956
Alachua	6	59	436	1,192	622	2,315
Baker	0	12	79	177	110	378
Bradford	0	11	54	224	241	530
Gilchrist	0	3	34	68	51	156
Levy	0	13	69	240	151	473
Union	0	6	18	39	41	104
Circuit 9	34	385	2,492	6,966	3,403	13,280
Orange	25	313	1,953	5,415	2,453	10,159
Osceola	9	72	539	1,551	950	3,121

Circuit Criminal ◆ Filings

CIRCUIT CRIMINAL FILINGS
by Circuit/County and Category
FY 2015-16

Circuit/County	Capital Murder	Serious Crimes Against Persons	Less Serious Crimes Against Persons	Crimes Against Property	Drug Offenses	Total
Circuit 10	34	215	1,948	4,320	2,660	9,177
Hardee	1	7	72	109	135	324
Highlands	1	34	198	481	256	970
Polk	32	174	1,678	3,730	2,269	7,883
Circuit 11	30	465	2,936	7,322	3,887	14,640
Miami-Dade	30	465	2,936	7,322	3,887	14,640
Circuit 12	7	177	879	3,447	1,825	6,335
Desoto	0	15	75	227	162	479
Manatee	6	78	385	1,585	746	2,800
Sarasota	1	84	419	1,635	917	3,056
Circuit 13	19	174	2,410	6,937	3,459	12,999
Hillsborough	19	174	2,410	6,937	3,459	12,999
Circuit 14	5	144	954	2,911	1,465	5,479
Bay	5	83	546	2,145	961	3,740
Calhoun	0	10	48	107	59	224
Gulf	0	4	32	75	103	214
Holmes	0	22	98	202	112	434
Jackson	0	12	181	262	134	589
Washington	0	13	49	120	96	278
Circuit 15	50	168	1,381	4,442	2,622	8,663
Palm Beach	50	168	1,381	4,442	2,622	8,663
Circuit 16	0	23	259	479	314	1,075
Monroe	0	23	259	479	314	1,075

CIRCUIT CRIMINAL FILINGS
by Circuit/County and Category
FY 2015-16

Circuit/County	Capital Murder	Serious Crimes Against Persons	Less Serious Crimes Against Persons	Crimes Against Property	Drug Offenses	Total
Circuit 17	20	289	2,416	7,521	4,023	14,269
Broward	20	289	2,416	7,521	4,023	14,269
Circuit 18	21	137	1,478	4,951	1,894	8,481
Brevard	10	83	1,011	3,114	1,183	5,401
Seminole	11	54	467	1,837	711	3,080
Circuit 19	8	142	811	2,766	1,819	5,546
Indian River	3	32	181	696	297	1,209
Martin	1	24	137	527	551	1,240
Okeechobee	1	21	95	304	245	666
St. Lucie	3	65	398	1,239	726	2,431
Circuit 20	3	192	1,115	4,148	2,677	8,135
Charlotte	0	13	162	606	554	1,335
Collier	1	33	276	802	389	1,501
Glades	0	8	19	105	20	152
Hendry	0	24	96	302	161	583
Lee	2	114	562	2,333	1,553	4,564
Total	341	3,835	30,308	89,613	47,573	171,670

Circuit Criminal ◆ Filings

CIRCUIT CRIMINAL CHARGES (COUNTS)
by Circuit/County
FY 2015-16

Circuit/County	Total Filings (Defendants)	Total Charges (Counts)	Number of Charges (Counts) per Filing
Circuit 1	10,623	23,103	2.2
Escambia	5,380	12,189	2.3
Okaloosa	2,727	5,310	1.9
Santa Rosa	1,690	3,838	2.3
Walton	826	1,766	2.1
Circuit 2	4,788	10,950	2.3
Franklin	255	391	1.5
Gadsden	700	1,195	1.7
Jefferson	240	495	2.1
Leon	3,190	8,053	2.5
Liberty	109	243	2.2
Wakulla	294	573	1.9
Circuit 3	2,650	6,102	2.3
Columbia	896	2,180	2.4
Dixie	148	271	1.8
Hamilton	257	698	2.7
Lafayette	51	113	2.2
Madison	359	993	2.8
Suwannee	575	1,200	2.1
Taylor	364	647	1.8
Circuit 4	8,741	17,570	2.0
Clay	1,471	2,495	1.7
Duval	6,685	13,952	2.1
Nassau	585	1,123	1.9

CIRCUIT CRIMINAL CHARGES (COUNTS)
by Circuit/County
FY 2015-16

Circuit/County	Total Filings (Defendants)	Total Charges (Counts)	Number of Charges (Counts) per Filing
Circuit 5	9,294	19,779	2.1
Citrus	965	2,101	2.2
Hernando	1,960	3,731	1.9
Lake	2,996	6,879	2.3
Marion	2,629	5,431	2.1
Sumter	744	1,637	2.2
Circuit 6	14,949	25,268	1.7
Pasco	4,514	8,545	1.9
Pinellas	10,435	16,723	1.6
Circuit 7	8,590	16,429	1.9
Flagler	458	1,092	2.4
Putnam	1,101	2,099	1.9
St. Johns	1,273	2,403	1.9
Volusia	5,758	10,835	1.9
Circuit 8	3,956	8,490	2.1
Alachua	2,315	4,926	2.1
Baker	378	960	2.5
Bradford	530	1,055	2.0
Gilchrist	156	321	2.1
Levy	473	973	2.1
Union	104	255	2.5
Circuit 9	13,280	29,539	2.2
Orange	10,159	22,414	2.2
Osceola	3,121	7,125	2.3

Circuit Criminal ♦ Filings

**CIRCUIT CRIMINAL CHARGES (COUNTS)
by Circuit/County
FY 2015-16**

Circuit/County	Total Filings (Defendants)	Total Charges (Counts)	Number of Charges (Counts) per Filing
Circuit 10	9,177	25,682	2.8
Hardee	324	824	2.5
Highlands	970	3,142	3.2
Polk	7,883	21,716	2.8
Circuit 11	14,640	32,976	2.3
Miami-Dade	14,640	32,976	2.3
Circuit 12	6,335	13,934	2.2
Desoto	479	1,317	2.7
Manatee	2,800	5,852	2.1
Sarasota	3,056	6,765	2.2
Circuit 13	12,999	27,845	2.1
Hillsborough	12,999	27,845	2.1
Circuit 14	5,479	11,296	2.1
Bay	3,740	7,884	2.1
Calhoun	224	384	1.7
Gulf	214	422	2.0
Holmes	434	795	1.8
Jackson	589	1,261	2.1
Washington	278	550	2.0
Circuit 15	8,663	17,850	2.1
Palm Beach	8,663	17,850	2.1
Circuit 16	1,075	2,498	2.3
Monroe	1,075	2,498	2.3

CIRCUIT CRIMINAL CHARGES (COUNTS)
by Circuit/County
FY 2015-16

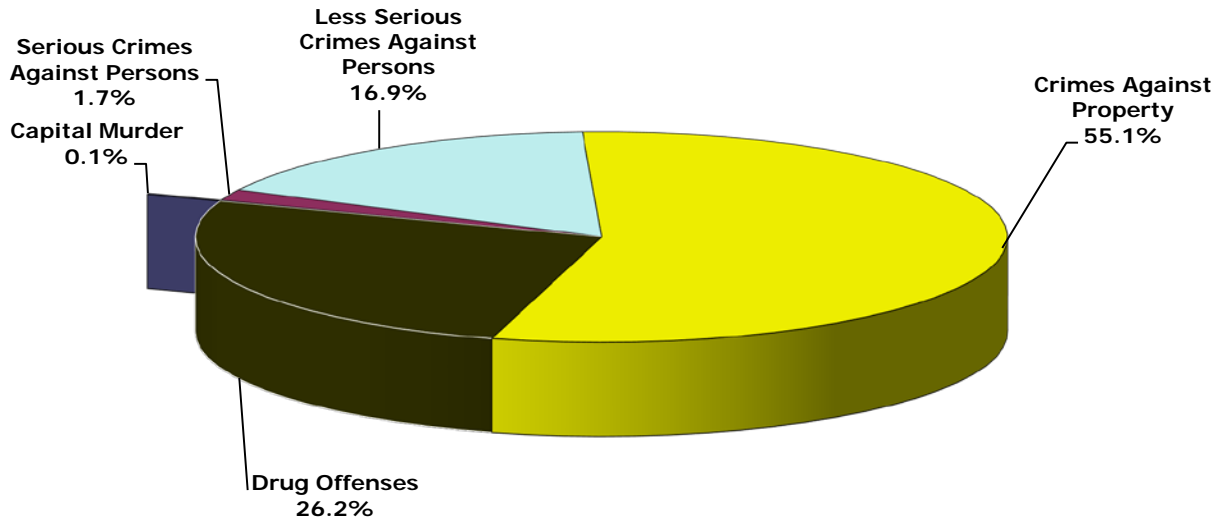
Circuit/County	Total Filings (Defendants)	Total Charges (Counts)	Number of Charges (Counts) per Filing
Circuit 17	14,269	28,991	2.0
Broward	14,269	28,991	2.0
Circuit 18	8,481	18,166	2.1
Brevard	5,401	12,178	2.3
Seminole	3,080	5,988	1.9
Circuit 19	5,546	15,877	2.9
Indian River	1,209	2,748	2.3
Martin	1,240	3,111	2.5
Okeechobee	666	1,556	2.3
St. Lucie	2,431	8,462	3.5
Circuit 20	8,135	17,571	2.2
Charlotte	1,335	3,275	2.5
Collier	1,501	3,118	2.1
Glades	152	325	2.1
Hendry	583	1,343	2.3
Lee	4,564	9,510	2.1
Total	171,670	369,916	2.2

Circuit Criminal ♦ Dispositions

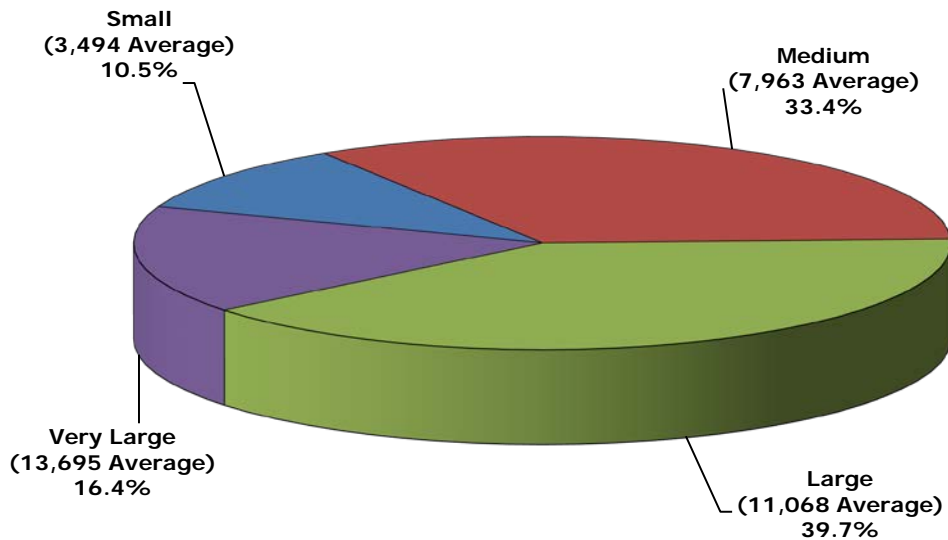
CIRCUIT CRIMINAL DISPOSITIONS
Statewide by Category/Case Type and Month
FY 2015-16

Category/ Case Type	Jul	Aug	Sep	Oct	Nov	Dec	Jan	Feb	Mar	Apr	May	Jun	Total
A. Capital Murder	15	17	17	20	15	12	16	15	17	27	22	16	209
1. Capital Murder	15	17	17	20	15	12	16	15	17	27	22	16	209
B. Serious Crimes Against Persons	254	224	278	294	199	199	240	242	219	239	218	251	2,857
1. Non-Capital Murder	76	75	90	99	74	63	92	91	77	87	87	91	1,002
2. Sexual Offenses	178	149	188	195	125	136	148	151	142	152	131	160	1,855
C. Less Serious Crimes Against Persons	2,407	2,180	2,346	2,508	2,074	1,987	2,336	2,369	2,555	2,427	2,375	2,584	28,148
1. Robbery	336	285	337	387	289	280	266	349	302	336	364	353	3,884
2. Other Crimes Against Persons	2,071	1,895	2,009	2,121	1,785	1,707	2,070	2,020	2,253	2,091	2,011	2,231	24,264
D. Crimes Against Property	8,178	7,406	7,626	8,181	6,813	6,622	7,547	7,684	8,323	7,995	7,425	8,213	92,013
1. Burglary	1,375	1,265	1,337	1,469	1,222	1,205	1,373	1,340	1,387	1,329	1,266	1,406	15,974
2. Theft, Forgery, Fraud	3,901	3,520	3,631	3,857	3,311	3,157	3,515	3,691	4,156	3,903	3,500	3,993	44,135
3. Worthless Checks	73	67	48	171	66	85	59	69	66	87	57	71	919
4. Other Crimes Against Property	145	117	130	127	110	124	150	130	133	140	126	134	1,566
5. Other	2,684	2,437	2,480	2,557	2,104	2,051	2,450	2,454	2,581	2,536	2,476	2,609	29,419
E. Drug Offenses	3,670	3,438	3,772	3,790	3,280	3,129	3,689	3,571	3,855	3,772	3,726	4,090	43,782
1. Drugs Offenses	3,670	3,438	3,772	3,790	3,280	3,129	3,689	3,571	3,855	3,772	3,726	4,090	43,782
Total	14,524	13,265	14,039	14,793	12,381	11,949	13,828	13,881	14,969	14,460	13,766	15,154	167,009

CIRCUIT CRIMINAL DISPOSITIONS
by Category
FY 2015-16



CIRCUIT CRIMINAL DISPOSITIONS
by Circuit Size*
FY 2015-16



*Small Circuits - 2nd, 3rd, 8th, 14th, 16th;
Medium Circuits - 1st, 5th, 7th, 10th, 12th, 18th, 19th;
Large Circuits - 4th, 6th, 9th, 13th, 15th, 20th; and
Very Large Circuits - 11th, 17th (as defined in the Glossary).

Circuit Criminal ♦ Dispositions

CIRCUIT CRIMINAL DISPOSITIONS
by Circuit and Case Type
FY 2015-16

Circuit	Capital Murder	Non-Capital Murder	Sexual Offenses	Robbery	Other Crimes Against Persons	Burglary	Theft Forgery Fraud	Worthless Checks	Other Crimes Against Property	Drugs	Other	Total
1	12	32	124	137	1,846	913	2,541	51	129	2,066	1,701	9,552
2	10	31	77	96	964	493	1,340	96	48	1,058	871	5,084
3	3	7	19	22	384	195	506	19	35	909	453	2,552
4	15	114	141	276	1,192	1,091	2,479	120	69	2,462	1,748	9,707
5	4	39	144	112	1,356	851	2,493	32	94	2,241	1,547	8,913
6	13	51	95	266	1,628	1,321	4,220	166	126	4,289	2,489	14,664
7	3	43	96	197	1,565	1,030	2,291	100	81	2,591	1,382	9,379
8	1	19	71	61	577	346	959	26	34	1,139	616	3,849
9	26	84	188	446	1,593	1,044	3,688	9	114	3,388	2,167	12,747
10	9	50	115	137	1,737	792	1,972	22	85	1,389	2,282	8,590
11	14	202	133	573	2,300	1,283	3,805	41	132	3,683	2,187	14,353
12	5	29	83	90	702	451	1,982	19	66	1,575	757	5,759
13	13	51	67	330	1,731	1,445	3,711	44	117	3,230	1,569	12,308
14	0	25	68	44	748	404	865	49	47	1,310	1,626	5,186
15	25	43	78	329	1,206	1,143	2,257	38	59	2,614	1,099	8,891
16	0	1	8	12	156	87	165	5	11	241	112	798
17	22	84	89	354	1,763	1,251	3,273	15	106	3,724	2,356	13,037
18	20	20	87	133	1,201	647	2,219	41	73	1,762	1,822	8,025
19	8	30	67	67	797	368	1,384	20	56	1,590	1,137	5,524
20	6	47	105	202	818	819	1,985	6	84	2,521	1,498	8,091
Total	209	1,002	1,855	3,884	24,264	15,974	44,135	919	1,566	43,782	29,419	167,009

CIRCUIT CRIMINAL DISPOSITIONS
by Circuit/County and Category
FY 2015-16

Circuit/County	Capital Murder	Serious Crimes Against Persons	Less Serious Crimes Against Persons	Crimes Against Property	Drug Offenses	Total
Circuit 1	12	156	1,983	5,335	2,066	9,552
Escambia	10	69	1,015	2,620	785	4,499
Okaloosa	0	38	570	1,413	671	2,692
Santa Rosa	1	32	283	876	372	1,564
Walton	1	17	115	426	238	797
Circuit 2	10	108	1,060	2,848	1,058	5,084
Franklin	0	7	28	62	121	218
Gadsden	1	15	153	352	144	665
Jefferson	0	0	32	87	78	197
Leon	9	80	758	2,153	628	3,628
Liberty	0	4	27	43	25	99
Wakulla	0	2	62	151	62	277
Circuit 3	3	26	406	1,208	909	2,552
Columbia	1	7	130	483	257	878
Dixie	1	2	25	57	42	127
Hamilton	0	1	32	131	71	235
Lafayette	0	2	6	24	27	59
Madison	0	3	55	143	132	333
Suwannee	1	7	95	238	263	604
Taylor	0	4	63	132	117	316
Circuit 4	15	255	1,468	5,507	2,462	9,707
Clay	0	57	328	1,082	369	1,836
Duval	15	190	1,047	3,946	1,826	7,024
Nassau	0	8	93	479	267	847

Circuit Criminal ♦ Dispositions

CIRCUIT CRIMINAL DISPOSITIONS
by Circuit/County and Category
FY 2015-16

Circuit/County	Capital Murder	Serious Crimes Against Persons	Less Serious Crimes Against Persons	Crimes Against Property	Drug Offenses	Total
Circuit 5	4	183	1,468	5,017	2,241	8,913
Citrus	0	44	187	520	313	1,064
Hernando	0	22	286	1,191	390	1,889
Lake	3	42	497	1,301	622	2,465
Marion	1	56	367	1,682	764	2,870
Sumter	0	19	131	323	152	625
Circuit 6	13	146	1,894	8,322	4,289	14,664
Pasco	5	53	602	2,370	1,269	4,299
Pinellas	8	93	1,292	5,952	3,020	10,365
Circuit 7	3	139	1,762	4,884	2,591	9,379
Flagler	0	14	80	243	201	538
Putnam	0	26	163	580	314	1,083
St. Johns	0	25	287	718	280	1,310
Volusia	3	74	1,232	3,343	1,796	6,448
Circuit 8	1	90	638	1,981	1,139	3,849
Alachua	1	40	375	1,161	589	2,166
Baker	0	16	92	211	129	448
Bradford	0	13	51	207	175	446
Gilchrist	0	3	36	94	58	191
Levy	0	13	60	259	144	476
Union	0	5	24	49	44	122
Circuit 9	26	272	2,039	7,022	3,388	12,747
Orange	18	216	1,626	5,253	2,316	9,429
Osceola	8	56	413	1,769	1,072	3,318

CIRCUIT CRIMINAL DISPOSITIONS
by Circuit/County and Category
FY 2015-16

Circuit/County	Capital Murder	Serious Crimes Against Persons	Less Serious Crimes Against Persons	Crimes Against Property	Drug Offenses	Total
Circuit 10	9	165	1,874	5,153	1,389	8,590
Hardee	0	5	70	151	154	380
Highlands	1	12	160	468	142	783
Polk	8	148	1,644	4,534	1,093	7,427
Circuit 11	14	335	2,873	7,448	3,683	14,353
Miami-Dade	14	335	2,873	7,448	3,683	14,353
Circuit 12	5	112	792	3,275	1,575	5,759
Desoto	0	14	66	232	175	487
Manatee	0	34	288	1,252	506	2,080
Sarasota	5	64	438	1,791	894	3,192
Circuit 13	13	118	2,061	6,886	3,230	12,308
Hillsborough	13	118	2,061	6,886	3,230	12,308
Circuit 14	0	93	792	2,991	1,310	5,186
Bay	0	44	423	2,180	798	3,445
Calhoun	0	4	38	103	54	199
Gulf	0	3	30	79	153	265
Holmes	0	7	99	226	115	447
Jackson	0	15	158	252	89	514
Washington	0	20	44	151	101	316
Circuit 15	25	121	1,535	4,596	2,614	8,891
Palm Beach	25	121	1,535	4,596	2,614	8,891
Circuit 16	0	9	168	380	241	798
Monroe	0	9	168	380	241	798

Circuit Criminal ♦ Dispositions

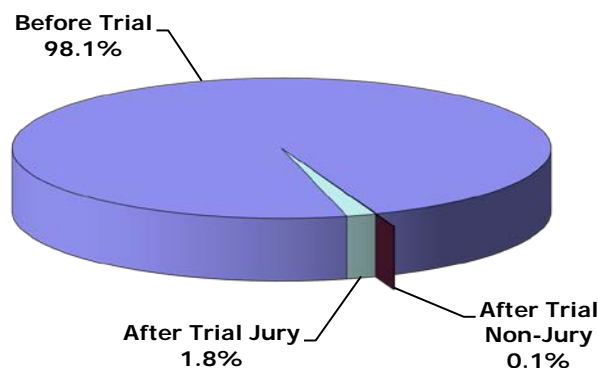
**CIRCUIT CRIMINAL DISPOSITIONS
by Circuit/County and Category
FY 2015-16**

Circuit/County	Capital Murder	Serious Crimes Against Persons	Less Serious Crimes Against Persons	Crimes Against Property	Drug Offenses	Total
Circuit 17	22	173	2,117	7,001	3,724	13,037
Broward	22	173	2,117	7,001	3,724	13,037
Circuit 18	20	107	1,334	4,802	1,762	8,025
Brevard	7	65	923	3,192	1,145	5,332
Seminole	13	42	411	1,610	617	2,693
Circuit 19	8	97	864	2,965	1,590	5,524
Indian River	0	22	178	767	227	1,194
Martin	0	11	128	586	510	1,235
Okeechobee	4	10	91	310	195	610
St. Lucie	4	54	467	1,302	658	2,485
Circuit 20	6	152	1,020	4,392	2,521	8,091
Charlotte	1	11	146	812	588	1,558
Collier	0	43	270	877	375	1,565
Glades	0	4	25	104	28	161
Hendry	0	9	29	81	82	201
Lee	5	85	550	2,518	1,448	4,606
Total	209	2,857	28,148	92,013	43,782	167,009

CIRCUIT CRIMINAL DISPOSITIONS
Statewide by Disposition Type and Case Type
FY 2015-16

Disposition Type	Capital Murder	Non-Capital Murder	Sexual Offenses	Robbery	Other Crimes Against Persons	Burglary	Theft Forgery Fraud	Worthless Checks	Other Crimes Against Property	Drugs	Other	Total
A. Before Trial	72	757	1,552	3,690	23,545	15,639	43,885	919	1,543	43,415	28,940	163,957
1. Speedy Trial	0	0	0	0	0	0	0	0	0	0	0	0
2. Dismissed	15	76	227	393	2,725	1,024	3,007	407	172	3,337	1,438	12,821
3. Transferred	0	3	23	24	975	177	516	2	92	530	4,376	6,718
4. Plea	38	622	1,193	3,116	17,574	13,696	35,506	407	1,092	36,199	22,313	131,756
5. Other*	19	56	109	157	2,271	742	4,856	103	187	3,349	813	12,662
B. After Trial Non-Jury	1	2	3	3	29	11	16	0	5	14	42	126
1. Acquittal/Dismissal	1	2	0	2	14	4	7	0	4	5	10	49
2. Plea	0	0	1	0	4	3	3	0	1	5	17	34
3. Conviction	0	0	2	1	11	4	6	0	0	4	15	43
C. After Trial Jury	136	243	300	191	690	324	234	0	18	353	437	2,926
1. Acquittal/Dismissal	4	51	69	49	216	72	61	0	7	72	97	698
2. Plea	3	10	12	7	41	21	27	0	0	27	35	183
3. Conviction	129	182	219	135	433	231	146	0	11	254	305	2,045
Total	209	1,002	1,855	3,884	24,264	15,974	44,135	919	1,566	43,782	29,419	167,009

CIRCUIT CRIMINAL DISPOSITIONS
by Disposition Type
FY 2015-16



*The disposition type "Other" is used to report cases disposed for: defendants placed on deferred prosecution or other pretrial diversion or probation programs approved after an information or an indictment is filed, defendants declared mentally or physically unable to stand trial, cases disposed upon estreatment of a bond, cases that are nolle prosequi (no further prosecution) for administrative reasons, or similar matters.

Circuit Criminal ♦ Dispositions

CIRCUIT CRIMINAL JURY TRIAL DISPOSITIONS
by Circuit
FY 2015-16

Circuit (Circuit Seat)	Acquittals/Dismissals	Pleas	Convictions	Total
First (Pensacola)	33	15	114	162
Second (Tallahassee)	56	1	161	218
Third (Lake City)	5	0	18	23
Fourth (Jacksonville)	19	11	156	186
Fifth (Tavares)	22	1	38	61
Sixth (Clearwater)	47	7	128	182
Seventh (Daytona Beach)	31	8	102	141
Eighth (Gainesville)	9	15	32	56
Ninth (Orlando)	101	0	166	267
Tenth (Bartow)	53	2	202	257
Eleventh (Miami-Dade)	67	47	118	232
Twelfth (Sarasota)	23	13	88	124
Thirteenth (Tampa)	36	1	111	148
Fourteenth (Panama City)	8	2	29	39
Fifteenth (West Palm Beach)	45	4	113	162
Sixteenth (Key West)	2	4	12	18
Seventeenth (Ft. Lauderdale)	80	14	129	223
Eighteenth (Sanford)	20	25	86	131
Nineteenth (Ft. Pierce)	16	7	102	125
Twentieth (Ft. Myers)	25	6	140	171
Total	698	183	2,045	2,926

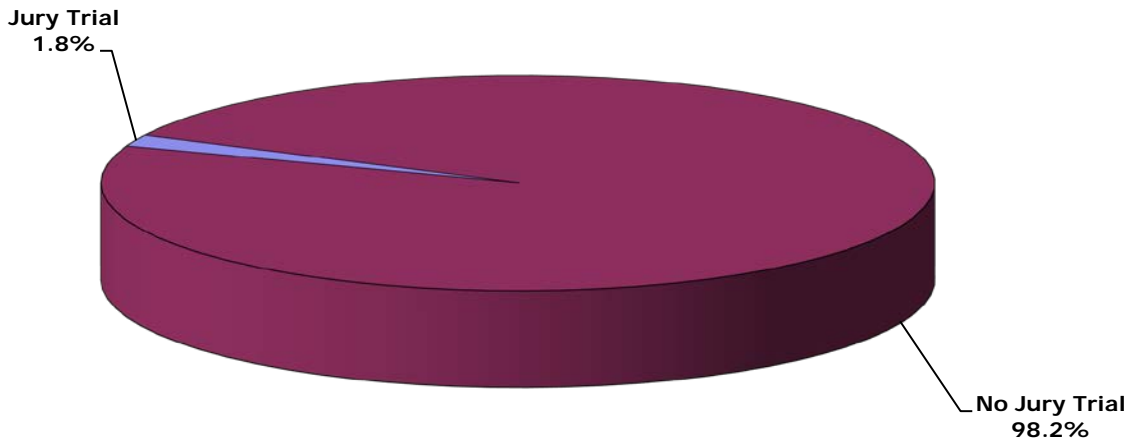
**CIRCUIT CRIMINAL JURY TRIAL and
GUILTY DISPOSITION RATES*
by Circuit
FY 2015-16**

Circuit (Circuit Seat)	Jury Trials (includes Acquittal/ Dismissal, Pleas, and Convictions)	Total Dispositions	Jury Trial Rates	GUILTY Dispositions (includes Pleas and Convictions)	Total Dispositions (excludes Transferred and Other)	GUILTY Disposition Rates
First (Pensacola)	162	9,552	1.7%	7,548	8,953	84.3%
Second (Tallahassee)	218	5,084	4.3%	4,065	4,732	85.9%
Third (Lake City)	23	2,552	0.9%	1,903	2,246	84.7%
Fourth (Jacksonville)	186	9,707	1.9%	8,700	9,269	93.9%
Fifth (Tavares)	61	8,913	0.7%	7,479	8,264	90.5%
Sixth (Clearwater)	182	14,664	1.2%	12,805	13,487	94.9%
Seventh (Daytona Beach)	141	9,379	1.5%	8,176	8,640	94.6%
Eighth (Gainesville)	56	3,849	1.5%	3,025	3,381	89.5%
Ninth (Orlando)	267	12,747	2.1%	9,575	11,758	81.4%
Tenth (Bartow)	257	8,590	3.0%	7,086	7,675	92.3%
Eleventh (Miami-Dade)	232	14,353	1.6%	10,197	11,257	90.6%
Twelfth (Sarasota)	124	5,759	2.2%	4,658	5,201	89.6%
Thirteenth (Tampa)	148	12,308	1.2%	10,579	10,846	97.5%
Fourteenth (Panama City)	39	5,186	0.8%	3,278	3,902	84.0%
Fifteenth (West Palm Beach)	162	8,891	1.8%	7,664	8,232	93.1%
Sixteenth (Key West)	18	798	2.3%	622	675	92.1%
Seventeenth (Ft. Lauderdale)	223	13,037	1.7%	9,337	9,833	95.0%
Eighteenth (Sanford)	131	8,025	1.6%	6,350	6,803	93.3%
Nineteenth (Ft. Pierce)	125	5,524	2.3%	4,529	5,006	90.5%
Twentieth (Ft. Myers)	171	8,091	2.1%	6,485	7,469	86.8%
Total	2,926	167,009	1.8%	134,061	147,629	90.8%

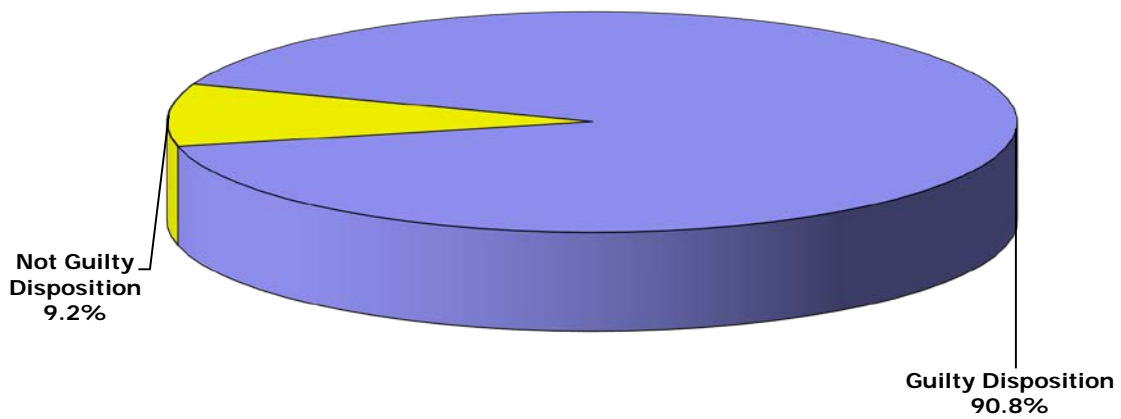
*Jury trial and guilty disposition rates are not intended as a measure of efficiency of the judiciary, state attorneys, or public defenders.

Circuit Criminal ♦ Dispositions

CIRCUIT CRIMINAL JURY TRIAL RATE
FY 2015-16



CIRCUIT CRIMINAL GUILTY DISPOSITION RATE
FY 2015-16



The Circuit Criminal division also includes other statistics such as clearance rates, reopenings, no files, appeals filed from county court, post conviction relief motions, probation revocation hearings, bond hearings, and adversary preliminary hearings. **These data are provided by the 67 clerks of court. However, special proceedings data is not audited for accuracy by the OSCA.**

Clearance Rates - The clearance rate is a useful measure of the responsiveness of a court to the demand for services, and is nationally recognized as a measure of court performance. The rate is determined by dividing the total number of cases *disposed* by the total number of cases *filed* during a specific time period. If a court received 1,000 new cases a month and disposed of 900 cases within the same month, the clearance rate for that month would be 90%. A 100% clearance rate means that a court is disposing of at least as many cases as have been filed during the reporting period. Thus, where clearance rates exceed 100%, those circuits are actually disposing of cases more quickly than cases are being filed for the period in question.

Reopenings - A reopening occurs when a case that has previously been reported as disposed is resubmitted to the court through a motion or petition.

No Files - A no file occurs when all charges against a defendant are dropped and the prosecutor did not file an information or seek an indictment.

Appeals Filed From County Court - An appeal filed from county court is a request that a case be removed from the county court and sent to the circuit court for review.

Post Conviction Relief Motions - A post conviction relief motion is a motion to vacate, set aside, or correct a sentence pursuant to rule 3.850, Florida Rules of Criminal Procedure.

Probation Revocation Hearings - A probation revocation hearing is a proceeding in which a judge determines whether a defendant's probation should be modified or revoked following an alleged violation.

Bond Hearings - A bond hearing is a proceeding in which a judge considers a defendant's pretrial release status for the purpose of setting or modifying bond or other pretrial release status.

Adversary Preliminary Hearings - An adversary preliminary hearing is a proceeding in which a judge considers evidence presented to determine whether there is sufficient cause to hold the accused for trial.

Circuit Criminal ◆ Other Statistics

CIRCUIT CRIMINAL CLEARANCE RATES
by Circuit
FY 2015-16

Circuit	Filings	Dispositions	Clearance Rates
1	10,623	9,552	89.9%
2	4,788	5,084	106.2%
3	2,650	2,552	96.3%
4	8,741	9,707	111.1%
5	9,294	8,913	95.9%
6	14,949	14,664	98.1%
7	8,590	9,379	109.2%
8	3,956	3,849	97.3%
9	13,280	12,747	96.0%
10	9,177	8,590	93.6%
11	14,640	14,353	98.0%
12	6,335	5,759	90.9%
13	12,999	12,308	94.7%
14	5,479	5,186	94.7%
15	8,663	8,891	102.6%
16	1,075	798	74.2%
17	14,269	13,037	91.4%
18	8,481	8,025	94.6%
19	5,546	5,524	99.6%
20	8,135	8,091	99.5%
Total	171,670	167,009	97.3%

CIRCUIT CRIMINAL SPECIAL PROCEEDINGS
by Circuit
FY 2015-16

Circuit	Reopenings	No Files	Appeal Filed From County Court	Post Conviction Relief Motions	Probation Revocation Hearings	Bond Hearings	Adversary Preliminary Hearings	Total
1	8,403	404	11	750	4,676	385	0	14,629
2	2,187	340	4	271	1,810	55	0	4,667
3	805	428	3	179	1,736	12	0	3,163
4	4,028	5,039	61	672	1,986	1,960	26	13,772
5	7,084	2,463	16	383	3,381	119	0	13,446
6	844	3,464	63	517	5,949	10,762	0	21,599
7	2,377	3,678	11	278	4,587	421	14	11,366
8	1,913	1,888	24	132	1,772	1,119	0	6,848
9	6,459	4,561	40	389	2,587	823	1	14,860
10	5,157	1,329	81	348	4,912	410	28	12,265
11	3,161	9,176	58	630	5,212	6,275	4	24,516
12	4,840	1,534	2	136	3,022	531	6	10,071
13	191	2,093	0	649	5,636	847	705	10,121
14	956	503	3	95	2,798	286	0	4,641
15	5,194	4,051	65	307	2,064	1,345	53	13,079
16	59	0	0	1	376	23	0	459
17	507	1,951	0	886	3,174	2,187	2	8,707
18	5,605	1,503	39	592	4,431	3,241	2	15,413
19	3,986	1,309	7	242	1,616	110	0	7,270
20	8,527	2,893	11	660	4,431	797	0	17,319
Total	72,283	48,607	499	8,117	66,156	31,708	841	228,211