

Circuit Probate Overview

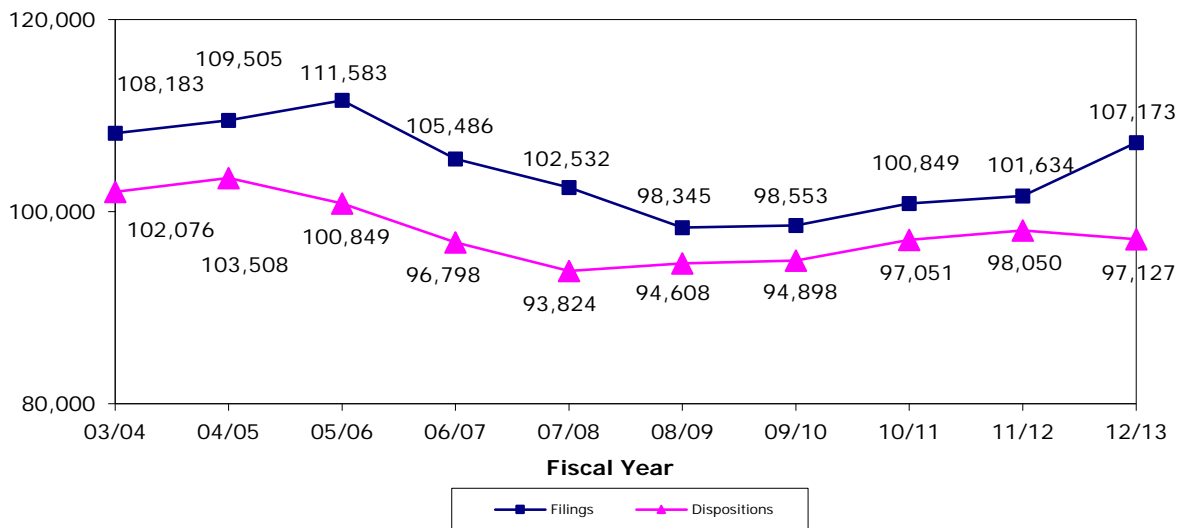
The Circuit Probate division includes the following two categories of probate cases: probate and mental health and trust and guardianship. Within these categories are the following case types:

Probate and Mental Health - probate, Baker Act, substance abuse, and other social cases

Trust and Guardianship - adult and minor guardianship and trust

In the Circuit Probate division, *filings* correspond to each petition filed. *Dispositions* correspond to each petition disposed.

CIRCUIT PROBATE FILINGS AND DISPOSITIONS FY 2003-04 to FY 2012-13

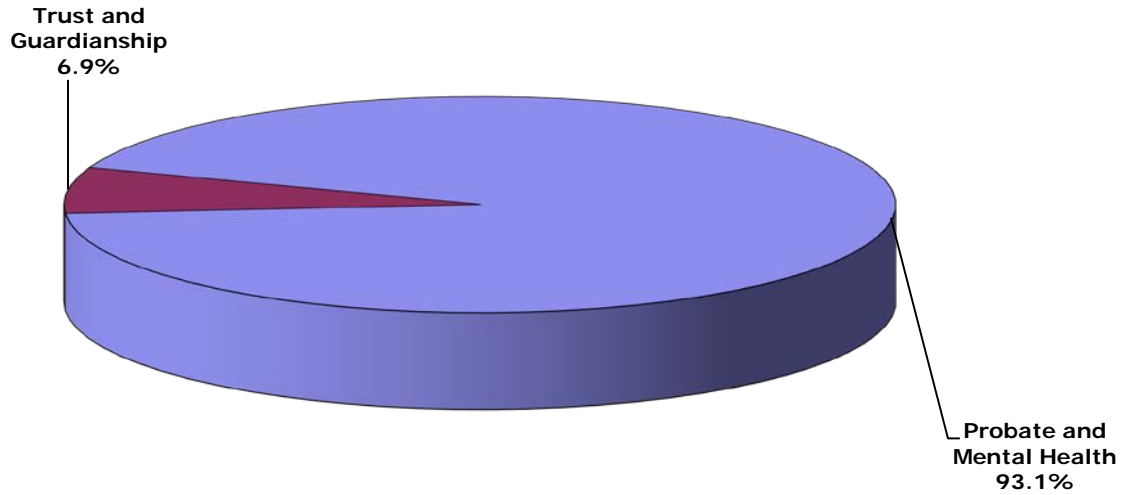


CIRCUIT PROBATE FILINGS
Statewide by Category/Case Type and Month
FY 2012-13

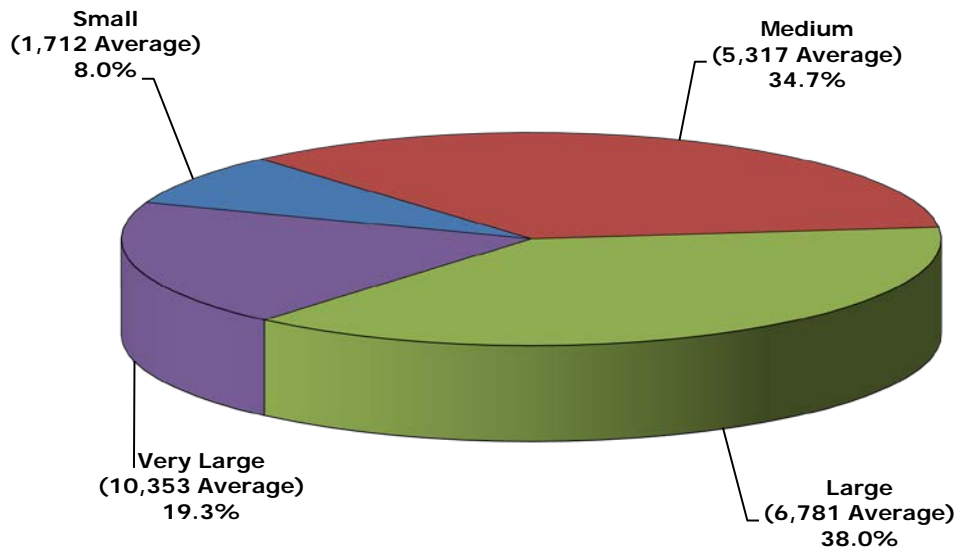
Category/ Case Type	Jul	Aug	Sep	Oct	Nov	Dec	Jan	Feb	Mar	Apr	May	Jun	Total
A. Probate and Mental Health	8,069	8,433	7,292	8,720	7,420	7,125	8,647	8,199	8,730	9,553	9,287	8,294	99,769
1. Probate	4,052	4,243	3,619	4,374	3,829	3,470	4,250	4,158	4,642	4,545	4,613	4,219	50,014
2. Baker Act	2,887	2,993	2,660	3,159	2,575	2,751	3,240	2,915	2,910	3,674	3,370	2,878	36,012
3. Substance Abuse	745	776	649	787	642	593	814	762	757	900	886	781	9,092
4. Other Social Cases	385	421	364	400	374	311	343	364	421	434	418	416	4,651
B. Trust and Guardianship	595	629	541	683	608	584	540	571	659	672	692	630	7,404
1. Guardianship	520	545	476	585	512	485	460	506	581	574	593	544	6,381
2. Trust	75	84	65	98	96	99	80	65	78	98	99	86	1,023
Total	8,664	9,062	7,833	9,403	8,028	7,709	9,187	8,770	9,389	10,225	9,979	8,924	107,173

Circuit Probate ♦ Filings

**CIRCUIT PROBATE FILINGS
by Category
FY 2012-13**



**CIRCUIT PROBATE FILINGS
by Circuit Size*
FY 2012-13**



*Small Circuits - 2nd, 3rd, 8th, 14th, 16th;
 Medium Circuits - 1st, 5th, 7th, 10th, 12th, 18th, 19th;
 Large Circuits - 4th, 6th, 9th, 13th, 15th, 20th; and
 Very Large Circuits - 11th, 17th (as defined in the Glossary).

CIRCUIT PROBATE FILINGS
by Circuit and Case Type
FY 2012-13

Circuit	Probate	Baker Act	Substance Abuse	Other Social Cases	Guardianship	Trust	Total
1	1,847	2,031	451	128	239	67	4,763
2	969	1,641	55	277	171	23	3,136
3	607	205	212	15	49	5	1,093
4	2,309	2,175	417	207	412	59	5,579
5	3,797	2,150	228	400	421	16	7,012
6	4,710	2,974	127	401	471	95	8,778
7	3,000	1,447	576	100	321	27	5,471
8	814	1,032	149	104	72	18	2,189
9	2,222	1,763	676	246	391	42	5,340
10	2,083	1,859	365	204	276	28	4,815
11	3,864	4,882	835	917	835	58	11,391
12	2,873	1,259	1,375	164	274	57	6,002
13	2,356	2,755	858	250	309	83	6,611
14	919	424	208	61	77	7	1,696
15	4,531	1,319	696	246	482	211	7,485
16	345	30	51	6	16	0	448
17	3,839	3,845	805	345	413	68	9,315
18	2,481	1,202	632	220	444	39	5,018
19	2,206	1,351	197	96	211	80	4,141
20	4,242	1,668	179	264	497	40	6,890
Total	50,014	36,012	9,092	4,651	6,381	1,023	107,173

Circuit Probate ◆ Filings

CIRCUIT PROBATE FILINGS
by Circuit/County and Category
FY 2012-13

Circuit/County	Probate and Mental Health	Trust and Guardianship	Total
Circuit 1	4,457	306	4,763
Escambia	2,639	114	2,753
Okaloosa	1,070	70	1,140
Santa Rosa	520	91	611
Walton	228	31	259
Circuit 2	2,942	194	3,136
Franklin	77	4	81
Gadsden	410	84	494
Jefferson	57	10	67
Leon	2,270	85	2,355
Liberty	23	2	25
Wakulla	105	9	114
Circuit 3	1,039	54	1,093
Columbia	446	28	474
Dixie	74	9	83
Hamilton	45	2	47
Lafayette	26	0	26
Madison	97	3	100
Suwannee	210	8	218
Taylor	141	4	145
Circuit 4	5,108	471	5,579
Clay	506	69	575
Duval	4,394	382	4,776
Nassau	208	20	228

CIRCUIT PROBATE FILINGS
by Circuit/County and Category
FY 2012-13

Circuit/County	Probate and Mental Health	Trust and Guardianship	Total
Circuit 5	6,575	437	7,012
Citrus	780	68	848
Hernando	1,798	105	1,903
Lake	1,563	87	1,650
Marion	2,077	155	2,232
Sumter	357	22	379
Circuit 6	8,212	566	8,778
Pasco	2,435	117	2,552
Pinellas	5,777	449	6,226
Circuit 7	5,123	348	5,471
Flagler	431	107	538
Putnam	318	19	337
St. Johns	739	76	815
Volusia	3,635	146	3,781
Circuit 8	2,099	90	2,189
Alachua	1,534	60	1,594
Baker	151	7	158
Bradford	92	4	96
Gilchrist	72	1	73
Levy	171	13	184
Union	79	5	84
Circuit 9	4,907	433	5,340
Orange	3,914	332	4,246
Osceola	993	101	1,094

Circuit Probate ♦ Filings

**CIRCUIT PROBATE FILINGS
by Circuit/County and Category
FY 2012-13**

Circuit/County	Probate and Mental Health	Trust and Guardianship	Total
Circuit 10	4,511	304	4,815
Hardee	77	22	99
Highlands	967	34	1,001
Polk	3,467	248	3,715
Circuit 11	10,498	893	11,391
Miami-Dade	10,498	893	11,391
Circuit 12	5,671	331	6,002
Desoto	93	11	104
Manatee	1,613	89	1,702
Sarasota	3,965	231	4,196
Circuit 13	6,219	392	6,611
Hillsborough	6,219	392	6,611
Circuit 14	1,612	84	1,696
Bay	980	50	1,030
Calhoun	50	3	53
Gulf	103	6	109
Holmes	80	5	85
Jackson	291	14	305
Washington	108	6	114
Circuit 15	6,792	693	7,485
Palm Beach	6,792	693	7,485
Circuit 16	432	16	448
Monroe	432	16	448

CIRCUIT PROBATE FILINGS
by Circuit/County and Category
FY 2012-13

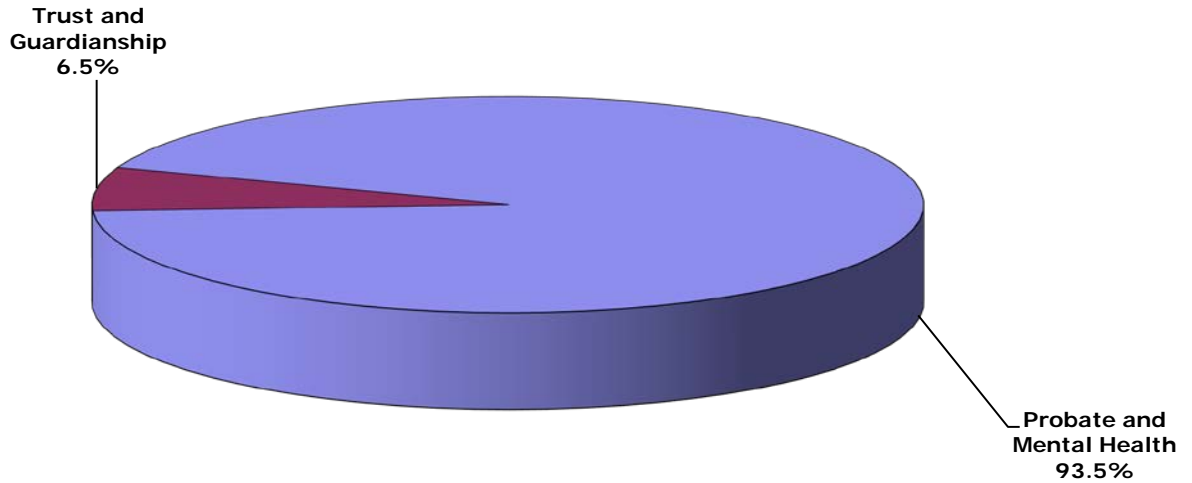
Circuit/County	Probate and Mental Health	Trust and Guardianship	Total
Circuit 17	8,834	481	9,315
Broward	8,834	481	9,315
Circuit 18	4,535	483	5,018
Brevard	2,617	281	2,898
Seminole	1,918	202	2,120
Circuit 19	3,850	291	4,141
Indian River	848	70	918
Martin	766	57	823
Okeechobee	141	10	151
St. Lucie	2,095	154	2,249
Circuit 20	6,353	537	6,890
Charlotte	1,720	118	1,838
Collier	1,661	143	1,804
Glades	26	5	31
Hendry	102	14	116
Lee	2,844	257	3,101
Total	99,769	7,404	107,173

Circuit Probate ♦ Dispositions

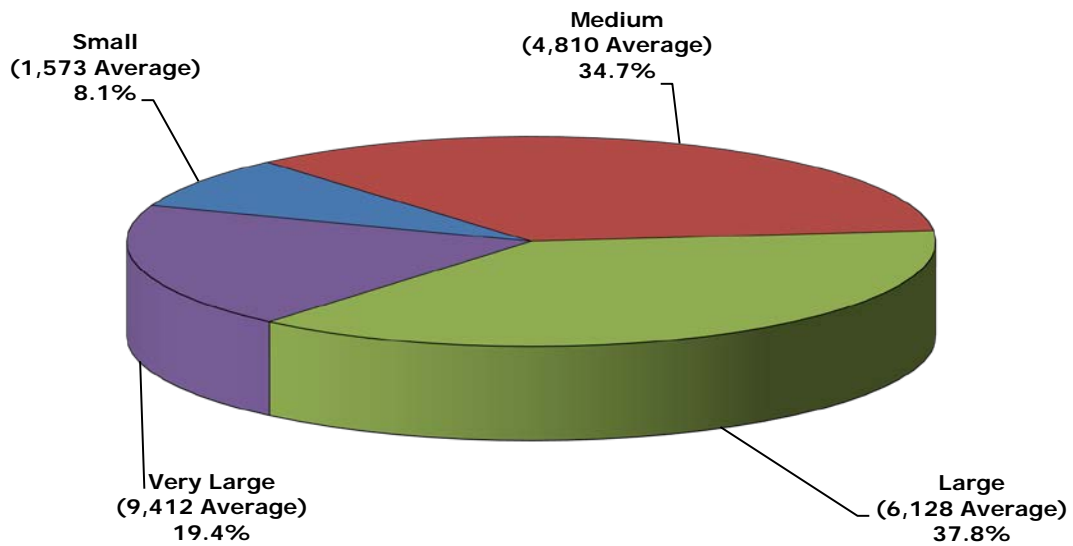
CIRCUIT PROBATE DISPOSITIONS
Statewide by Category/Case Type and Month
FY 2012-13

Category/ Case Type	Jul	Aug	Sep	Oct	Nov	Dec	Jan	Feb	Mar	Apr	May	Jun	Total
A. Probate and Mental Health	7,558	8,090	6,660	8,428	6,867	6,867	8,347	6,897	7,667	8,071	8,061	7,267	90,780
1. Probate	3,985	4,099	3,280	4,172	3,507	3,391	4,255	3,130	3,732	3,873	3,826	3,482	44,732
2. Baker Act	2,574	2,795	2,409	3,104	2,427	2,535	3,015	2,756	2,796	3,054	3,022	2,689	33,176
3. Substance Abuse	719	785	660	750	629	596	753	696	787	800	855	759	8,789
4. Other Social Cases	280	411	311	402	304	345	324	315	352	344	358	337	4,083
B. Trust and Guardianship	492	586	483	612	495	560	602	468	509	571	487	482	6,347
1. Guardianship	449	534	435	559	444	499	535	420	442	490	433	431	5,671
2. Trust	43	52	48	53	51	61	67	48	67	81	54	51	676
Total	8,050	8,676	7,143	9,040	7,362	7,427	8,949	7,365	8,176	8,642	8,548	7,749	97,127

CIRCUIT PROBATE DISPOSITIONS
by Category
FY 2012-13



CIRCUIT PROBATE DISPOSITIONS
by Circuit Size*
FY 2012-13



*Small Circuits - 2nd, 3rd, 8th, 14th, 16th;
Medium Circuits - 1st, 5th, 7th, 10th, 12th, 18th, 19th;
Large Circuits - 4th, 6th, 9th, 13th, 15th, 20th; and
Very Large Circuits - 11th, 17th (as defined in the Glossary).

Circuit Probate ♦ Dispositions

CIRCUIT PROBATE DISPOSITIONS
by Circuit and Case Type
FY 2012-13

Circuit	Probate	Baker Act	Substance Abuse	Other Social Cases	Guardianship	Trust	Total
1	1,747	1,915	439	92	204	18	4,415
2	826	1,544	58	238	169	17	2,852
3	453	210	229	17	35	0	944
4	1,983	2,028	385	183	340	25	4,944
5	3,420	2,086	214	356	357	16	6,449
6	4,516	2,853	127	397	413	86	8,392
7	2,624	1,406	542	83	273	26	4,954
8	725	1,030	133	123	97	13	2,121
9	1,737	1,714	616	229	335	47	4,678
10	1,948	1,874	430	118	228	24	4,622
11	3,316	4,897	861	897	798	24	10,793
12	2,691	1,073	1,334	142	283	61	5,584
13	2,218	2,761	846	240	405	62	6,532
14	832	403	200	61	72	6	1,574
15	3,371	1,183	657	188	363	71	5,833
16	288	24	44	7	12	0	375
17	4,491	2,259	698	244	286	52	8,030
18	1,830	1,131	611	159	374	12	4,117
19	1,787	1,197	183	84	195	81	3,527
20	3,929	1,588	182	225	432	35	6,391
Total	44,732	33,176	8,789	4,083	5,671	676	97,127

CIRCUIT PROBATE DISPOSITIONS
by Circuit/County and Category
FY 2012-13

Circuit/County	Probate and Mental Health	Trust and Guardianship	Total
Circuit 1	4,193	222	4,415
Escambia	2,630	114	2,744
Okaloosa	843	57	900
Santa Rosa	548	37	585
Walton	172	14	186
Circuit 2	2,666	186	2,852
Franklin	67	3	70
Gadsden	384	75	459
Jefferson	15	6	21
Leon	2,123	84	2,207
Liberty	25	1	26
Wakulla	52	17	69
Circuit 3	909	35	944
Columbia	412	20	432
Dixie	24	0	24
Hamilton	25	2	27
Lafayette	20	0	20
Madison	96	5	101
Suwannee	160	5	165
Taylor	172	3	175
Circuit 4	4,579	365	4,944
Clay	406	44	450
Duval	3,957	312	4,269
Nassau	216	9	225

Circuit Probate ♦ Dispositions

CIRCUIT PROBATE DISPOSITIONS
by Circuit/County and Category
FY 2012-13

Circuit/County	Probate and Mental Health	Trust and Guardianship	Total
Circuit 5	6,076	373	6,449
Citrus	707	61	768
Hernando	1,642	92	1,734
Lake	1,515	67	1,582
Marion	1,928	131	2,059
Sumter	284	22	306
Circuit 6	7,893	499	8,392
Pasco	2,436	105	2,541
Pinellas	5,457	394	5,851
Circuit 7	4,655	299	4,954
Flagler	384	71	455
Putnam	241	14	255
St. Johns	670	80	750
Volusia	3,360	134	3,494
Circuit 8	2,011	110	2,121
Alachua	1,478	87	1,565
Baker	214	7	221
Bradford	91	7	98
Gilchrist	5	0	5
Levy	139	9	148
Union	84	0	84
Circuit 9	4,296	382	4,678
Orange	3,338	275	3,613
Osceola	958	107	1,065

CIRCUIT PROBATE DISPOSITIONS
by Circuit/County and Category
FY 2012-13

Circuit/County	Probate and Mental Health	Trust and Guardianship	Total
Circuit 10	4,370	252	4,622
Hardee	60	20	80
Highlands	863	2	865
Polk	3,447	230	3,677
Circuit 11	9,971	822	10,793
Miami-Dade	9,971	822	10,793
Circuit 12	5,240	344	5,584
Desoto	61	2	63
Manatee	1,338	142	1,480
Sarasota	3,841	200	4,041
Circuit 13	6,065	467	6,532
Hillsborough	6,065	467	6,532
Circuit 14	1,496	78	1,574
Bay	947	11	958
Calhoun	50	1	51
Gulf	71	8	79
Holmes	85	6	91
Jackson	276	20	296
Washington	67	32	99
Circuit 15	5,399	434	5,833
Palm Beach	5,399	434	5,833
Circuit 16	363	12	375
Monroe	363	12	375

Circuit Probate ♦ Dispositions

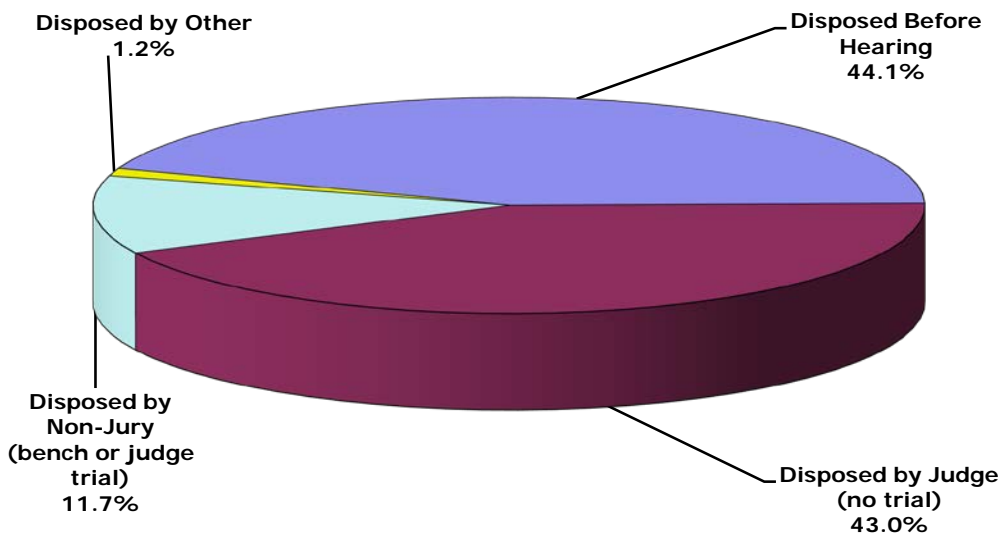
CIRCUIT PROBATE DISPOSITIONS
by Circuit/County and Category
FY 2012-13

Circuit/County	Probate and Mental Health	Trust and Guardianship	Total
Circuit 17	7,692	338	8,030
Broward	7,692	338	8,030
Circuit 18	3,731	386	4,117
Brevard	1,970	216	2,186
Seminole	1,761	170	1,931
Circuit 19	3,251	276	3,527
Indian River	810	63	873
Martin	661	46	707
Okeechobee	111	14	125
St. Lucie	1,669	153	1,822
Circuit 20	5,924	467	6,391
Charlotte	1,572	104	1,676
Collier	1,490	125	1,615
Glades	50	3	53
Hendry	78	12	90
Lee	2,734	223	2,957
Total	90,780	6,347	97,127

CIRCUIT PROBATE DISPOSITIONS
 Statewide by Disposition Type and Case Type
 FY 2012-13

Disposition Type	Probate	Baker Act	Substance Abuse	Other Social Cases	Guardianship	Trust	Total
A. Disposed Before Hearing	21,981	16,460	2,824	811	621	235	42,932
B. Disposed by Judge (no trial)	22,324	9,234	4,819	1,772	3,223	366	41,738
C. Disposed by Non-Jury	233	6,795	1,110	1,458	1,735	3	11,334
D. Disposed by Other	194	687	36	42	92	72	1,123
Total	44,732	33,176	8,789	4,083	5,671	676	97,127

CIRCUIT PROBATE DISPOSITIONS
 by Disposition Type
 FY 2012-13



Circuit Probate ♦ Other Statistics

The Circuit Probate division also includes other statistics in the form of clearance rates and reopenings. **These data are provided by the 67 clerks of court. However, dispositions and special proceedings data are not audited for accuracy by the OSCA.**

Clearance Rates - The clearance rate is a useful measure of the responsiveness of a court to the demand for services, and is nationally recognized as a measure of court performance. The rate is determined by dividing the total number of cases *disposed* by the total number of cases *filed* during a specific time period. If a court received 1,000 new cases a month and *disposed* of 900 cases within the same month, the clearance rate for that month would be 90%. A 100% clearance rate means that a court is disposing of at least as many cases as have been filed during the reporting period. Thus, where clearance rates exceed 100%, those circuits are actually disposing of cases more quickly than cases are being filed for the period in question.

Reopenings - A reopening occurs when a case that has previously been reported as disposed is resubmitted to the court through a motion or petition.

**CIRCUIT PROBATE CLEARANCE RATES
by Circuit
FY 2012-13**

Circuit	Filings	Dispositions	Clearance Rates
1	4,763	4,415	92.7%
2	3,136	2,852	90.9%
3	1,093	944	86.4%
4	5,579	4,944	88.6%
5	7,012	6,449	92.0%
6	8,778	8,392	95.6%
7	5,471	4,954	90.6%
8	2,189	2,121	96.9%
9	5,340	4,678	87.6%
10	4,815	4,622	96.0%
11	11,391	10,793	94.8%
12	6,002	5,584	93.0%
13	6,611	6,532	98.8%
14	1,696	1,574	92.8%
15	7,485	5,833	77.9%
16	448	375	83.7%
17	9,315	8,030	86.2%
18	5,018	4,117	82.0%
19	4,141	3,527	85.2%
20	6,890	6,391	92.8%
Total	107,173	97,127	90.6%

Circuit Probate ♦ Other Statistics

CIRCUIT PROBATE SPECIAL PROCEEDINGS
by Circuit
FY 2012-13

Circuit	Reopenings
1	3,434
2	1,570
3	18
4	1,260
5	3,039
6	6,384
7	2,181
8	519
9	4,377
10	2,888
11	23,030
12	3,705
13	5,280
14	713
15	5,920
16	55
17	375
18	3,885
19	1,478
20	3,748
Total	73,859

-This page intentionally left blank-