

Circuit Criminal ❖ Overview

The Circuit Criminal division includes felony offenses which are divided into the following categories: capital murder, violent crimes, crimes against persons, crimes against property, and drug crimes. Within these categories are the following case types:

Capital Murder - capital murder offenses

Violent Crimes - non-capital murder and sexual offenses

Crimes Against Persons - robbery and other crimes against persons

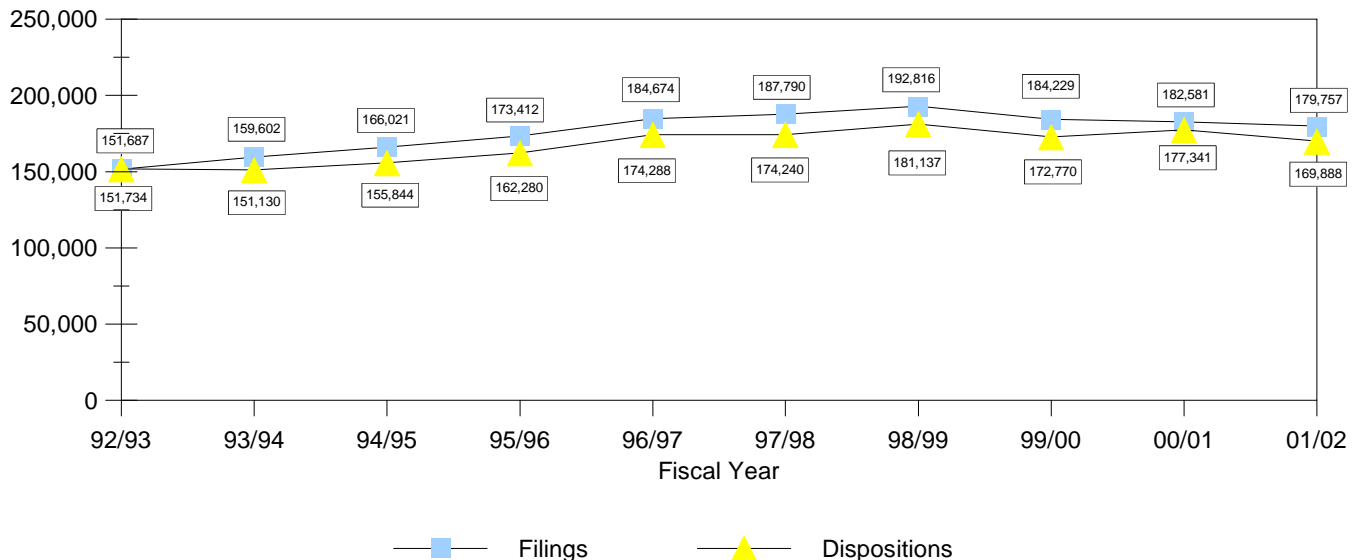
Crimes Against Property - burglary, theft, forgery, fraud, worthless checks, other crimes against property, and other felony offenses¹

Drug Crimes - drug offenses

In the Circuit Criminal division, *filings* are defined as each defendant against whom an information or indictment is filed. *Dispositions* are defined as each defendant disposed when a final judicial decision is rendered terminating a criminal proceeding by an acquittal, a dismissal, or a judgment stating the specific sentence (in the case of a conviction). *Charges* are defined as each individual offense with which a defendant is charged. These charges or counts are tied directly to each filing. *Jury trials* are defined as trials in which a group of citizens are empaneled, selected and sworn to determine the issues of fact in a case.

Circuit Criminal Filings & Dispositions

FY 1992-93 to FY 2001-02



¹Other felony offenses fall under the “crimes against property” case type because they are handled similarly to property offenses. Examples of other felony offenses are: weapon charges, resisting arrest, contempt of court, failure to appear, accessory after the fact, book-making, etc.

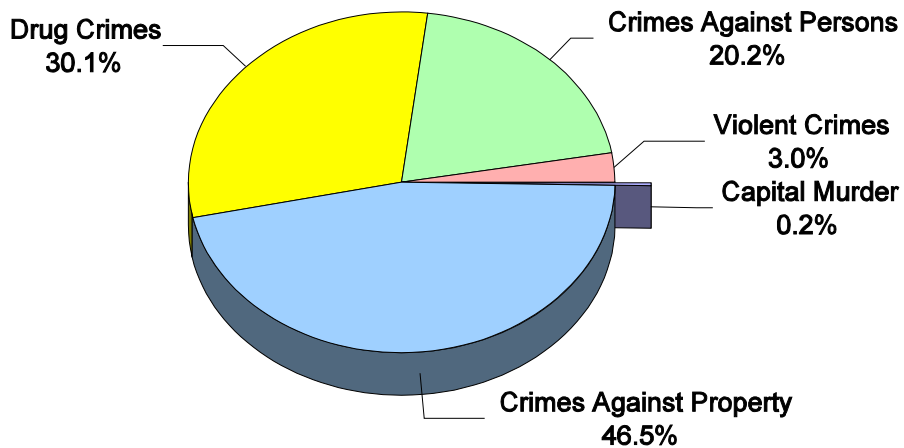
Circuit Criminal ❖ Filings

STATEWIDE CIRCUIT CRIMINAL FILINGS													
by Category, Case Type, and Month													
FY 2001-02													
	Jul	Aug	Sep	Oct	Nov	Dec	Jan	Feb	Mar	Apr	May	Jun	Total
Capital Murder													409
Capital Murder	37	27	34	45	31	28	33	36	24	46	33	35	409
Violent Crimes													5,408
Non-Capital Murder ²	124	121	89	111	108	93	114	85	81	84	97	127	1,234
Sexual Offenses	351	400	296	360	323	268	365	350	360	344	392	365	4,174
Crimes Against Persons													36,324
Robbery	516	561	423	566	516	476	526	476	490	495	496	463	6,004
Other Crimes Against Persons	2,669	2,689	2,214	2,839	2,476	2,275	2,567	2,436	2,344	2,523	2,767	2,521	30,320
Crimes Against Property													83,499
Burglary	1,460	1,701	1,332	1,731	1,402	1,434	1,532	1,425	1,547	1,513	1,583	1,390	18,050
Theft, Forgery, Fraud	3,288	3,706	2,900	3,849	3,192	2,980	3,534	3,258	3,372	3,336	3,511	3,242	40,168
Worthless Checks	442	574	524	428	434	294	442	340	353	544	314	464	5,153
Other Crimes Against Property	145	176	140	138	123	126	150	128	132	122	150	121	1,651
Other	1,527	1,690	1,332	1,728	1,482	1,314	1,635	1,529	1,562	1,517	1,689	1,472	18,477
Drug Crimes													54,117
Drug	4,350	4,929	3,691	4,595	4,215	3,971	4,538	4,539	4,623	4,674	5,350	4,642	54,117
Total	14,909	16,574	12,975	16,390	14,302	13,259	15,436	14,602	14,888	15,198	16,382	14,842	179,757

²Non-Capital Murder includes negligent manslaughter, vehicular manslaughter, unpremeditated murder, commission of a felony which causes death, aggravated manslaughter, etc.

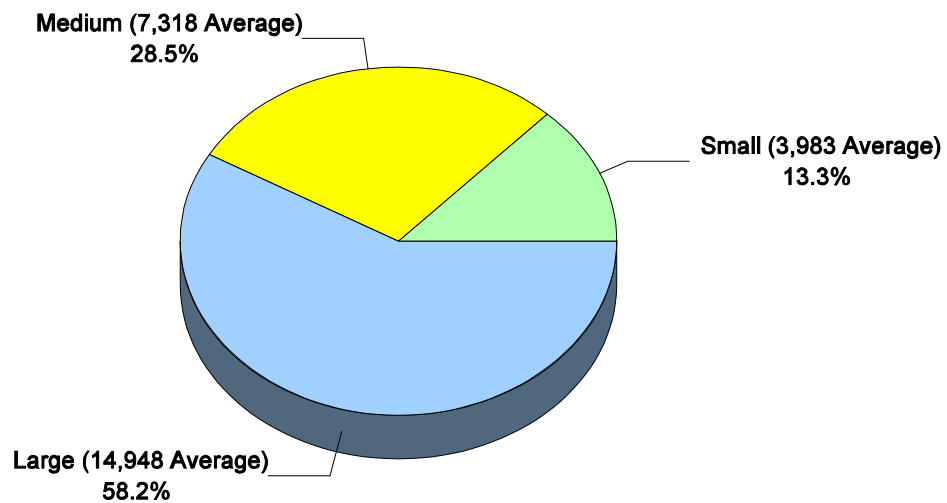
Circuit Criminal Filings by Category

FY 2001-02



Circuit Criminal Filings by Circuit Size*

FY 2001-02



*Small Circuits- 2nd, 3rd, 8th, 14th, 16th, 19th;
Medium Circuits- 1st, 5th, 7th, 10th, 12th, 18th, 20th;
Large Circuits- 4th, 6th, 9th, 11th, 13th, 15th, 17th (as defined in the Glossary).

Circuit Criminal ❖ Filings

CIRCUIT CRIMINAL FILINGS by Case Type and Circuit FY 2001-02												
Circuit	Capital Murder	Non-Capital Murder	Sexual Offenses	Robbery	Other Crimes Against Persons	Burglary	Theft Forgery Fraud	Worthless Checks	Other Crimes Against Property	Drugs	Other	Total
1	14	31	206	240	1,664	1,407	1,969	265	85	2,192	1,038	9,111
2	5	29	114	188	1,106	489	1,644	81	41	1,248	600	5,545
3	4	14	75	42	276	242	418	18	23	357	280	1,749
4	18	67	386	227	999	554	1,980	1,867	113	1,973	739	8,923
5	9	61	290	200	1,611	945	2,070	255	76	2,039	1,279	8,835
6	29	54	328	311	2,888	1,251	3,432	670	113	4,147	1,581	14,804
7	25	30	168	209	1,197	748	1,594	137	75	2,321	919	7,423
8	12	47	167	226	1,132	654	1,509	63	46	1,945	640	6,441
9	17	123	356	580	2,960	1,385	3,316	199	131	4,522	1,341	14,930
10	18	64	233	158	988	996	1,834	315	64	2,350	1,031	8,051
11	115	307	457	1,218	4,911	2,489	5,373	81	176	8,492	1,507	25,126
12	4	20	101	103	499	403	1,052	48	41	1,356	642	4,269
13	28	90	172	575	1,801	1,434	3,787	605	131	4,217	1,388	14,228
14	1	20	112	48	492	381	947	48	28	1,063	517	3,657
15	12	61	212	477	1,527	1,390	2,216	113	80	3,344	1,449	10,881
16	0	9	15	24	279	107	317	57	28	530	209	1,575
17	51	99	239	678	2,810	1,485	2,964	10	214	6,615	580	15,745
18	15	38	199	156	1,248	555	1,529	195	56	1,974	720	6,685
19	20	16	141	101	788	418	711	118	59	1,514	1,044	4,930
20	12	54	203	243	1,144	717	1,506	8	71	1,918	973	6,849
Total	409	1,234	4,174	6,004	30,320	18,050	40,168	5,153	1,651	54,117	18,477	179,757

Circuit Criminal ❖ Filings

CIRCUIT CRIMINAL FILINGS by Category and Circuit/County FY 2001-02						
Circuit/County	Capital Murder	Violent Crimes	Crimes Against Persons	Crimes Against Property	Drugs	Total
Circuit 1	14	237	1,904	4,764	2,192	9,111
Escambia	12	128	1,273	2,973	1,367	5,753
Okaloosa	0	34	252	686	359	1,331
Santa Rosa	0	59	241	536	153	989
Walton	2	16	138	569	313	1,038
Circuit 2	5	143	1,294	2,855	1,248	5,545
Franklin	0	9	47	91	120	267
Gadsden	0	34	176	289	164	663
Jefferson	0	7	46	71	155	279
Leon	5	73	940	2,178	711	3,907
Liberty	0	4	16	29	31	80
Wakulla	0	16	69	197	67	349
Circuit 3	4	89	318	981	357	1,749
Columbia	3	41	171	461	173	849
Dixie	0	5	1	35	10	51
Hamilton	0	6	38	103	16	163
Lafayette	0	3	8	16	5	32
Madison	0	7	29	49	17	102
Suwannee	1	22	46	210	88	367
Taylor	0	5	25	107	48	185
Circuit 4	18	453	1,226	5,253	1,973	8,923
Clay	0	113	117	598	170	998
Duval	10	302	979	4,344	1,627	7,262
Nassau	8	38	130	311	176	663

Circuit Criminal ❖ Filings

CIRCUIT CRIMINAL FILINGS, Continued by Category and Circuit/County FY 2001-02						
Circuit/County	Capital Murder	Violent Crimes	Crimes Against Persons	Crimes Against Property	Drugs	Total
Circuit 5	9	351	1,811	4,625	2,039	8,835
Citrus	2	64	175	506	156	903
Hernando	2	44	271	594	236	1,147
Lake	4	81	520	1,101	571	2,277
Marion	1	141	745	2,199	986	4,072
Sumter	0	21	100	225	90	436
Circuit 6	29	382	3,199	7,047	4,147	14,804
Pasco	5	98	643	1,785	780	3,311
Pinellas	24	284	2,556	5,262	3,367	11,493
Circuit 7	25	198	1,406	3,473	2,321	7,423
Flagler	0	19	97	203	130	449
Putnam	4	40	90	405	192	731
St. Johns	4	31	248	717	354	1,354
Volusia	17	108	971	2,148	1,645	4,889
Circuit 8	12	214	1,358	2,912	1,945	6,441
Alachua	12	142	1,115	2,291	1,626	5,186
Baker	0	13	19	101	59	192
Bradford	0	22	70	209	126	427
Gilchrist	0	4	27	36	15	82
Levy	0	21	74	161	89	345
Union	0	12	53	114	30	209
Circuit 9	17	479	3,540	6,372	4,522	14,930
Orange	11	359	2,824	5,390	3,593	12,177
Osceola	6	120	716	982	929	2,753

Circuit Criminal ❖ Filings

CIRCUIT CRIMINAL FILINGS, Continued by Category and Circuit/County FY 2001-02

Circuit/County	Capital Murder	Violent Crimes	Crimes Against Persons	Crimes Against Property	Drugs	Total
Circuit 10	18	297	1,146	4,240	2,350	8,051
Hardee	0	5	49	179	68	301
Highlands	2	58	106	434	259	859
Polk	16	234	991	3,627	2,023	6,891
Circuit 11	115	764	6,129	9,626	8,492	25,126
Dade	115	764	6,129	9,626	8,492	25,126
Circuit 12	4	121	602	2,186	1,356	4,269
Desoto	0	10	25	168	130	333
Manatee	2	26	143	494	246	911
Sarasota	2	85	434	1,524	980	3,025
Circuit 13	28	262	2,376	7,345	4,217	14,228
Hillsborough	28	262	2,376	7,345	4,217	14,228
Circuit 14	1	132	540	1,921	1,063	3,657
Bay	1	60	238	1,054	608	1,961
Calhoun	0	14	41	215	89	359
Gulf	0	8	60	92	75	235
Holmes	0	27	56	236	128	447
Jackson	0	12	103	217	84	416
Washington	0	11	42	107	79	239
Circuit 15	12	273	2,004	5,248	3,344	10,881
Palm Beach	12	273	2,004	5,248	3,344	10,881
Circuit 16	0	24	303	718	530	1,575
Monroe	0	24	303	718	530	1,575

Circuit Criminal ❖ Filings

CIRCUIT CRIMINAL FILINGS, Continued						
by Category and Circuit/County						
FY 2001-02						
Circuit/County	Capital Murder	Violent Crimes	Crimes Against Persons	Crimes Against Property	Drugs	Total
Circuit 17	51	338	3,488	5,253	6,615	15,745
Broward	51	338	3,488	5,253	6,615	15,745
Circuit 18	15	237	1,404	3,055	1,974	6,685
Brevard	12	144	623	1,699	1,020	3,498
Seminole	3	93	781	1,356	954	3,187
Circuit 19	20	157	889	2,350	1,514	4,930
Indian River	0	42	151	891	326	1,410
Martin	1	26	219	467	432	1,145
Okeechobee	1	31	106	221	109	468
St. Lucie	18	58	413	771	647	1,907
Circuit 20	12	257	1,387	3,275	1,918	6,849
Charlotte	3	48	198	513	254	1,016
Collier	2	88	495	957	575	2,117
Glades	0	7	22	41	29	99
Hendry	0	17	86	200	98	401
Lee	7	97	586	1,564	962	3,216
State Total	409	5,408	36,324	83,499	54,117	179,757

Circuit Criminal ❖ Filings

CIRCUIT CRIMINAL CHARGES by Circuit/County FY 2001-02			
Circuit/County	Total Filings (Defendants)	Total Charges	Number of Charges per Defendant
Circuit 1	9,111	18,634	2.0
Escambia	5,753	12,985	2.3
Okaloosa	1,331	1,740	1.3
Santa Rosa	989	1,875	1.9
Walton	1,038	2,034	2.0
Circuit 2	5,545	9,812	1.8
Franklin	267	360	1.3
Gadsden	663	961	1.4
Jefferson	279	465	1.7
Leon	3,907	7,344	1.9
Liberty	80	113	1.4
Wakulla	349	569	1.6
Circuit 3	1,749	4,583	2.6
Columbia	849	2,484	2.9
Dixie	51	119	2.3
Hamilton	163	419	2.6
Lafayette	32	66	2.1
Madison	102	237	2.3
Suwannee	367	911	2.5
Taylor	185	347	1.9
Circuit 4	8,923	16,514	1.9
Clay	998	1,884	1.9
Duval	7,262	13,403	1.8
Nassau	663	1,227	1.9

Circuit Criminal ❖ Filings

CIRCUIT CRIMINAL CHARGES, Continued			
by Circuit/County			
FY 2001-02			
Circuit/County	Total Filings (Defendants)	Total Charges	Number of Charges per Defendant
Circuit 5	8,835	18,766	2.1
Citrus	903	1,972	2.2
Hernando	1,147	2,264	2.0
Lake	2,277	5,092	2.2
Marion	4,072	8,435	2.1
Sumter	436	1,003	2.3
Circuit 6	14,804	22,790	1.5
Pasco	3,311	5,474	1.7
Pinellas	11,493	17,316	1.5
Circuit 7	7,423	11,907	1.6
Flagler	449	792	1.8
Putnam	731	1,029	1.4
St. Johns	1,354	2,269	1.7
Volusia	4,889	7,817	1.6
Circuit 8	6,441	9,266	1.4
Alachua	5,186	6,588	1.3
Baker	192	432	2.3
Bradford	427	952	2.2
Gilchrist	82	148	1.8
Levy	345	748	2.2
Union	209	398	1.9
Circuit 9	14,930	29,521	2.0
Orange	12,177	23,981	2.0
Osceola	2,753	5,540	2.0

Circuit Criminal ❖ Filings

CIRCUIT CRIMINAL CHARGES, Continued			
by Circuit/County			
FY 2001-02			
Circuit/County	Total Filings (Defendants)	Total Charges	Number of Charges per Defendant
Circuit 10	8,051	20,277	2.5
Hardee	301	581	1.9
Highlands	859	2,351	2.7
Polk	6,891	17,345	2.5
Circuit 11	25,126	64,906	2.6
Dade	25,126	64,906	2.6
Circuit 12	4,269	7,383	1.7
Desoto	333	353	1.1
Manatee	911	1,569	1.7
Sarasota	3,025	5,461	1.8
Circuit 13	14,228	30,920	2.2
Hillsborough	14,228	30,920	2.2
Circuit 14	3,657	6,187	1.7
Bay	1,961	3,441	1.8
Calhoun	359	627	1.7
Gulf	235	398	1.7
Holmes	447	756	1.7
Jackson	416	617	1.5
Washington	239	348	1.5
Circuit 15	10,881	19,399	1.8
Palm Beach	10,881	19,399	1.8
Circuit 16	1,575	3,301	2.1
Monroe	1,575	3,301	2.1

Circuit Criminal ❖ Filings

CIRCUIT CRIMINAL CHARGES, Continued by Circuit/County FY 2001-02			
Circuit/County	Total Filings (Defendants)	Total Charges	Number of Charges per Defendant
Circuit 17	15,745	32,086	2.0
Broward	15,745	32,086	2.0
Circuit 18	6,685	13,973	2.1
Brevard	3,498	7,587	2.2
Seminole	3,187	6,386	2.0
Circuit 19	4,930	10,952	2.2
Indian River	1,410	2,203	1.6
Martin	1,145	2,453	2.1
Okeechobee	468	927	2.0
St. Lucie	1,907	5,369	2.8
Circuit 20	6,849	13,891	2.0
Charlotte	1,016	2,143	2.1
Collier	2,117	4,757	2.2
Glades	99	183	1.8
Hendry	401	744	1.9
Lee	3,216	6,064	1.9
State Total	179,757	365,068	2.0

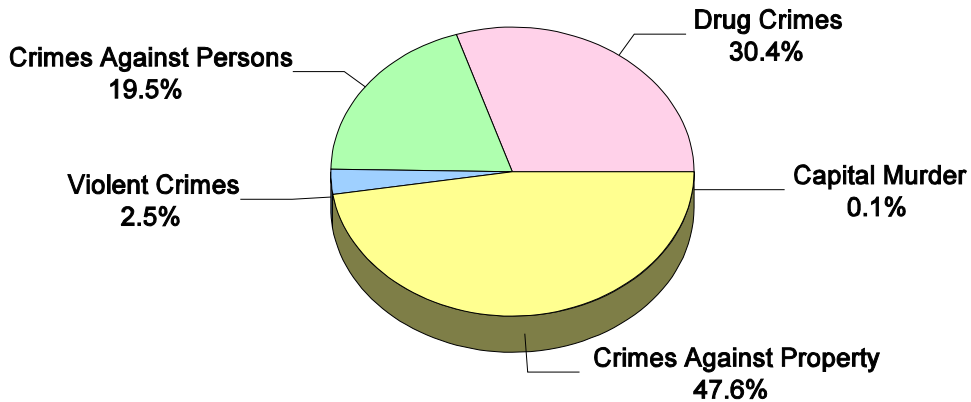
Circuit Criminal ❖ Dispositions

STATEWIDE CIRCUIT CRIMINAL DISPOSITIONS													
by Category, Case Type, and Month													
FY 2001-02													
	Jul	Aug	Sep	Oct	Nov	Dec	Jan	Feb	Mar	Apr	May	Jun	Total
Capital Murder													209
Capital Murder	11	23	18	22	19	12	14	17	14	17	20	22	209
Violent Crimes													4,165
Non-Capital Murder	77	99	49	96	89	66	112	79	92	73	71	74	977
Sexual Offenses	255	317	222	320	300	183	275	279	236	286	259	256	3,188
Crimes Against Persons													33,094
Robbery	411	416	344	510	412	308	480	439	451	414	455	395	5,035
Other Crimes Against Persons	2,245	2,627	2,051	2,711	2,345	1,881	2,466	2,552	2,273	2,415	2,426	2,067	28,059
Crimes Against Property													80,857
Burglary	1,289	1,347	1,085	1,489	1,239	1,034	1,352	1,349	1,264	1,338	1,374	1,073	15,233
Theft, Forgery, Fraud	3,036	3,390	2,618	3,686	3,124	2,644	3,378	3,157	3,159	3,456	3,480	3,155	38,283
Worthless Checks	460	445	614	508	457	502	580	649	399	539	427	449	6,029
Other Crimes Against Property	137	193	139	150	131	101	144	133	138	139	132	130	1,667
Other	1,503	1,843	1,435	1,771	1,663	1,212	1,686	1,702	1,651	1,789	1,710	1,680	19,645
Drug Crimes													51,563
Drug	4,430	4,796	3,691	4,702	4,192	3,285	4,419	4,237	4,193	4,658	4,645	4,315	51,563
Total	13,854	15,496	12,266	15,965	13,971	11,228	14,906	14,593	13,870	15,124	14,999	13,616	169,888

Circuit Criminal ❖ Dispositions

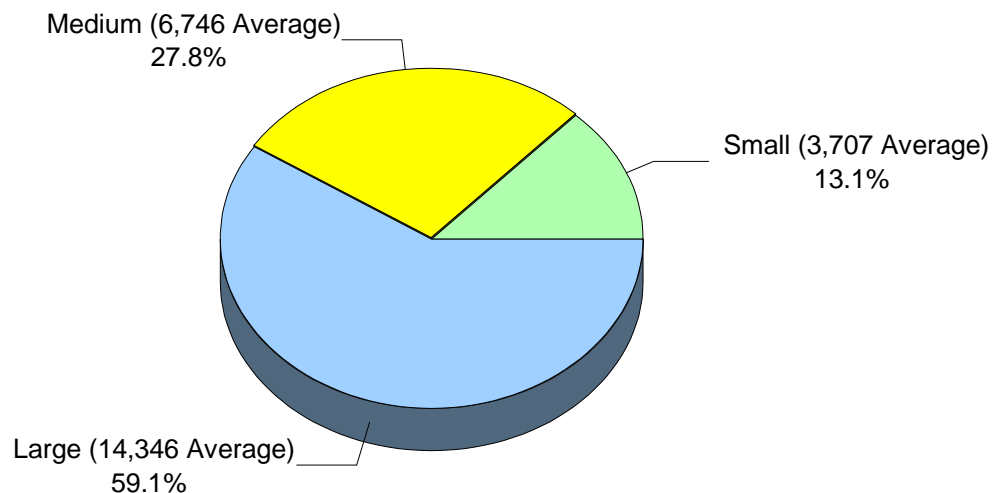
Circuit Criminal Dispositions by Category

FY 2001-02



Circuit Criminal Dispositions by Circuit Size*

FY 2001-02



*Small Circuits- 2nd, 3rd, 8th, 14th, 16th, 19th;
Medium Circuits- 1st, 5th, 7th, 10th, 12th, 18th, 20th;
Large Circuits- 4th, 6th, 9th, 11th, 13th, 15th, 17th (as defined in the Glossary).

Circuit Criminal ❖ Dispositions

CIRCUIT CRIMINAL DISPOSITIONS												
by Case Type and Circuit												
FY 2001-02												
Circuit	Capital Murder	Non-Capital Murder	Sexual Offenses	Robbery	Other Crimes Against Persons	Burglary	Theft Forgery Fraud	Worthless Checks	Other Crimes Against Property	Drugs	Other	Total
1	11	25	171	184	1,403	773	1,902	420	97	1,943	1,273	8,202
2	3	27	106	165	917	515	1,711	131	43	1,323	686	5,627
3	4	10	51	40	253	191	347	39	20	332	302	1,589
4	19	46	324	238	968	483	1,939	1,775	101	2,023	592	8,508
5	5	41	229	161	1,601	835	2,095	344	92	2,053	1,522	8,978
6	19	57	337	230	2,755	986	2,937	872	124	3,451	1,046	12,814
7	10	32	141	172	1,164	775	1,556	183	89	2,242	1,031	7,395
8	1	19	87	165	661	444	984	174	37	1,212	657	4,441
9	15	63	226	535	2,266	1,217	3,189	155	134	4,669	1,799	14,268
10	1	29	89	102	668	583	1,510	372	45	1,723	1,067	6,189
11	47	285	408	1,083	4,633	2,261	5,034	182	150	8,387	1,416	23,886
12	3	20	73	67	383	292	810	92	33	1,523	550	3,846
13	12	72	114	447	1,842	1,273	3,742	584	144	3,686	1,574	13,490
14	1	10	88	65	429	370	909	55	26	909	471	3,333
15	10	61	148	471	1,647	1,209	2,408	119	140	3,429	1,639	11,281
16	0	5	16	17	280	132	366	110	35	629	329	1,919
17	27	88	170	552	2,649	1,443	3,139	21	202	6,675	1,207	16,173
18	1	24	193	64	1,514	462	1,481	289	33	1,936	481	6,478
19	17	15	77	99	1,039	338	938	106	57	1,743	903	5,332
20	3	48	140	178	987	651	1,286	6	65	1,675	1,100	6,139
Total	209	977	3,188	5,035	28,059	15,233	38,283	6,029	1,667	51,563	19,645	169,888

Circuit Criminal ❖ Dispositions

CIRCUIT CRIMINAL DISPOSITIONS by Category and Circuit/County FY 2001-02						
Circuit/County	Capital Murder	Violent Crimes	Crimes Against Persons	Crimes Against Property	Drugs	Total
Circuit 1	11	196	1,587	4,465	1,943	8,202
Escambia	4	102	1,060	2,770	1,128	5,064
Okaloosa	2	32	174	692	378	1,278
Santa Rosa	0	38	170	513	192	913
Walton	5	24	183	490	245	947
Circuit 2	3	133	1,082	3,086	1,323	5,627
Franklin	0	5	56	89	103	253
Gadsden	0	19	167	268	185	639
Jefferson	0	10	42	95	210	357
Leon	3	81	738	2,408	760	3,990
Liberty	0	3	14	34	24	75
Wakulla	0	15	65	192	41	313
Circuit 3	4	61	293	899	332	1,589
Columbia	3	31	172	498	169	873
Dixie	0	2	2	22	10	36
Hamilton	0	3	14	41	9	67
Lafayette	0	2	5	14	5	26
Madison	0	7	51	71	23	152
Suwannee	1	13	36	158	78	286
Taylor	0	3	13	95	38	149
Circuit 4	19	370	1,206	4,890	2,023	8,508
Clay	1	72	157	602	147	979
Duval	15	273	929	3,999	1,710	6,926
Nassau	3	25	120	289	166	603

Circuit Criminal ❖ Dispositions

CIRCUIT CRIMINAL DISPOSITIONS, Continued by Category and Circuit/County FY 2001-02

Circuit/County	Capital Murder	Violent Crimes	Crimes Against Persons	Crimes Against Property	Drugs	Total
Circuit 5	5	270	1,762	4,888	2,053	8,978
Citrus	0	62	167	538	154	921
Hernando	1	42	273	627	295	1,238
Lake	3	52	521	1,134	461	2,171
Marion	1	99	703	2,360	1,037	4,200
Sumter	0	15	98	229	106	448
Circuit 6	19	394	2,985	5,965	3,451	12,814
Pasco	5	119	595	1,526	553	2,798
Pinellas	14	275	2,390	4,439	2,898	10,016
Circuit 7	10	173	1,336	3,634	2,242	7,395
Flagler	1	10	70	185	96	362
Putnam	2	35	103	424	214	778
St. Johns	2	27	239	728	311	1,307
Volusia	5	101	924	2,297	1,621	4,948
Circuit 8	1	106	826	2,296	1,212	4,441
Alachua	1	57	604	1,676	929	3,267
Baker	0	10	24	91	50	175
Bradford	0	14	67	170	77	328
Gilchrist	0	1	14	41	7	63
Levy	0	16	74	250	130	470
Union	0	8	43	68	19	138
Circuit 9	15	289	2,801	6,494	4,669	14,268
Orange	8	188	2,176	5,411	3,762	11,545
Osceola	7	101	625	1,083	907	2,723

Circuit Criminal ❖ Dispositions

CIRCUIT CRIMINAL DISPOSITIONS, Continued						
by Category and Circuit/County						
FY 2001-02						
Circuit/County	Capital Murder	Violent Crimes	Crimes Against Persons	Crimes Against Property	Drugs	Total
Circuit 10	1	118	770	3,577	1,723	6,189
Hardee	0	2	21	92	67	182
Highlands	0	19	52	247	168	486
Polk	1	97	697	3,238	1,488	5,521
Circuit 11	47	693	5,716	9,043	8,387	23,886
Dade	47	693	5,716	9,043	8,387	23,886
Circuit 12	3	93	450	1,777	1,523	3,846
Desoto	0	5	35	140	273	453
Manatee	1	23	120	427	220	791
Sarasota	2	65	295	1,210	1,030	2,602
Circuit 13	12	186	2,289	7,317	3,686	13,490
Hillsborough	12	186	2,289	7,317	3,686	13,490
Circuit 14	1	98	494	1,831	909	3,333
Bay	0	42	263	1,116	623	2,044
Calhoun	0	9	32	161	45	247
Gulf	0	2	39	78	65	184
Holmes	1	26	49	214	86	376
Jackson	0	15	94	204	66	379
Washington	0	4	17	58	24	103
Circuit 15	10	209	2,118	5,515	3,429	11,281
Palm Beach	10	209	2,118	5,515	3,429	11,281
Circuit 16	0	21	297	972	629	1,919
Monroe	0	21	297	972	629	1,919

Circuit Criminal ❖ Dispositions

CIRCUIT CRIMINAL DISPOSITIONS, Continued by Category and Circuit/County FY 2001-02

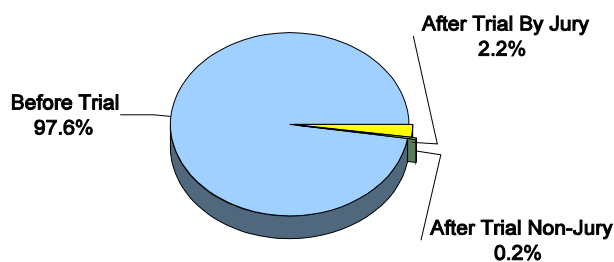
Circuit/County	Capital Murder	Violent Crimes	Crimes Against Persons	Crimes Against Property	Drugs	Total
Circuit 17	27	258	3,201	6,012	6,675	16,173
Broward	27	258	3,201	6,012	6,675	16,173
Circuit 18	1	217	1,578	2,746	1,936	6,478
Brevard	0	157	801	1,483	1,131	3,572
Seminole	1	60	777	1,263	805	2,906
Circuit 19	17	92	1,138	2,342	1,743	5,332
Indian River	1	11	456	861	544	1,873
Martin	1	20	212	507	480	1,220
Okeechobee	1	13	110	199	92	415
St. Lucie	14	48	360	775	627	1,824
Circuit 20	3	188	1,165	3,108	1,675	6,139
Charlotte	0	35	170	477	208	890
Collier	3	53	412	950	565	1,983
Glades	0	3	14	42	14	73
Hendry	0	13	64	141	94	312
Lee	0	84	505	1,498	794	2,881
State Total	209	4,165	33,094	80,857	51,563	169,888

Circuit Criminal ❖ Dispositions

STATEWIDE CIRCUIT CRIMINAL DISPOSITIONS by Case Type and Disposition Type FY 2001-02

Disposition Type	Capital Murder	Non-Capital Murder	Sexual Offenses	Robbery	Other Crimes Against Persons	Burglary	Theft Forgery Fraud	Worthless Checks	Other Crimes Against Property	Drugs	Other	Total
Before Trial												165,801
Speedy Trial	0	1	1	1	0	2	2	1	0	4	2	14
Dismissed	40	148	484	688	3,675	1,373	3,579	2,420	200	4,796	1,440	18,843
Transferred	0	0	15	11	416	119	147	10	19	152	760	1,649
Plea	44	571	2,279	3,868	21,320	12,728	30,735	2,241	1,235	42,967	16,221	134,209
Other	21	32	79	78	1,630	619	3,474	1,337	170	3,035	611	11,086
After Trial Non-Jury												354
Acquittal/Dismissal	0	2	7	7	50	11	27	3	7	10	23	147
Plea	0	1	1	2	7	10	17	1	3	7	15	64
Conviction	0	2	2	8	38	5	27	10	3	22	26	143
After Trial By Jury												3,733
Acquittal/Dismissal	10	53	125	124	364	118	107	4	12	197	157	1,271
Plea	7	4	12	19	56	27	17	1	2	56	39	240
Conviction	87	163	183	229	503	221	151	1	16	317	351	2,222
Total	209	977	3,188	5,035	28,059	15,233	38,283	6,029	1,667	51,563	19,645	169,888

**Criminal Dispositions
by Disposition Type for FY 2001-02**



Circuit Criminal ❖ Dispositions

CIRCUIT CRIMINAL JURY TRIAL DISPOSITIONS				
by Circuit				
FY 2001-02				
Circuit	Acquittals/ Dismissals	Pleas	Convictions	Total
First (Pensacola)	64	4	102	170
Second (Tallahassee)	59	3	122	184
Third (Lake City)	9	3	14	26
Fourth (Jacksonville)	32	52	87	171
Fifth (Tavares)	32	12	52	96
Sixth (Clearwater)	67	10	147	224
Seventh (Daytona Beach)	32	35	100	167
Eighth (Gainesville)	38	6	27	71
Ninth (Orlando)	93	2	163	258
Tenth (Bartow)	59	2	64	125
Eleventh (Miami)	136	0	313	449
Twelfth (Sarasota)	18	10	55	83
Thirteenth (Tampa)	69	21	142	232
Fourteenth (Panama City)	39	1	20	60
Fifteenth (West Palm Beach)	85	35	167	287
Sixteenth (Key West)	2	0	22	24
Seventeenth (Ft. Lauderdale)	232	13	322	567
Eighteenth (Sanford)	51	15	134	200
Nineteenth (Ft. Pierce)	94	5	77	176
Twentieth (Ft. Myers)	60	11	92	163
Total	1,271	240	2,222	3,733

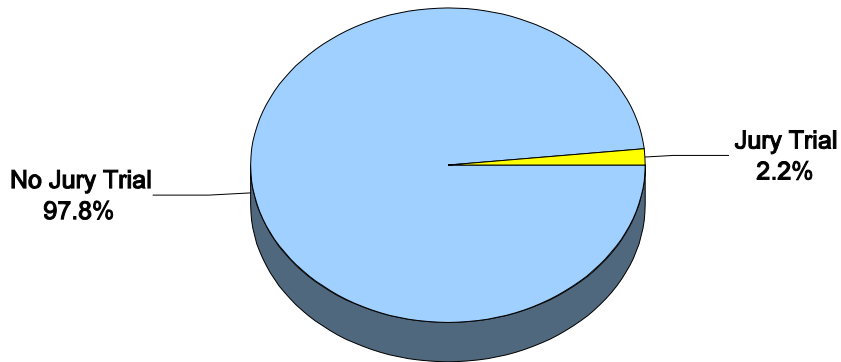
Circuit Criminal ❖ Dispositions

CIRCUIT CRIMINAL JURY TRIAL AND CONVICTION RATES						
by Circuit						
FY 2001-02						
Circuit	By Jury - Acquittals/Dismissals, Pleas, & Convictions	Total Dispositions	Jury Trial Rates	Total Pleas & Convictions	Total Dispositions (excludes Transferred and Other)	Conviction Rates
First (Pensacola)	170	8,202	2.1%	6,476	7,511	86.2%
Second (Tallahassee)	184	5,627	3.3%	4,817	5,396	89.3%
Third (Lake City)	26	1,589	1.6%	1,286	1,460	88.1%
Fourth (Jacksonville)	171	8,508	2.0%	6,076	8,458	71.8%
Fifth (Tavares)	96	8,978	1.1%	6,790	8,041	84.4%
Sixth (Clearwater)	224	12,814	1.7%	10,406	11,034	94.3%
Seventh (Daytona Beach)	167	7,395	2.3%	5,938	6,746	88.0%
Eighth (Gainesville)	71	4,441	1.6%	3,299	3,837	86.0%
Ninth (Orlando)	258	14,268	1.8%	10,721	13,490	79.5%
Tenth (Bartow)	125	6,189	2.0%	5,114	5,700	89.7%
Eleventh (Miami)	449	23,886	1.9%	19,983	22,063	90.6%
Twelfth (Sarasota)	83	3,846	2.2%	3,321	3,673	90.4%
Thirteenth (Tampa)	232	13,490	1.7%	10,569	11,928	88.6%
Fourteenth (Panama City)	60	3,333	1.8%	2,930	3,172	92.4%
Fifteenth (West Palm Beach)	287	11,281	2.5%	9,122	10,687	85.4%
Sixteenth (Key West)	24	1,919	1.3%	1,464	1,733	84.5%
Seventeenth (Ft. Lauderdale)	567	16,173	3.5%	13,907	15,728	88.4%
Eighteenth (Sanford)	200	6,478	3.1%	5,471	5,821	94.0%
Nineteenth (Ft. Pierce)	176	5,332	3.3%	4,201	4,843	86.7%
Twentieth (Ft. Myers)	163	6,139	2.7%	4,987	5,832	85.5%
Total	3,733	169,888	2.2%	136,878	157,153	87.1%

Circuit Criminal ❖ Dispositions

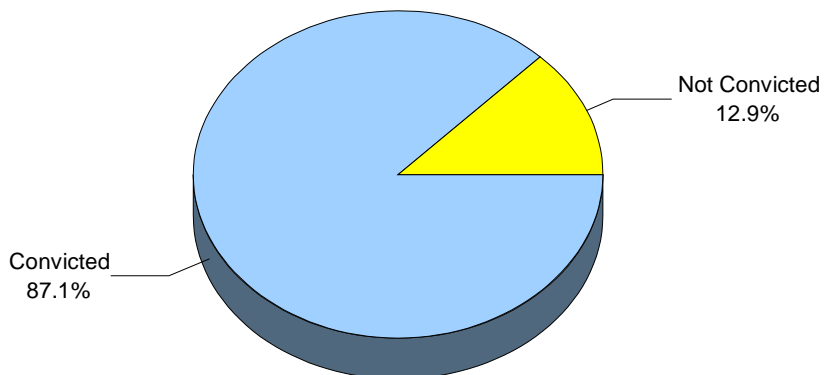
Circuit Criminal Jury Trial Rate

FY 2001-02



Circuit Criminal Conviction Rate

FY 2001-02



Circuit Criminal ❖ Special Proceedings

The Circuit Criminal division also involves special proceedings such as reopenings, no files, appeals filed from county court, post conviction relief motions, probation revocation hearings, bond hearings, and adversary preliminary hearings. **These data are provided by the 67 clerks of courts. However, special proceedings data are not audited for accuracy by the OSCA.**

Reopening - A reopening occurs when a case that has previously been reported as disposed is resubmitted to the court through a motion or petition.

No File - A no file occurs when all charges against a defendant are dropped because the prosecutor did not file an information or seek an indictment.

Appeal Filed From County Court - An appeal filed from county court is a request that a case be removed from the county court and sent to the circuit court in order for the case to be reviewed.

Post Conviction Relief Motion - A post conviction relief motion is a motion to vacate, set aside, or correct a sentence pursuant to rule 3.850, Florida Rules of Criminal Procedure.

Probation Revocation Hearing - A probation revocation hearing is a proceeding before a judge to determine whether the probation of a defendant should be modified or revoked following an alleged violation.

Bond Hearing - A bond hearing is a hearing in which a defendant's pretrial release status is considered by a circuit judge, or a county court judge acting as a circuit judge, at a special hearing for the purpose of setting or modifying bond or other pretrial release.

Adversary Preliminary Hearing - An adversary preliminary hearing is a proceeding before a judge in which evidence is presented so that the court can determine whether there is sufficient cause to hold the accused for trial.

Circuit Criminal ❖ Special Proceedings

CIRCUIT CRIMINAL SPECIAL PROCEEDINGS by Circuit FY 2001-02

Circuit	Reopenings	No Files	Appeals Filed	Post Conviction Relief Motions	Probation Revocation Hearings	Bond Hearings	Adversary Preliminary Hearings	Total
1	3,482	677	30	382	3,887	777	0	9,235
2	142	426	3	71	3,145	154	1	3,942
3	80	97	3	8	1,365	63	0	1,616
4	250	7,399	1	530	2,491	680	1	11,352
5	1,649	1,452	9	93	4,291	89	0	7,583
6	1,417	3,176	90	449	6,538	9,920	2	21,592
7	935	4,940	308	166	3,797	107	2	10,255
8	191	1,913	1	151	4,473	2,386	0	9,115
9	1,243	3,815	32	185	4,423	1,426	12	11,136
10	582	1,255	7	327	1,528	10	3	3,712
11	0	10,620	83	3,289	7,803	8,608	0	30,403
12	365	482	6	72	858	1,212	5	3,000
13	5,987	2,930	89	443	10,381	9,250	1,055	30,135
14	66	832	0	3	2,618	142	0	3,661
15	803	4,197	134	248	2,967	963	0	9,312
16	231	123	1	13	792	199	0	1,359
17	4,547	5,684	133	1,921	8,000	2,154	12	22,451
18	903	1,722	32	61	2,887	411	0	6,016
19	1,236	1,766	12	179	1,977	1,235	11	6,416
20	608	1,773	194	131	2,961	560	0	6,227
Total	24,717	55,279	1,168	8,722	77,182	40,346	1,104	208,518

- This page intentionally left blank -