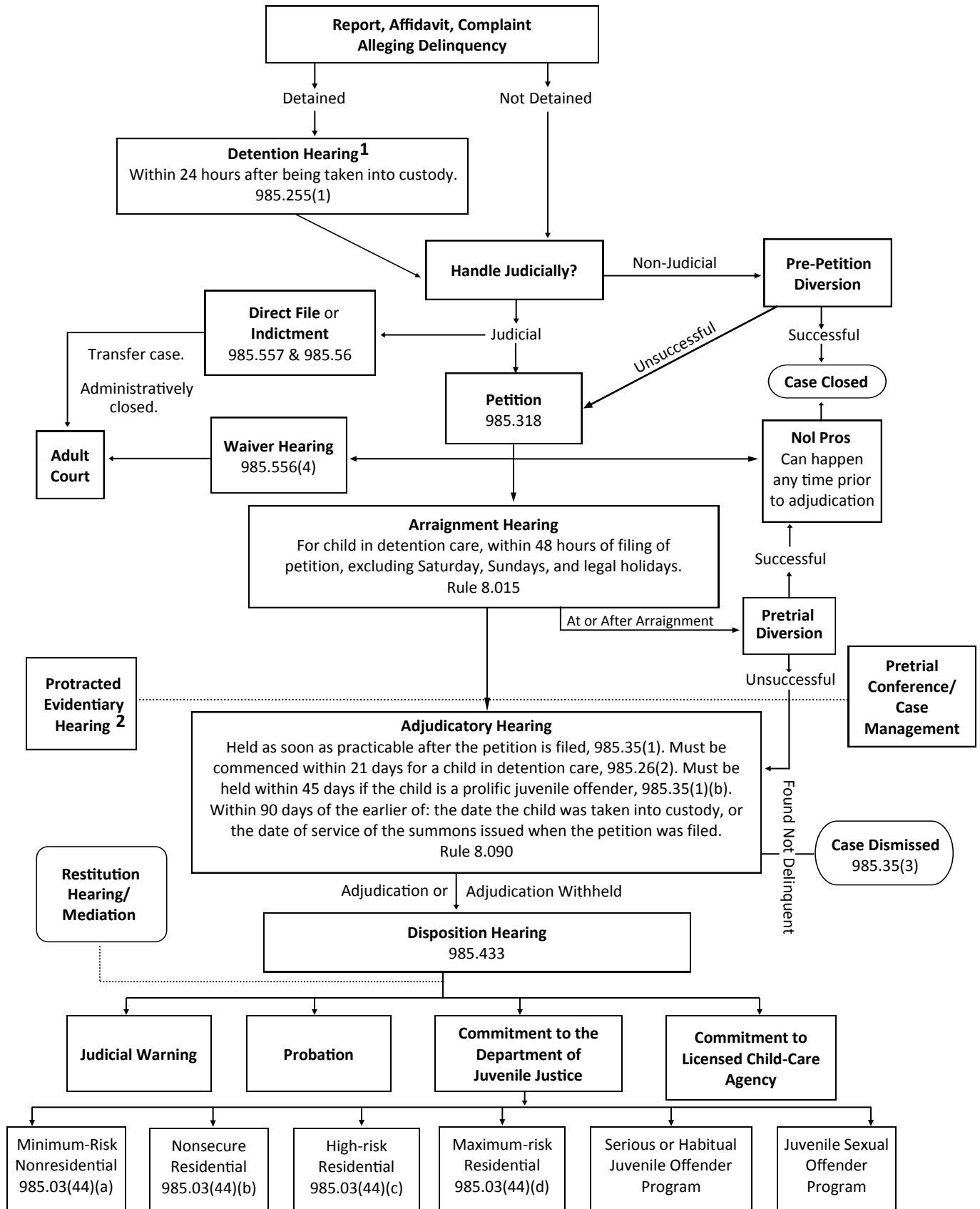


# DELINQUENCY CASE MANAGEMENT FLOWCHART



1 Additional considerations are necessary for prolific juvenile offenders. Section 985.255(1)(j) and 985.26(2)(c)-(d).

2 These hearings are used by some circuits but not all.

• The following hearings can be heard at any/various times throughout a case: competency, contempt of court, correction of order, violation of probation.