

Circuit Criminal ♦ Overview

The Circuit Criminal division includes the following five categories of felony offenses: capital murder, serious crimes against persons, less serious crimes against persons, crimes against property, and drug offenses. Within these categories are the following case types:

Capital Murder - capital murder offenses

Serious Crimes Against Persons - non-capital murder (examples of non-capital murder cases include: negligent manslaughter, vehicular manslaughter, non-premeditated murder, commission of a felony which causes death, aggravated manslaughter, and other similar offenses) and sexual offenses

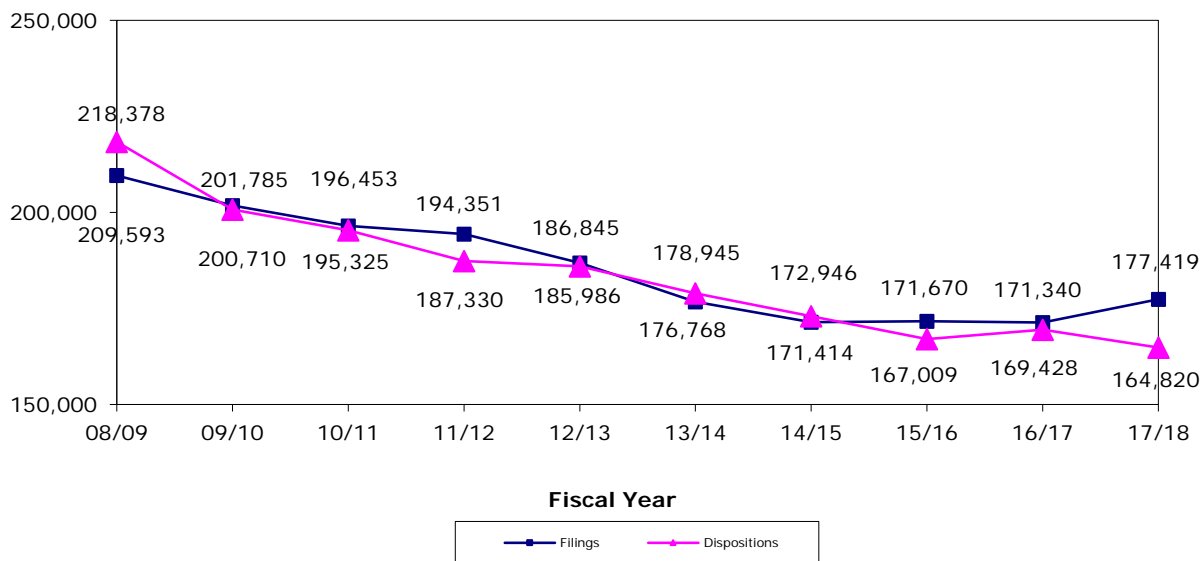
Less Serious Crimes Against Persons - robbery and other crimes against persons

Crimes Against Property - burglary, theft, forgery, fraud, worthless checks, other crimes against property, and other felony offenses (examples of other felony offenses are: weapon charges, resisting arrest, contempt of court, failure to appear, accessory after the fact, and book-making)

Drug Offenses - drug offenses

In the Circuit Criminal division, *filings* correspond to each defendant against whom an information or indictment is filed. *Dispositions* correspond to each defendant for whom a final judicial decision is rendered terminating a criminal proceeding by an acquittal, a dismissal, or a judgment stating the specific sentence (in the case of a conviction). *Charges (counts)* are defined as each individual offense with which a defendant is accused. These charges (counts) are tied directly to each filing. *Jury trials* are defined as trials in which a group of citizens is impaneled, selected, and sworn to determine the issues of fact in a case.

CIRCUIT CRIMINAL FILINGS AND DISPOSITIONS FY 2008-09 to FY 2017-18

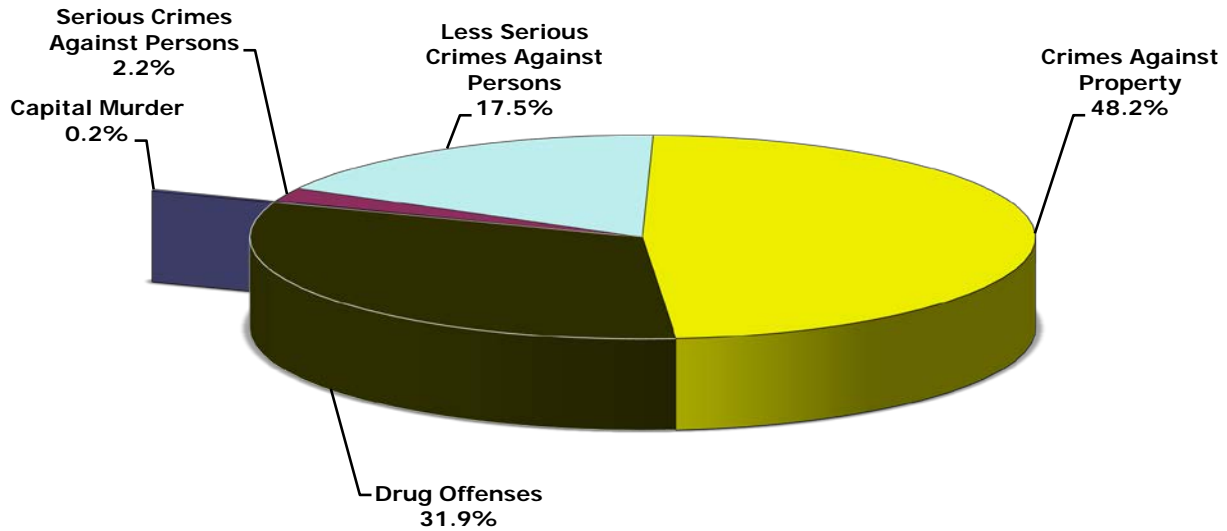


CIRCUIT CRIMINAL FILINGS
Statewide by Category/Case Type and Month
FY 2017-18

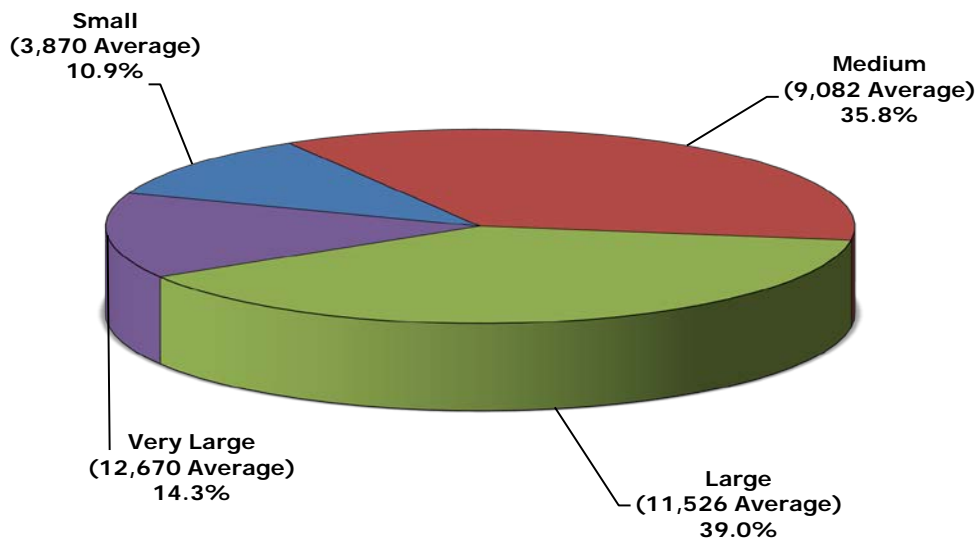
Category/ Case Type	Jul	Aug	Sep	Oct	Nov	Dec	Jan	Feb	Mar	Apr	May	Jun	Total
A. Capital Murder	23	23	19	24	36	29	30	42	36	37	25	46	370
1. Capital Murder	23	23	19	24	36	29	30	42	36	37	25	46	370
B. Serious Crimes Against Persons	311	345	270	318	324	293	323	302	321	368	367	321	3,863
1. Non-Capital Murder	103	113	101	98	122	107	113	113	99	117	110	105	1,301
2. Sexual Offenses	208	232	169	220	202	186	210	189	222	251	257	216	2,562
C. Less Serious Crimes Against Persons	2,633	2,877	2,145	2,851	2,484	2,378	2,734	2,354	2,605	2,561	2,703	2,711	31,036
1. Robbery	347	347	256	350	352	302	336	290	308	292	294	332	3,806
2. Other Crimes Against Persons	2,286	2,530	1,889	2,501	2,132	2,076	2,398	2,064	2,297	2,269	2,409	2,379	27,230
D. Crimes Against Property	7,571	8,173	5,970	7,519	6,720	6,410	7,740	6,908	7,175	7,047	7,163	7,152	85,548
1. Burglary	1,346	1,420	1,130	1,558	1,151	1,099	1,416	1,194	1,320	1,220	1,257	1,242	15,353
2. Theft, Forgery, Fraud	3,525	3,856	2,663	3,316	3,242	3,070	3,718	3,332	3,282	3,343	3,388	3,403	40,138
3. Worthless Checks	39	56	33	46	28	32	28	26	32	38	31	39	428
4. Other Crimes Against Property	149	133	118	130	118	110	132	123	144	130	140	139	1,566
5. Other	2,512	2,708	2,026	2,469	2,181	2,099	2,446	2,233	2,397	2,316	2,347	2,329	28,063
E. Drug Offenses	4,345	5,203	3,705	4,585	4,284	4,107	4,925	4,550	5,172	5,154	5,332	5,240	56,602
1. Drugs Offenses	4,345	5,203	3,705	4,585	4,284	4,107	4,925	4,550	5,172	5,154	5,332	5,240	56,602
Total	14,883	16,621	12,109	15,297	13,848	13,217	15,752	14,156	15,309	15,167	15,590	15,470	177,419

Circuit Criminal ◆ Filings

**CIRCUIT CRIMINAL FILINGS
by Category
FY 2017-18**



**CIRCUIT CRIMINAL FILINGS
by Circuit Size*
FY 2017-18**



*Small Circuits - 2nd, 3rd, 8th, 14th, 16th;
 Medium Circuits - 1st, 5th, 7th, 10th, 12th, 18th, 19th;
 Large Circuits - 4th, 6th, 9th, 13th, 15th, 20th; and
 Very Large Circuits - 11th, 17th (as defined in the Glossary).

CIRCUIT CRIMINAL FILINGS
by Circuit and Case Type
FY 2017-18

Circuit	Capital Murder	Non-Capital Murder	Sexual Offenses	Robbery	Other Crimes Against Persons	Burglary	Theft Forgery Fraud	Worthless Checks	Other Crimes Against Property	Drugs	Other	Total
1	14	50	144	143	2,313	1,132	2,609	21	136	3,816	1,966	12,344
2	14	37	120	97	931	383	1,089	64	45	1,286	821	4,887
3	8	10	47	23	391	197	482	13	29	906	397	2,503
4	3	124	174	256	1,331	756	1,879	3	65	2,621	1,158	8,370
5	23	70	168	200	1,610	894	2,692	29	97	2,893	1,953	10,629
6	22	59	193	218	2,162	1,339	4,055	73	140	6,076	3,347	17,684
7	12	42	97	154	1,675	734	2,019	43	87	3,096	1,387	9,346
8	8	38	74	92	642	349	1,112	13	30	1,088	576	4,022
9	52	122	239	379	1,942	1,270	3,170	4	132	4,674	2,028	14,012
10	17	56	137	132	1,647	885	1,849	24	66	3,977	1,435	10,225
11	30	218	183	618	2,217	1,263	3,247	15	129	3,810	1,944	13,674
12	8	39	110	124	931	489	1,635	5	50	2,116	840	6,347
13	23	70	157	228	1,990	1,072	3,092	47	111	4,136	1,617	12,543
14	3	32	145	80	1,020	481	1,042	3	46	2,031	2,007	6,890
15	51	99	100	293	1,084	1,092	2,058	18	49	2,560	790	8,194
16	3	4	6	15	206	79	156	9	22	376	173	1,049
17	42	97	121	393	1,844	1,142	3,088	5	101	3,284	1,549	11,666
18	16	46	128	142	1,372	713	2,117	18	94	2,877	1,707	9,230
19	16	28	84	70	816	343	1,116	13	49	1,992	923	5,450
20	5	60	135	149	1,106	740	1,631	8	88	2,987	1,445	8,354
Total	370	1,301	2,562	3,806	27,230	15,353	40,138	428	1,566	56,602	28,063	177,419

Circuit Criminal ◆ Filings

CIRCUIT CRIMINAL FILINGS
by Circuit/County and Category
FY 2017-18

Circuit/County	Capital Murder	Serious Crimes Against Persons	Less Serious Crimes Against Persons	Crimes Against Property	Drug Offenses	Total
Circuit 1	14	194	2,456	5,864	3,816	12,344
Escambia	5	87	1,347	2,836	1,744	6,019
Okaloosa	7	41	560	1,312	1,178	3,098
Santa Rosa	1	43	378	1,203	707	2,332
Walton	1	23	171	513	187	895
Circuit 2	14	157	1,028	2,402	1,286	4,887
Franklin	0	5	49	98	90	242
Gadsden	0	24	151	248	105	528
Jefferson	0	5	36	109	41	191
Leon	13	105	691	1,669	842	3,320
Liberty	0	2	26	78	74	180
Wakulla	1	16	75	200	134	426
Circuit 3	8	57	414	1,118	906	2,503
Columbia	1	17	116	350	279	763
Dixie	2	3	33	79	54	171
Hamilton	0	6	50	152	121	329
Lafayette	0	4	20	50	39	113
Madison	1	9	72	120	78	280
Suwannee	1	10	82	250	213	556
Taylor	3	8	41	117	122	291
Circuit 4	3	298	1,587	3,861	2,621	8,370
Clay	1	42	235	612	368	1,258
Duval	1	250	1,221	2,919	1,934	6,325
Nassau	1	6	131	330	319	787

CIRCUIT CRIMINAL FILINGS
by Circuit/County and Category
FY 2017-18

Circuit/County	Capital Murder	Serious Crimes Against Persons	Less Serious Crimes Against Persons	Crimes Against Property	Drug Offenses	Total
Circuit 5	23	238	1,810	5,665	2,893	10,629
Citrus	0	23	220	552	320	1,115
Hernando	5	49	405	1,326	583	2,368
Lake	11	62	468	1,315	815	2,671
Marion	2	84	516	1,979	757	3,338
Sumter	5	20	201	493	418	1,137
Circuit 6	22	252	2,380	8,954	6,076	17,684
Pasco	5	128	928	3,124	1,860	6,045
Pinellas	17	124	1,452	5,830	4,216	11,639
Circuit 7	12	139	1,829	4,270	3,096	9,346
Flagler	3	12	142	324	282	763
Putnam	2	23	185	580	414	1,204
St. Johns	0	24	306	592	487	1,409
Volusia	7	80	1,196	2,774	1,913	5,970
Circuit 8	8	112	734	2,080	1,088	4,022
Alachua	4	71	422	1,268	566	2,331
Baker	0	12	80	223	155	470
Bradford	0	6	70	232	104	412
Gilchrist	0	5	44	81	57	187
Levy	4	14	94	209	166	487
Union	0	4	24	67	40	135
Circuit 9	52	361	2,321	6,604	4,674	14,012
Orange	31	264	1,838	5,357	3,570	11,060
Osceola	21	97	483	1,247	1,104	2,952

Circuit Criminal ◆ Filings

CIRCUIT CRIMINAL FILINGS
by Circuit/County and Category
FY 2017-18

Circuit/County	Capital Murder	Serious Crimes Against Persons	Less Serious Crimes Against Persons	Crimes Against Property	Drug Offenses	Total
Circuit 10	17	193	1,779	4,259	3,977	10,225
Hardee	0	7	53	124	149	333
Highlands	2	40	134	558	295	1,029
Polk	15	146	1,592	3,577	3,533	8,863
Circuit 11	30	401	2,835	6,598	3,810	13,674
Miami-Dade	30	401	2,835	6,598	3,810	13,674
Circuit 12	8	149	1,055	3,019	2,116	6,347
Desoto	2	14	68	256	111	451
Manatee	6	59	437	1,266	874	2,642
Sarasota	0	76	550	1,497	1,131	3,254
Circuit 13	23	227	2,218	5,939	4,136	12,543
Hillsborough	23	227	2,218	5,939	4,136	12,543
Circuit 14	3	177	1,100	3,579	2,031	6,890
Bay	2	111	609	2,665	1,146	4,533
Calhoun	0	13	73	109	101	296
Gulf	0	8	44	93	92	237
Holmes	0	11	146	248	196	601
Jackson	1	15	153	309	262	740
Washington	0	19	75	155	234	483
Circuit 15	51	199	1,377	4,007	2,560	8,194
Palm Beach	51	199	1,377	4,007	2,560	8,194
Circuit 16	3	10	221	439	376	1,049
Monroe	3	10	221	439	376	1,049

CIRCUIT CRIMINAL FILINGS
by Circuit/County and Category
FY 2017-18

Circuit/County	Capital Murder	Serious Crimes Against Persons	Less Serious Crimes Against Persons	Crimes Against Property	Drug Offenses	Total
Circuit 17	42	218	2,237	5,885	3,284	11,666
Broward	42	218	2,237	5,885	3,284	11,666
Circuit 18	16	174	1,514	4,649	2,877	9,230
Brevard	6	105	1,072	3,093	1,911	6,187
Seminole	10	69	442	1,556	966	3,043
Circuit 19	16	112	886	2,444	1,992	5,450
Indian River	6	21	190	635	331	1,183
Martin	1	22	138	486	622	1,269
Okeechobee	1	12	103	206	290	612
St. Lucie	8	57	455	1,117	749	2,386
Circuit 20	5	195	1,255	3,912	2,987	8,354
Charlotte	0	19	202	792	704	1,717
Collier	0	45	336	709	540	1,630
Glades	0	1	27	97	20	145
Hendry	0	12	109	255	231	607
Lee	5	118	581	2,059	1,492	4,255
Total	370	3,863	31,036	85,548	56,602	177,419

Circuit Criminal ◆ Filings

CIRCUIT CRIMINAL CHARGES (COUNTS)
by Circuit/County
FY 2017-18

Circuit/County	Total Filings (Defendants)	Total Charges (Counts)	Number of Charges (Counts) per Filing
Circuit 1	12,344	27,357	2.2
Escambia	6,019	13,930	2.3
Okaloosa	3,098	6,823	2.2
Santa Rosa	2,332	4,728	2.0
Walton	895	1,876	2.1
Circuit 2	4,887	11,329	2.3
Franklin	242	382	1.6
Gadsden	528	1,100	2.1
Jefferson	191	405	2.1
Leon	3,320	8,176	2.5
Liberty	180	393	2.2
Wakulla	426	873	2.0
Circuit 3	2,503	5,771	2.3
Columbia	763	1,494	2.0
Dixie	171	400	2.3
Hamilton	329	1,195	3.6
Lafayette	113	259	2.3
Madison	280	591	2.1
Suwannee	556	1,266	2.3
Taylor	291	566	1.9
Circuit 4	8,370	18,605	2.2
Clay	1,258	2,415	1.9
Duval	6,325	14,736	2.3
Nassau	787	1,454	1.8

CIRCUIT CRIMINAL CHARGES (COUNTS)
by Circuit/County
FY 2017-18

Circuit/County	Total Filings (Defendants)	Total Charges (Counts)	Number of Charges (Counts) per Filing
Circuit 5	10,629	22,623	2.1
Citrus	1,115	2,292	2.1
Hernando	2,368	4,791	2.0
Lake	2,671	6,114	2.3
Marion	3,338	6,674	2.0
Sumter	1,137	2,752	2.4
Circuit 6	17,684	30,754	1.7
Pasco	6,045	11,111	1.8
Pinellas	11,639	19,643	1.7
Circuit 7	9,346	19,400	2.1
Flagler	763	1,522	2.0
Putnam	1,204	2,553	2.1
St. Johns	1,409	2,866	2.0
Volusia	5,970	12,459	2.1
Circuit 8	4,022	8,451	2.1
Alachua	2,331	4,778	2.0
Baker	470	1,046	2.2
Bradford	412	856	2.1
Gilchrist	187	395	2.1
Levy	487	1,023	2.1
Union	135	353	2.6
Circuit 9	14,012	29,440	2.1
Orange	11,060	23,102	2.1
Osceola	2,952	6,338	2.1

Circuit Criminal ♦ Filings

CIRCUIT CRIMINAL CHARGES (COUNTS)
by Circuit/County
FY 2017-18

Circuit/County	Total Filings (Defendants)	Total Charges (Counts)	Number of Charges (Counts) per Filing
Circuit 10	10,225	30,394	3.0
Hardee	333	913	2.7
Highlands	1,029	4,577	4.4
Polk	8,863	24,904	2.8
Circuit 11	13,674	27,994	2.0
Miami-Dade	13,674	27,994	2.0
Circuit 12	6,347	14,383	2.3
Desoto	451	1,222	2.7
Manatee	2,642	5,663	2.1
Sarasota	3,254	7,498	2.3
Circuit 13	12,543	27,378	2.2
Hillsborough	12,543	27,378	2.2
Circuit 14	6,890	13,946	2.0
Bay	4,533	9,154	2.0
Calhoun	296	560	1.9
Gulf	237	508	2.1
Holmes	601	1,215	2.0
Jackson	740	1,619	2.2
Washington	483	890	1.8
Circuit 15	8,194	18,300	2.2
Palm Beach	8,194	18,300	2.2
Circuit 16	1,049	3,222	3.1
Monroe	1,049	3,222	3.1

CIRCUIT CRIMINAL CHARGES (COUNTS)
by Circuit/County
FY 2017-18

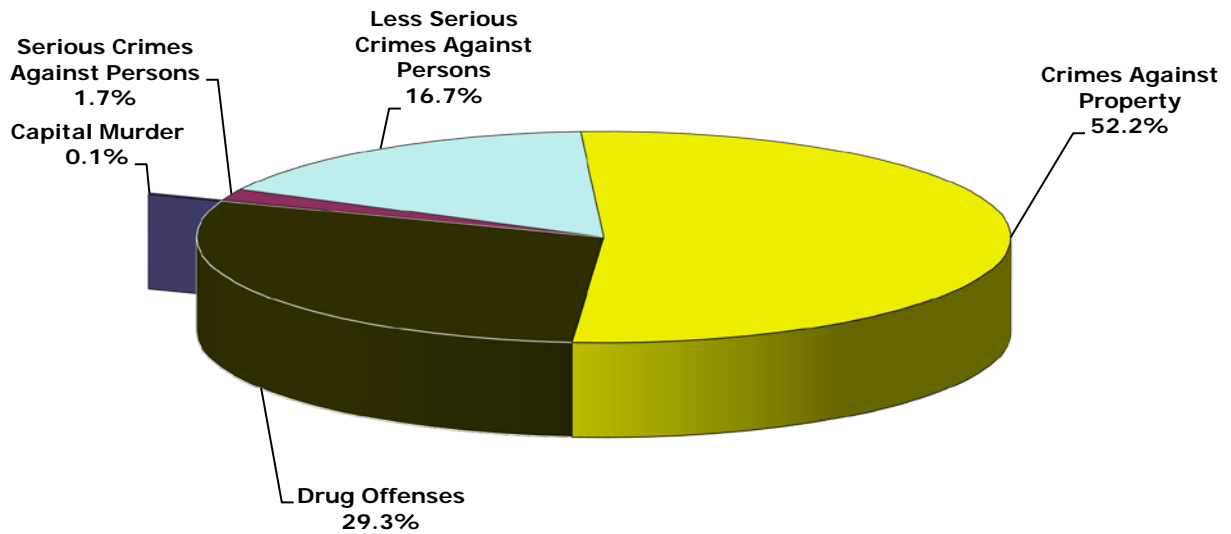
Circuit/County	Total Filings (Defendants)	Total Charges (Counts)	Number of Charges (Counts) per Filing
Circuit 17	11,666	23,981	2.1
Broward	11,666	23,981	2.1
Circuit 18	9,230	21,613	2.3
Brevard	6,187	14,976	2.4
Seminole	3,043	6,637	2.2
Circuit 19	5,450	14,429	2.6
Indian River	1,183	2,744	2.3
Martin	1,269	2,982	2.3
Okeechobee	612	1,541	2.5
St. Lucie	2,386	7,162	3.0
Circuit 20	8,354	17,797	2.1
Charlotte	1,717	3,970	2.3
Collier	1,630	3,143	1.9
Glades	145	293	2.0
Hendry	607	1,562	2.6
Lee	4,255	8,829	2.1
Total	177,419	387,167	2.2

Circuit Criminal ♦ Dispositions

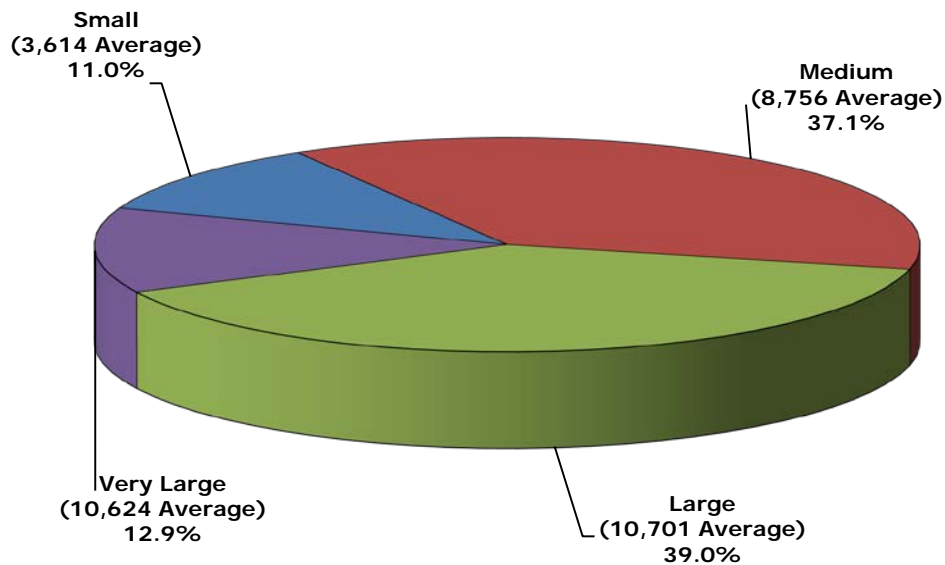
CIRCUIT CRIMINAL DISPOSITIONS
Statewide by Category/Case Type and Month
FY 2017-18

Category/ Case Type	Jul	Aug	Sep	Oct	Nov	Dec	Jan	Feb	Mar	Apr	May	Jun	Total
A. Capital Murder	21	19	10	20	15	22	18	19	11	23	37	26	241
1. Capital Murder	21	19	10	20	15	22	18	19	11	23	37	26	241
B. Serious Crimes Against Persons	188	302	171	270	251	188	220	233	272	257	252	252	2,856
1. Non-Capital Murder	67	106	59	96	92	63	85	86	104	97	116	89	1,060
2. Sexual Offenses	121	196	112	174	159	125	135	147	168	160	136	163	1,796
C. Less Serious Crimes Against Persons	1,954	2,653	1,731	2,599	2,325	1,920	2,459	2,366	2,306	2,290	2,487	2,365	27,455
1. Robbery	248	321	196	282	265	236	279	274	286	282	290	284	3,243
2. Other Crimes Against Persons	1,706	2,332	1,535	2,317	2,060	1,684	2,180	2,092	2,020	2,008	2,197	2,081	24,212
D. Crimes Against Property	6,849	8,746	5,408	8,312	7,177	5,914	7,400	7,083	7,281	7,085	7,349	7,353	85,957
1. Burglary	1,134	1,438	857	1,380	1,130	954	1,163	1,217	1,200	1,084	1,199	1,098	13,854
2. Theft, Forgery, Fraud	3,017	3,997	2,422	3,683	3,226	2,781	3,374	3,150	3,324	3,353	3,398	3,422	39,147
3. Worthless Checks	64	59	51	51	40	49	55	35	45	50	48	71	618
4. Other Crimes Against Property	154	147	88	146	133	108	116	146	123	143	128	137	1,569
5. Other	2,480	3,105	1,990	3,052	2,648	2,022	2,692	2,535	2,589	2,455	2,576	2,625	30,769
E. Drug Offenses	3,430	4,642	3,141	4,473	4,031	3,223	4,225	3,927	4,086	4,102	4,518	4,513	48,311
1. Drugs Offenses	3,430	4,642	3,141	4,473	4,031	3,223	4,225	3,927	4,086	4,102	4,518	4,513	48,311
Total	12,442	16,362	10,461	15,674	13,799	11,267	14,322	13,628	13,956	13,757	14,643	14,509	164,820

CIRCUIT CRIMINAL DISPOSITIONS
by Category
FY 2017-18



CIRCUIT CRIMINAL DISPOSITIONS
by Circuit Size*
FY 2017-18



*Small Circuits - 2nd, 3rd, 8th, 14th, 16th;
 Medium Circuits - 1st, 5th, 7th, 10th, 12th, 18th, 19th;
 Large Circuits - 4th, 6th, 9th, 13th, 15th, 20th; and
 Very Large Circuits - 11th, 17th (as defined in the Glossary).

Circuit Criminal ♦ Dispositions

CIRCUIT CRIMINAL DISPOSITIONS
by Circuit and Case Type
FY 2017-18

Circuit	Capital Murder	Non-Capital Murder	Sexual Offenses	Robbery	Other Crimes Against Persons	Burglary	Theft Forgery Fraud	Worthless Checks	Other Crimes Against Property	Drugs	Other	Total
1	17	44	127	136	2,140	948	2,650	38	151	3,421	2,520	12,192
2	8	31	72	78	893	362	1,098	70	61	1,233	898	4,804
3	6	8	32	19	370	183	482	16	39	867	458	2,480
4	15	124	129	232	1,278	841	1,977	7	62	2,466	1,252	8,383
5	14	41	107	161	1,501	906	2,699	78	100	2,743	1,987	10,337
6	23	84	130	184	2,039	1,310	3,997	116	142	5,449	3,154	16,628
7	14	39	78	155	1,694	711	2,082	67	109	2,791	1,581	9,321
8	1	27	63	82	623	393	1,016	14	31	1,075	647	3,972
9	33	102	169	299	1,590	1,067	3,141	7	115	3,858	2,081	12,462
10	11	44	111	128	1,653	801	1,988	22	74	2,337	2,767	9,936
11	21	165	87	512	2,021	1,072	3,266	50	128	3,591	1,907	12,820
12	7	44	73	114	796	491	1,623	6	50	1,801	873	5,878
13	8	45	69	202	1,473	920	2,600	38	91	3,415	1,575	10,436
14	2	24	94	67	881	418	1,040	4	46	1,854	2,033	6,463
15	25	100	98	276	1,164	1,014	2,190	31	64	2,493	972	8,427
16	1	0	1	2	50	30	77	4	6	129	51	351
17	18	58	56	299	1,160	813	2,320	3	72	2,262	1,366	8,427
18	11	30	108	123	1,198	619	2,155	27	88	2,236	1,892	8,487
19	3	17	80	55	762	296	1,062	15	59	1,682	1,113	5,144
20	3	33	112	119	926	659	1,684	5	81	2,608	1,642	7,872
Total	241	1,060	1,796	3,243	24,212	13,854	39,147	618	1,569	48,311	30,769	164,820

CIRCUIT CRIMINAL DISPOSITIONS
by Circuit/County and Category
FY 2017-18

Circuit/County	Capital Murder	Serious Crimes Against Persons	Less Serious Crimes Against Persons	Crimes Against Property	Drug Offenses	Total
Circuit 1	17	171	2,276	6,307	3,421	12,192
Escambia	9	82	1,304	3,274	1,546	6,215
Okaloosa	4	32	512	1,447	1,140	3,135
Santa Rosa	3	36	292	1,046	572	1,949
Walton	1	21	168	540	163	893
Circuit 2	8	103	971	2,489	1,233	4,804
Franklin	0	3	31	109	103	246
Gadsden	3	14	151	270	106	544
Jefferson	0	0	39	104	38	181
Leon	5	74	658	1,744	795	3,276
Liberty	0	3	22	75	69	169
Wakulla	0	9	70	187	122	388
Circuit 3	6	40	389	1,178	867	2,480
Columbia	1	19	126	418	256	820
Dixie	1	1	30	71	57	160
Hamilton	2	3	42	126	93	266
Lafayette	0	3	14	47	27	91
Madison	0	4	57	137	93	291
Suwannee	1	7	83	260	224	575
Taylor	1	3	37	119	117	277
Circuit 4	15	253	1,510	4,139	2,466	8,383
Clay	1	32	244	734	376	1,387
Duval	14	212	1,146	3,046	1,756	6,174
Nassau	0	9	120	359	334	822

Circuit Criminal ♦ Dispositions

**CIRCUIT CRIMINAL DISPOSITIONS
by Circuit/County and Category
FY 2017-18**

Circuit/County	Capital Murder	Serious Crimes Against Persons	Less Serious Crimes Against Persons	Crimes Against Property	Drug Offenses	Total
Circuit 5	14	148	1,662	5,770	2,743	10,337
Citrus	3	32	221	576	345	1,177
Hernando	1	20	348	1,429	564	2,362
Lake	2	36	458	1,397	743	2,636
Marion	8	41	439	1,893	741	3,122
Sumter	0	19	196	475	350	1,040
Circuit 6	23	214	2,223	8,719	5,449	16,628
Pasco	8	69	798	2,958	1,571	5,404
Pinellas	15	145	1,425	5,761	3,878	11,224
Circuit 7	14	117	1,849	4,550	2,791	9,321
Flagler	2	17	150	360	226	755
Putnam	3	13	145	616	359	1,136
St. Johns	2	19	311	678	452	1,462
Volusia	7	68	1,243	2,896	1,754	5,968
Circuit 8	1	90	705	2,101	1,075	3,972
Alachua	0	55	427	1,280	555	2,317
Baker	0	10	69	206	132	417
Bradford	1	9	77	243	132	462
Gilchrist	0	2	36	81	61	180
Levy	0	8	72	225	162	467
Union	0	6	24	66	33	129
Circuit 9	33	271	1,889	6,411	3,858	12,462
Orange	17	203	1,446	4,808	2,797	9,271
Osceola	16	68	443	1,603	1,061	3,191

CIRCUIT CRIMINAL DISPOSITIONS
by Circuit/County and Category
FY 2017-18

Circuit/County	Capital Murder	Serious Crimes Against Persons	Less Serious Crimes Against Persons	Crimes Against Property	Drug Offenses	Total
Circuit 10	11	155	1,781	5,652	2,337	9,936
Hardee	0	3	46	115	117	281
Highlands	0	21	142	534	192	889
Polk	11	131	1,593	5,003	2,028	8,766
Circuit 11	21	252	2,533	6,423	3,591	12,820
Miami-Dade	21	252	2,533	6,423	3,591	12,820
Circuit 12	7	117	910	3,043	1,801	5,878
Desoto	0	8	72	285	120	485
Manatee	5	58	370	1,306	689	2,428
Sarasota	2	51	468	1,452	992	2,965
Circuit 13	8	114	1,675	5,224	3,415	10,436
Hillsborough	8	114	1,675	5,224	3,415	10,436
Circuit 14	2	118	948	3,541	1,854	6,463
Bay	2	79	511	2,607	1,083	4,282
Calhoun	0	5	66	130	111	312
Gulf	0	2	34	83	85	204
Holmes	0	11	107	244	167	529
Jackson	0	11	136	308	200	655
Washington	0	10	94	169	208	481
Circuit 15	25	198	1,440	4,271	2,493	8,427
Palm Beach	25	198	1,440	4,271	2,493	8,427
Circuit 16	1	1	52	168	129	351
Monroe	1	1	52	168	129	351

Circuit Criminal ♦ Dispositions

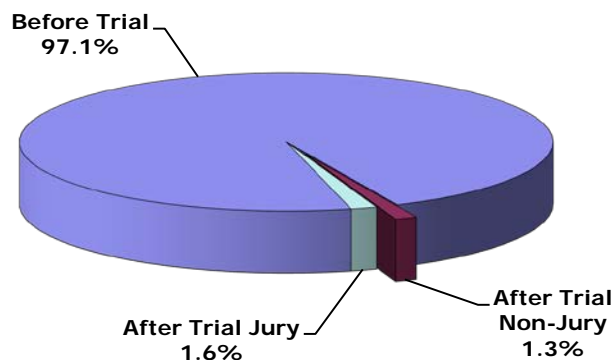
CIRCUIT CRIMINAL DISPOSITIONS
by Circuit/County and Category
FY 2017-18

Circuit/County	Capital Murder	Serious Crimes Against Persons	Less Serious Crimes Against Persons	Crimes Against Property	Drug Offenses	Total
Circuit 17	18	114	1,459	4,574	2,262	8,427
Broward	18	114	1,459	4,574	2,262	8,427
Circuit 18	11	138	1,321	4,781	2,236	8,487
Brevard	5	77	887	3,053	1,448	5,470
Seminole	6	61	434	1,728	788	3,017
Circuit 19	3	97	817	2,545	1,682	5,144
Indian River	0	20	171	644	278	1,113
Martin	0	17	142	540	433	1,132
Okeechobee	1	15	100	260	257	633
St. Lucie	2	45	404	1,101	714	2,266
Circuit 20	3	145	1,045	4,071	2,608	7,872
Charlotte	0	12	172	878	523	1,585
Collier	1	43	279	825	469	1,617
Glades	0	5	18	104	21	148
Hendry	1	19	81	314	200	615
Lee	1	66	495	1,950	1,395	3,907
Total	241	2,856	27,455	85,957	48,311	164,820

CIRCUIT CRIMINAL DISPOSITIONS
Statewide by Disposition Type and Case Type
FY 2017-18

Disposition Type	Capital Murder	Non-Capital Murder	Sexual Offenses	Robbery	Other Crimes Against Persons	Burglary	Theft Forgery Fraud	Worthless Checks	Other Crimes Against Property	Drugs	Other	Total
A. Before Trial	99	789	1,500	3,045	23,244	13,512	38,518	614	1,511	47,337	29,853	160,022
1. Speedy Trial	0	0	0	0	1	0	0	0	0	0	0	1
2. Dismissed	25	98	213	386	3,323	1,019	3,095	282	175	3,834	1,646	14,096
3. Transferred	0	4	24	21	830	222	431	2	64	510	4,409	6,517
4. Plea	57	642	1,166	2,471	17,028	11,534	30,908	253	1,067	39,485	22,976	127,587
5. Other*	17	45	97	167	2,062	737	4,084	77	205	3,508	822	11,821
B. After Trial Non-Jury	0	9	30	24	358	124	458	4	39	650	510	2,206
1. Acquittal/Dismissal	0	3	2	0	22	7	9	0	5	37	10	95
2. Plea	0	3	27	23	328	115	446	4	34	608	487	2,075
3. Conviction	0	3	1	1	8	2	3	0	0	5	13	36
C. After Trial Jury	142	262	266	174	610	218	171	0	19	324	406	2,592
1. Acquittal/Dismissal	13	47	69	57	209	45	46	0	10	74	80	650
2. Plea	5	15	2	4	24	11	26	0	0	36	35	158
3. Conviction	124	200	195	113	377	162	99	0	9	214	291	1,784
Total	241	1,060	1,796	3,243	24,212	13,854	39,147	618	1,569	48,311	30,769	164,820

CIRCUIT CRIMINAL DISPOSITIONS
by Disposition Type
FY 2017-18



*The disposition type "Other" is used to report cases disposed for: defendants placed on deferred prosecution or other pretrial diversion or probation programs approved after an information or an indictment is filed, defendants declared mentally or physically unable to stand trial, cases disposed upon estreatment of a bond, cases that are nolle prosequi (no further prosecution) for administrative reasons, or similar matters.

Circuit Criminal ♦ Dispositions

CIRCUIT CRIMINAL JURY TRIAL DISPOSITIONS
by Circuit
FY 2017-18

Circuit (Circuit Seat)	Acquittals/Dismissals	Pleas	Convictions	Total
First (Pensacola)	45	4	119	168
Second (Tallahassee)	44	1	105	150
Third (Lake City)	9	0	24	33
Fourth (Jacksonville)	12	15	103	130
Fifth (Tavares)	31	4	110	145
Sixth (Clearwater)	36	5	124	165
Seventh (Daytona Beach)	20	8	90	118
Eighth (Gainesville)	15	4	36	55
Ninth (Orlando)	79	2	113	194
Tenth (Bartow)	37	0	155	192
Eleventh (Miami-Dade)	88	45	131	264
Twelfth (Sarasota)	21	8	84	113
Thirteenth (Tampa)	23	4	81	108
Fourteenth (Panama City)	14	2	64	80
Fifteenth (West Palm Beach)	43	2	117	162
Sixteenth (Key West)	0	1	2	3
Seventeenth (Ft. Lauderdale)	57	36	74	167
Eighteenth (Sanford)	24	11	74	109
Nineteenth (Ft. Pierce)	9	1	54	64
Twentieth (Ft. Myers)	43	5	124	172
Total	650	158	1,784	2,592

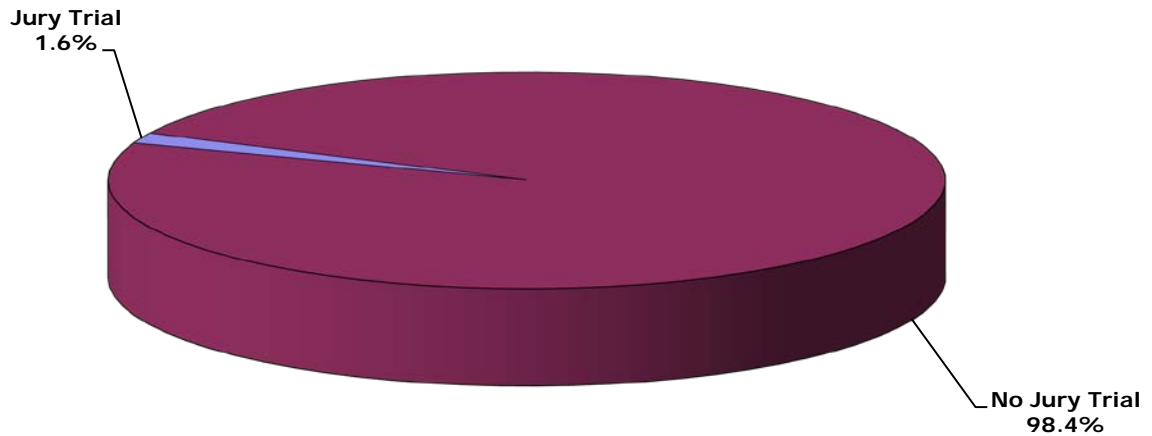
**CIRCUIT CRIMINAL JURY TRIAL and
GUILTY DISPOSITION RATES*
by Circuit
FY 2017-18**

Circuit (Circuit Seat)	Jury Trials (includes Acquittal/ Dismissal, Pleas, and Convictions)	Total Dispositions	Jury Trial Rates	GUILTY Dispositions (includes Pleas and Convictions)	Total Dispositions (excludes Transferred and Other)	GUILTY Disposition Rates
First (Pensacola)	168	12,192	1.4%	9,786	11,605	84.3%
Second (Tallahassee)	150	4,804	3.1%	3,873	4,377	88.5%
Third (Lake City)	33	2,480	1.3%	1,893	2,239	84.5%
Fourth (Jacksonville)	130	8,383	1.6%	7,407	7,951	93.2%
Fifth (Tavares)	145	10,337	1.4%	8,336	9,388	88.8%
Sixth (Clearwater)	165	16,628	1.0%	13,992	14,649	95.5%
Seventh (Daytona Beach)	118	9,321	1.3%	8,022	8,592	93.4%
Eighth (Gainesville)	55	3,972	1.4%	3,264	3,611	90.4%
Ninth (Orlando)	194	12,462	1.6%	9,352	11,518	81.2%
Tenth (Bartow)	192	9,936	1.9%	8,167	8,924	91.5%
Eleventh (Miami-Dade)	264	12,820	2.1%	8,380	9,883	84.8%
Twelfth (Sarasota)	113	5,878	1.9%	4,924	5,440	90.5%
Thirteenth (Tampa)	108	10,436	1.0%	8,801	9,024	97.5%
Fourteenth (Panama City)	80	6,463	1.2%	4,085	4,643	88.0%
Fifteenth (West Palm Beach)	162	8,427	1.9%	7,300	7,793	93.7%
Sixteenth (Key West)	3	351	0.9%	273	284	96.1%
Seventeenth (Ft. Lauderdale)	167	8,427	2.0%	6,361	7,309	87.0%
Eighteenth (Sanford)	109	8,487	1.3%	6,947	7,449	93.3%
Nineteenth (Ft. Pierce)	64	5,144	1.2%	4,239	4,694	90.3%
Twentieth (Ft. Myers)	172	7,872	2.2%	6,238	7,109	87.7%
Total	2,592	164,820	1.6%	131,640	146,482	89.9%

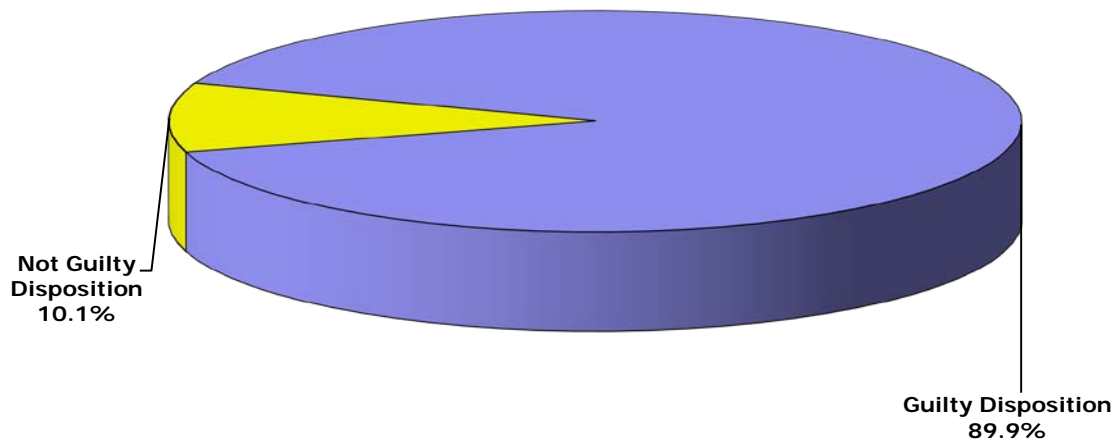
*Jury trial and guilty disposition rates are not intended as a measure of efficiency of the judiciary, state attorneys, or public defenders.

Circuit Criminal ♦ Dispositions

**CIRCUIT CRIMINAL JURY TRIAL RATE
FY 2017-18**



**CIRCUIT CRIMINAL GUILTY DISPOSITION RATE
FY 2017-18**



The Circuit Criminal division also includes other statistics such as clearance rates, reopenings, no files, appeals filed from county court, post conviction relief motions, probation revocation hearings, bond hearings, and adversary preliminary hearings. **These data are provided by the 67 clerks of court.**

Clearance Rates - The clearance rate is a useful measure of the responsiveness of a court to the demand for services, and is nationally recognized as a measure of court performance. The rate is determined by dividing the total number of cases *disposed* by the total number of cases *filed* during a specific time period. If a court received 1,000 new cases a month and disposed of 900 cases within the same month, the clearance rate for that month would be 90%. A 100% clearance rate means that a court is disposing of at least as many cases as have been filed during the reporting period. Thus, where clearance rates exceed 100%, those circuits are actually disposing of cases more quickly than cases are being filed for the period in question.

Reopenings - A reopening occurs when a case that has previously been reported as disposed is resubmitted to the court through a motion or petition.

No Files - A no file occurs when all charges against a defendant are dropped and the prosecutor did not file an information or seek an indictment.

Appeals Filed From County Court - An appeal filed from county court is a request that a case be removed from the county court and sent to the circuit court for review.

Post Conviction Relief Motions - A post conviction relief motion is a motion to vacate, set aside, or correct a sentence pursuant to rule 3.850, Florida Rules of Criminal Procedure.

Probation Revocation Hearings - A probation revocation hearing is a proceeding in which a judge determines whether a defendant's probation should be modified or revoked following an alleged violation.

Bond Hearings - A bond hearing is a proceeding in which a judge considers a defendant's pretrial release status for the purpose of setting or modifying bond or other pretrial release status.

Adversary Preliminary Hearings - An adversary preliminary hearing is a proceeding in which a judge considers evidence presented to determine whether there is sufficient cause to hold the accused for trial.

Circuit Criminal ♦ Other Statistics

**CIRCUIT CRIMINAL CLEARANCE RATES
by Circuit
FY 2017-18**

Circuit	Filings	Dispositions	Clearance Rates
1	12,344	12,192	98.8%
2	4,887	4,804	98.3%
3	2,503	2,480	99.1%
4	8,370	8,383	100.2%
5	10,629	10,337	97.3%
6	17,684	16,628	94.0%
7	9,346	9,321	99.7%
8	4,022	3,972	98.8%
9	14,012	12,462	88.9%
10	10,225	9,936	97.2%
11	13,674	12,820	93.8%
12	6,347	5,878	92.6%
13	12,543	10,436	83.2%
14	6,890	6,463	93.8%
15	8,194	8,427	102.8%
16	1,049	351	33.5%
17	11,666	8,427	72.2%
18	9,230	8,487	92.0%
19	5,450	5,144	94.4%
20	8,354	7,872	94.2%
Total	177,419	164,820	92.9%

**CIRCUIT CRIMINAL SPECIAL PROCEEDINGS
by Circuit
FY 2017-18**

Circuit	Reopenings	No Files	Appeal Filed From County Court	Post Conviction Relief Motions	Probation Revocation Hearings	Bond Hearings	Adversary Preliminary Hearings	Total
1	10,412	625	23	535	5,987	1,128	2	18,712
2	2,761	274	6	211	1,967	43	0	5,262
3	787	635	2	163	1,661	7	0	3,255
4	2,501	3,732	28	487	2,093	1,920	4	10,765
5	6,994	2,846	25	372	2,640	170	0	13,047
6	3,807	4,228	60	607	5,671	10,599	707	25,679
7	2,446	3,178	6	288	5,196	329	12	11,455
8	2,045	1,995	11	130	1,769	1,684	0	7,634
9	5,892	5,440	38	488	2,552	821	0	15,231
10	7,801	1,473	27	362	5,202	588	11	15,464
11	2,268	7,962	53	516	4,374	6,269	3	21,445
12	5,332	1,470	8	174	2,826	1,242	15	11,067
13	3,164	1,563	0	2	6,590	959	342	12,620
14	1,521	547	4	150	3,438	312	1	5,973
15	4,526	3,620	42	227	1,874	1,389	23	11,701
16	5	0	0	1	407	21	0	434
17	784	498	0	418	3,704	1,554	4	6,962
18	4,843	1,634	30	732	4,187	2,894	5	14,325
19	3,812	1,174	15	176	1,437	238	0	6,852
20	8,026	2,831	10	223	4,574	600	0	16,264
Total	79,727	45,725	388	6,262	68,149	32,767	1,129	234,147